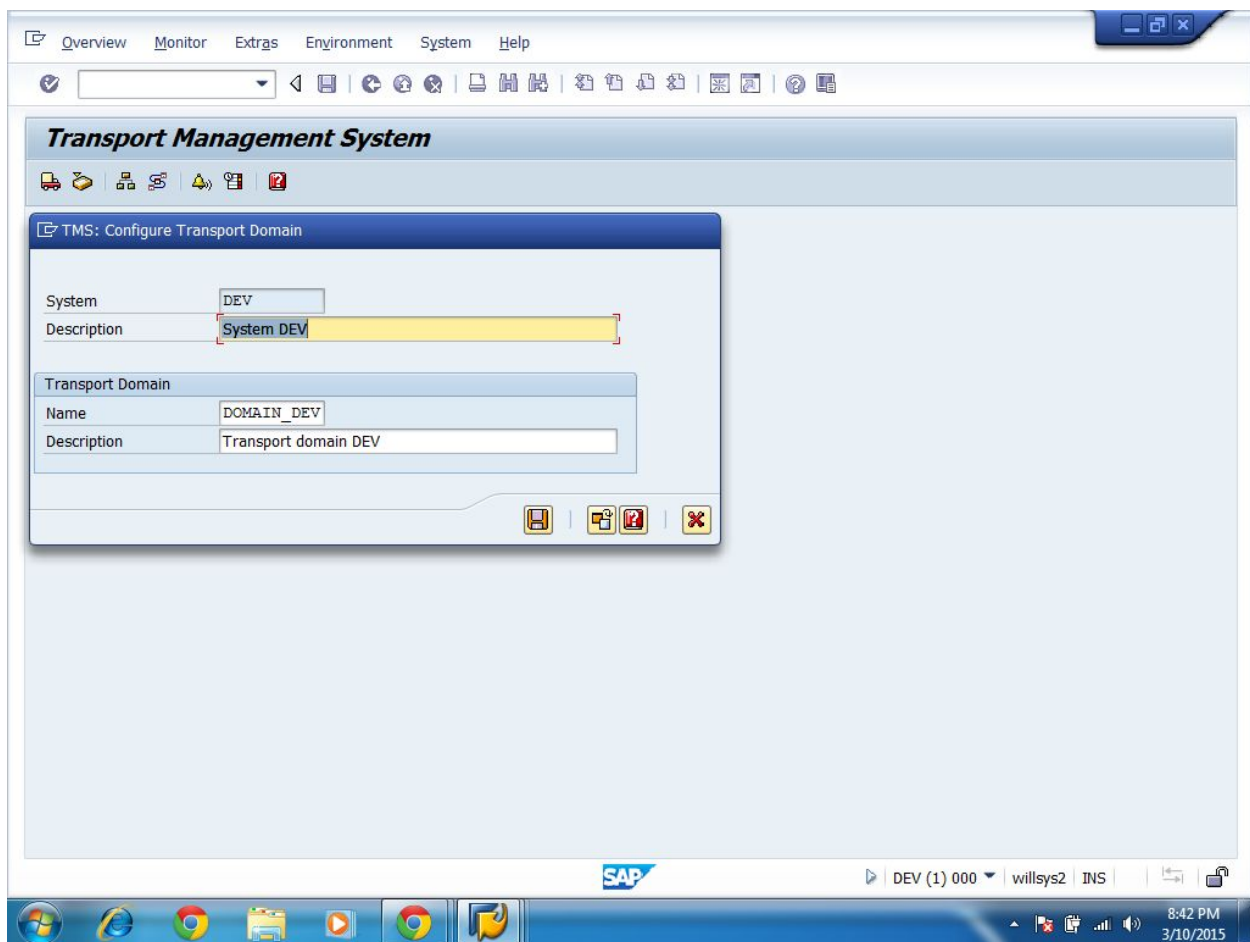


STEP 2:

DEV SYSTEM:

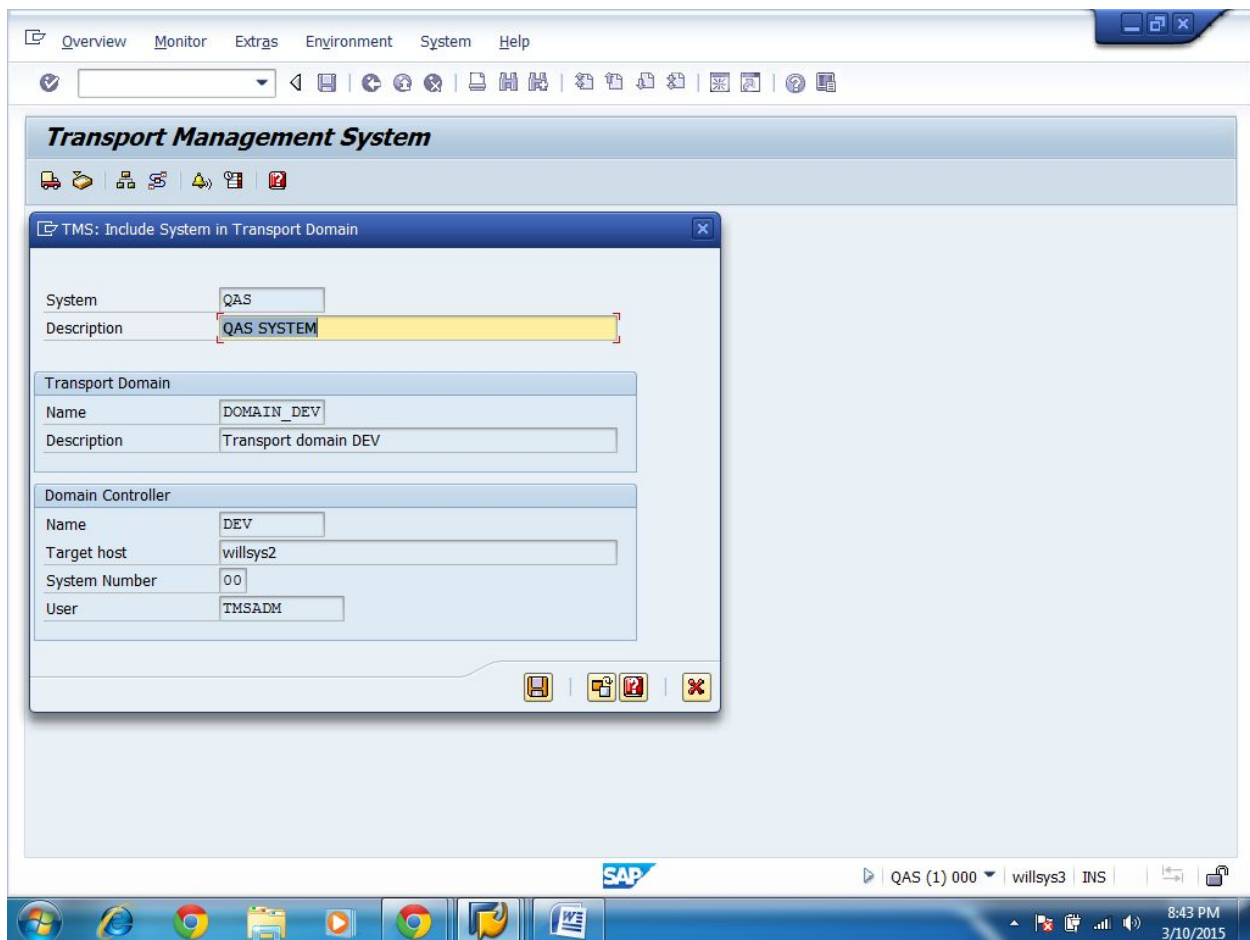
- Log-on to the SAP system using 000 client, like DDIC user
- Execute STMS T-code
- Click the 'Save Button' in the dialog box that appears
- 1st system will become domain controller and transport domain will be created



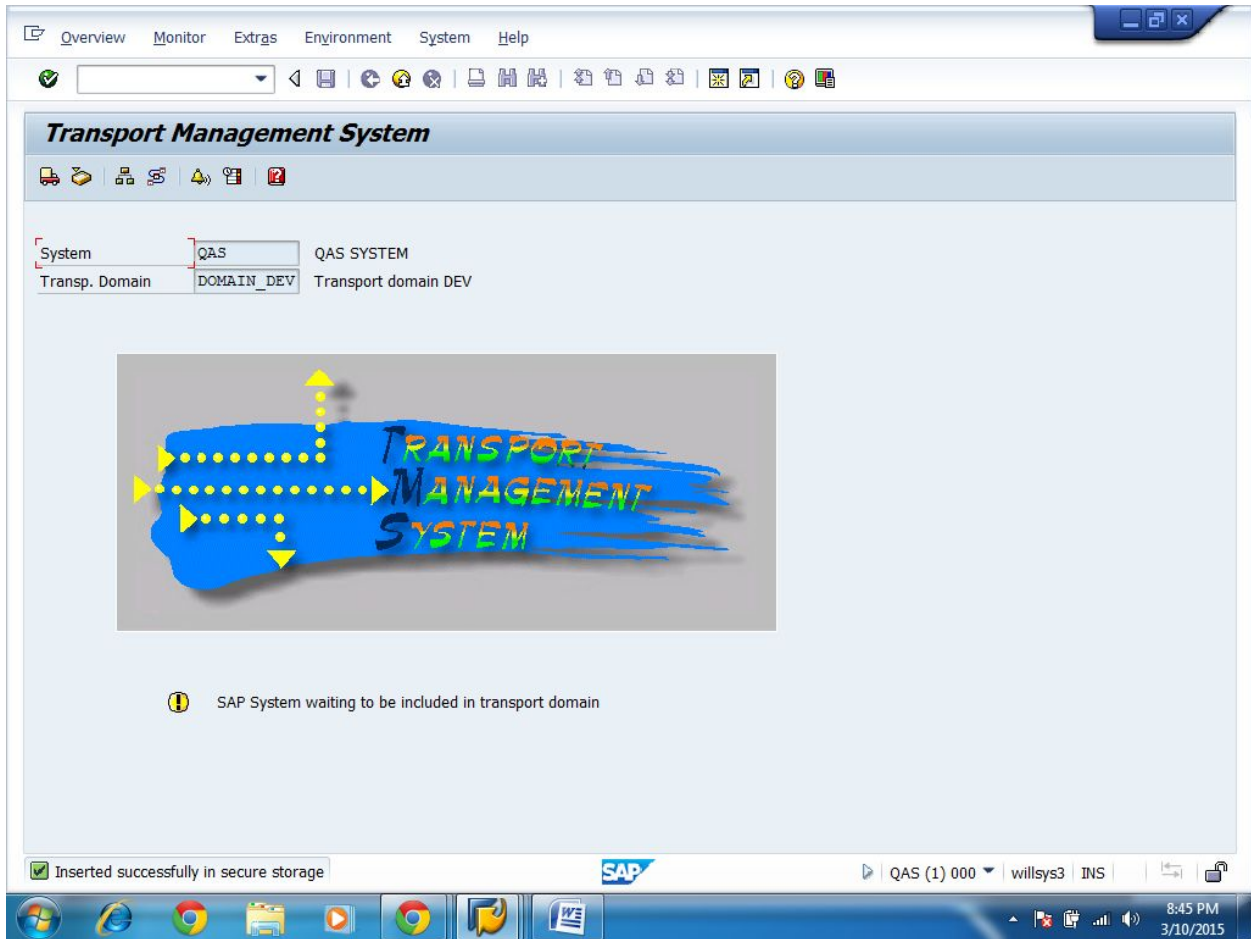
STEP 3:

QAS SYSTEM:

- Log-on to the SAP system using 000 client, like DDIC user
- Execute STMS T-Code
- Transport Domain and Domain Controller Information will be displayed in the dialog box that opens
- Click the 'Save Button' in the above dialog box



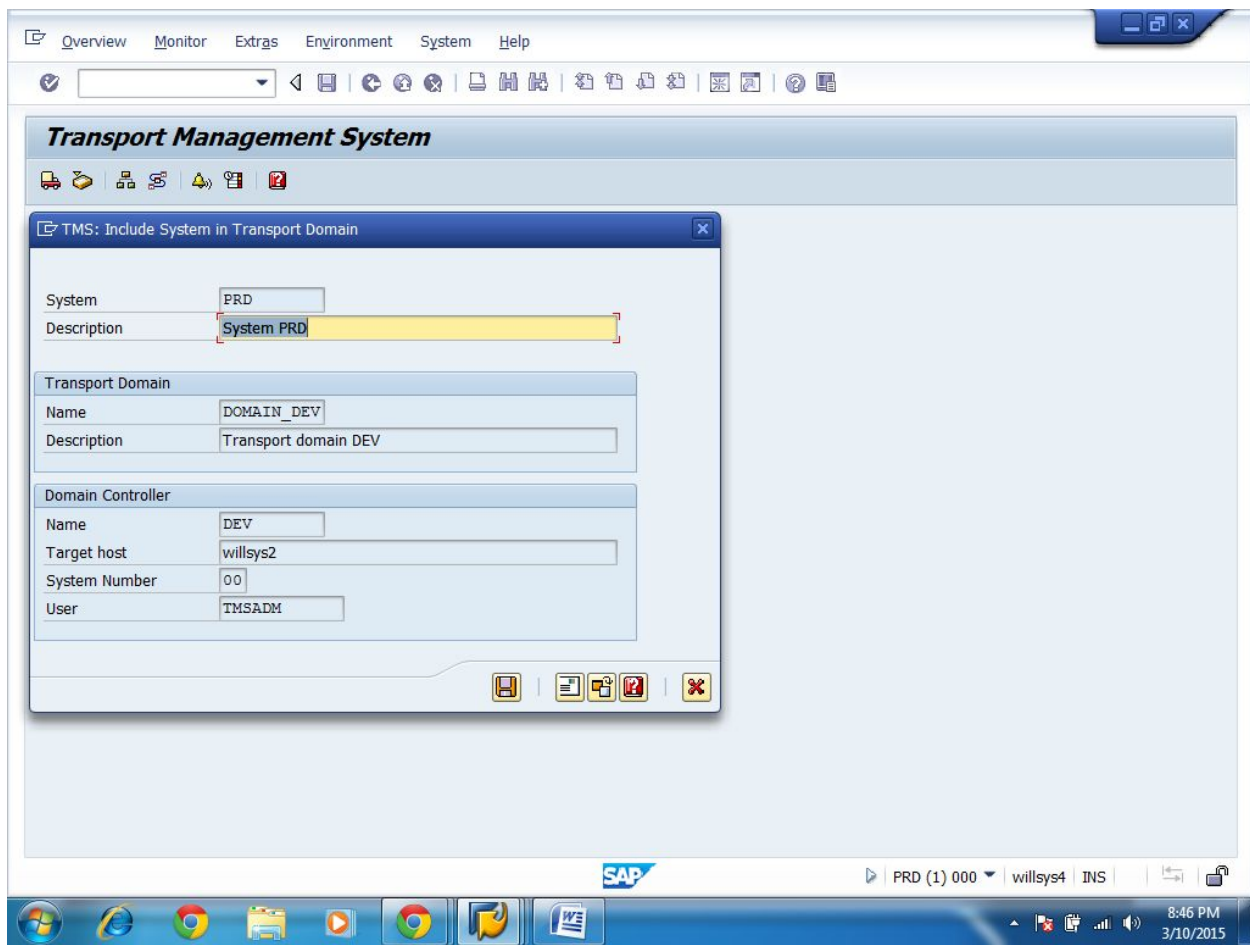
The message ‘SAP System is waiting to be included in transport domain’ will be displayed under the TMS graphic. We have to approve this system in Domain Controller



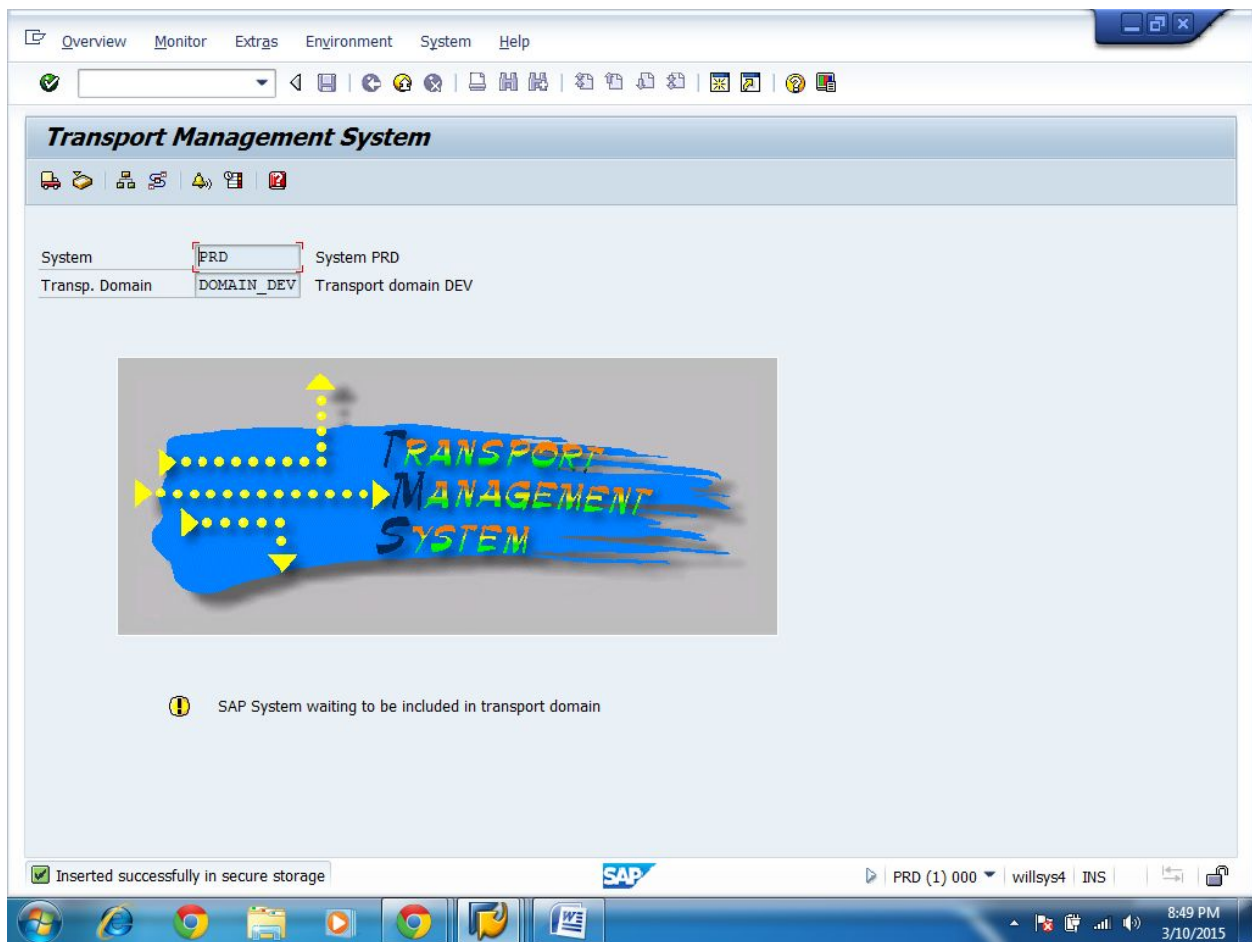
STEP 4:

PRD SYSTEM:

- Log-on to the SAP system using 000 client, like DDIC user
- Execute STMS T-Code
- Transport Domain and Domain Controller Information will be displayed in the dialog box that opens
- Click the 'Save Button' in the above dialog box



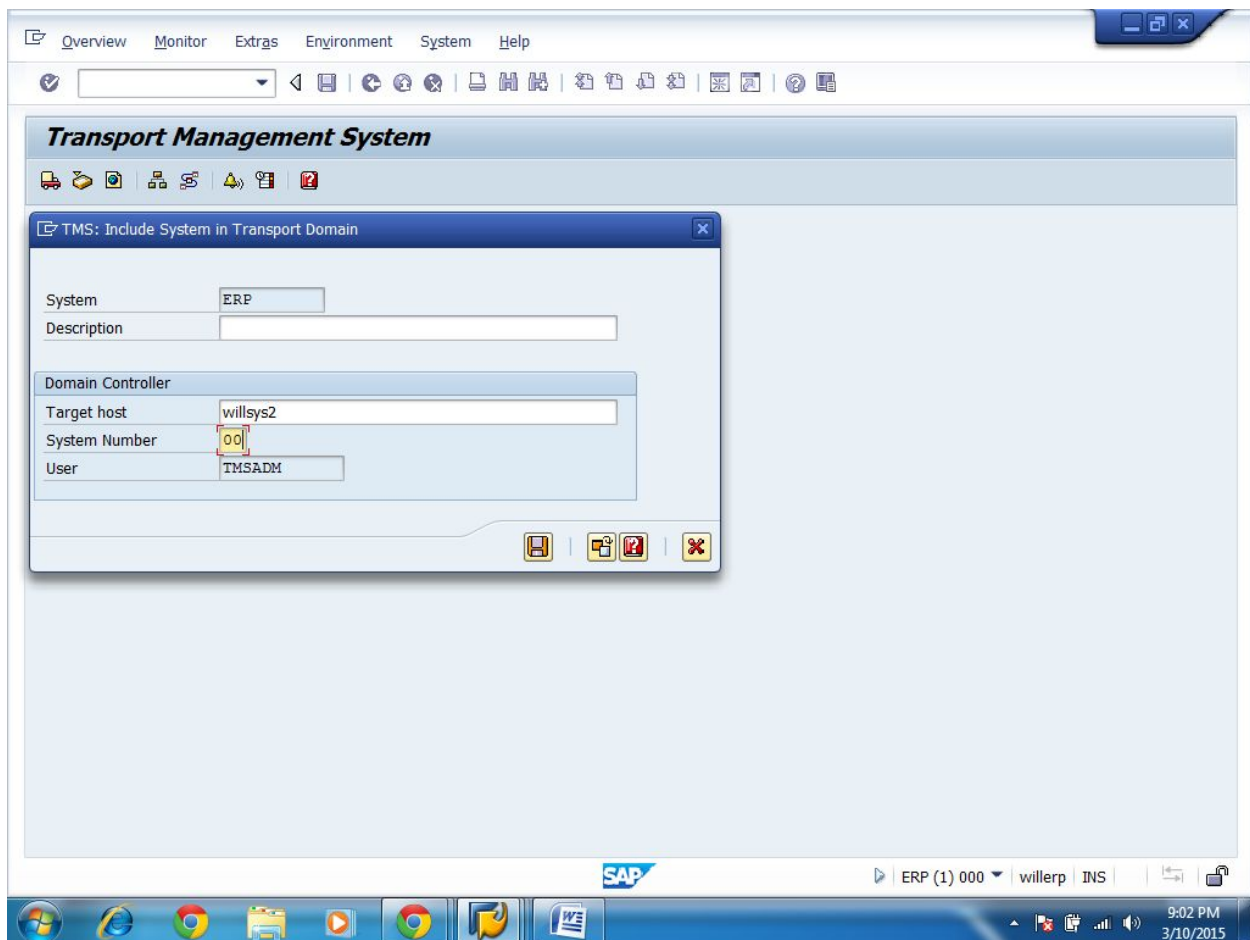
The message ‘SAP System is waiting to be included in transport domain’ will be displayed under the TMS graphic. We have to approve this system in Domain Controller



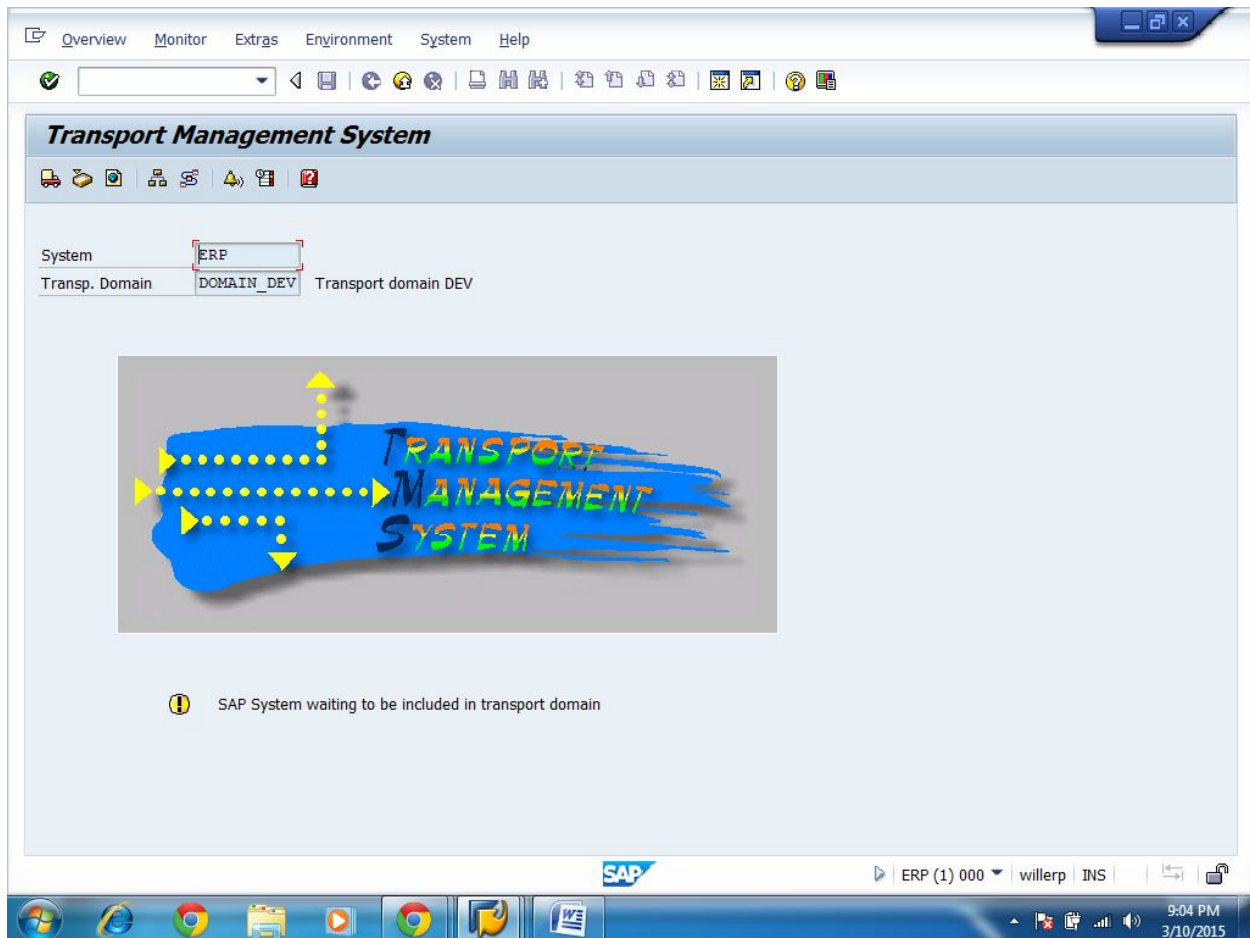
STEP 5:

TEST SYSTEM:

- Log-on to the SAP system using 000 client, like DDIC user
- Execute STMS T-Code
- Transport Domain and Domain Controller Information will be displayed in the dialog box that opens
- Click the 'Save Button' in the above dialog box

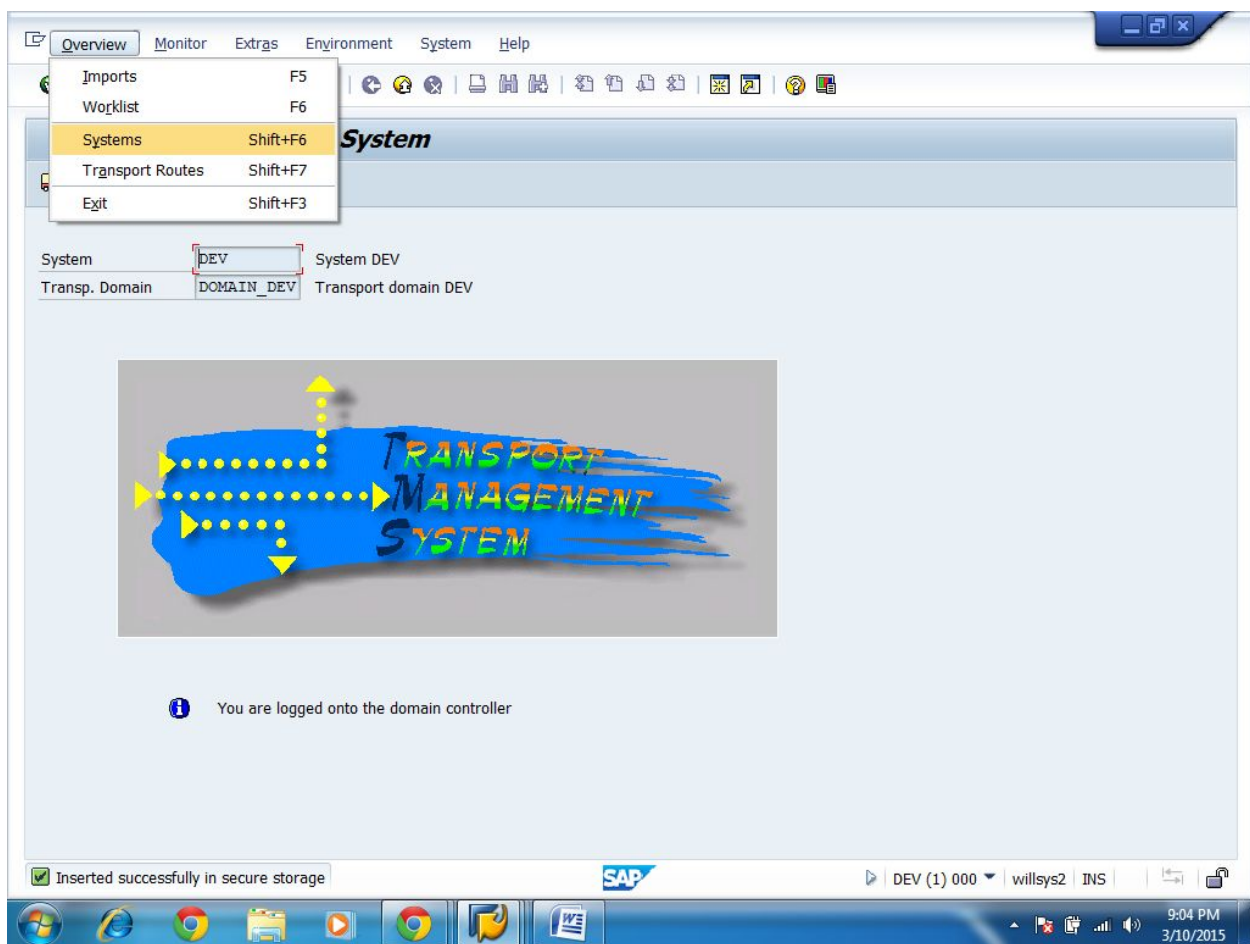


The message ‘SAP System is waiting to be included in transport domain’ will be displayed under the TMS graphic. We have to approve this system in Domain Controller

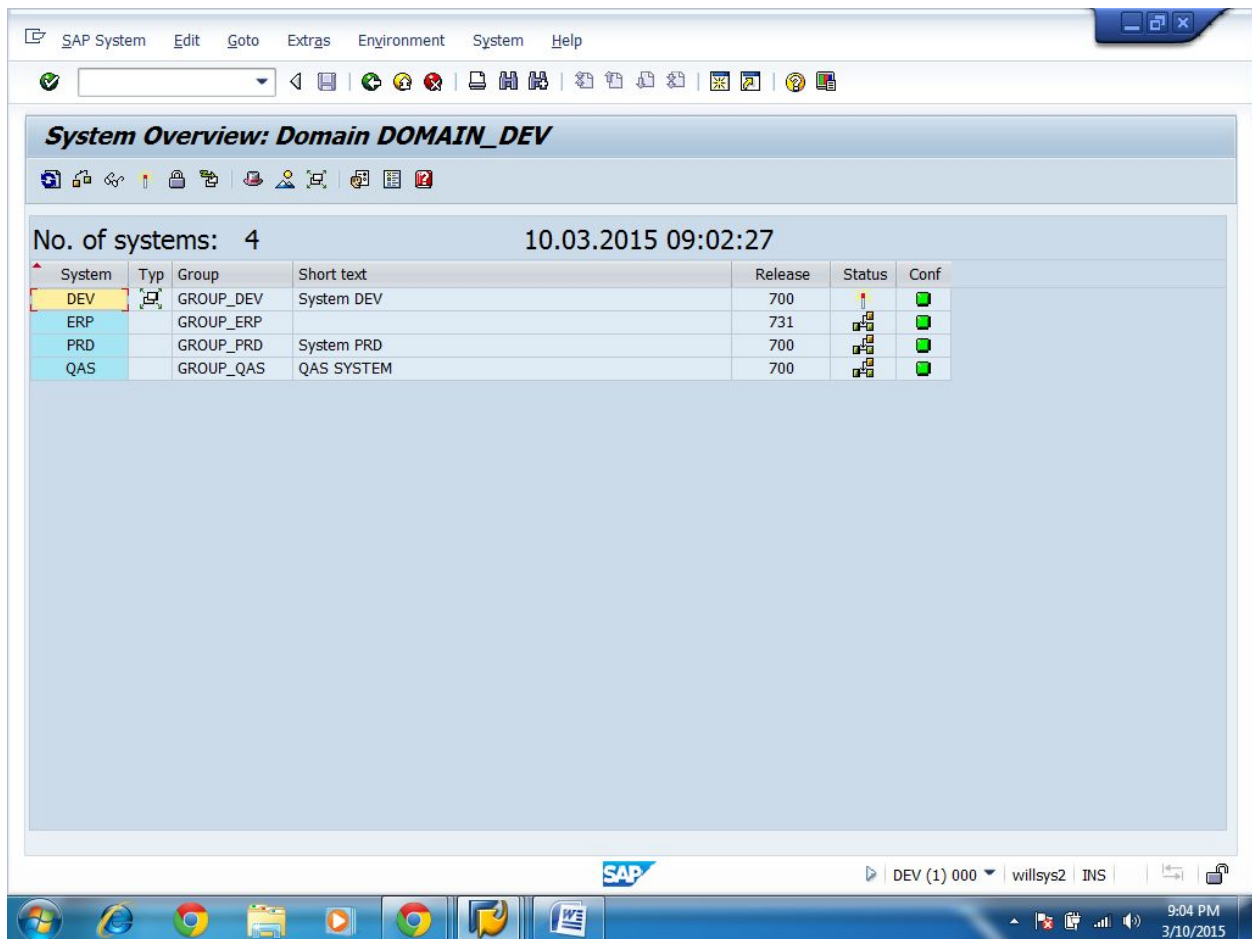


STEP 6:

- NOW GO TO DOMAIN CONTROLLER SYSTEM (DEV SYSTEM)
- Go to Menu **OVERVIEW** **SYSTEMS**

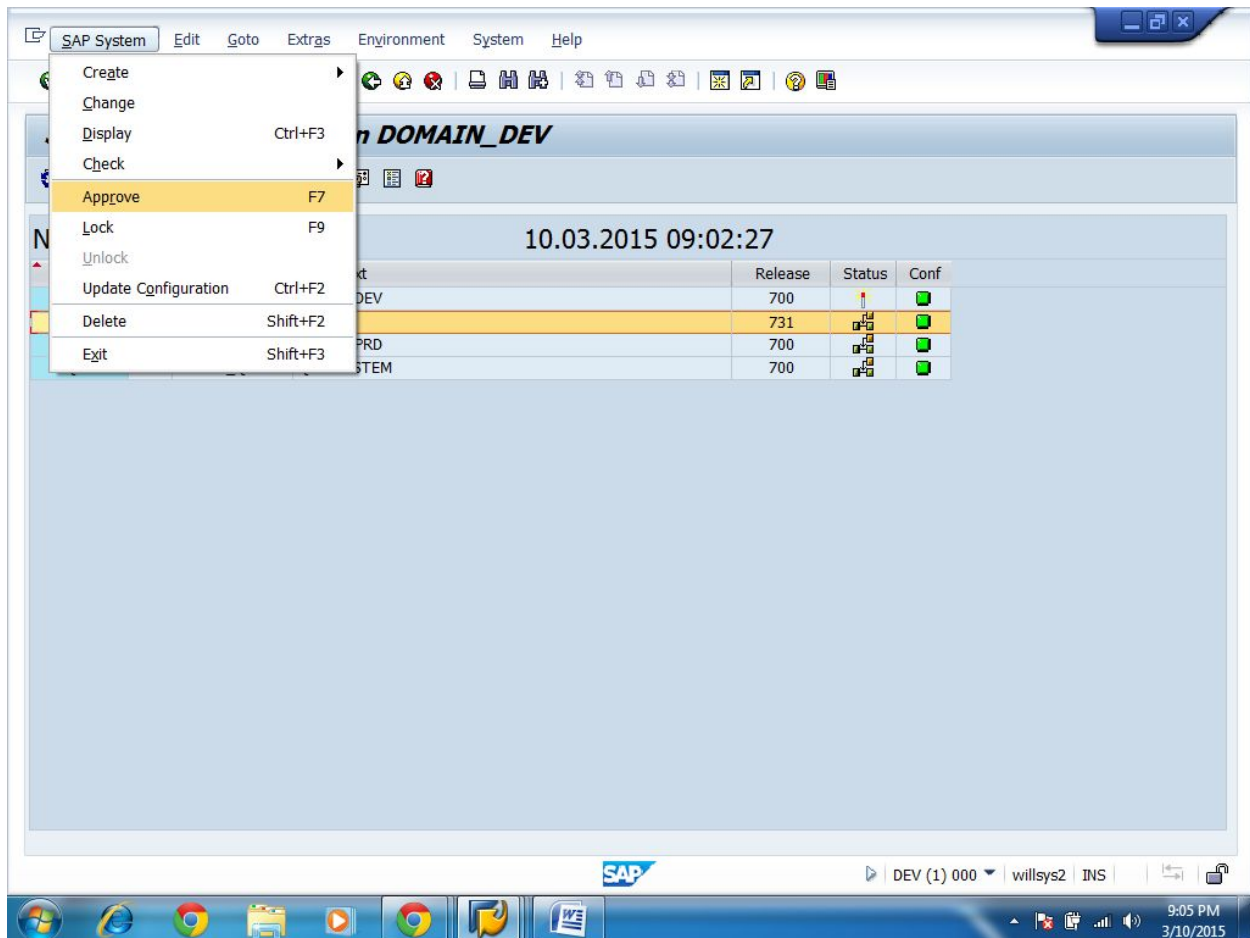


- All the systems will be displayed

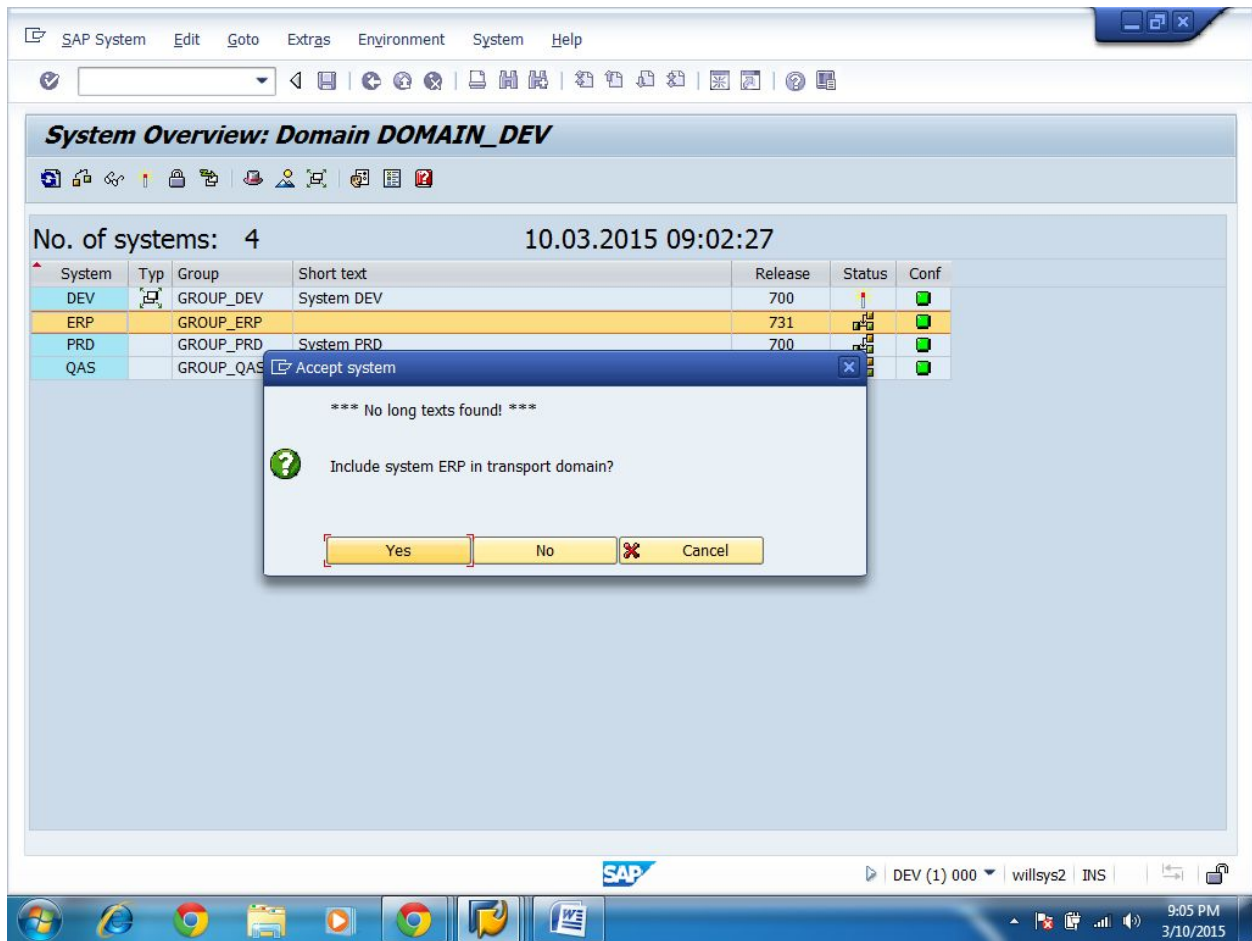


STEP 7:

- Select 'SAP System' and click Approve
- Go to menu **SAP SYSTEM APPROVE**



➤ Click YES



The screenshot shows the SAP System Overview interface for Domain DOMAIN_DEV. The table below lists the systems in the domain:

System	Typ	Group	Short text	Release	Status	Conf
DEV		GROUP_DEV	System DEV	700		Green
ERP		GROUP_ERP		731		Green
PRD		GROUP_PRD	System PRD	700		Green
QAS		GROUP_QAS				Green

A dialog box titled "Accept system" is displayed over the table, with the following text:

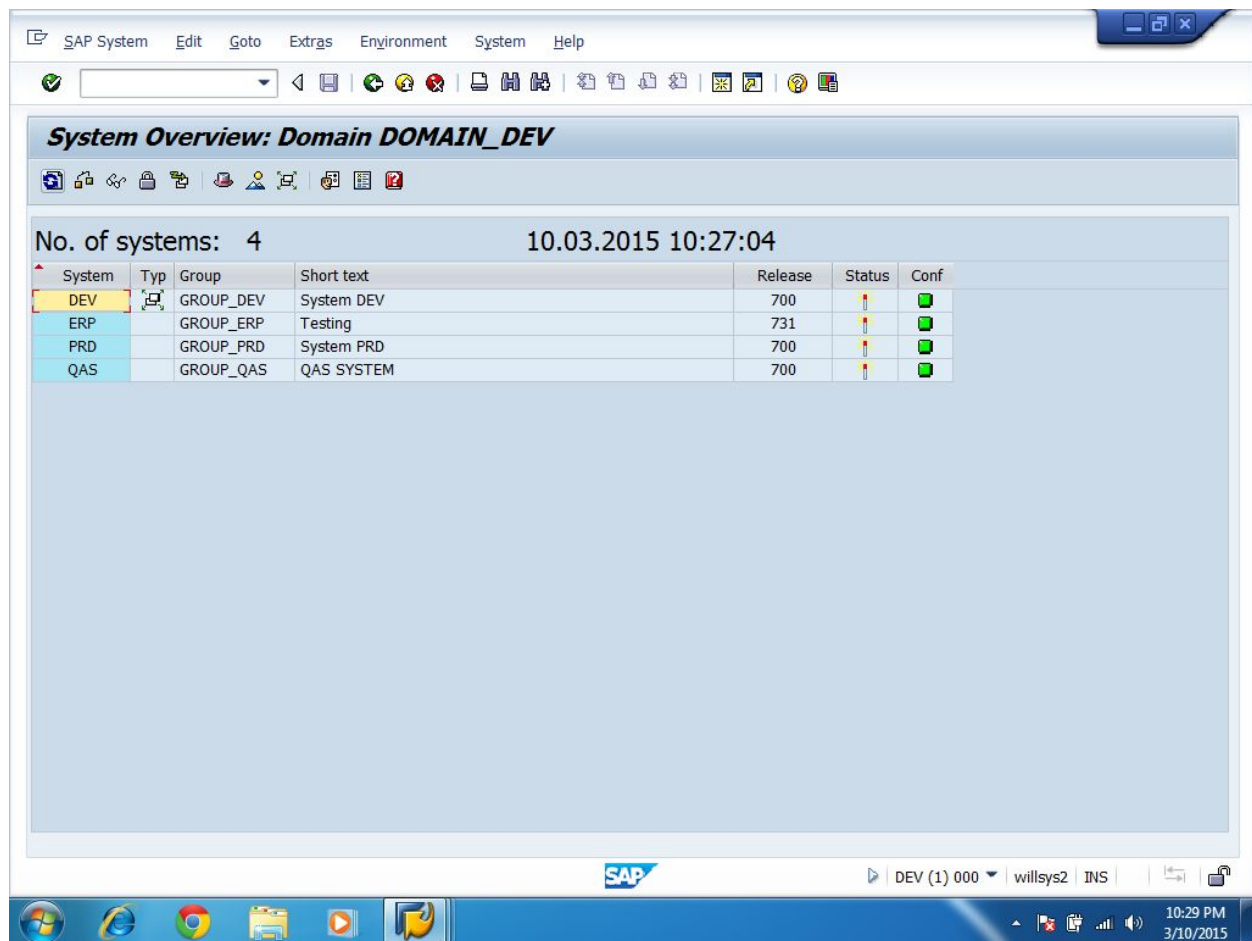
*** No long texts found! ***

Include system ERP in transport domain?

Buttons: Yes, No, Cancel

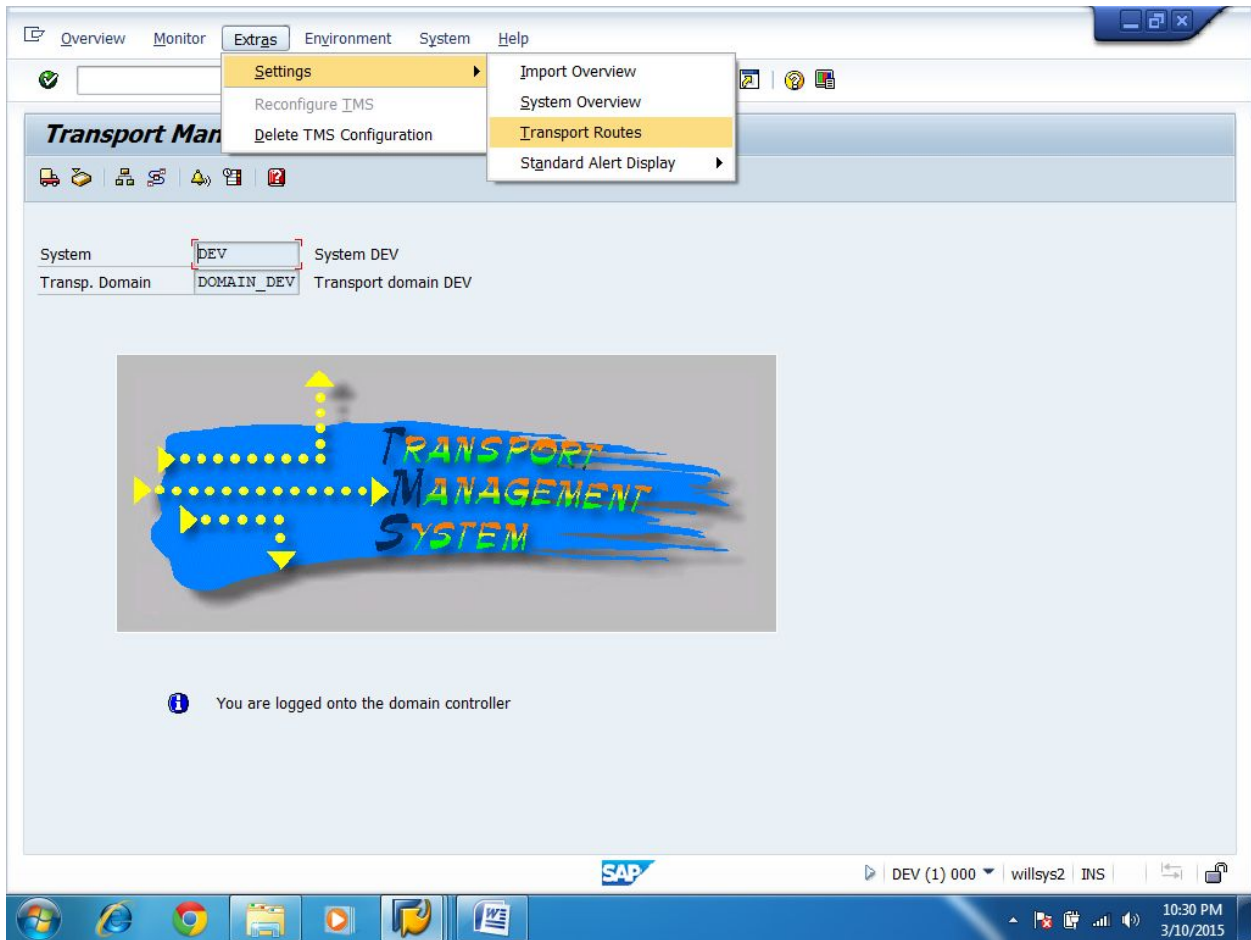


➤ All system Approved



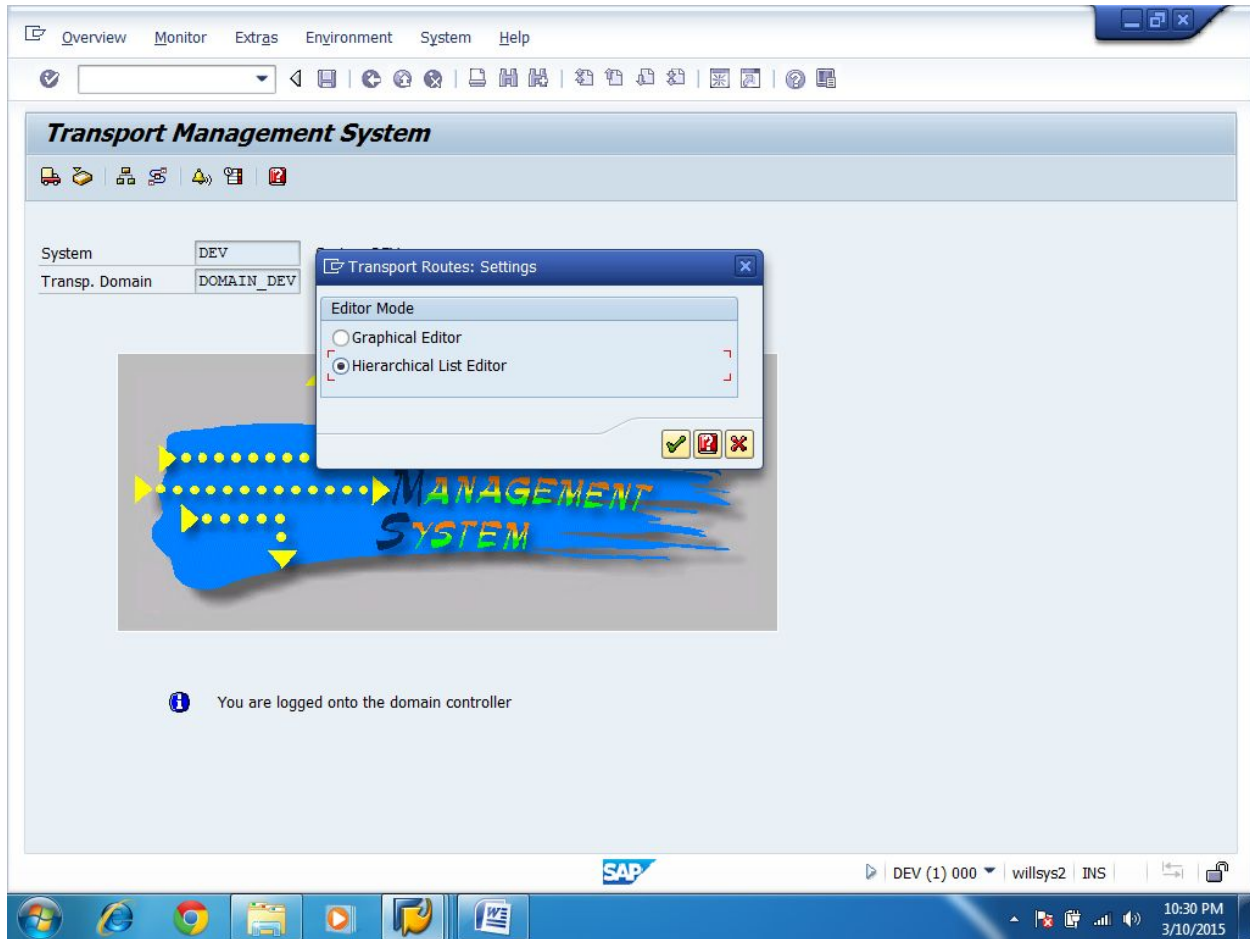
STEP 8:

- Go STMS Home Page
- Go to EXTRA SETTINGS TRANSPORT ROUTES



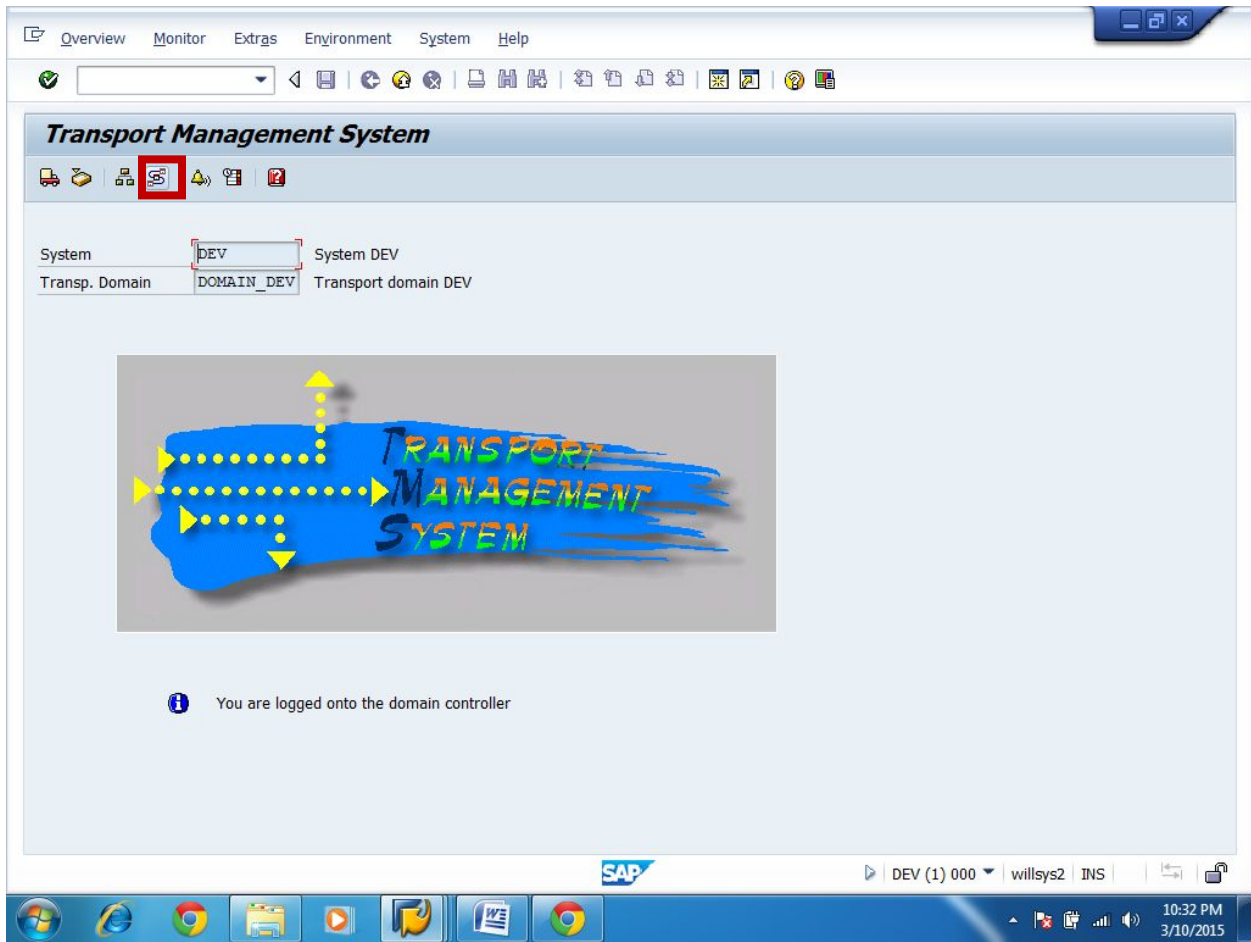
STEP 9:

One pop-up window will be open. Here select **HIERARCHICAL LIST EDITOR** Option



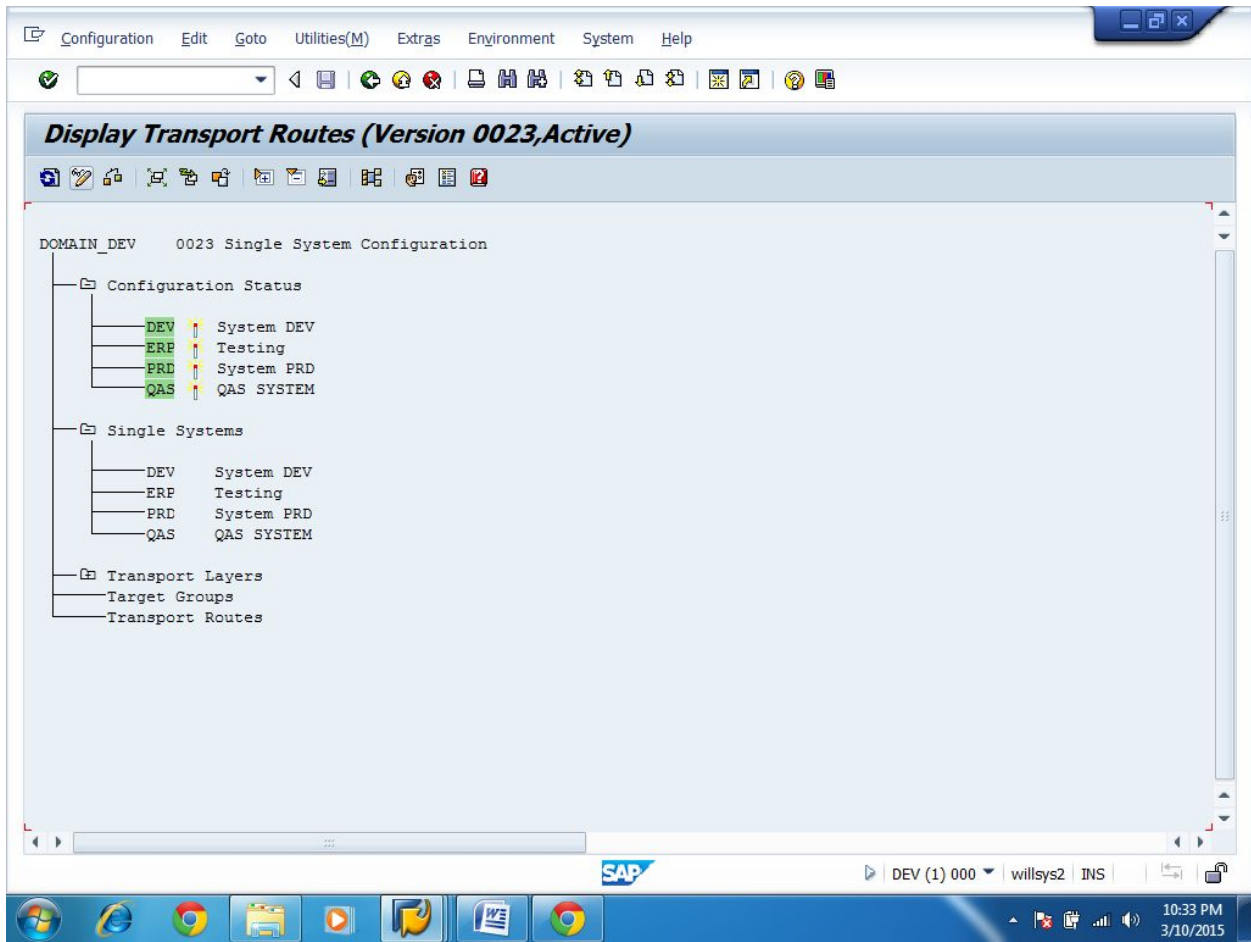
STEP 10:

- Click TRANSPORT ROUTES



STEP 11:

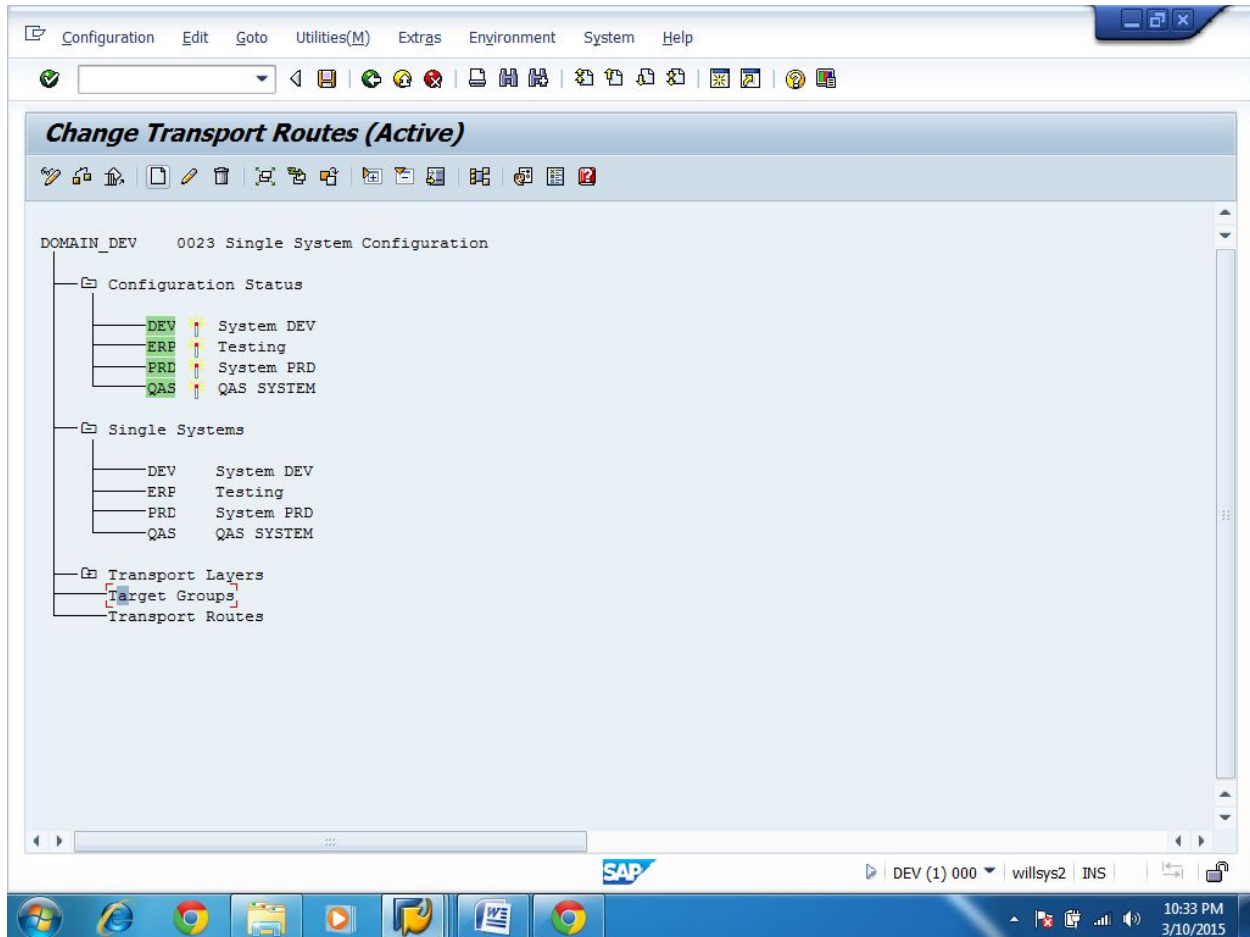
Create Target Groups



STEP 12:

Click Edit Icon

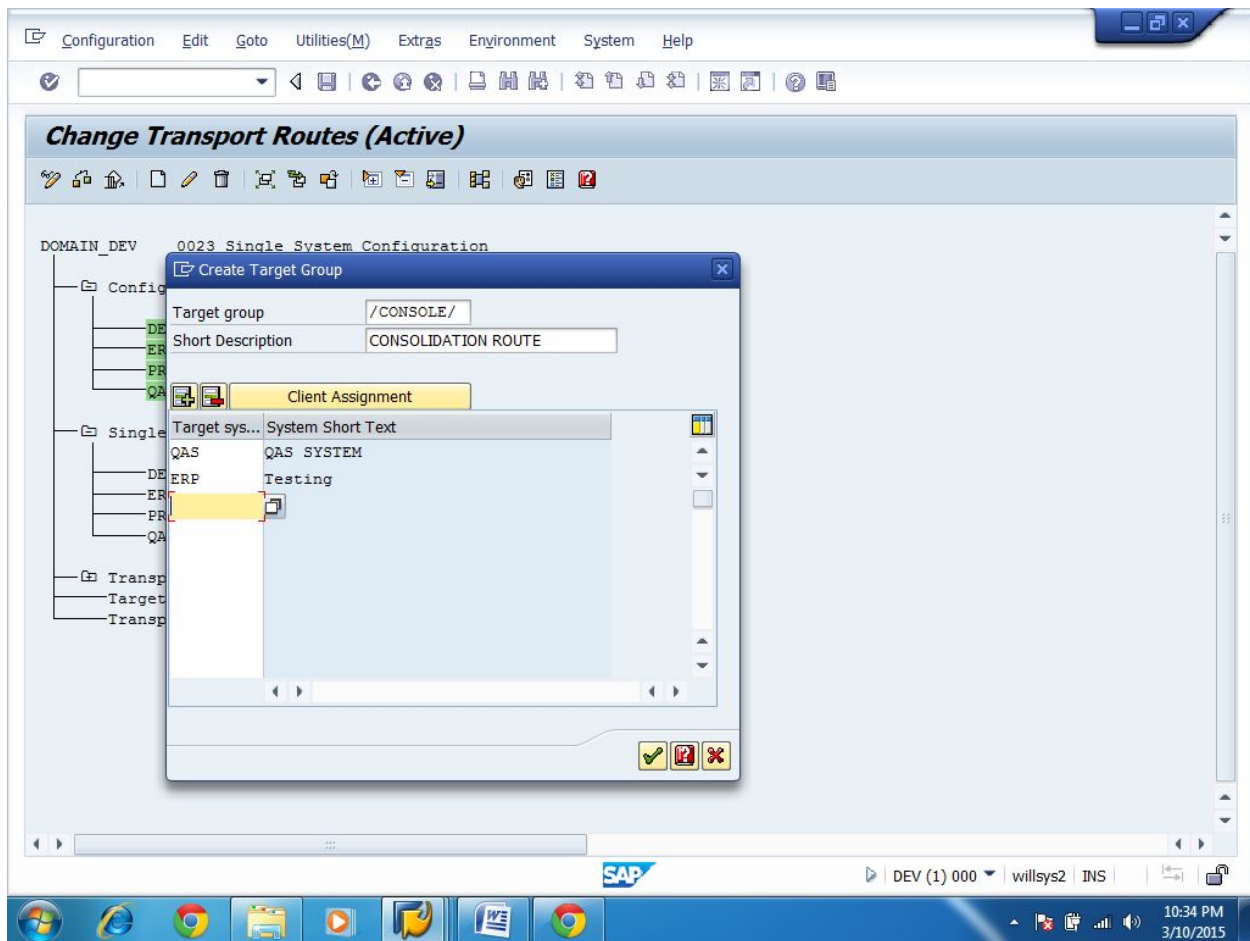
Select **Target Groups**. Then Click **Create Icon**



STEP 13:

- One pop-up window will be open
- Specify Target Group. Target Group Name should be in // (Ex: /CONSOLE/)
- Specify Short Description

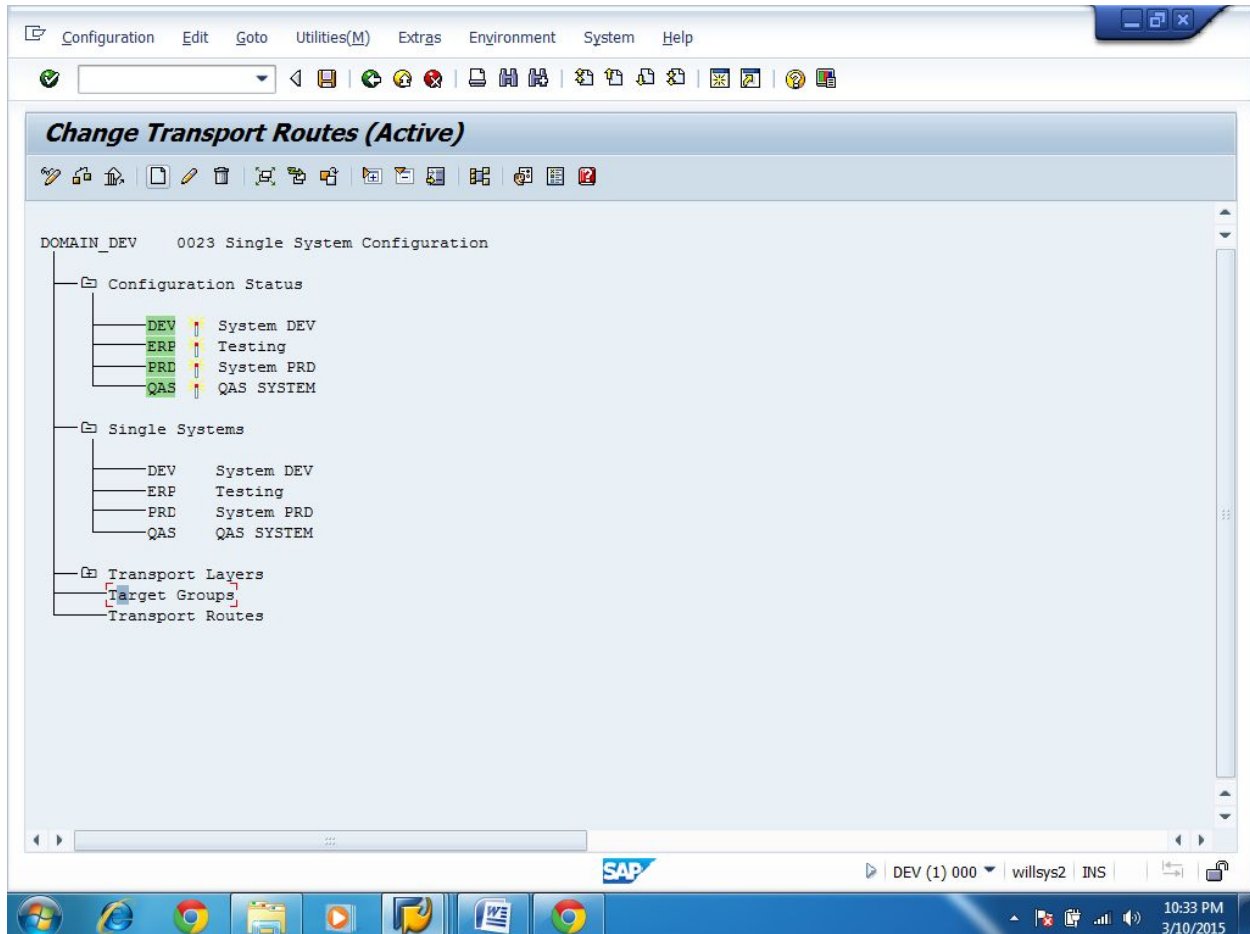
- Include Consolidation Route System
- Click Continue



STEP 14:

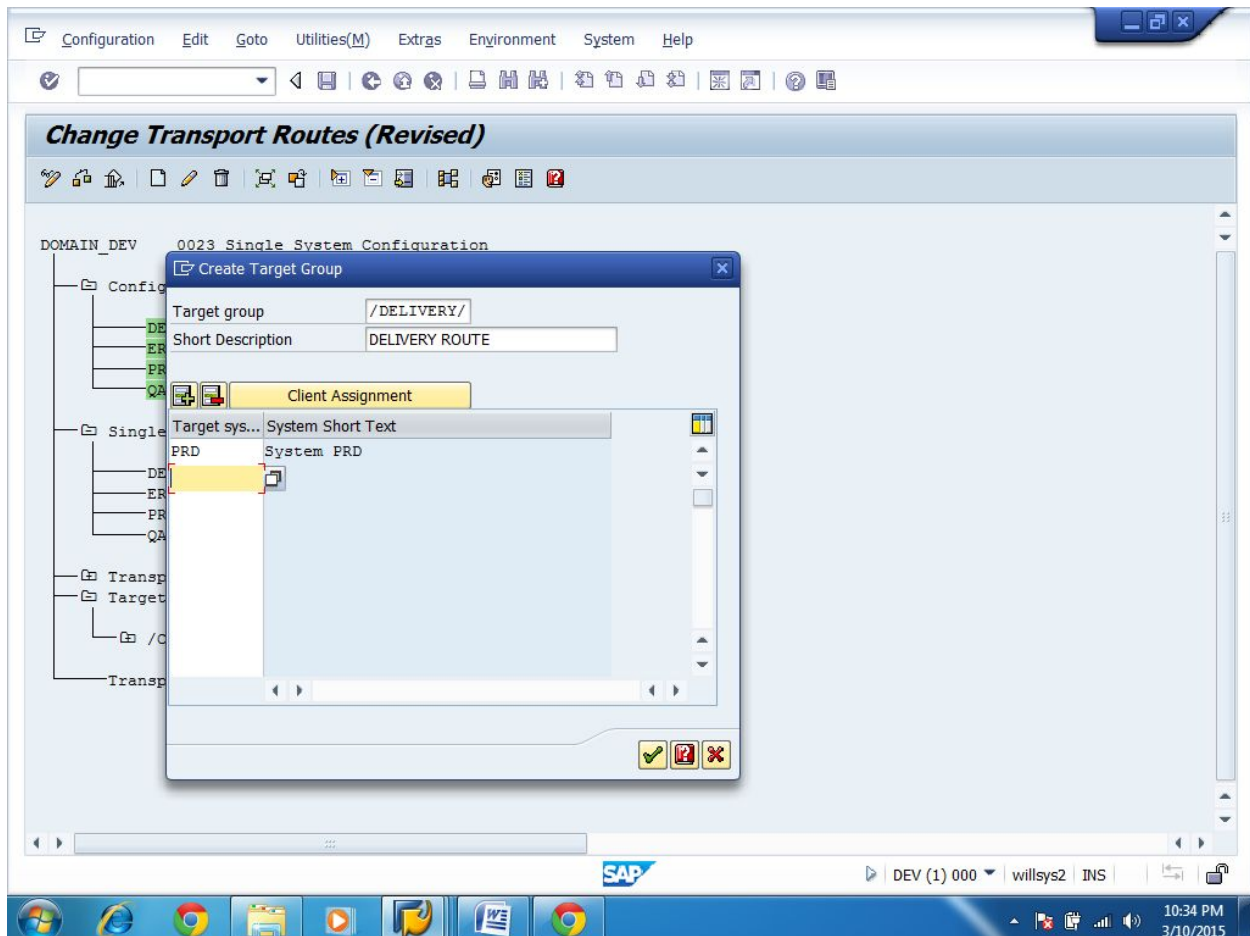
Click Edit Icon

Select **Target Groups**. Then Click **Create Icon**

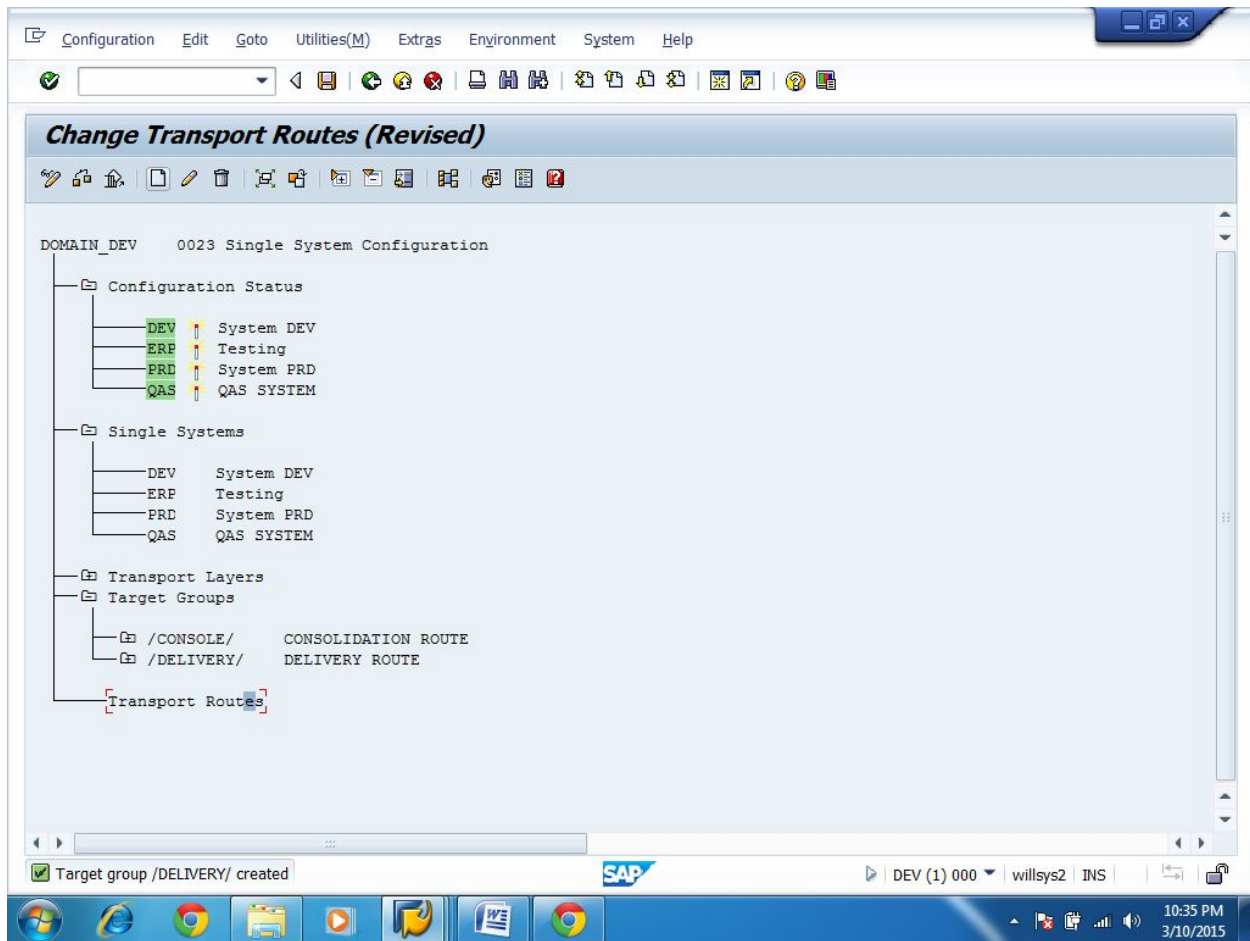


STEP 15:

- One pop-up window will be open
- Specify Target Group. Target Group Name should be in // (Ex: /DELIVERY/)
- Specify Short Description
- Include Consolidation Route System
- Click Continue



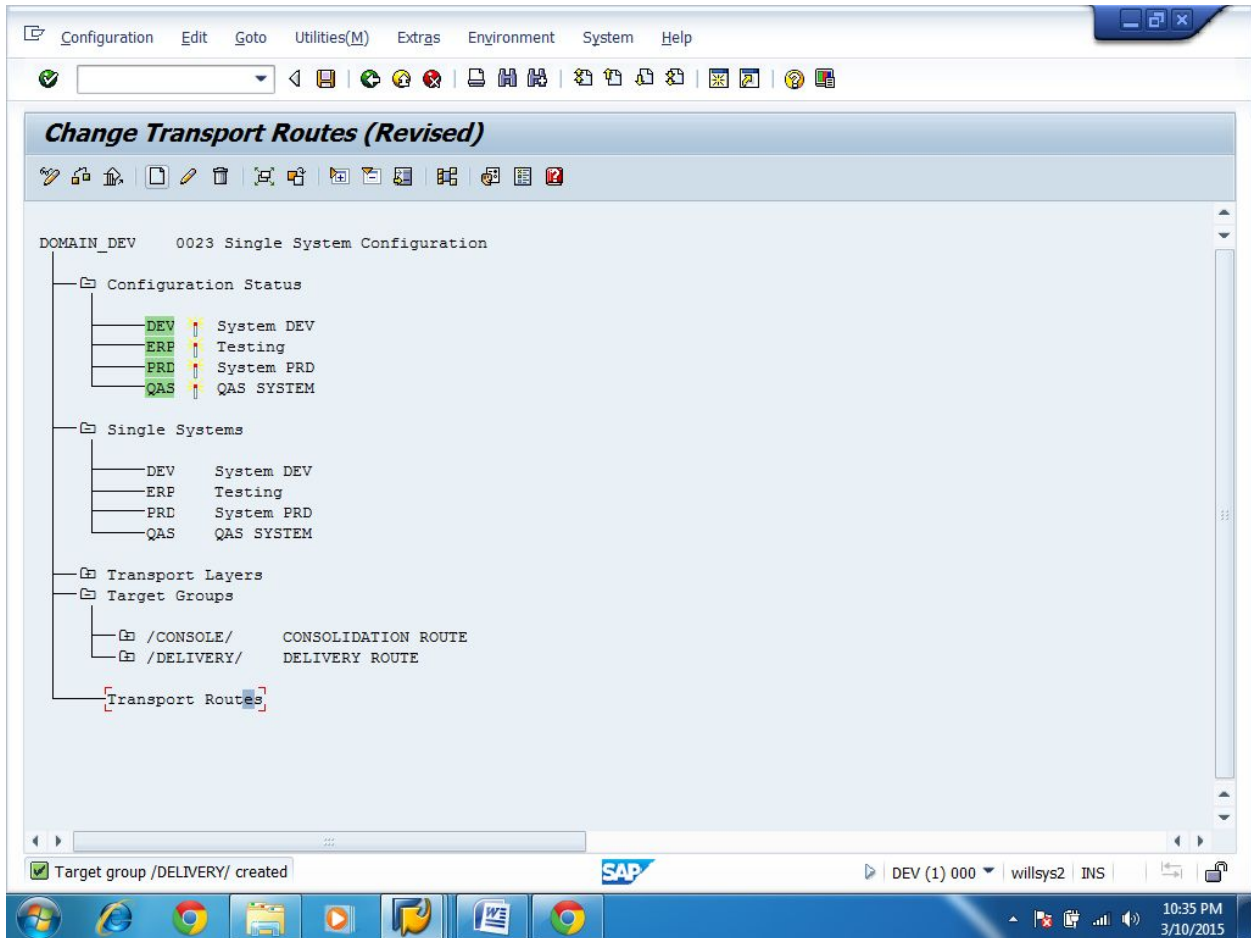
➤ Target Groups created



STEP 16:

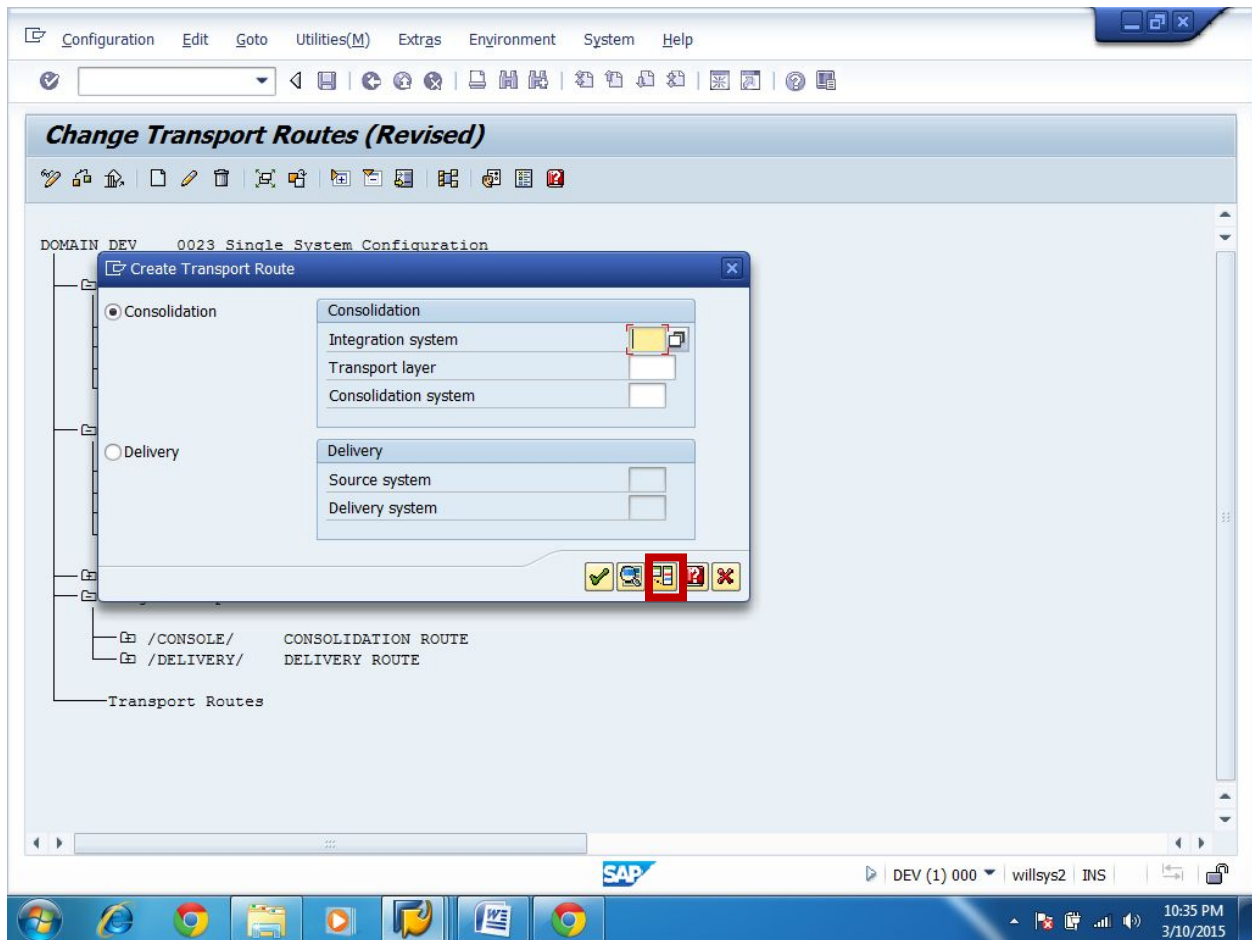
Create Transport Routes (Consolidation Route)

Select **Transport Routes**. Then Click **Create** icon



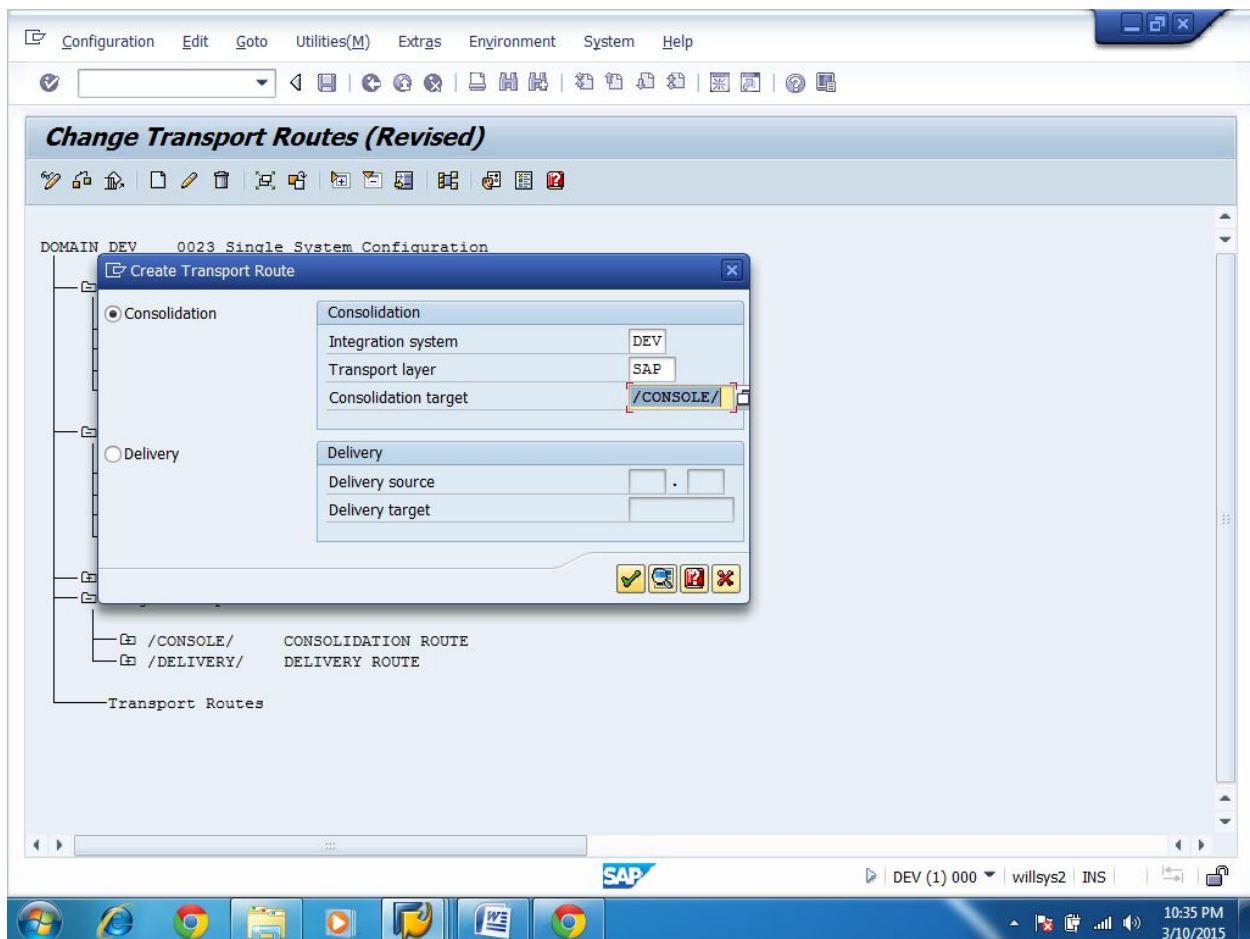
STEP 17:

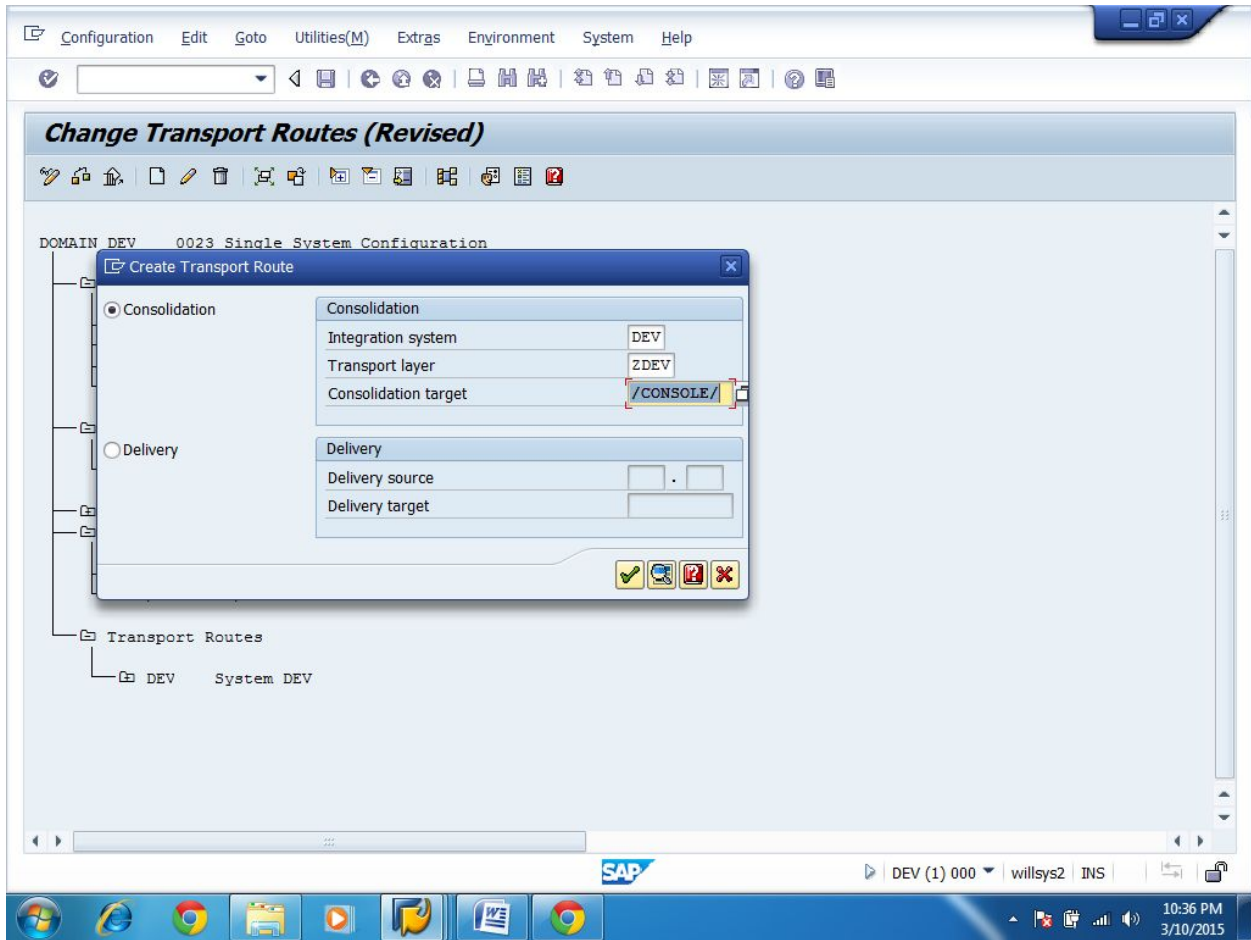
- Click **Extended Transport Control**.



STEP 18:

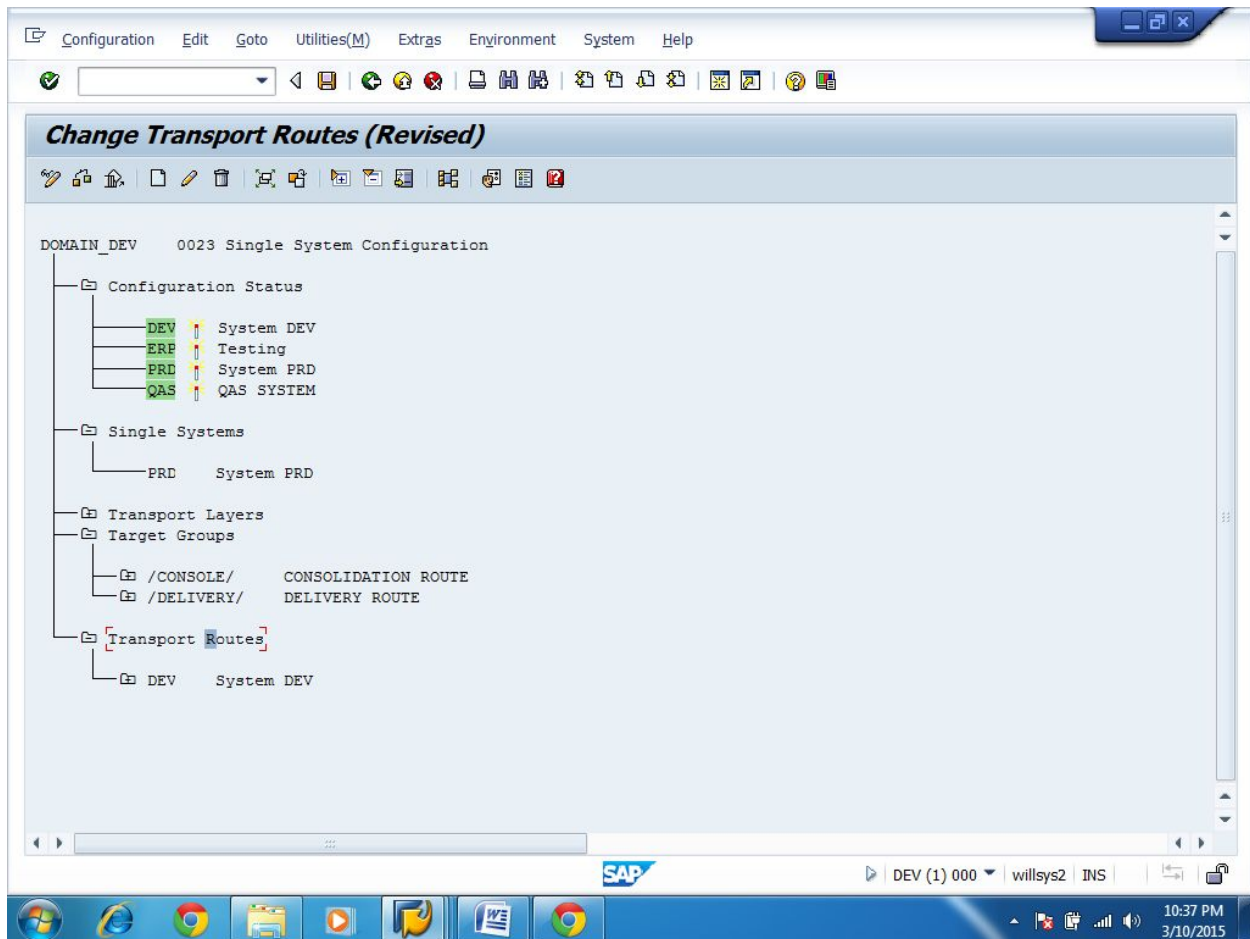
- Select Consolidation option
- Specify Integration System, Transport Layer, Consolidation System (In Consolidation System, we want to specify Consolidation Target Group Name)





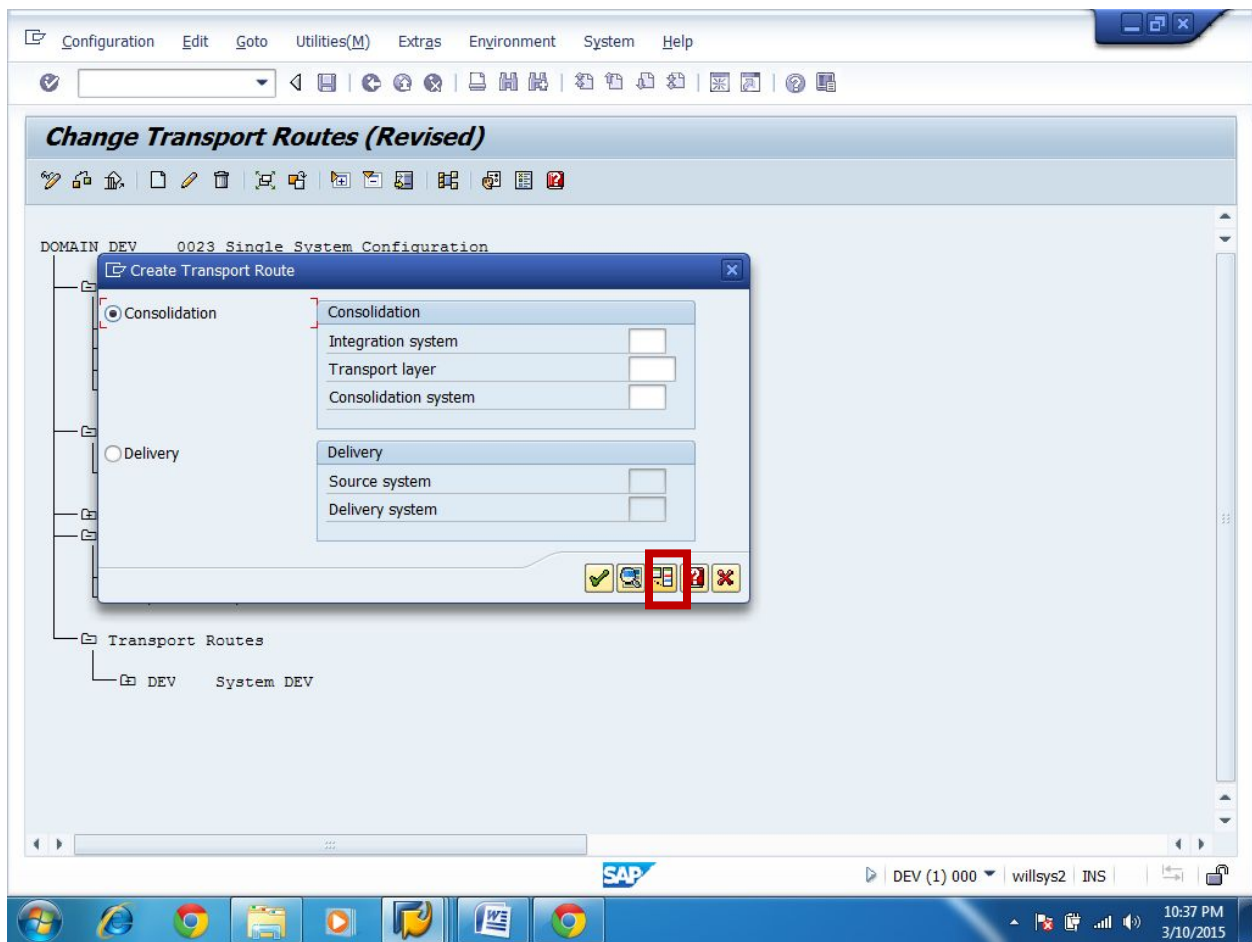
STEP 19:

- Create Transport Routes (Delivery Route)
- Select **Transport Routes**. Then Click **Create icon**



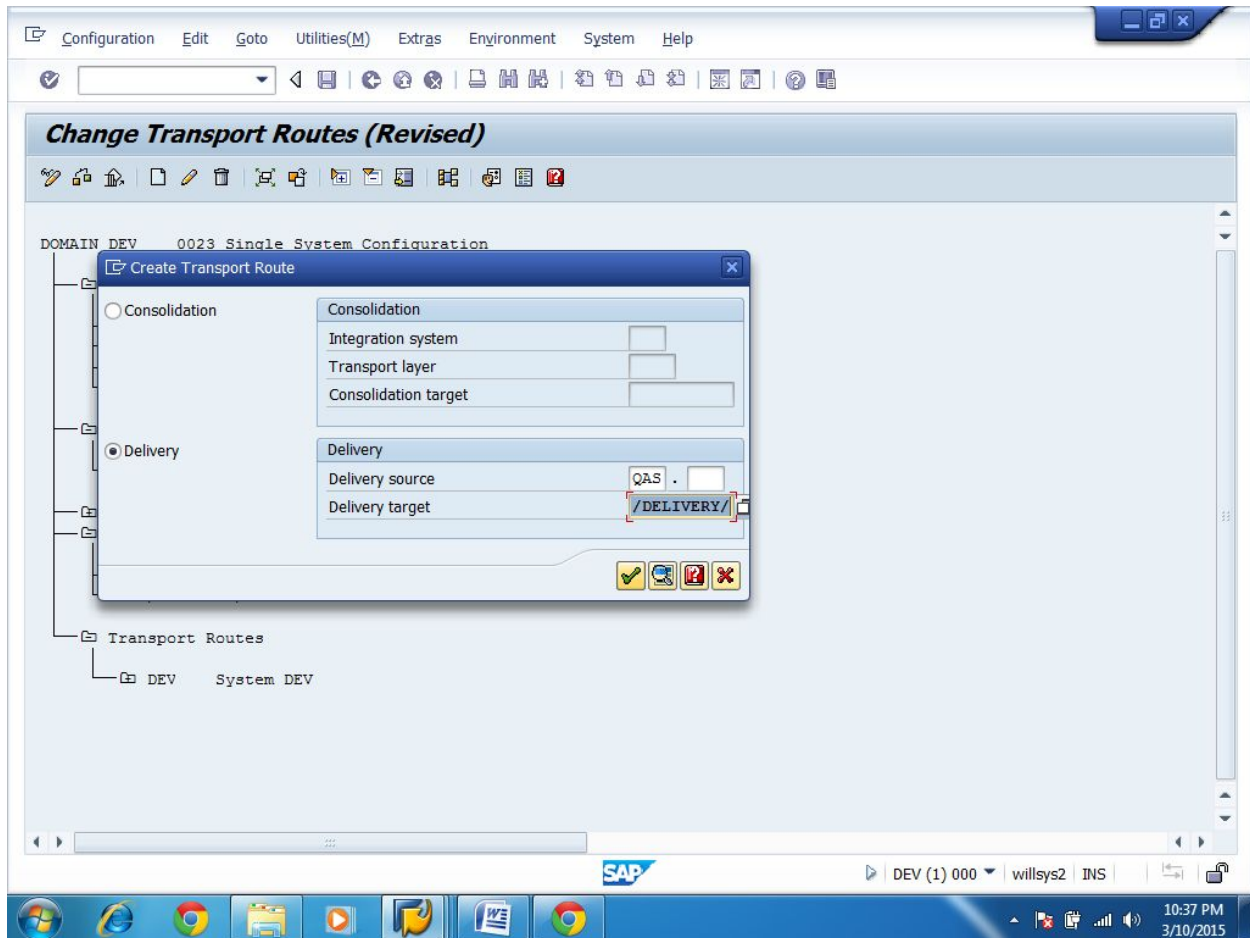
STEP 20:

➤ Click **Extended Transport Control**.



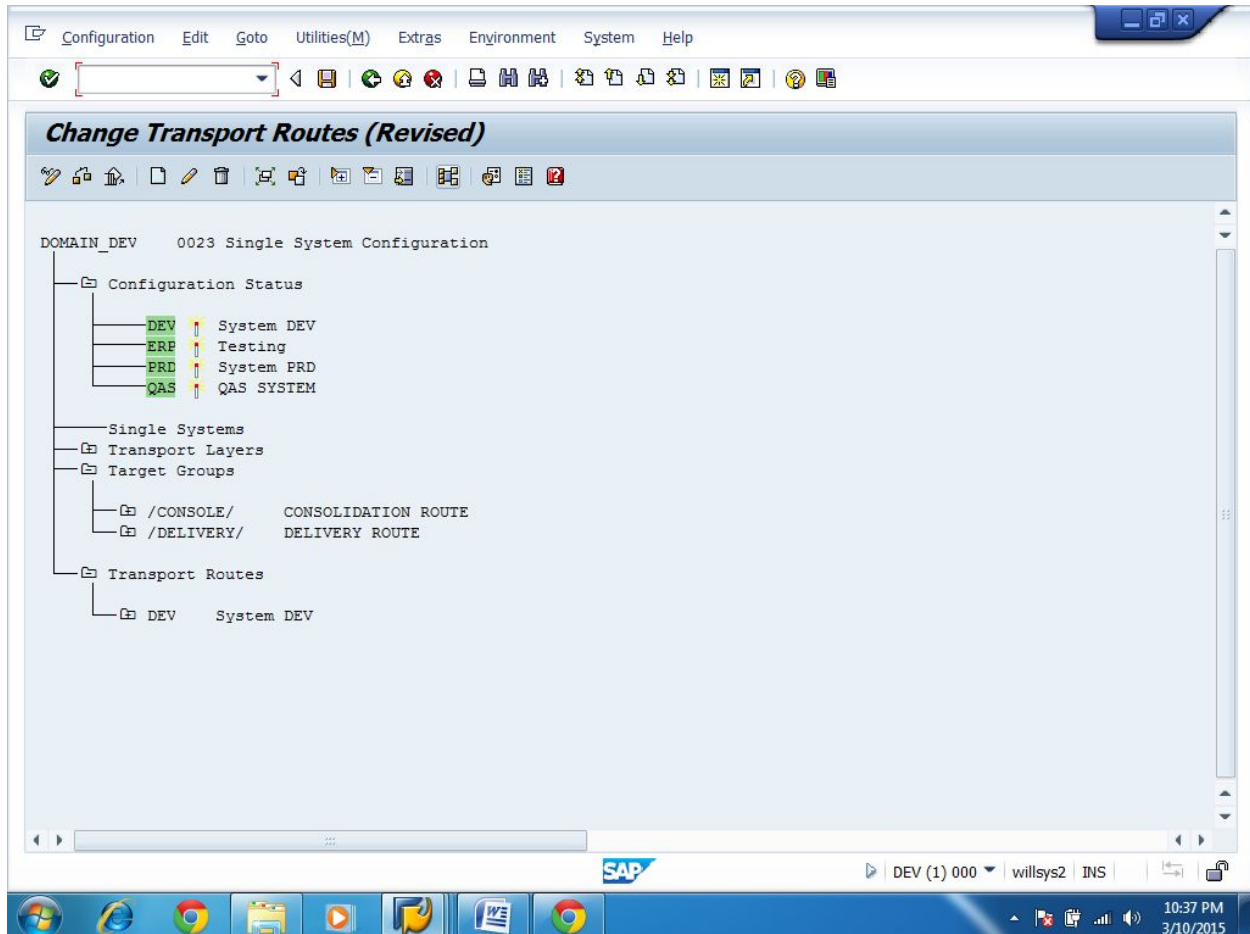
STEP 21:

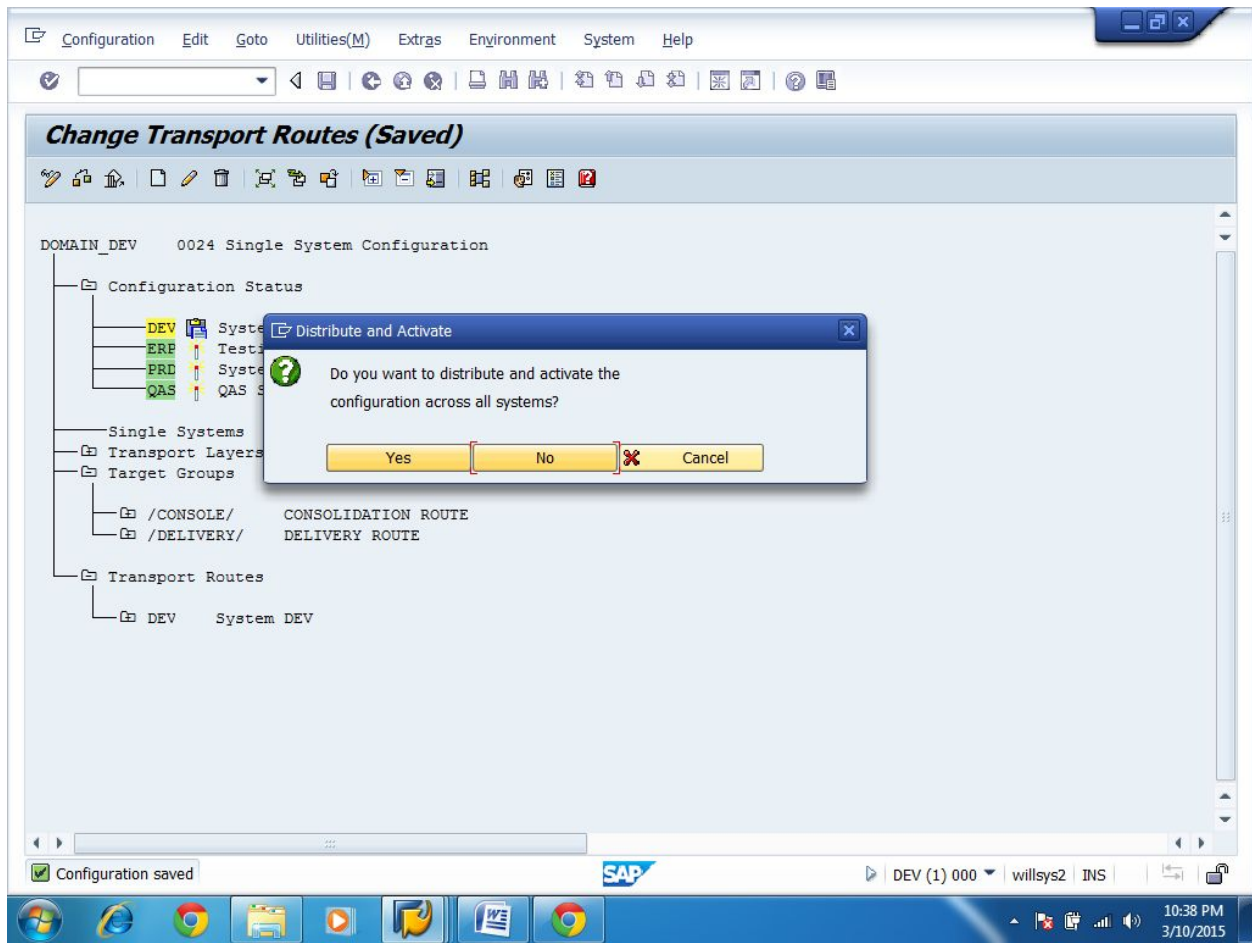
- Select **Delivery** option
- Specify Delivery Source, Delivery Target (In Delivery Target, we want to specify Delivery Target Group Name)
- Click Continue



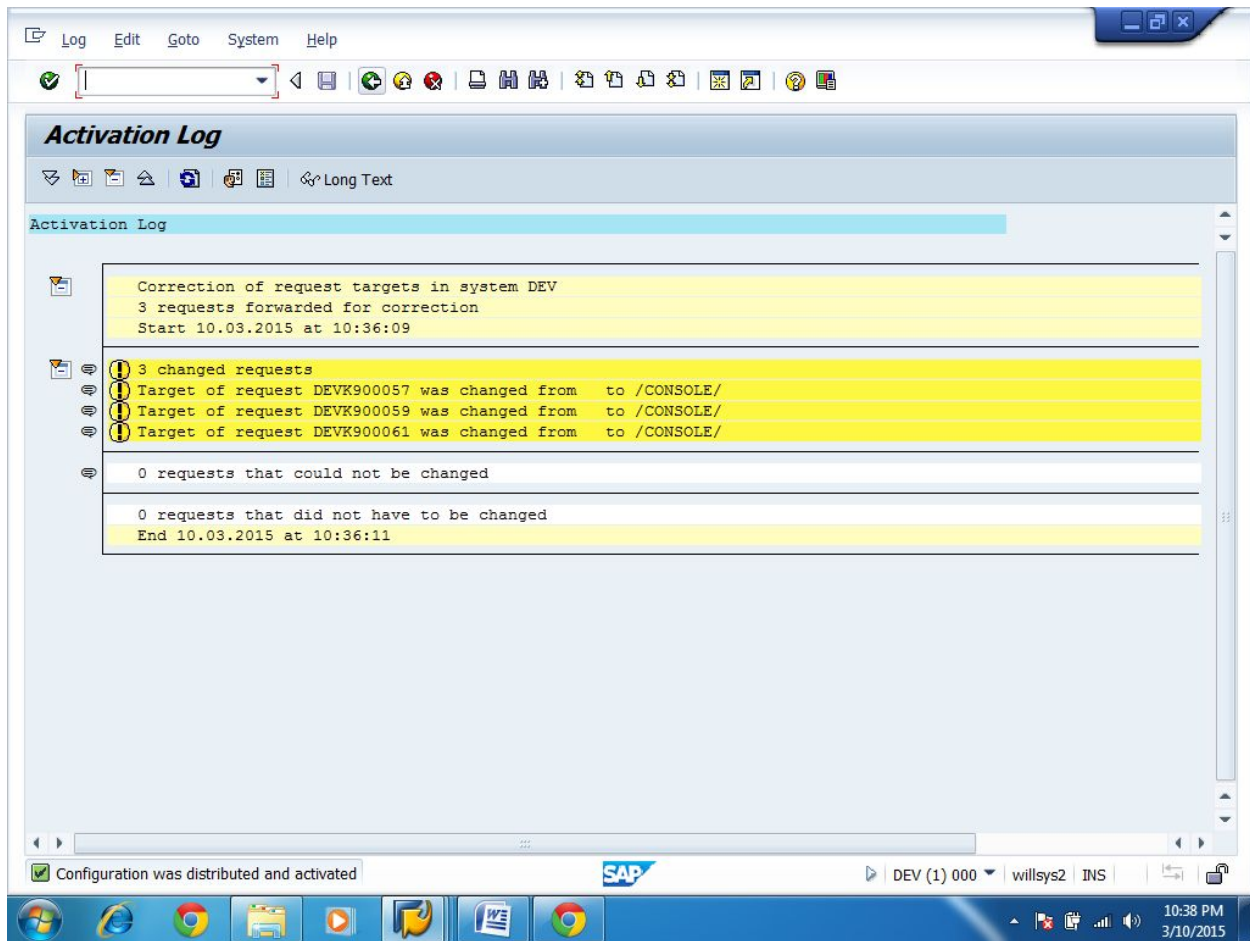
STEP 22:

SAVE the TMS Configuration



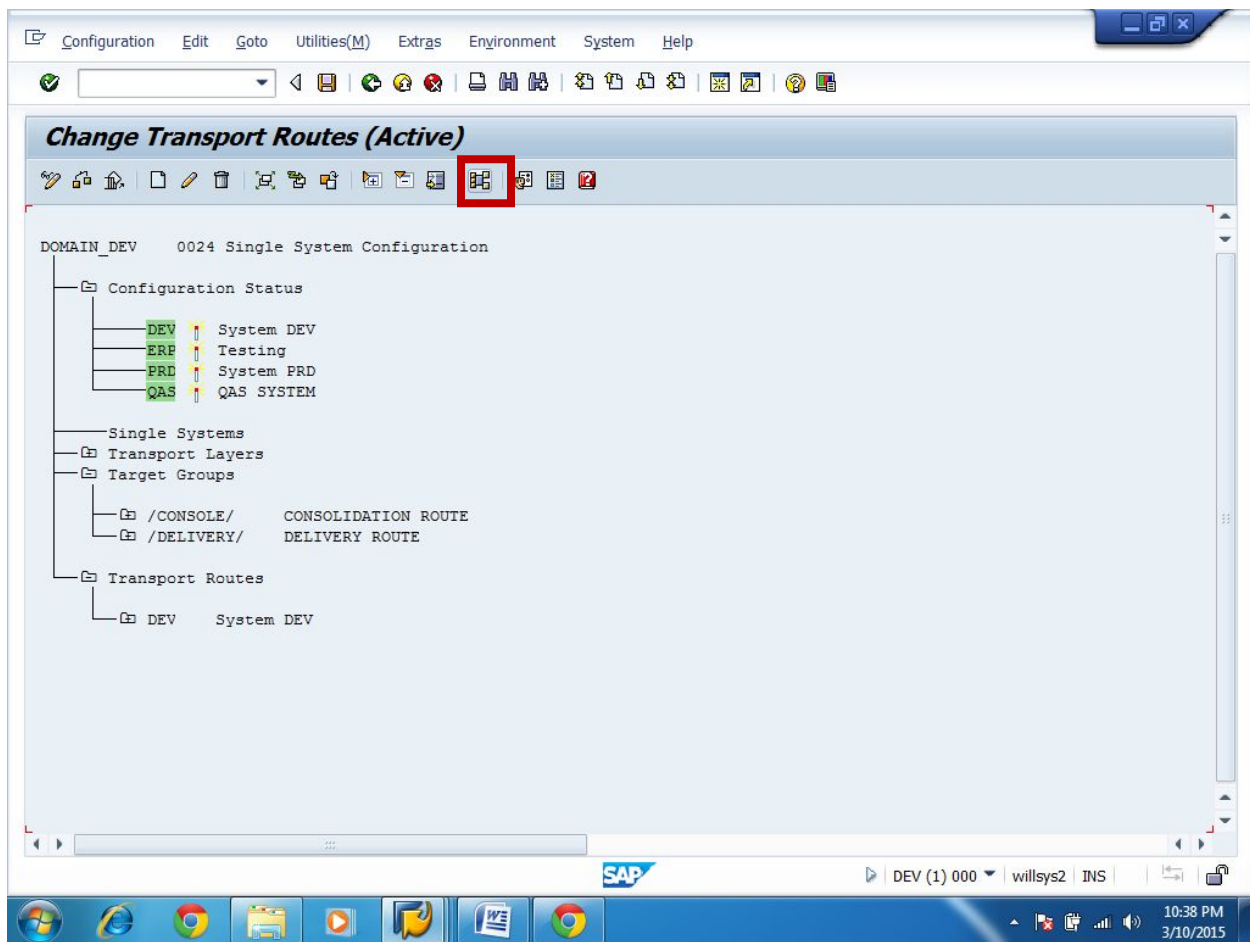


➤ Click Back Button

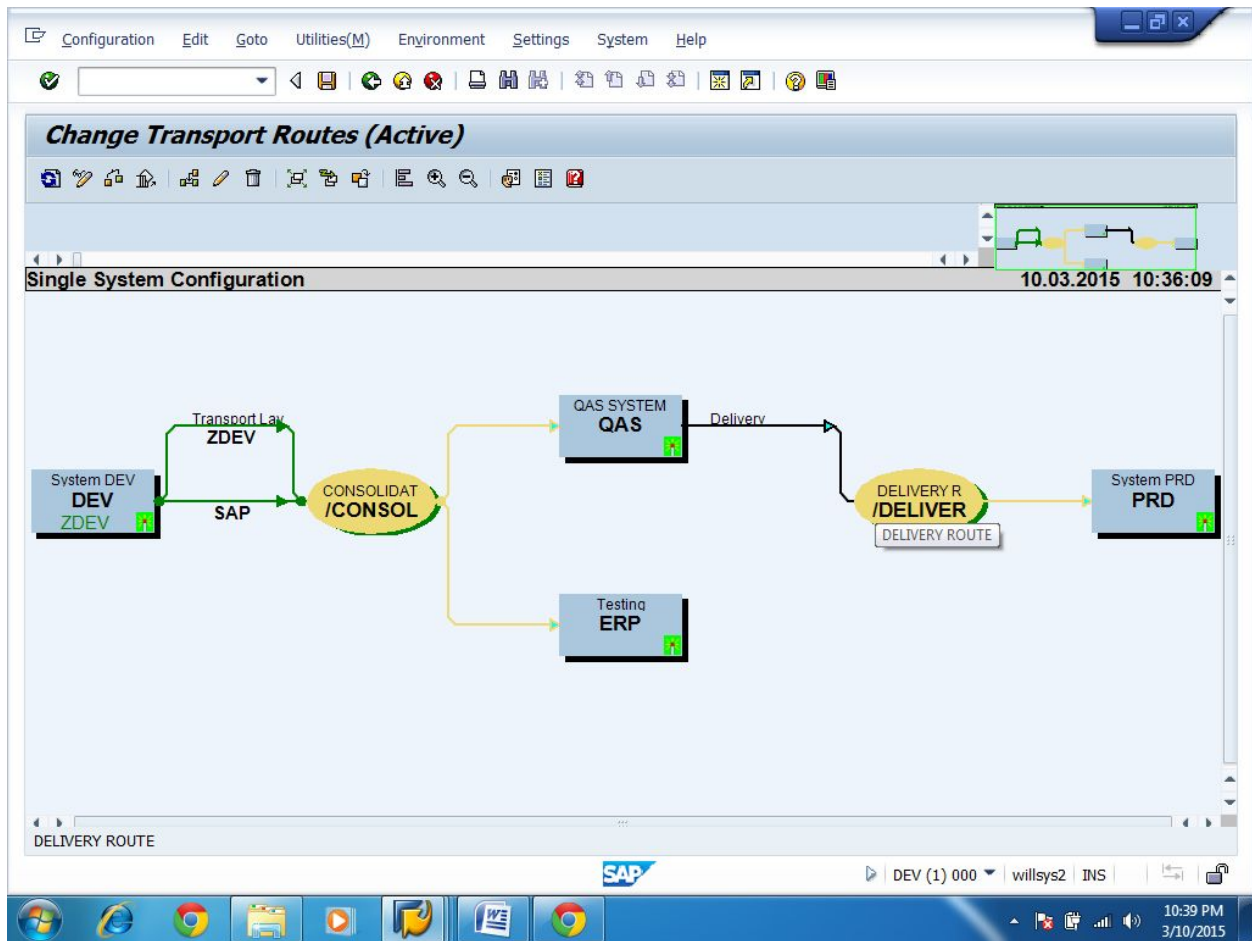


STEP 23:

Click **Graphical Editor** Icon



➤ TMS Configuration Successfully Completed



Related Content:

www.help.sap.com

www.sdn.sap.com/irj/sdn/index.

Disclaimer and Liability Notice:

WILLSYS will not be held liable for any damages caused by using or misusing the information, code or methods suggested in this document, and anyone using these methods does so at his/her own risk.

WILLSYS offers no guarantees and assumes no responsibility or liability of any type with respect to the content of this technical article or code sample, including any liability resulting from incompatibility between the content within this document and the materials and services offered by WILLSYS. You agree that you will not hold, or seek to hold, WILLSYS responsible or liable with respect to the content of this document.