

**APPLIES TO:**

SUPPORT PACKAGE UPGRADE

**SUMMARY:**

This article explains how to perform the SUPPORT PACKAGE UPGRADE.

**AUTHOR:**

K.VENKATA RAMU.

**COMPANY:**

WILLSYS INFOSYSTEMS Pvt. Ltd.,

**CREATED ON:**

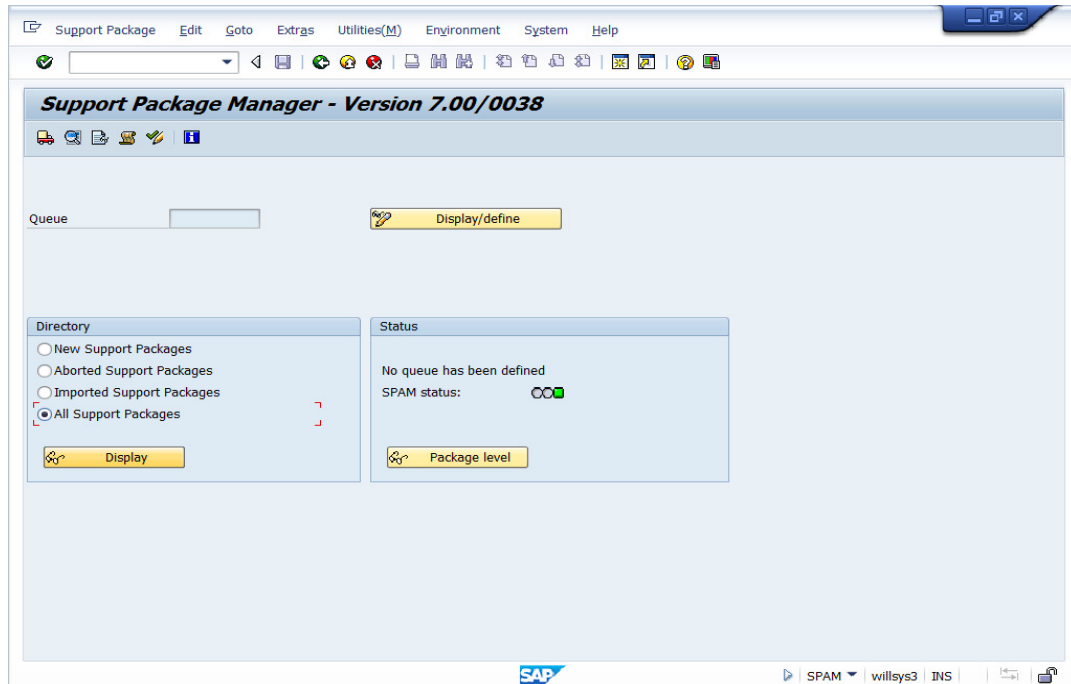
20<sup>th</sup> Apr 2015.



## SUPPORT PACKAGES UPGRADE

### Pre-requisites for applying Support Package:

- Support packages should be always applied in **client 000** with like **DDIC User**.
- Ensure that STMS is configured in client 000.
- Ensure that 2 free back ground process (work) are available (at least).
- Sap packages are incremental. Jumping between packages is not allowed i.e after applying 9 then only 10 can be applied.
- Ensure that you have enough space in the database. Execute DB02 to check the size of each tables space and ensure that each one below 90%
- Ensure that RDDIMPDP, RDDNEWPP background jobs are scheduled in 000 client to apply support packages.
- Execute transaction **SPAM** and see if any previous Support Package import is incomplete. You can proceed ahead unless the previous support package import is successful.
- Ensure that there is enough space in the transport directory. The transport directory is located at **/usr/sap/trans**
- Check your current SAP Support Package Level from transaction SPAM.



### **STEP 1:**

- Copy the Support Packages Into trans Directory and 'cd /usr/sap/trans'.

```
[root@willsys3 ~]# cd /oracle/IMPL/supportpacks/
[root@willsys3 supportpacks]# ll
total 988116
-rwxrwxr-x 1 root root 13357189 Jan 30 2009 KA70010.CAR
-rwxrwxr-x 1 root root 10712262 Aug 28 2011 KA70011.CAR
-rwxrwxr-x 1 root root 15845371 Aug 28 2011 KA70012.CAR
-rwxrwxr-x 1 root root 16821082 Aug 28 2011 KA70013.CAR
-rwxrwxr-x 1 root root 22287266 Aug 28 2011 KA70014.SAR
-rwxrwxr-x 1 root root 95745 Aug 28 2011 KA70015
-rwxrwxr-x 1 root root 10954358 Aug 28 2011 KA70015.SAR
-rwxrwxr-x 1 root root 86891 Aug 28 2011 KA70016
-rwxrwxr-x 1 root root 12319534 Aug 28 2011 KA70016.SAR
-rwxrwxr-x 1 root root 9215664 Aug 28 2011 KA70017.SAR
-rwxrwxr-x 1 root root 83607 Aug 28 2011 KA70018
-rwxrwxr-x 1 root root 7766634 Aug 28 2011 KA70018.SAR
-rwxrwxr-x 1 root root 51640758 Jan 31 2009 KB70010.CAR
```

```
[root@willsys3 supportpacks]# cp -pr KB70010.CAR /usr/sap/trans/  
[root@willsys3 supportpacks]# █
```

### **STEP 2:**

- Go to trans Directory and 'cd /usr/sap/trans'.

```
[root@willsys3 supportpacks]# cd /usr/sap/trans/  
[root@willsys3 trans]# ll  
total 55492  
drwxrwx--x 2 root sapsys 4096 Jan 4 08:53 bin  
drwxrwx--x 2 root sapsys 4096 Jan 10 14:26 buffer  
drwxrwx--x 2 root sapsys 4096 Jan 10 14:26 cofiles  
drwxrwx--x 2 root sapsys 4096 Jan 10 14:26 data  
drwxrwx--x 5 root sapsys 4096 Jan 3 15:16 EPS  
drwxrwx--x 2 root sapsys 4096 Jan 3 15:16 etc  
-rwxrwxr-x 1 root root 51640758 Jan 31 2009 KB70010.CAR  
-rwxrwxr-x 1 qasadm sapsys 5025838 Apr 15 2010 kd70038.sar  
drwxrwx--x 2 root sapsys 4096 Jan 10 14:32 log  
drwxrwx--x 2 root sapsys 4096 Jan 4 09:11 sapnames  
drwxrwx--x 2 root sapsys 4096 Jan 10 14:33 tmp  
[root@willsys3 trans]# █
```

### **STEP 3:**

- Give the Permission and Ownership for Support Packages file.

```
[root@willsys3 trans]# chmod -R 775 KB70010.CAR  
[root@willsys3 trans]# chown -R qasadm:sapsys KB70010.CAR  
[root@willsys3 trans]# ll  
total 55492  
drwxrwx--x 2 root sapsys 4096 Jan 4 08:53 bin  
drwxrwx--x 2 root sapsys 4096 Jan 10 14:26 buffer  
drwxrwx--x 2 root sapsys 4096 Jan 10 14:26 cofiles  
drwxrwx--x 2 root sapsys 4096 Jan 10 14:26 data  
drwxrwx--x 5 root sapsys 4096 Jan 3 15:16 EPS  
drwxrwx--x 2 root sapsys 4096 Jan 3 15:16 etc  
-rwxrwxr-x 1 qasadm sapsys 51640758 Jan 31 2009 KB70010.CAR  
-rwxrwxr-x 1 qasadm sapsys 5025838 Apr 15 2010 kd70038.sar  
drwxrwx--x 2 root sapsys 4096 Jan 10 14:32 log  
drwxrwx--x 2 root sapsys 4096 Jan 4 09:11 sapnames
```

**STEP 4:**

- Login as <SID>adm User .Then Go to trans directory and Uncar the SAR file by using SAPCAR Command.

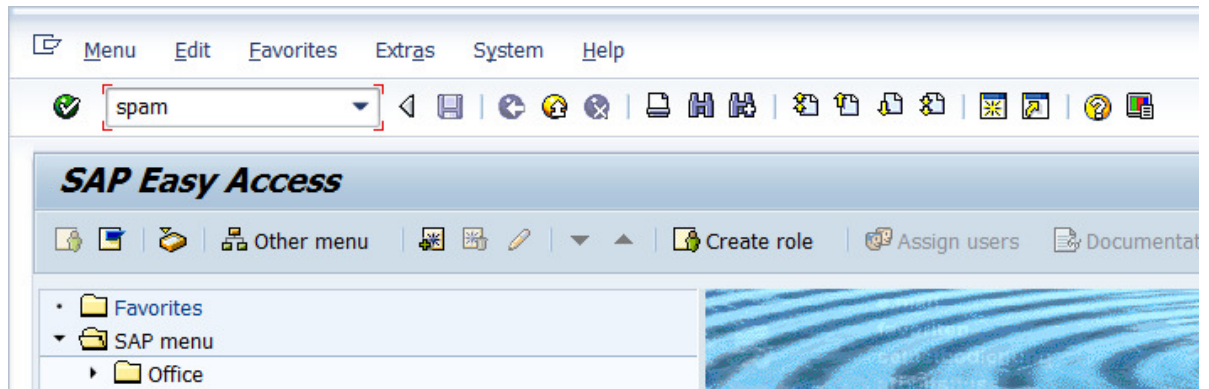
```
[root@willsys3 trans]# su - qasadm
willsys3:qasadm 51> cd /usr/sap/trans/
willsys3:qasadm 52> ll
total 55492
drwxrwx--x 2 root    sapsys    4096 Jan  4  08:53 bin
drwxrwx--x 2 root    sapsys    4096 Jan 10  14:26 buffer
drwxrwx--x 2 root    sapsys    4096 Jan 10  14:26 cofiles
drwxrwx--x 2 root    sapsys    4096 Jan 10  14:26 data
drwxrwx--x 5 root    sapsys    4096 Jan  3  15:16 EPS
drwxrwx--x 2 root    sapsys    4096 Jan  3  15:16 etc
-rwxrwxr-x 1 qasadm  sapsys 51640758 Jan 31  2009 KB70010.CAR
-rwxrwxr-x 1 qasadm  sapsys  5025838 Apr 15  2010 kd70038.sar
drwxrwx--x 2 root    sapsys    4096 Jan 10  14:32 log
drwxrwx--x 2 root    sapsys    4096 Jan  4  09:11 sapnames
drwxrwx--x 2 root    sapsys    4096 Jan 10  14:33 tmp
willsys3:qasadm 52~ █

willsys3:qasadm 53> SAPCAR -xvf KB70010.CAR
processing archive KB70010.CAR...
x EPS/in/CSR0120031469_0025021.ATT
x EPS/in/CSR0120031469_0025021.PAT
willsys3:qasadm 54> █
```



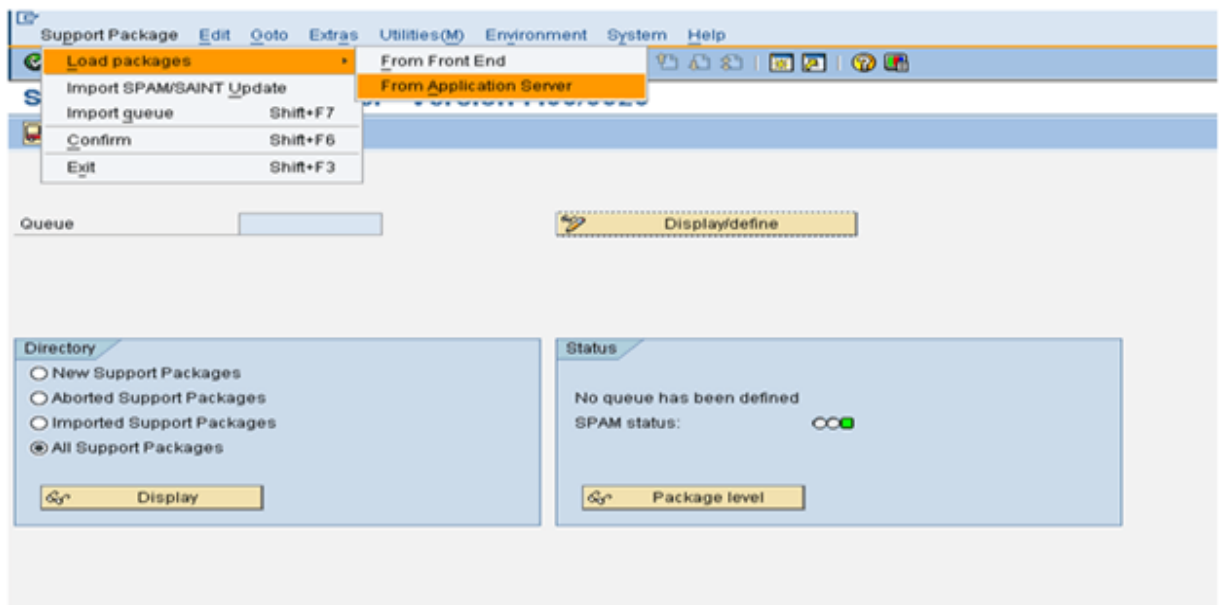
**STEP 5:**

- Login to Client 000 and User like DDIC.
- Execute T-code SPAM.

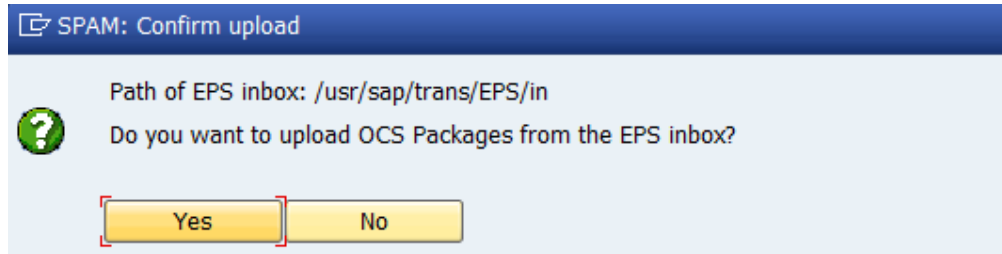


**STEP 6:**

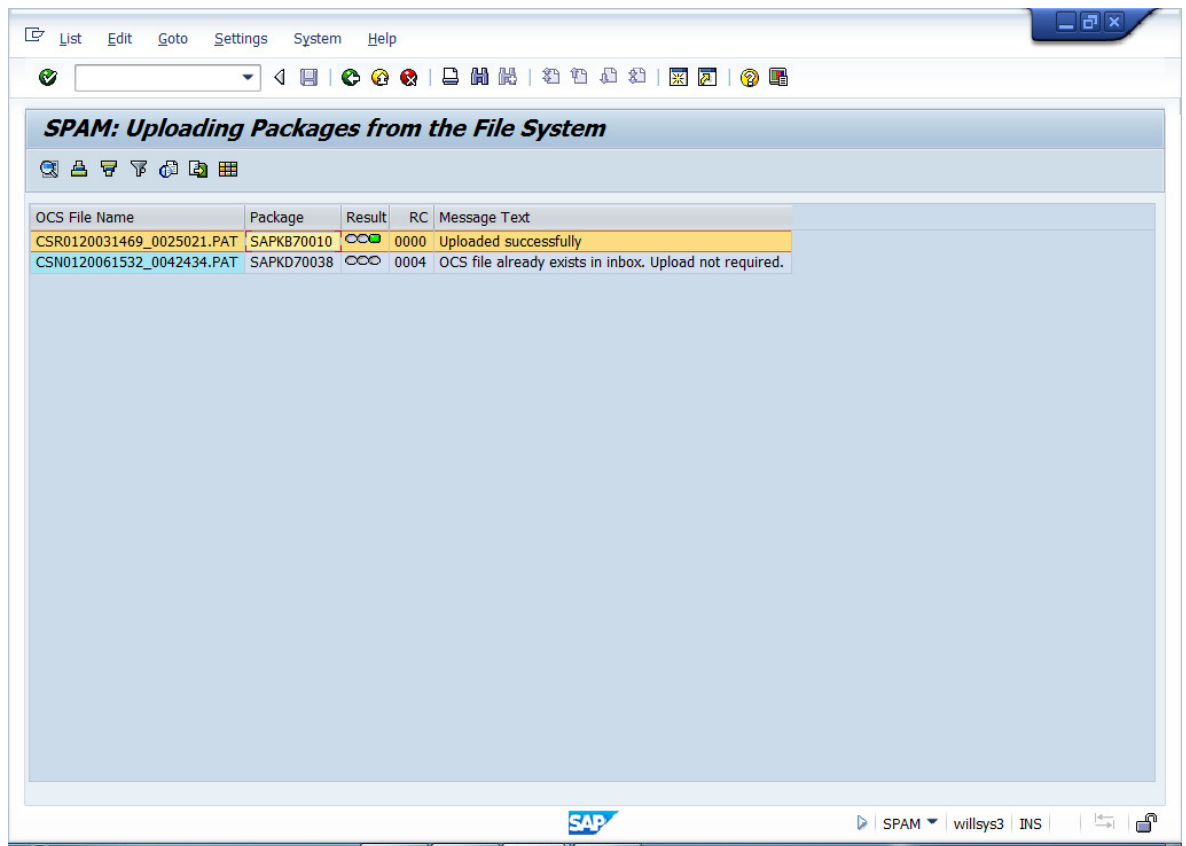
- Load your files from Support Package → LoadPackages → from Front End (or) from Application Server, if support package apply from Application Server .You need to extract it in folder /usr/sap/trans/EPS/in.



- Click YES.

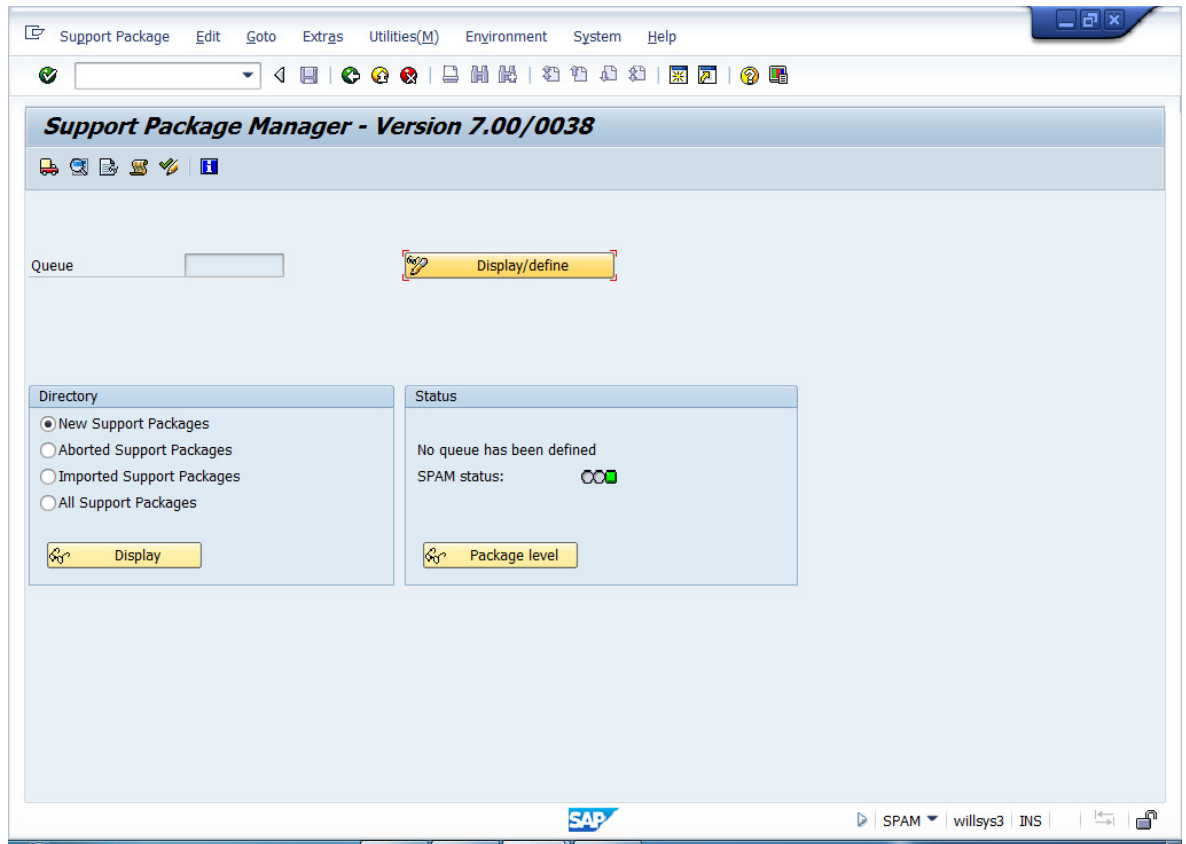


- Support Packaged Loaded. Then go back.



**STEP 7:**

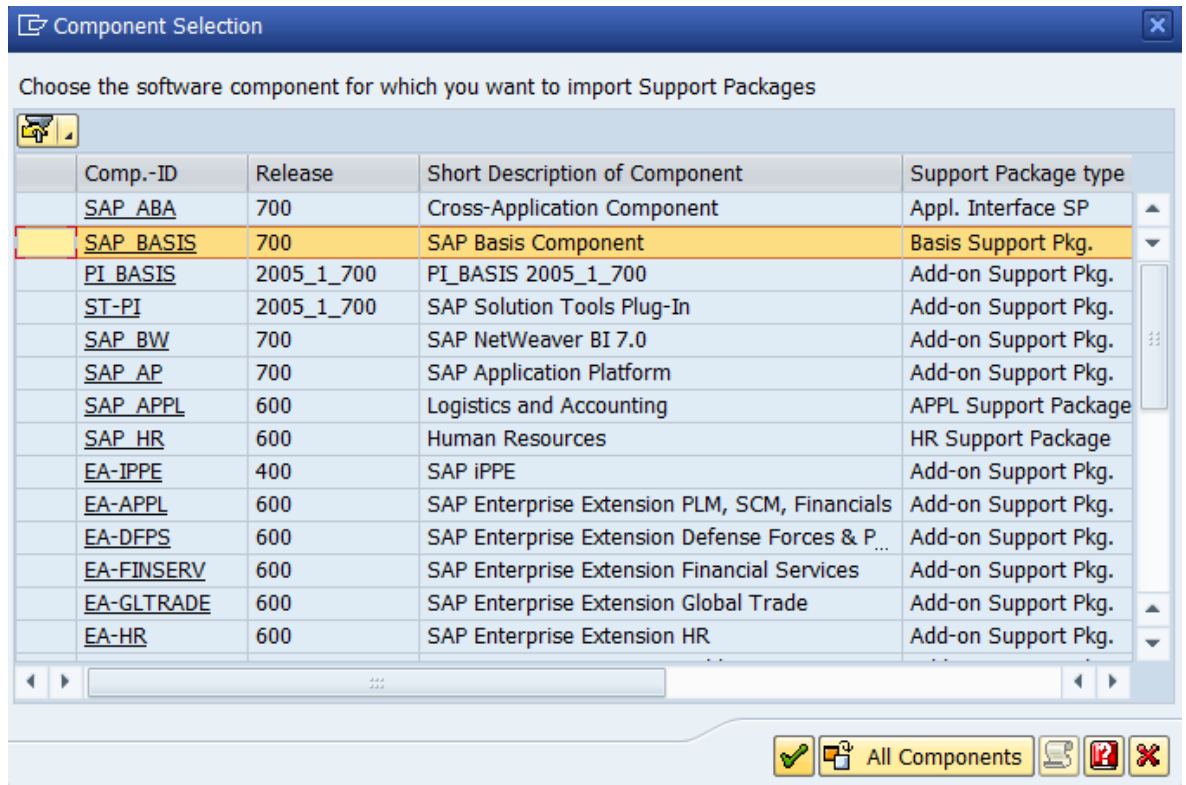
- Click Display/Define Button.



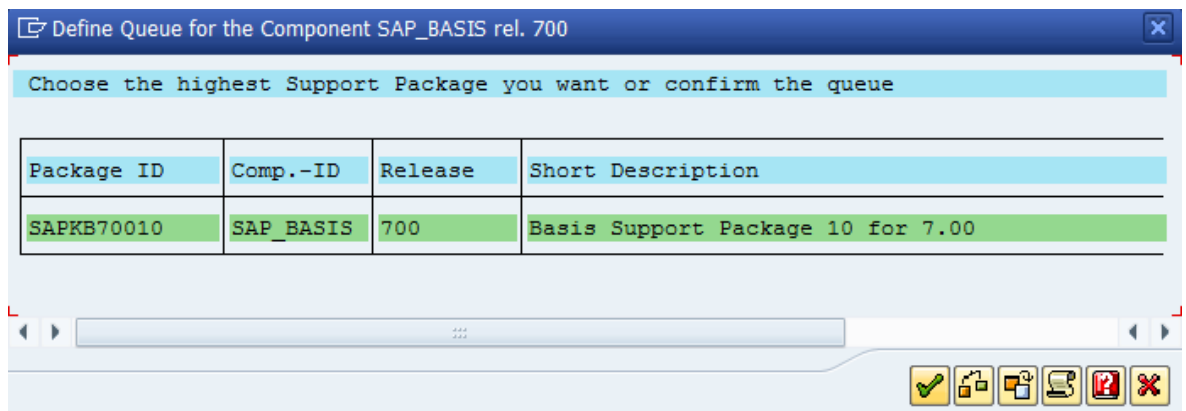


**STEP 8:**

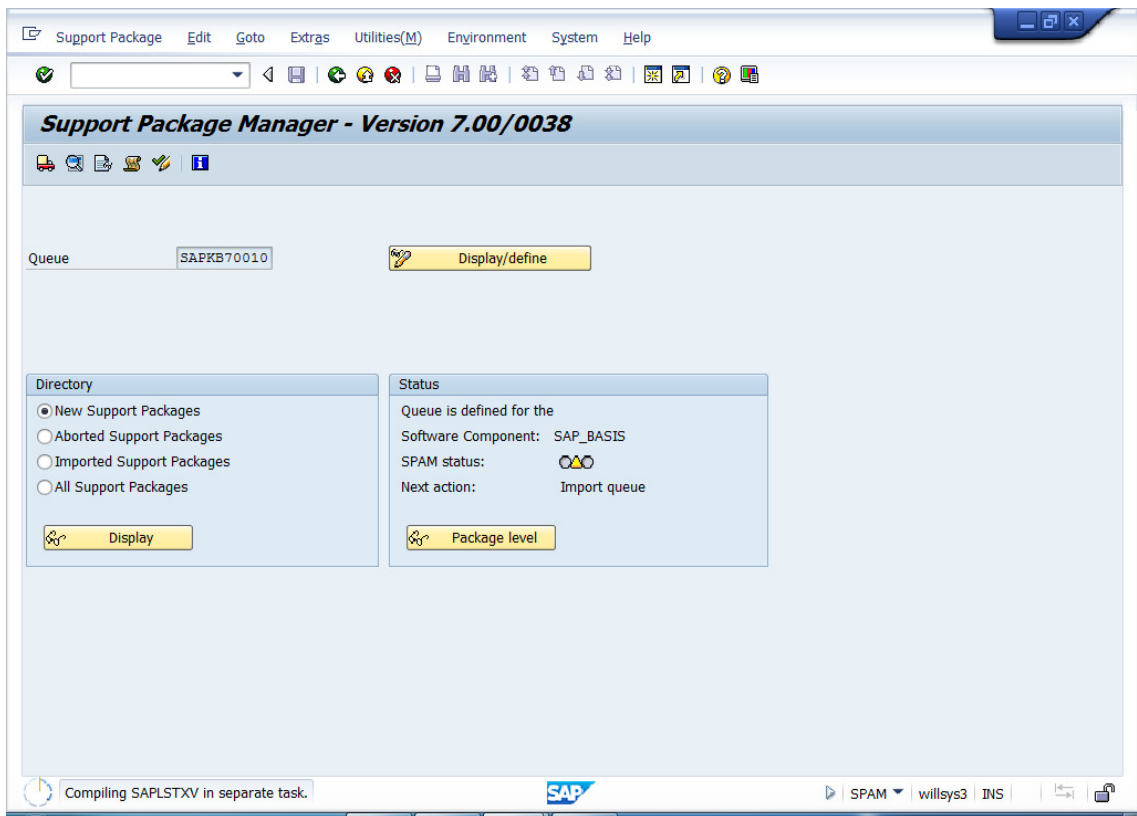
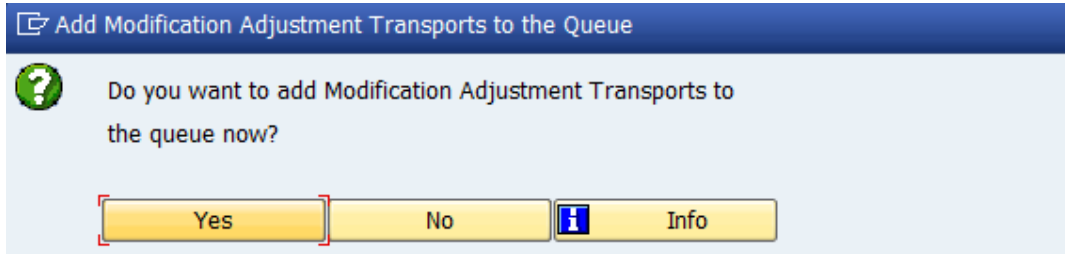
- Select SAP\_BASIS. Then Click CONTINUE.



- Click CONTINUE.

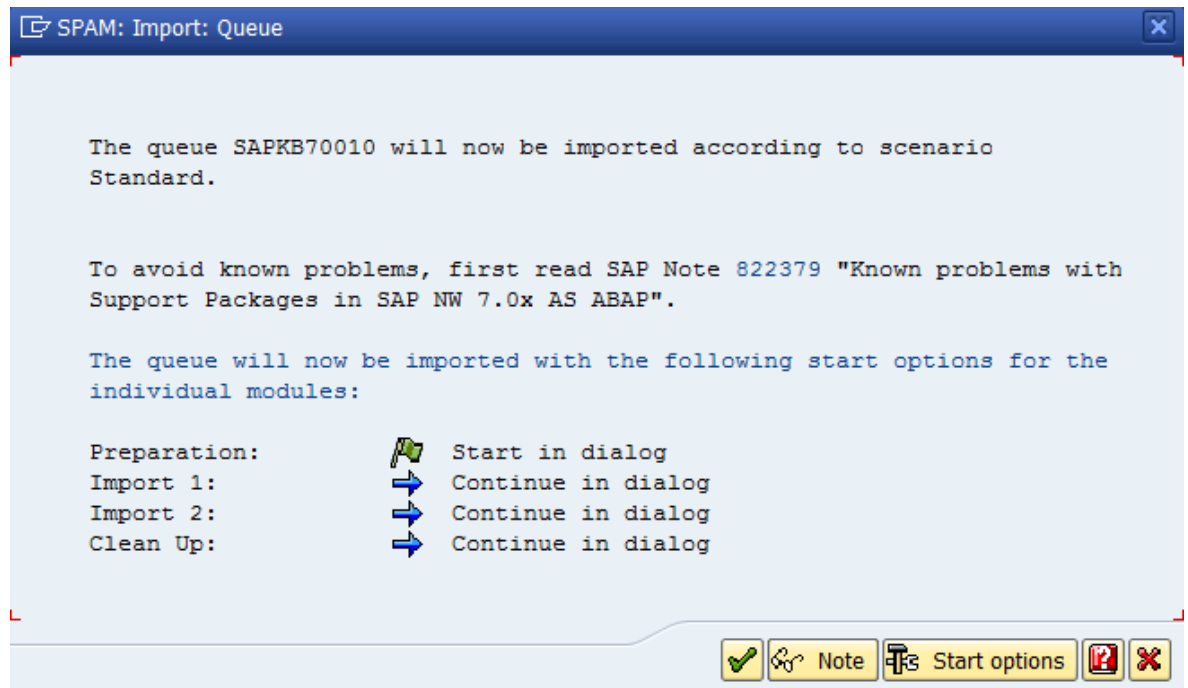


➤ Click on YES.



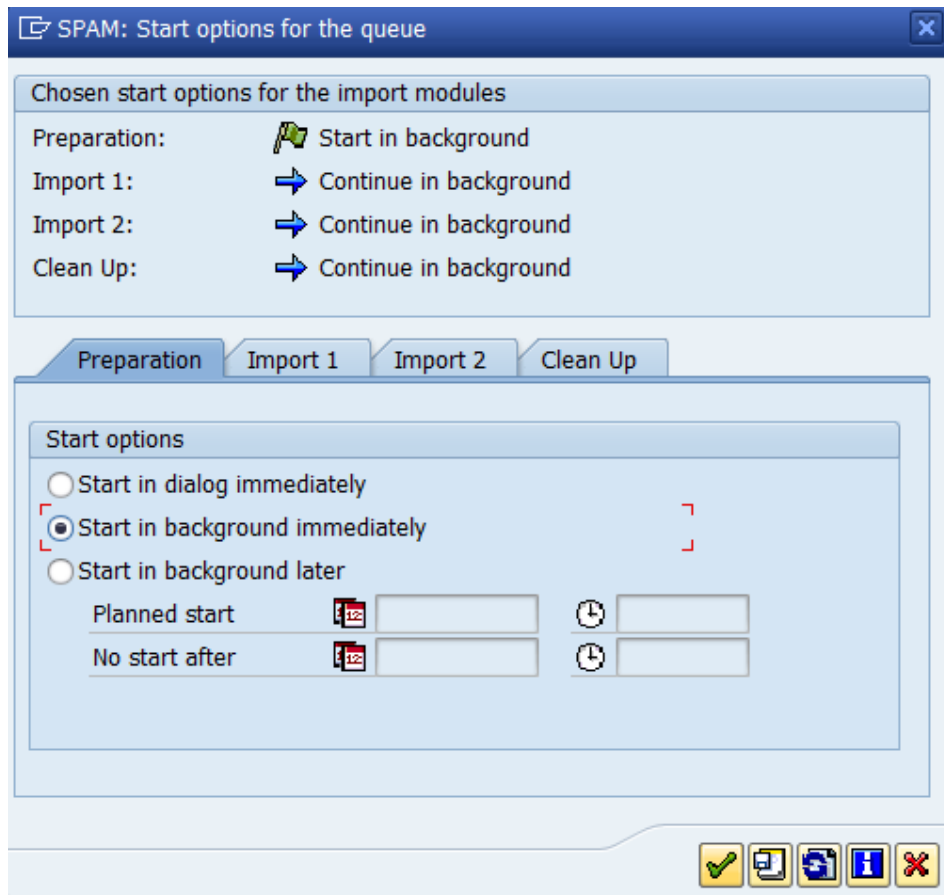
**STEP 9:**

- Schedule in Background. Click START OPTION Button.



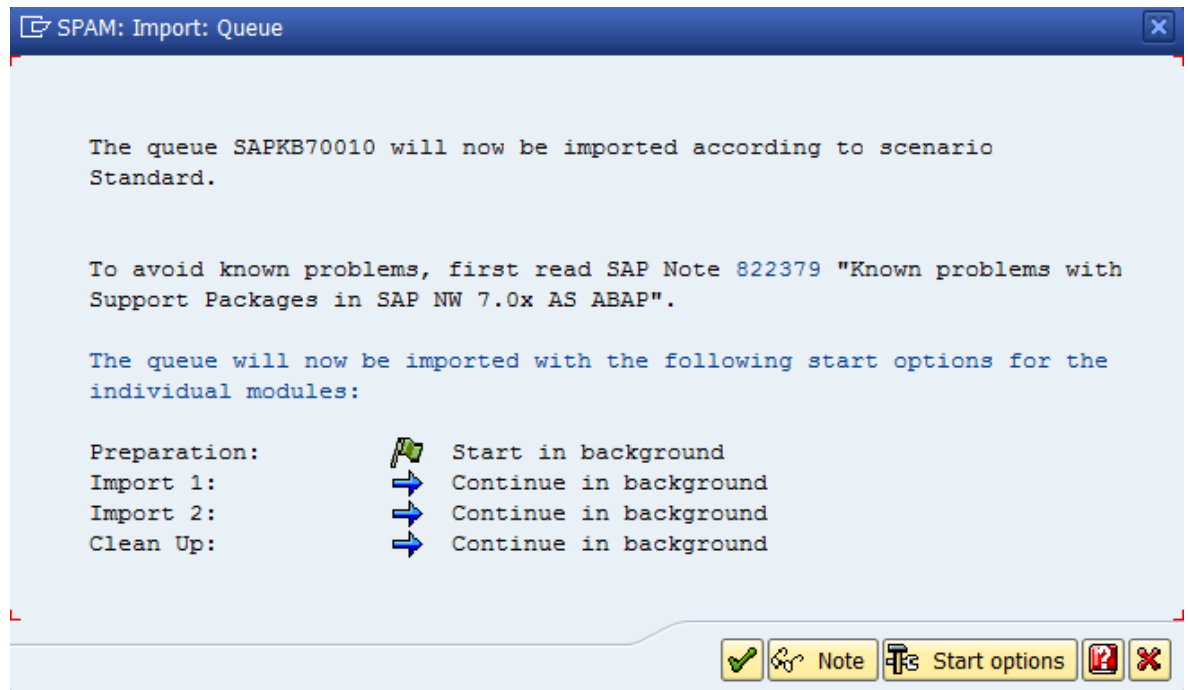
**STEP 10:**

- Select Start in Background Immediately Option. Then Click CONTINUE.

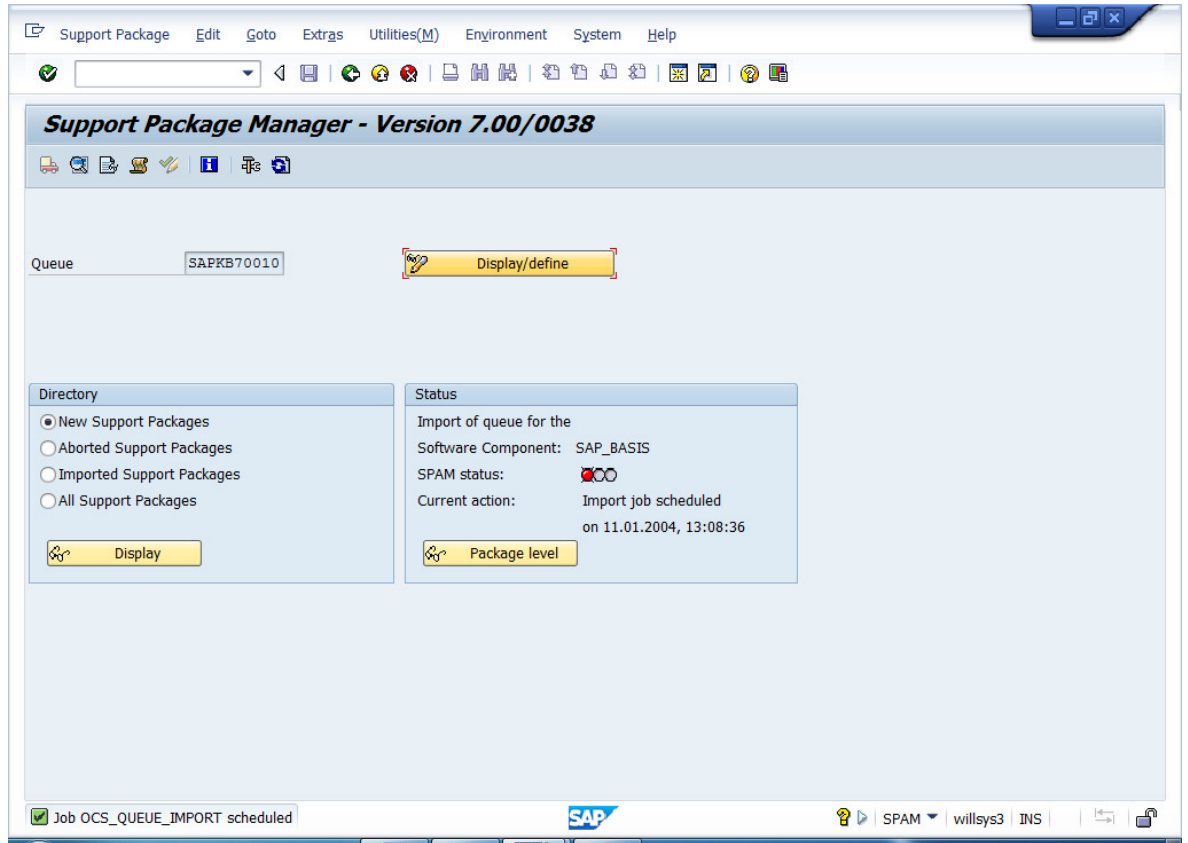


**STEP 11:**

- Click CONTINUE.

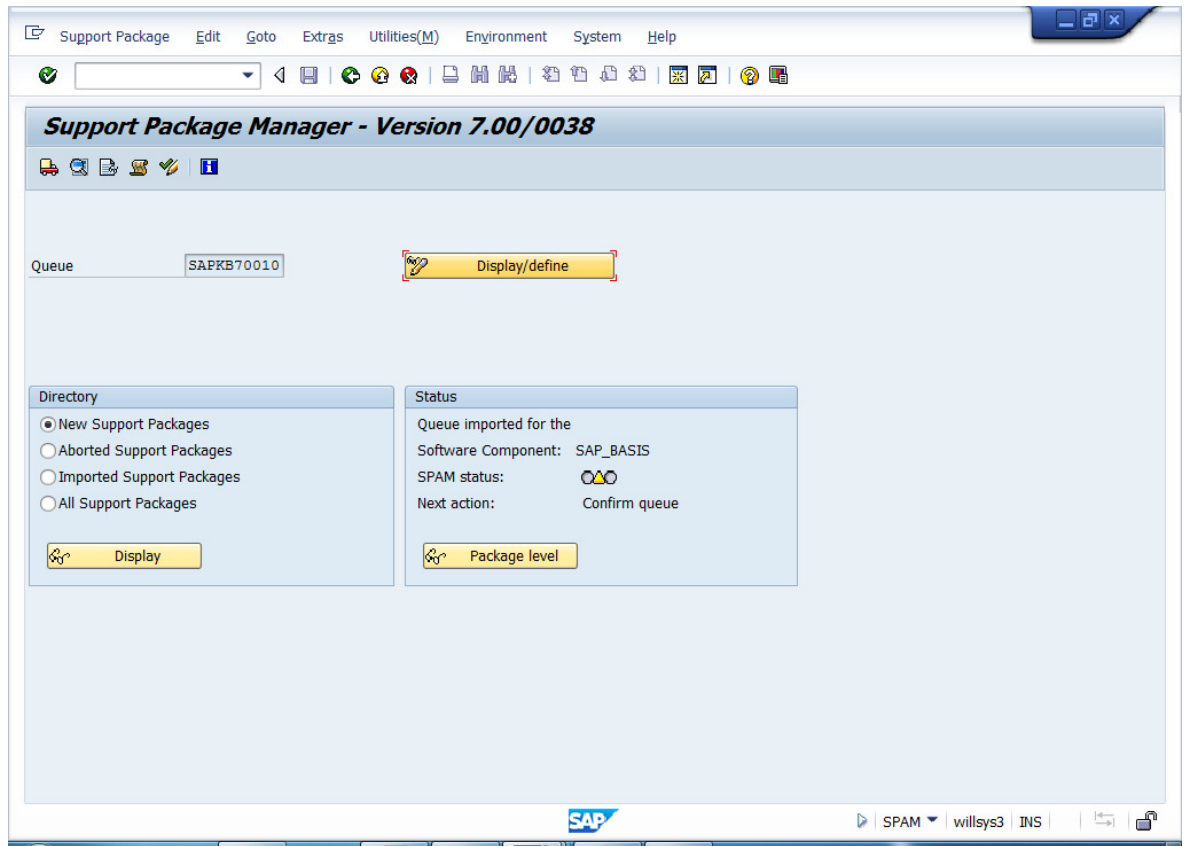


➤ Support Packages Running.

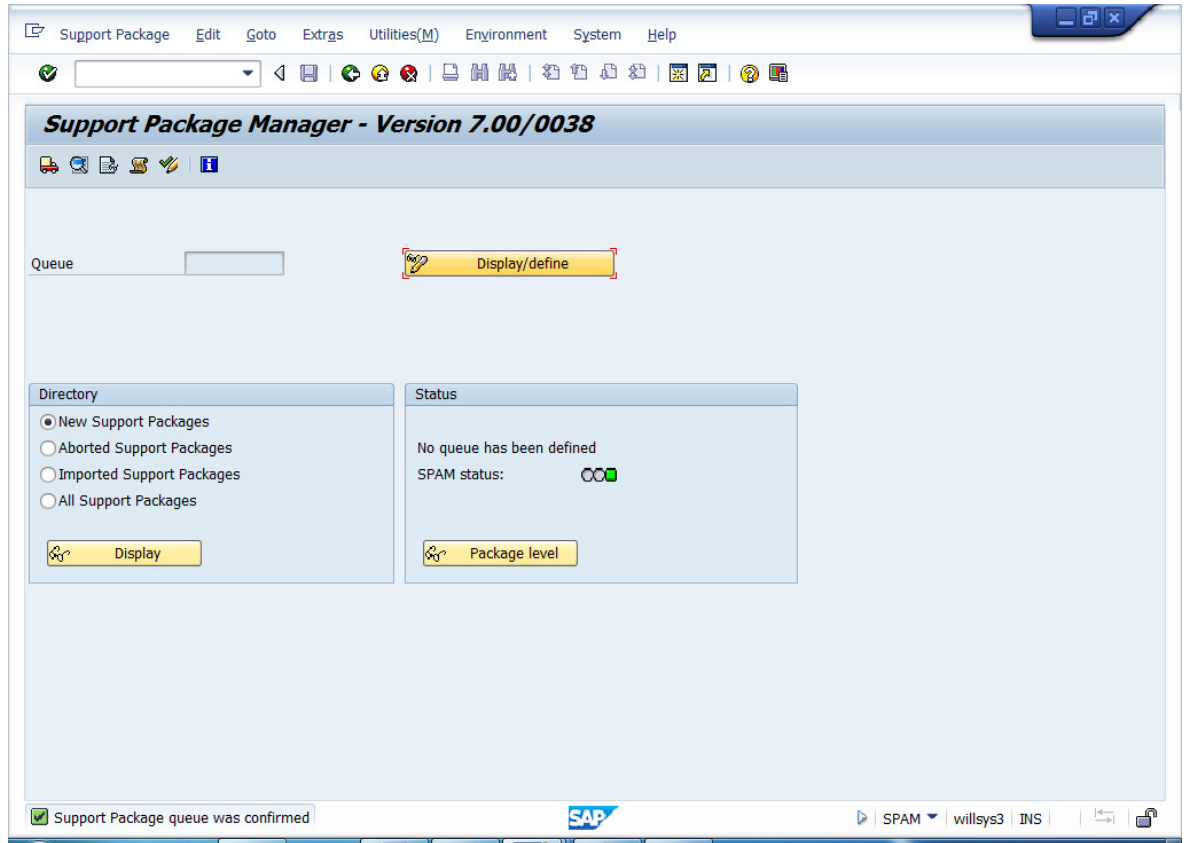




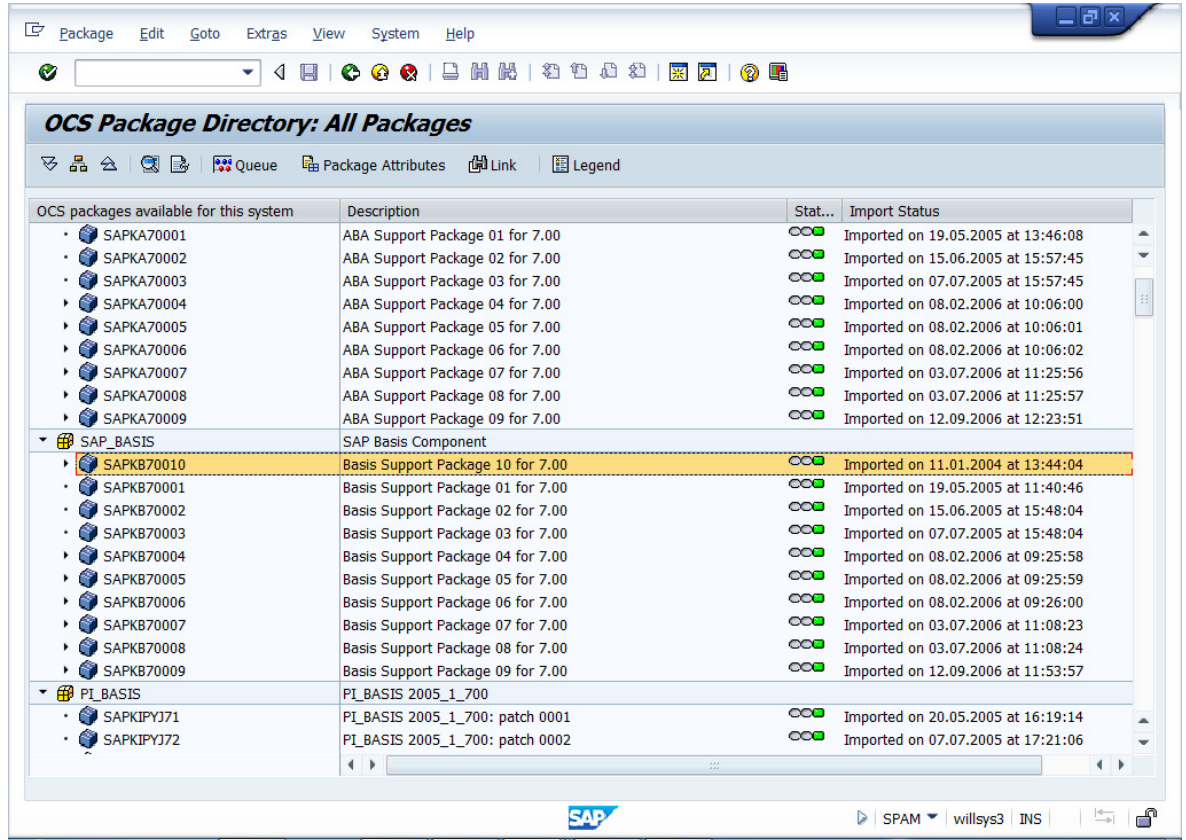
- When the import finish you'll see your "Next Action" is "Confirm Queue".



- Go to Menu Support Packages → Confirm.



- SAP\_BASIS (SAPKB700010 Version) Support Packages Successfully Completed.



The screenshot displays the 'OCS Package Directory: All Packages' window in SAP. The table lists various support packages, with 'SAPKB70010' highlighted in yellow. The status for this package is 'Imported on 11.01.2004 at 13:44:04'.

| OCS packages available for this system | Description                       | Stat... | Import Status                      |
|--|-----------------------------------|---------|------------------------------------|
| • SAPKA70001                           | ABA Support Package 01 for 7.00   | ○○○     | Imported on 19.05.2005 at 13:46:08 |
| • SAPKA70002                           | ABA Support Package 02 for 7.00   | ○○○     | Imported on 15.06.2005 at 15:57:45 |
| • SAPKA70003                           | ABA Support Package 03 for 7.00   | ○○○     | Imported on 07.07.2005 at 15:57:45 |
| • SAPKA70004                           | ABA Support Package 04 for 7.00   | ○○○     | Imported on 08.02.2006 at 10:06:00 |
| • SAPKA70005                           | ABA Support Package 05 for 7.00   | ○○○     | Imported on 08.02.2006 at 10:06:01 |
| • SAPKA70006                           | ABA Support Package 06 for 7.00   | ○○○     | Imported on 08.02.2006 at 10:06:02 |
| • SAPKA70007                           | ABA Support Package 07 for 7.00   | ○○○     | Imported on 03.07.2006 at 11:25:56 |
| • SAPKA70008                           | ABA Support Package 08 for 7.00   | ○○○     | Imported on 03.07.2006 at 11:25:57 |
| • SAPKA70009                           | ABA Support Package 09 for 7.00   | ○○○     | Imported on 12.09.2006 at 12:23:51 |
| ▼ SAP_BASIS                            | SAP Basis Component               |         |                                    |
| • SAPKB70010                           | Basis Support Package 10 for 7.00 | ○○○     | Imported on 11.01.2004 at 13:44:04 |
| • SAPKB70001                           | Basis Support Package 01 for 7.00 | ○○○     | Imported on 19.05.2005 at 11:40:46 |
| • SAPKB70002                           | Basis Support Package 02 for 7.00 | ○○○     | Imported on 15.06.2005 at 15:48:04 |
| • SAPKB70003                           | Basis Support Package 03 for 7.00 | ○○○     | Imported on 07.07.2005 at 15:48:04 |
| • SAPKB70004                           | Basis Support Package 04 for 7.00 | ○○○     | Imported on 08.02.2006 at 09:25:58 |
| • SAPKB70005                           | Basis Support Package 05 for 7.00 | ○○○     | Imported on 08.02.2006 at 09:25:59 |
| • SAPKB70006                           | Basis Support Package 06 for 7.00 | ○○○     | Imported on 08.02.2006 at 09:26:00 |
| • SAPKB70007                           | Basis Support Package 07 for 7.00 | ○○○     | Imported on 03.07.2006 at 11:08:23 |
| • SAPKB70008                           | Basis Support Package 08 for 7.00 | ○○○     | Imported on 03.07.2006 at 11:08:24 |
| • SAPKB70009                           | Basis Support Package 09 for 7.00 | ○○○     | Imported on 12.09.2006 at 11:53:57 |
| ▼ PI_BASIS                             | PI_BASIS 2005_1_700               |         |                                    |
| • SAPKIPYJ71                           | PI_BASIS 2005_1_700: patch 0001   | ○○○     | Imported on 20.05.2005 at 16:19:14 |
| • SAPKIPYJ72                           | PI_BASIS 2005_1_700: patch 0002   | ○○○     | Imported on 07.07.2005 at 17:21:06 |

### Related Content:

<http://service.sap.com>

<http://support.sap.com>

[www.help.sap.com](http://www.help.sap.com)

[www.sdn.sap.com/irj/sdn/index](http://www.sdn.sap.com/irj/sdn/index).

### Disclaimer and Liability Notice:

WILLSYS will not be held liable for any damages caused by using or misusing the information, code or methods suggested in this document, and anyone using these methods does so at his/her own risk.

WILLSYS offers no guarantees and assumes no responsibility or liability of any type with respect to the content of this technical article or code sample, including any liability resulting from incompatibility between the content within this document and the materials and services offered by WILLSYS. You agree that you will not hold, or seek to hold, WILLSYS responsible or liable with respect to the content of this document.