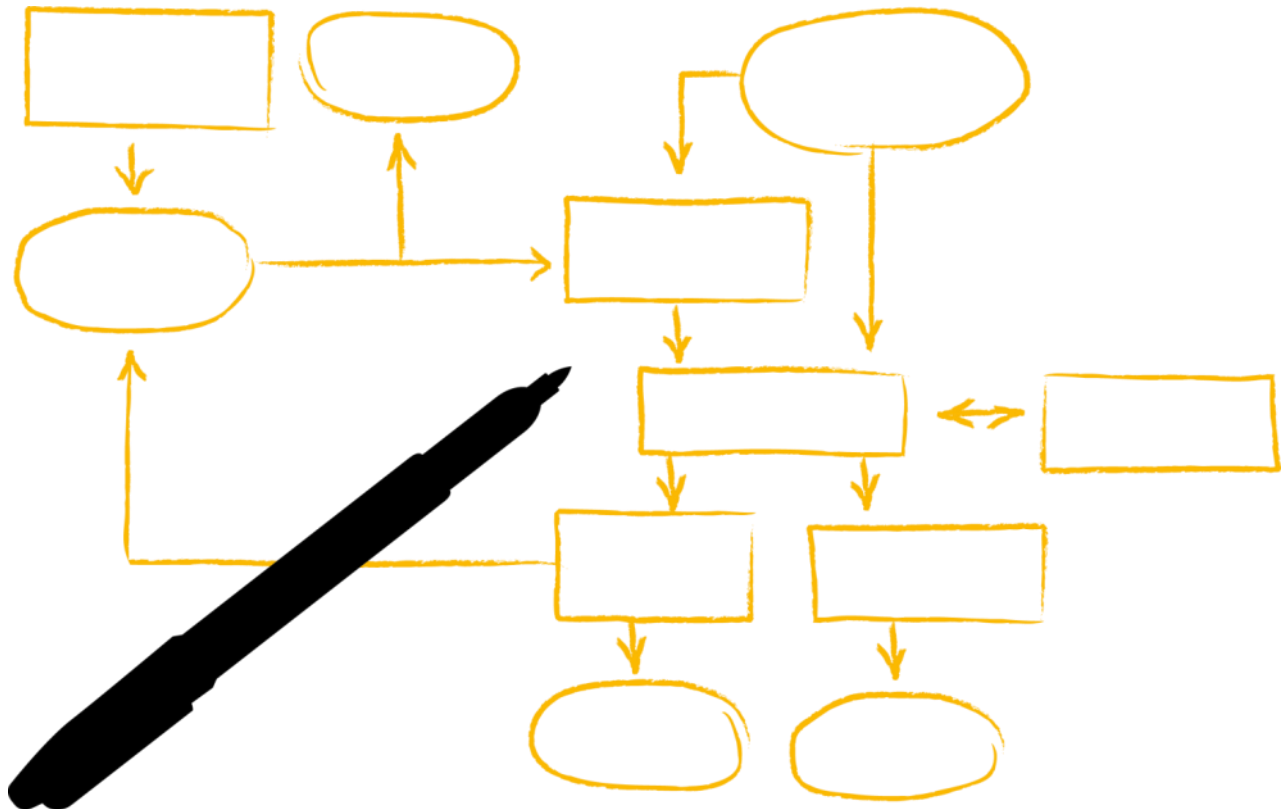


Technical Details + Process Flow – System Copy and Migration

Part of Software Provisioning Manager 1.0 SP 18

SAP SE – Product Management
October 2016

Public



Disclaimer

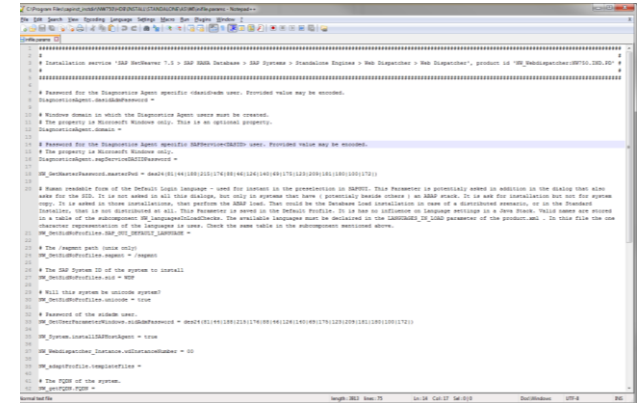
This presentation outlines our general product direction and should not be relied on in making a purchase decision. This presentation is not subject to your license agreement or any other agreement with SAP. SAP has no obligation to pursue any course of business outlined in this presentation or to develop or release any functionality mentioned in this presentation. This presentation and SAP's strategy and possible future developments are subject to change and may be changed by SAP at any time for any reason without notice. This document is provided without a warranty of any kind, either express or implied, including but not limited to, the implied warranties of merchantability, fitness for a particular purpose, or non-infringement. SAP assumes no responsibility for errors or omissions in this document, except if such damages were caused by SAP intentionally or grossly negligent.

System copy and migration

Changes with Software Provisioning Manager 1.0 SP 18

General

- 7.x: New **unattended execution mode** of Software Provisioning Manager, using a parameter file
 - Software Provisioning Manager can be executed in unattended mode using `infile.xml`, historically described in [SAP Note 950619](#)
 - To get an easier + more reliable procedure, we introduce new unattended parameter file `infile.params`
 - Changed from bulky XML format to plain text format – making the file easier to understand, to use and to maintain with commented name-value pairs that resemble corresponding dialogs in dialog mode of Software Provisioning Manager
 - Flexible reuse of one parameter file for several use cases (using same technology stack [ABAP/Java/dual-stack] + same database platform [such as SAP HANA]) – for example, one parameter file for different product versions, versions of Software Provisioning Manager, options, parameters, and hosts vs. `infile.xml` that is heavily bound to initial use case (same version of Software Provisioning Manager, same use case, practically same parameters – although changing of parameters technically possible, changes are required at several locations inside the XML file, which is error-prone)
 - Easier overall handling (such as of working directory)
 - For more information, see [SAP Note 2230669](#)
- Enablement of new product versions (such as of SAP S/4HANA 1610)
- Following the SAP Kernel strategy:
 - There are **two dedicated download archives** of Software Provisioning Manager for operating systems that are supported by SAP Kernel 720, but no longer supported by SAP Kernel 740 – see [SAP Note 1680045](#) for a list of affected operating system versions
 - With release of Software Provisioning Manager 1.0 SPS 18, archives `70SWPM*.SAR` and `SWPM*.SAR` will stop working on those outdated operating system versions – instead, use dedicated `RMOSWPM*.SAR` and `RMOS70SWPM*.SAR` archives on those outdated OS versions (*RMOS* stands for Restricted Maintenance Operating System)
 - Note that those dedicated RMOS archives will not get improvements in the future
 - SAP maintenance for RMOS archives will be finally restricted to the end of 2017



System copy and migration

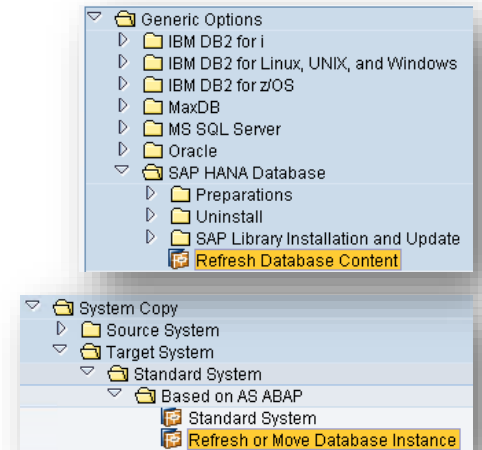
Changes with Software Provisioning Manager 1.0 SP 18

General (continued)

- Platform-specific improvements:
 - Enablement of new platform versions (OS/DB)
 - Enhancements of database-specific features
 - Improved integration of AlwaysOn Support for Microsoft SQL Server – for more information, see the corresponding guide available at <http://support.sap.com/sltoolset> → *System Provisioning*
 - Enhancements of IBM DB2 for z/OS CLI failover feature – for more information about the IBM DB2 for z/OS CLI failover feature, see [SAP Note 1777242](#)
 - Enhancements of multi-tenant DB on Oracle 12
 - Support of table space pools for IBM DB2 UDB for Linux, UNIX, and Windows

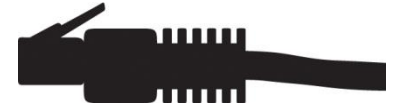
System copy

- 7.x: new option to only **refresh database content without reinstallation** of the database
 - Offered for ABAP systems running on SAP HANA so far
 - Called *Refresh Database Content* in Welcome screen of *Software Provisioning Manager*
 - Offered in addition to former *Database Refresh or Move* option, where database gets re-installed as part of the procedure – to better differentiate both options, the former option got renamed to *Refresh or Move Database Instance*
 - Allows optional use of backup instead of performing a load-based refresh
- 7.x: Option to prepare database for DMO migration to IBM DB2 UDB for Linux, UNIX, and Windows
 - Option to add another empty, but prepared (such as in terms of users and schema) database to a system as **preparation to run Database Migration Option** (DMO) of Software Update Manager for a combined update and database migration to IBM DB2 UDB for Linux, UNIX, and Windows



System copy and migration

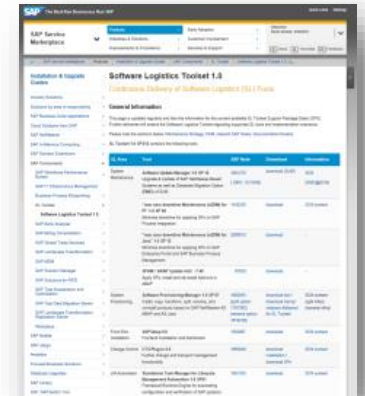
1. Download: tool



 You **download** latest version of *Software Provisioning Manager 1.0* from SAP Support Portal at: <http://support.sap.com/sltoolset>

Choose the archive for your release and operating system version (for more information, see SAP Note [1680045](#)) – for example:

- If your system is based on SAP NetWeaver **7.0x** and your OS is **not** supporting SAP Kernel 740, use the archive **RMOS70**SWPM10SP<SP number>_<patch level>*.SAR
- If your system is based on SAP NetWeaver **7.1x** and higher and your OS is **not** supporting SAP Kernel 740, use the archive **RMOS**SWPM10SP<SP number>_<patch level>*.SAR

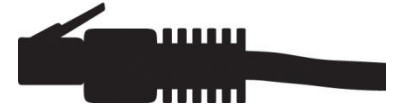



SAP recommends that you download the latest version of *Software Provisioning Manager 1.0*, as it contains latest corrections and is updated regularly – even if you have installation media available!



System copy and migration

1. Download: documentation



 You **download** latest version of **system copy guide**, also from SAP Support Portal at:
<http://support.sap.com/sltoolset> → *System Provisioning*



System copy and migration

2. Plan

 You check **constraints** and **released use cases** listed in documentation

 You check the **product version and platform coverage**

- See product availability matrix of SL Toolset in SAP Support Portal at: <http://support.sap.com/pam>
- Supported product versions for system copy:
 - Products based on SAP NetWeaver 7.0x and higher (including Support Releases)
 - All including standalone engines (such as SAP liveCache) and latest backward releases
- For more details, see:
 - System copy of systems based on SAP NetWeaver 7.0x: [SAP Note 1768158](#)
 - System copy of systems based on SAP NetWeaver 7.1x and higher: [SAP Note 1738258](#)

 You read the **SAP Note that contains latest information:**

- SAP Note [1680045](#) (*Release Note for Software Provisioning Manager 1.0*)

System copy and migration

3. Prepare



- You perform **preparation tasks** as described in guide
- You **unpack** the **Software Provisioning Manager 1.0** archive:
 - Make sure latest version of SAPCAR archiving tool is available on each host where you want to run *Software Provisioning Manager*
 - Available in SAP Support Portal at: <http://support.sap.com/swdc> → *Software Downloads* → Search for SAPCAR
 - For more information about SAPCAR, see [SAP Note 212876](#)
 - Unpack *Software Provisioning Manager 1.0* archive to a local directory using the following command:
`SAPCAR -xvf <download directory>/<path>/<Archive>.SAR -R <unpack directory>`

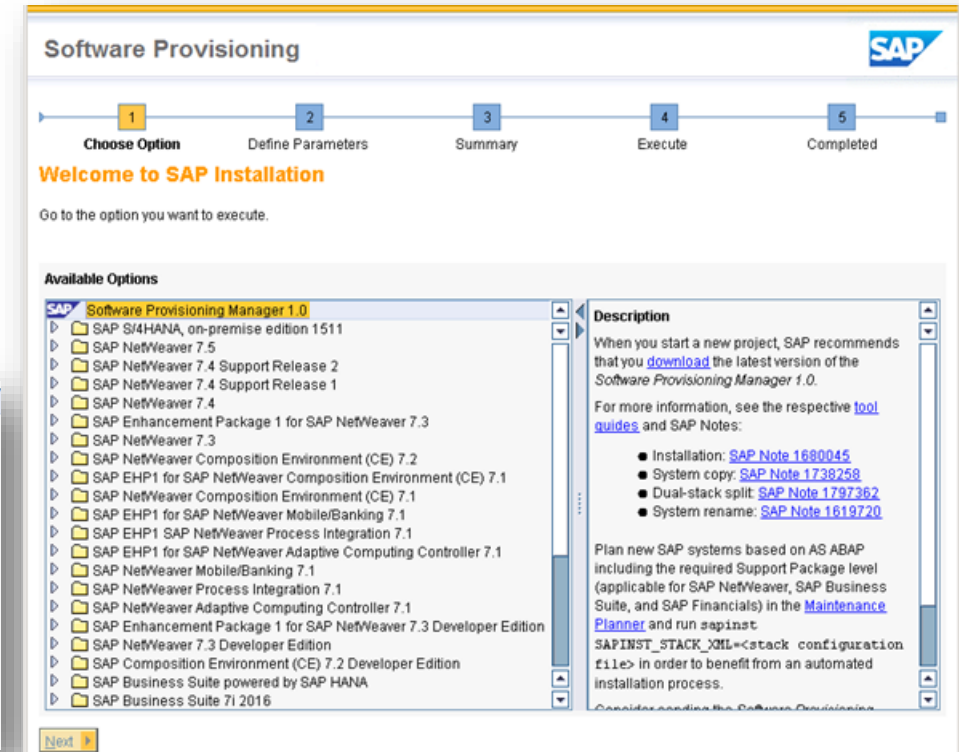
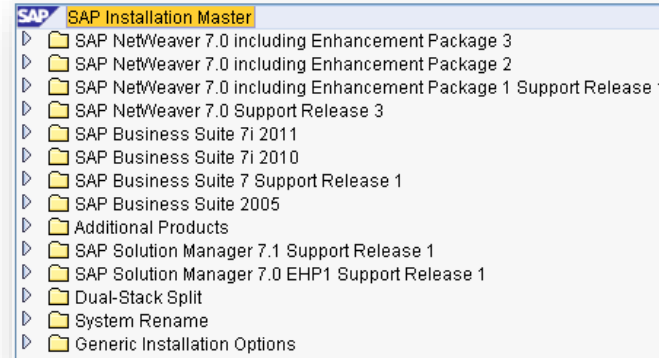
System copy and migration

4. Execution



You start as described in the documentation:

- For example, double-click `sapinst.exe` from directory to which you unpacked the archive on Microsoft Windows
- *Welcome* screen offers services for several product versions and database types



System copy and migration

4. Execution – export

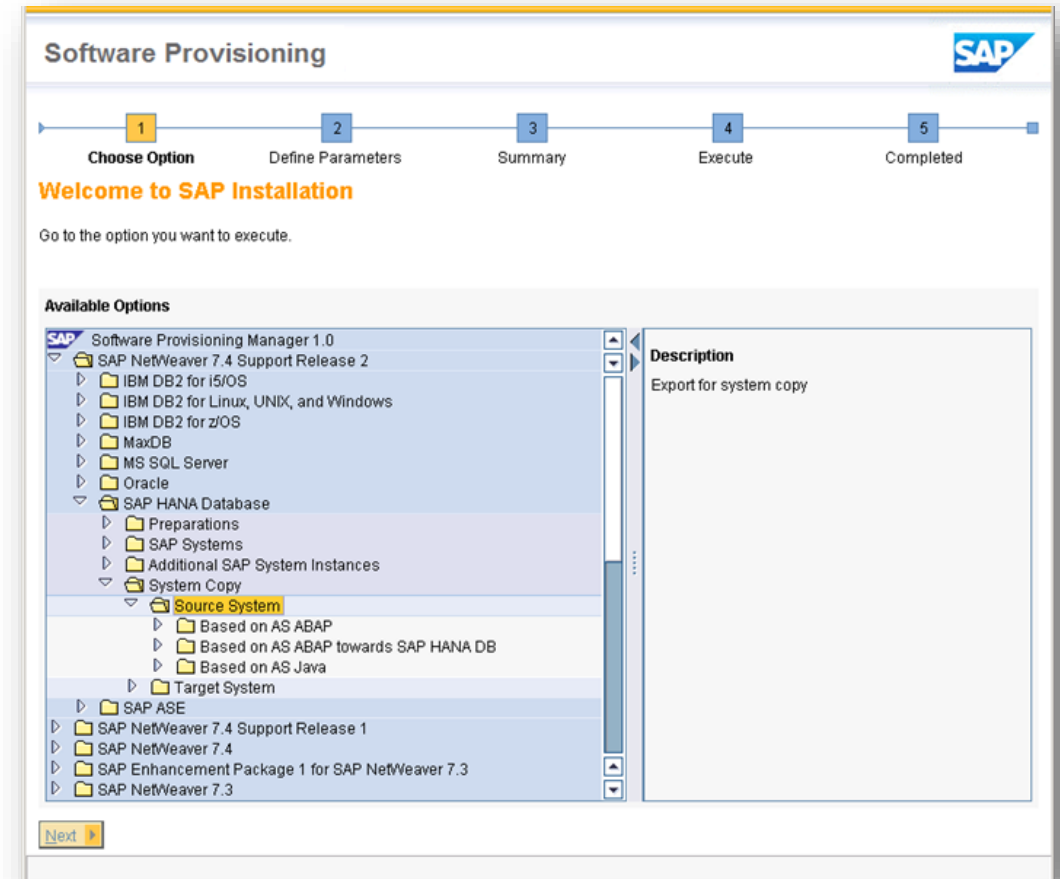


On the **source** system, you choose the services you want to execute:

- On *Welcome* screen, choose <Your SAP product version>
 - <Your database>
 - *System Copy*
 - *Source System*
 - <Your Application Server>
 - <Your Service>

You follow the **instructions** on the screens

- Enter required parameters as described in the documentation



System copy and migration

4. Execution – import

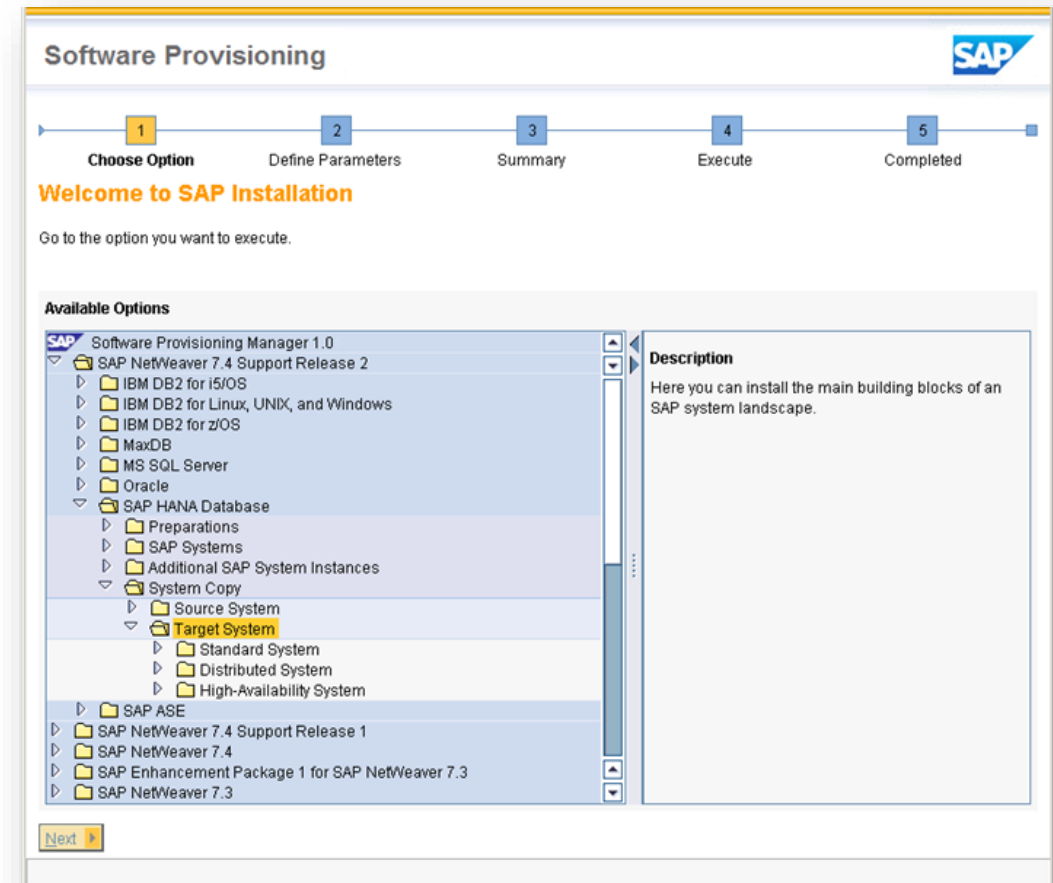


On the **target** system, you choose the services you want to execute:

- On *Welcome* screen, choose <Your SAP product version>
 - <Your database>
 - *System Copy*
 - *Target System*
 - <Distribution Option>
 - <Your Application Server>
 - <Your Service>

You follow the **instructions** on the screens

- Enter required parameters as described in the documentation



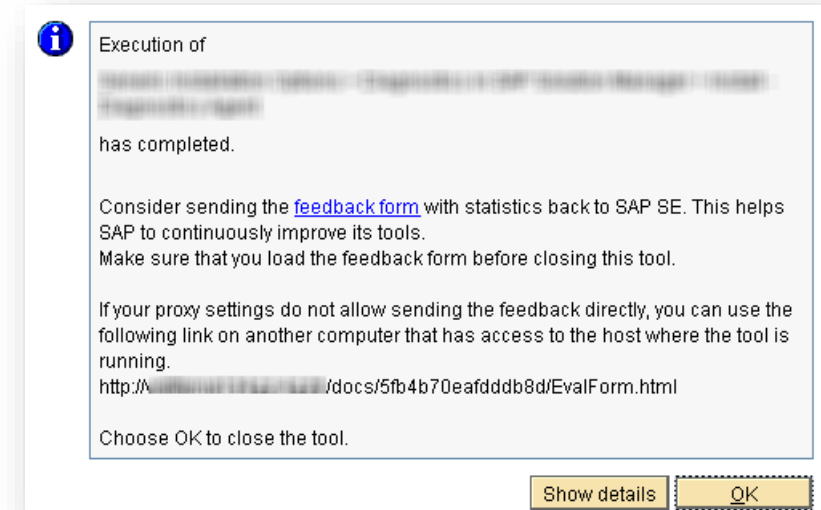
System copy and migration

4. Execution



After the procedure finished, the success dialog of *software provisioning manager* offers a **link to statistical runtime data + direct feedback to SAP**

- By clicking, evaluation form is opened in your Web browser
 - *Send* button → anonymous statistical **runtime** data of executed service sent to SAP; optionally, you can provide additional feedback
 - Full transparency what information is sent (see *Process XML* field)
 - Data is sent via email
- This data is used by SAP to build anonymous **analytical database**
 - Concerning used processes and runtimes on different platforms
 - Will help SAP to prioritize and address the right topics
 - In the future, might enable us to make predictions concerning runtimes
- For more information, see this [blog in SAP Community Network](#)



System copy and migration

5. Follow-up activities



- You perform **follow-up activities** as described in the documentation
- **After successful execution of your project, you remove tool from host**
 - For a new project, download latest version of *Software Provisioning Manager*

Summary

Software Provisioning Manager 1.0 provides latest SAPinst tool version with software provisioning services (such as system copy) **for several products and releases for all platforms, including backward releases – available from one archive**

Always download latest version of *Software Provisioning Manager 1.0* – this way, you automatically get support of latest product versions and platform support, including latest corrections in the tool and supported processes

Further information



For more information on **Software Provisioning Manager 1.0**:

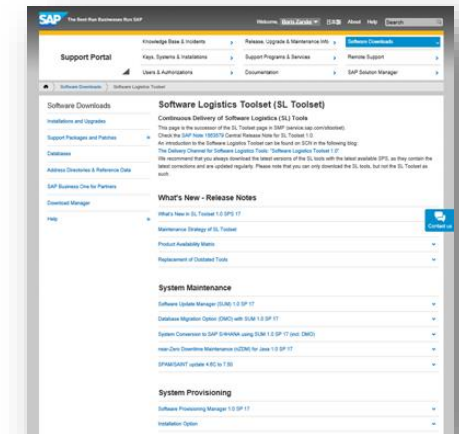
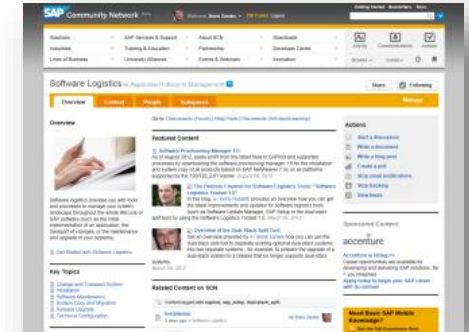
- *SAP Release Note: [SAP Note 1680045](#)*
- *[Software Provisioning Manager 1.0](#) in [SAP Community Network](#)*

For more information on system copy and migration:

- *[System Copy and Migration](#) in [SAP Community Network](#)*
- *SAP Note [1768158](#) (SAP NetWeaver 7.0x) or*
- *SAP Note [1738258](#) (SAP NetWeaver 7.1x and higher)*

For more information on **Software Logistics Toolset**:

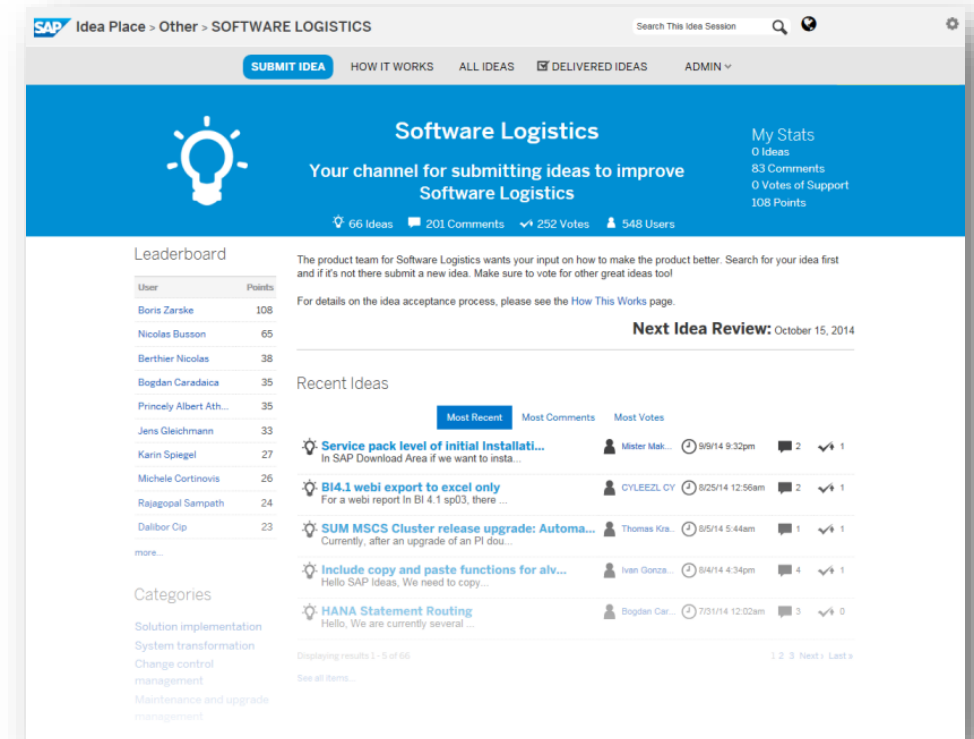
- *[Blog](#) in [SAP Community Network](#)*
- *SAP Support Portal at: <http://support.sap.com/sltoolset>*



SAP Idea Place

Influence the future of software logistics

- SAP Idea Place is your public channel to **participate in innovation** at SAP
- Enables you to **submit ideas, collaborate on and vote for ideas**, and connect with the teams that are responsible for software logistics procedures
- Complements traditional channels of interaction and feedback at SAP
- Contribute under <https://ideas.sap.com/softwarelogistics>





Thank you

Contact information:

Boris Zarske

SAP SE – Product Management for Cloud and Lifecycle Management

boris.zarske@sap.com

© 2016 SAP SE or an SAP affiliate company. All rights reserved.

No part of this publication may be reproduced or transmitted in any form or for any purpose without the express permission of SAP SE or an SAP affiliate company.

SAP and other SAP products and services mentioned herein as well as their respective logos are trademarks or registered trademarks of SAP SE (or an SAP affiliate company) in Germany and other countries. Please see <http://global12.sap.com/corporate-en/legal/copyright/index.epx> for additional trademark information and notices.

Some software products marketed by SAP SE and its distributors contain proprietary software components of other software vendors.

National product specifications may vary.

These materials are provided by SAP SE or an SAP affiliate company for informational purposes only, without representation or warranty of any kind, and SAP SE or its affiliated companies shall not be liable for errors or omissions with respect to the materials. The only warranties for SAP SE or SAP affiliate company products and services are those that are set forth in the express warranty statements accompanying such products and services, if any. Nothing herein should be construed as constituting an additional warranty.

In particular, SAP SE or its affiliated companies have no obligation to pursue any course of business outlined in this document or any related presentation, or to develop or release any functionality mentioned therein. This document, or any related presentation, and SAP SE's or its affiliated companies' strategy and possible future developments, products, and/or platform directions and functionality are all subject to change and may be changed by SAP SE or its affiliated companies at any time for any reason without notice. The information in this document is not a commitment, promise, or legal obligation to deliver any material, code, or functionality. All forward-looking statements are subject to various risks and uncertainties that could cause actual results to differ materially from expectations. Readers are cautioned not to place undue reliance on these forward-looking statements, which speak only as of their dates, and they should not be relied upon in making purchasing decisions.

© 2016 SAP SE oder ein SAP-Konzernunternehmen. Alle Rechte vorbehalten.

Weitergabe und Vervielfältigung dieser Publikation oder von Teilen daraus sind, zu welchem Zweck und in welcher Form auch immer, ohne die ausdrückliche schriftliche Genehmigung durch SAP SE oder ein SAP-Konzernunternehmen nicht gestattet.

SAP und andere in diesem Dokument erwähnte Produkte und Dienstleistungen von SAP sowie die dazugehörigen Logos sind Marken oder eingetragene Marken der SAP SE (oder von einem SAP-Konzernunternehmen) in Deutschland und verschiedenen anderen Ländern weltweit.

Weitere Hinweise und Informationen zum Markenrecht finden Sie unter <http://global.sap.com/corporate-de/legal/copyright/index.epx>.

Die von SAP SE oder deren Vertriebsfirmen angebotenen Softwareprodukte können Softwarekomponenten auch anderer Softwarehersteller enthalten.

Produkte können länderspezifische Unterschiede aufweisen.

Die vorliegenden Unterlagen werden von der SAP SE oder einem SAP-Konzernunternehmen bereitgestellt und dienen ausschließlich zu Informationszwecken.

Die SAP SE oder ihre Konzernunternehmen übernehmen keinerlei Haftung oder Gewährleistung für Fehler oder Unvollständigkeiten in dieser Publikation.

Die SAP SE oder ein SAP-Konzernunternehmen steht lediglich für Produkte und Dienstleistungen nach der Maßgabe ein, die in der Vereinbarung über die jeweiligen Produkte und Dienstleistungen ausdrücklich geregelt ist. Keine der hierin enthaltenen Informationen ist als zusätzliche Garantie zu interpretieren.

Insbesondere sind die SAP SE oder ihre Konzernunternehmen in keiner Weise verpflichtet, in dieser Publikation oder einer zugehörigen Präsentation dargestellte Geschäftsabläufe zu verfolgen oder hierin wiedergegebene Funktionen zu entwickeln oder zu veröffentlichen. Diese Publikation oder eine zugehörige Präsentation, die Strategie und etwaige künftige Entwicklungen, Produkte und/oder Plattformen der SAP SE oder ihrer Konzernunternehmen können von der SAP SE oder ihren Konzernunternehmen jederzeit und ohne Angabe von Gründen unangekündigt geändert werden.

Die in dieser Publikation enthaltenen Informationen stellen keine Zusage, kein Versprechen und keine rechtliche Verpflichtung zur Lieferung von Material, Code oder Funktionen dar. Sämtliche vorausschauenden Aussagen unterliegen unterschiedlichen Risiken und Unsicherheiten, durch die die tatsächlichen Ergebnisse von den Erwartungen abweichen können. Die vorausschauenden Aussagen geben die Sicht zu dem Zeitpunkt wieder, zu dem sie getätigt wurden. Dem Leser wird empfohlen, diesen Aussagen kein übertriebenes Vertrauen zu schenken und sich bei Kaufentscheidungen nicht auf sie zu stützen.