

APPLIES TO:

GUI FOR HTML

SUMMARY

This article explains how to Perform the GUI FOR HTML.

AUTHOR:

K.VENKATA RAMU.

COMPANY:

WILLSYS INFOSYSTEMS Pvt. Ltd.,

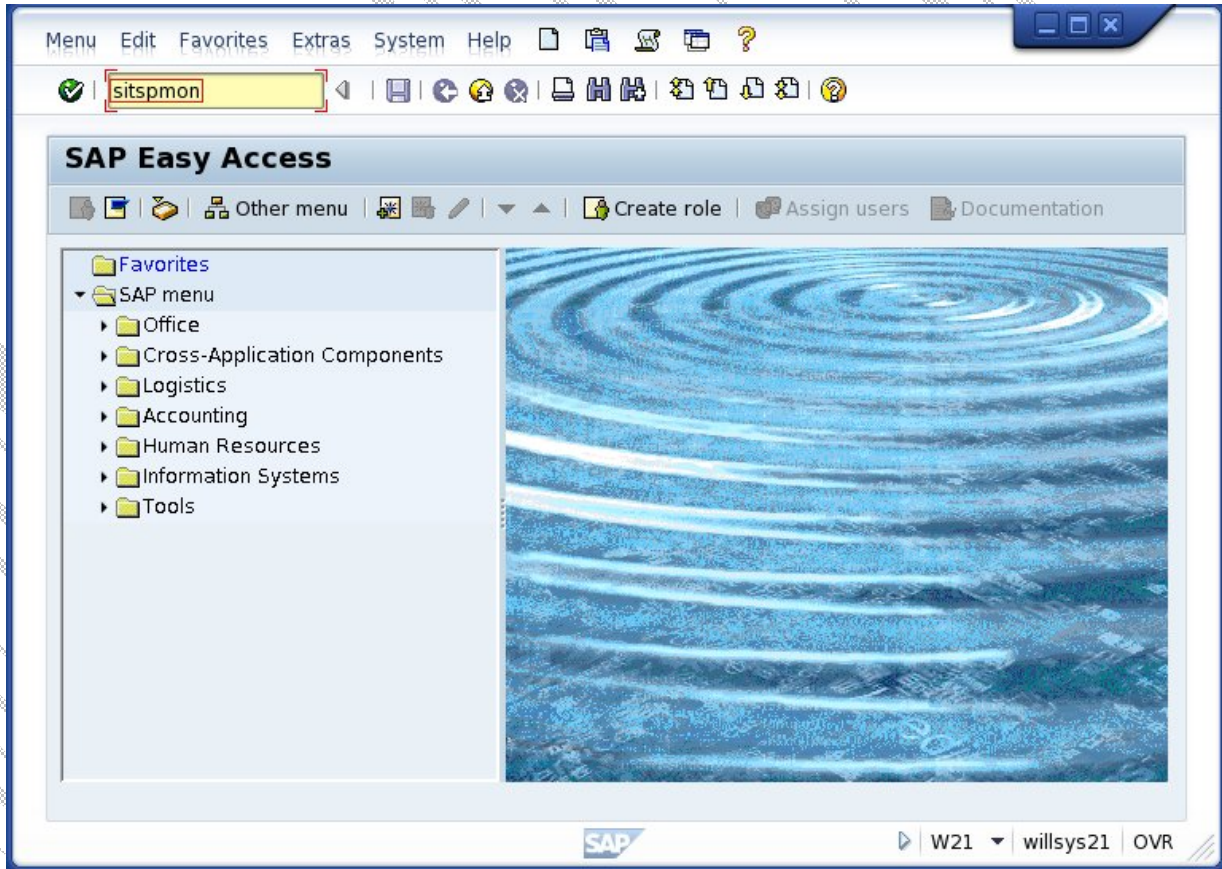
CREATED ON:

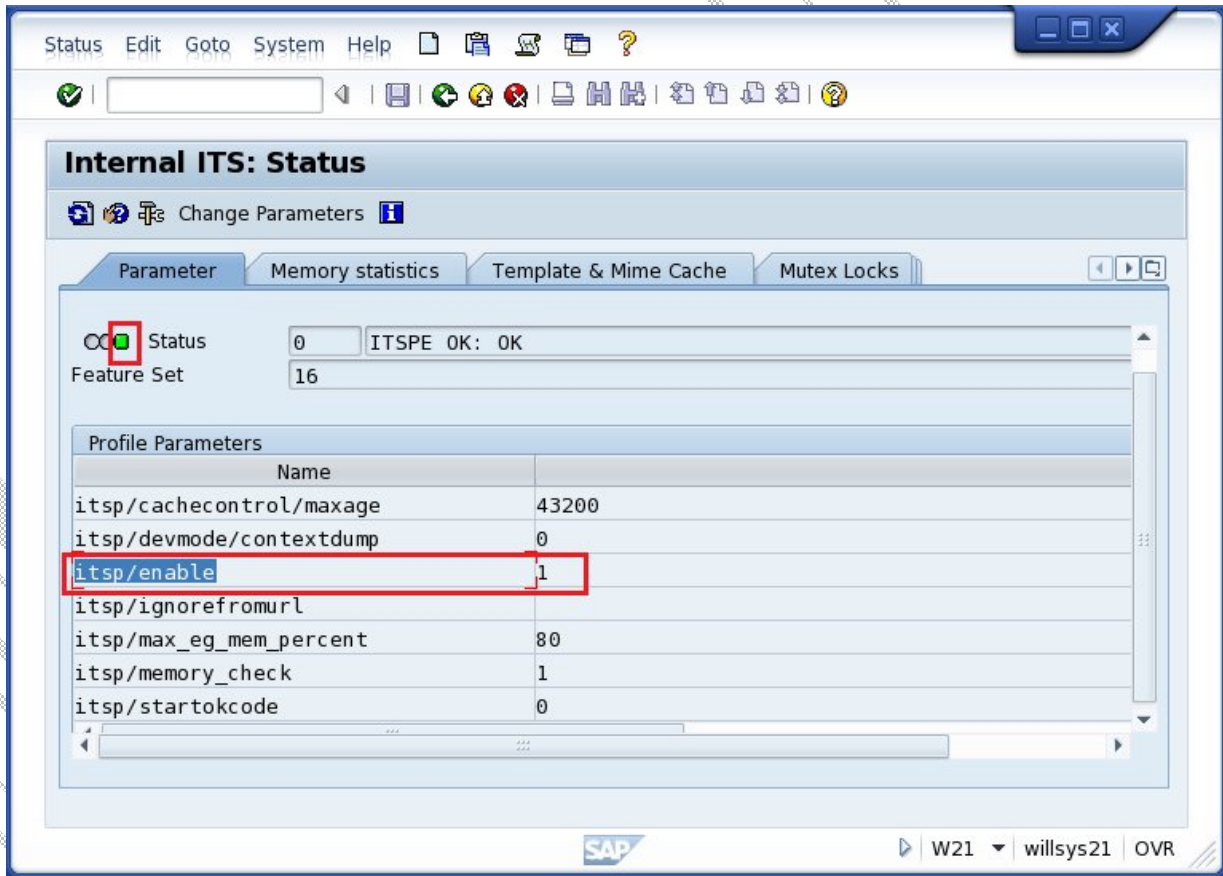
10th Feb 2015.



SAP GUI for HTML:

Goto sitspmon:





Internal ITS: Status

Change Parameters

Parameter Memory statistics Template & Mime Cache Mutex Locks

Status Status 0 ITSPE OK: OK
Feature Set 16

Profile Parameters	
Name	
itisp/cachecontrol/maxage	43200
itisp/devmode/contextdump	0
itisp/enable	1
itisp/ignorefromurl	
itisp/max_eg_mem_percent	80
itisp/memory_check	1
itisp/startokcode	0

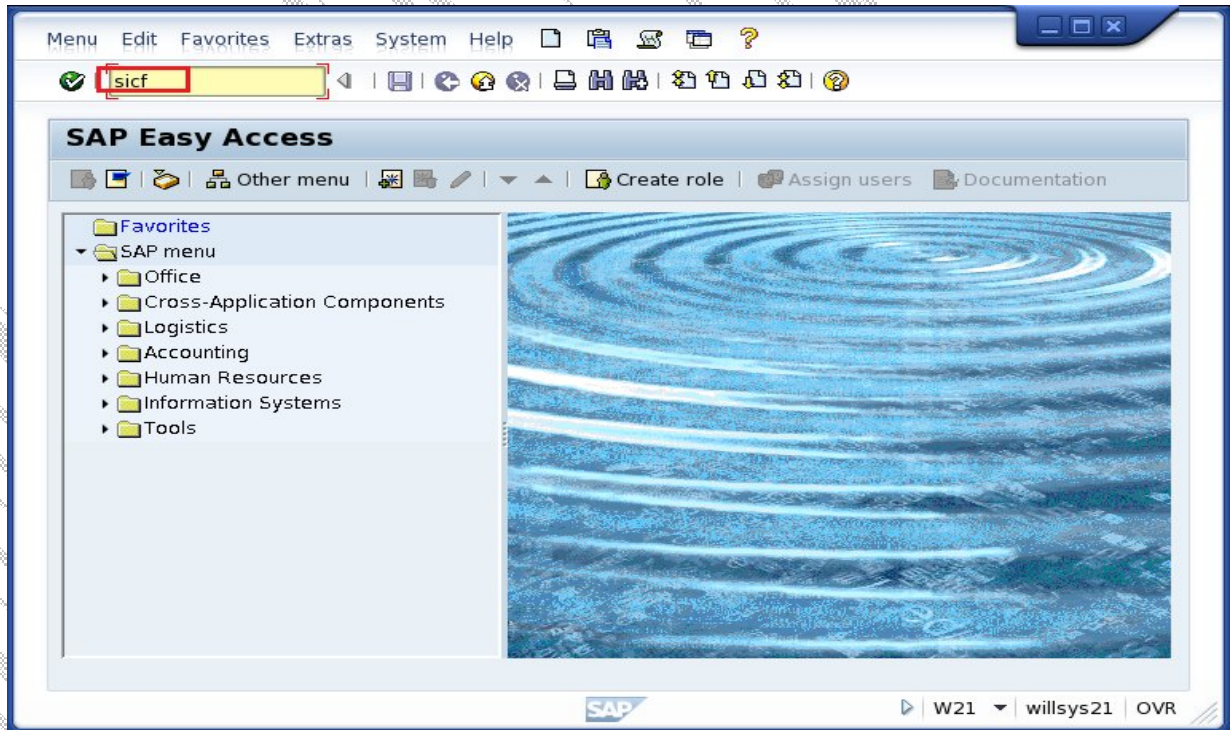
SAP W21 willsys21 OVR

Goto SICF

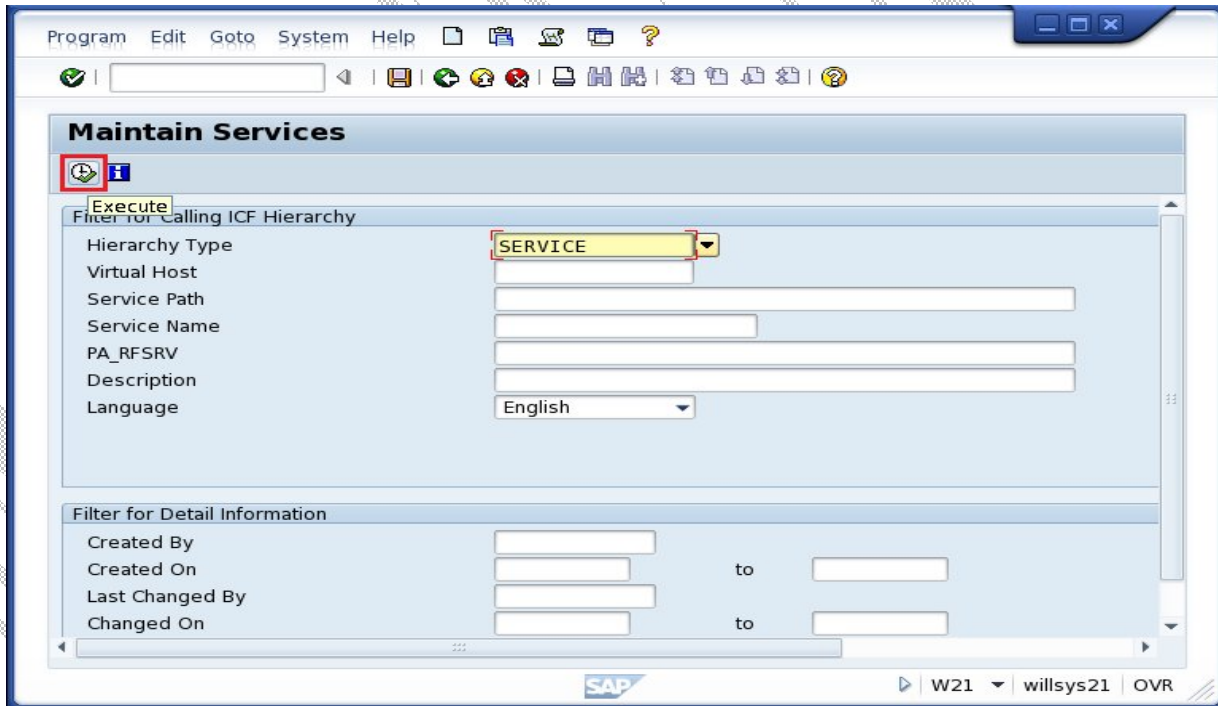
SAP-GUI FOR HTML

Confidential Document

Select Hierarchy type "SERVICE".

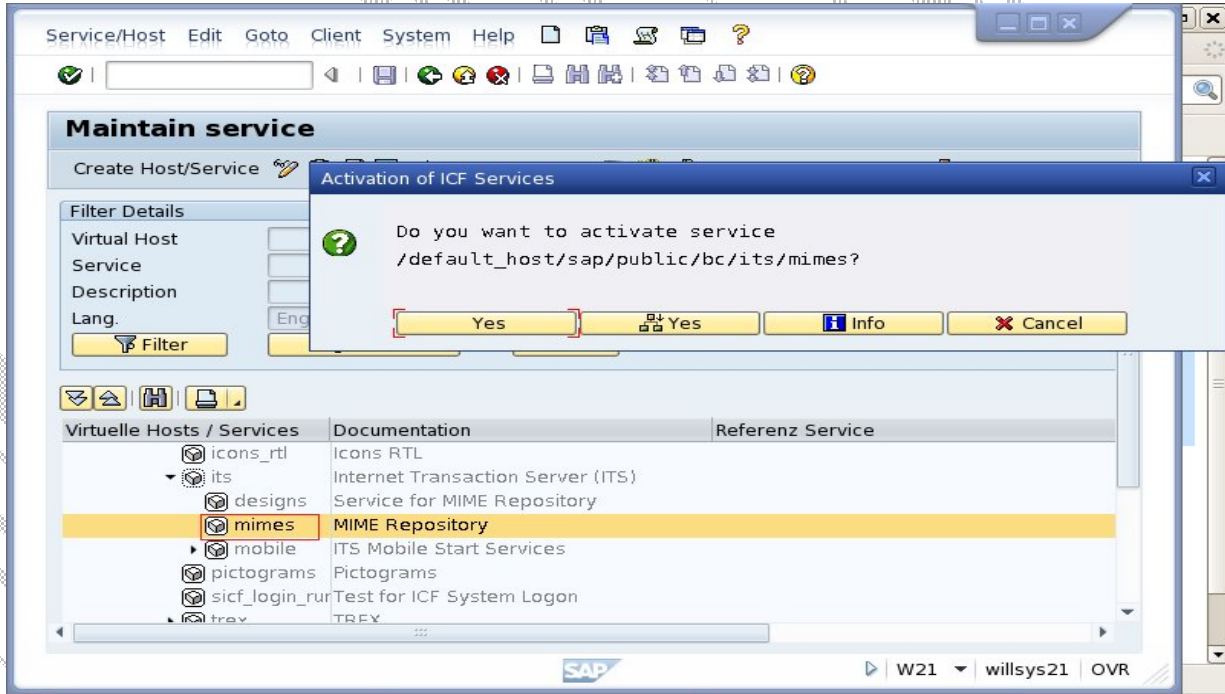


Click on **Execute** button

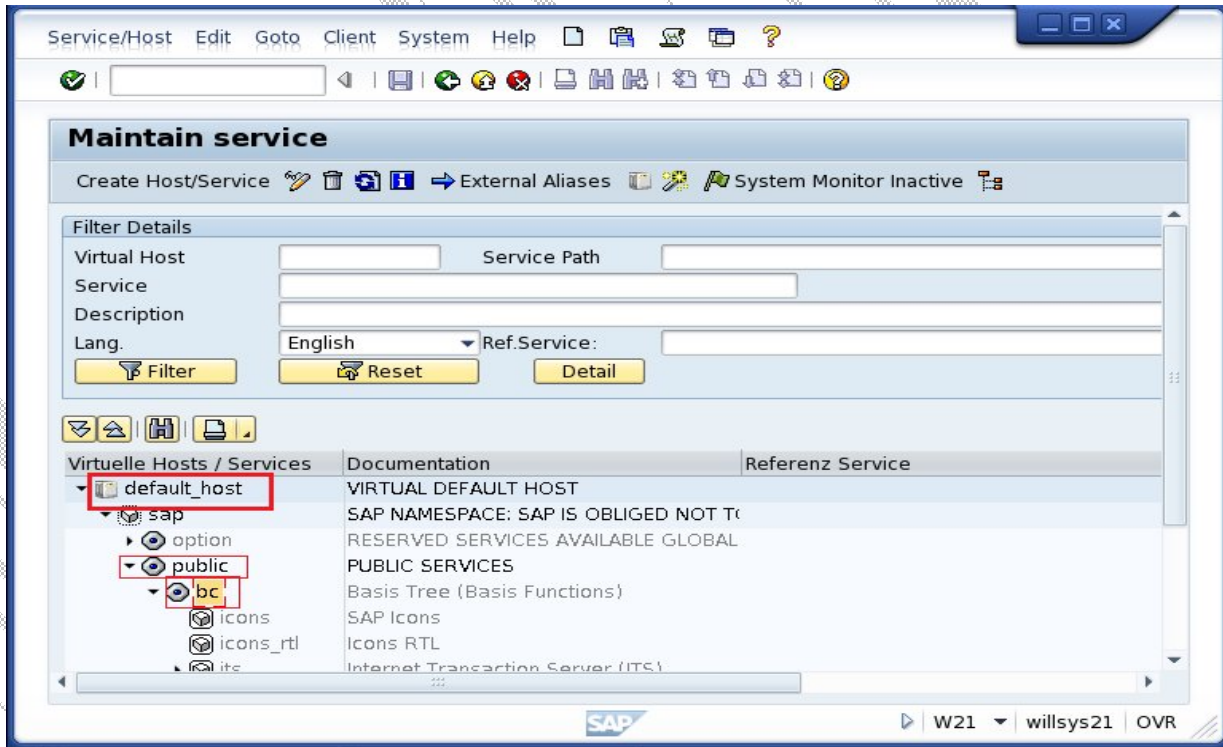


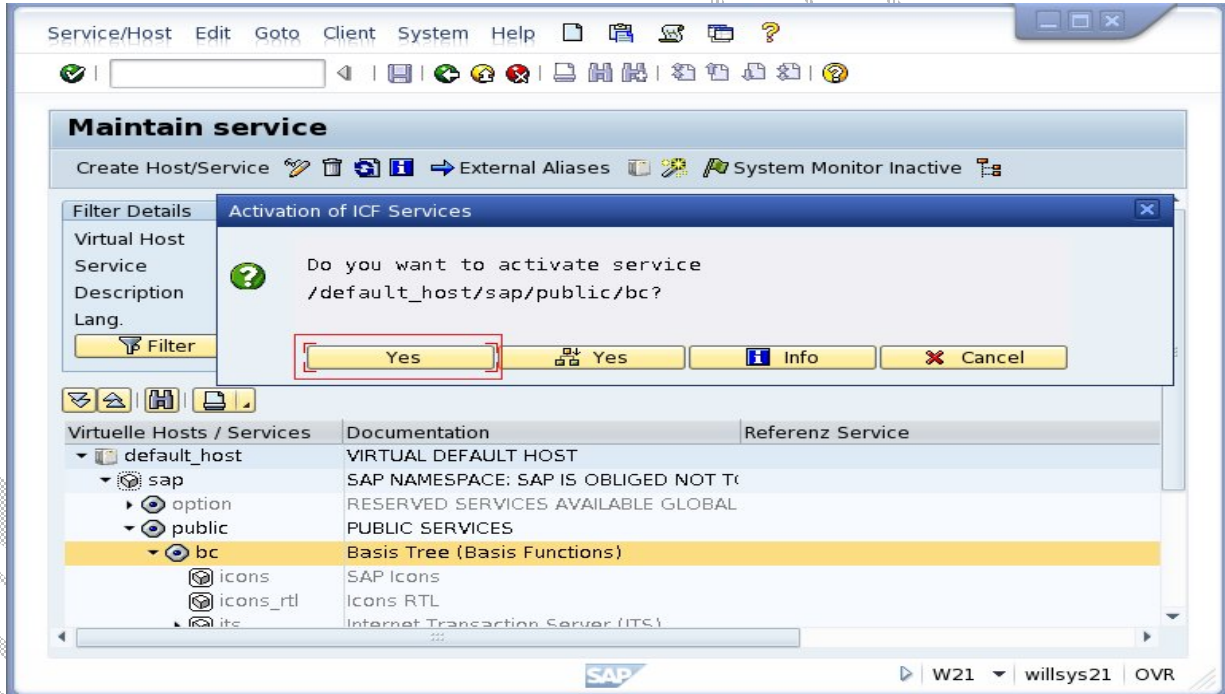
Click on default host
sap/public/bc/its/mimes

right click
activate



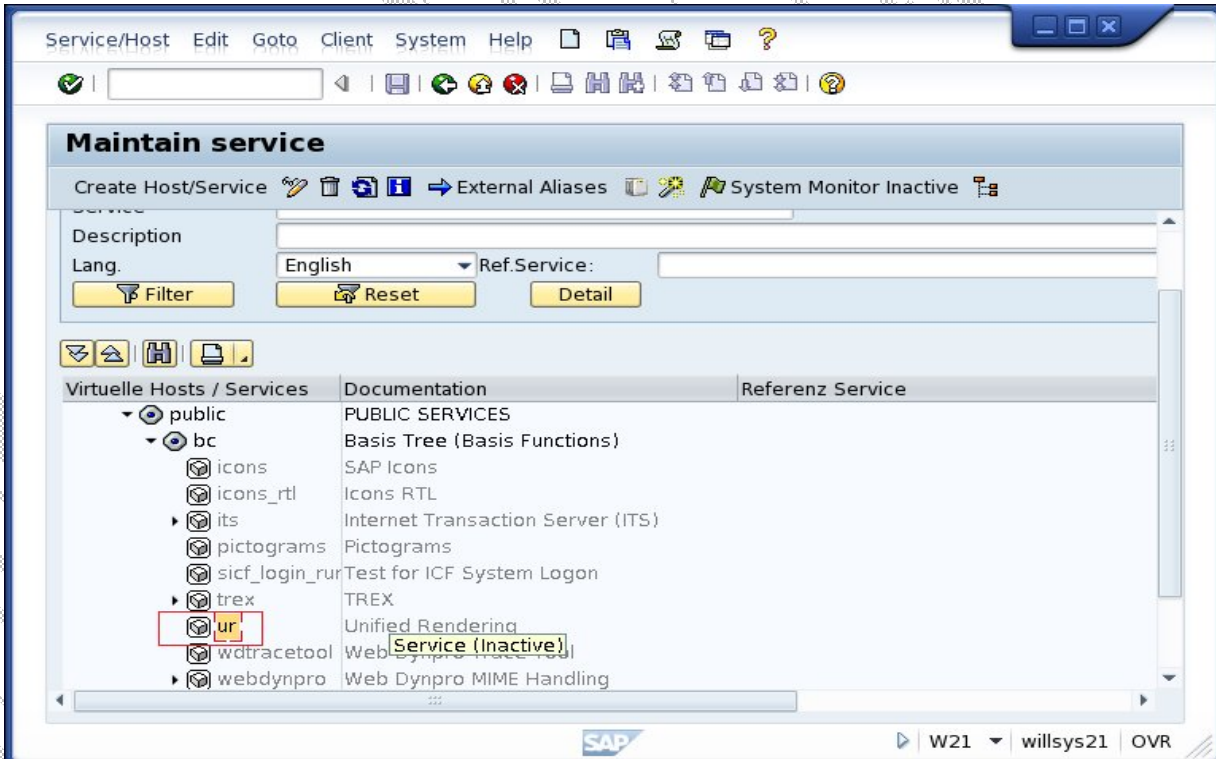
Click on **default_host**
sap/public/bc
right click



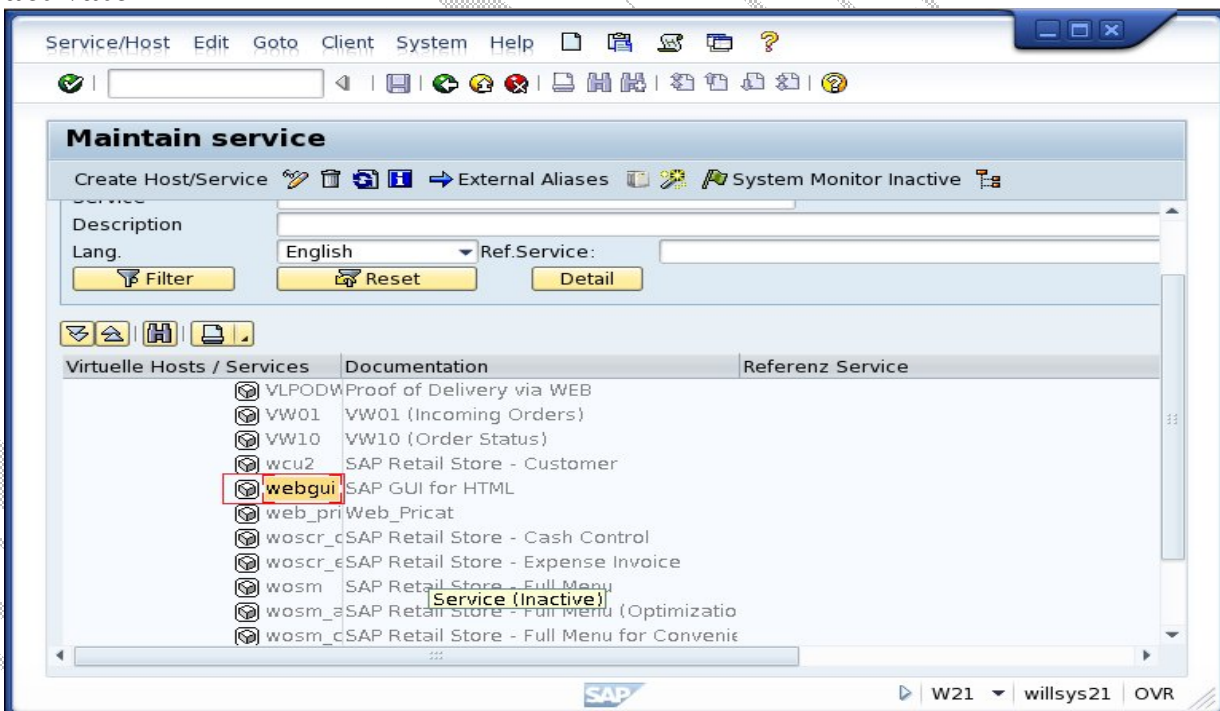


sap/public/bc/ur

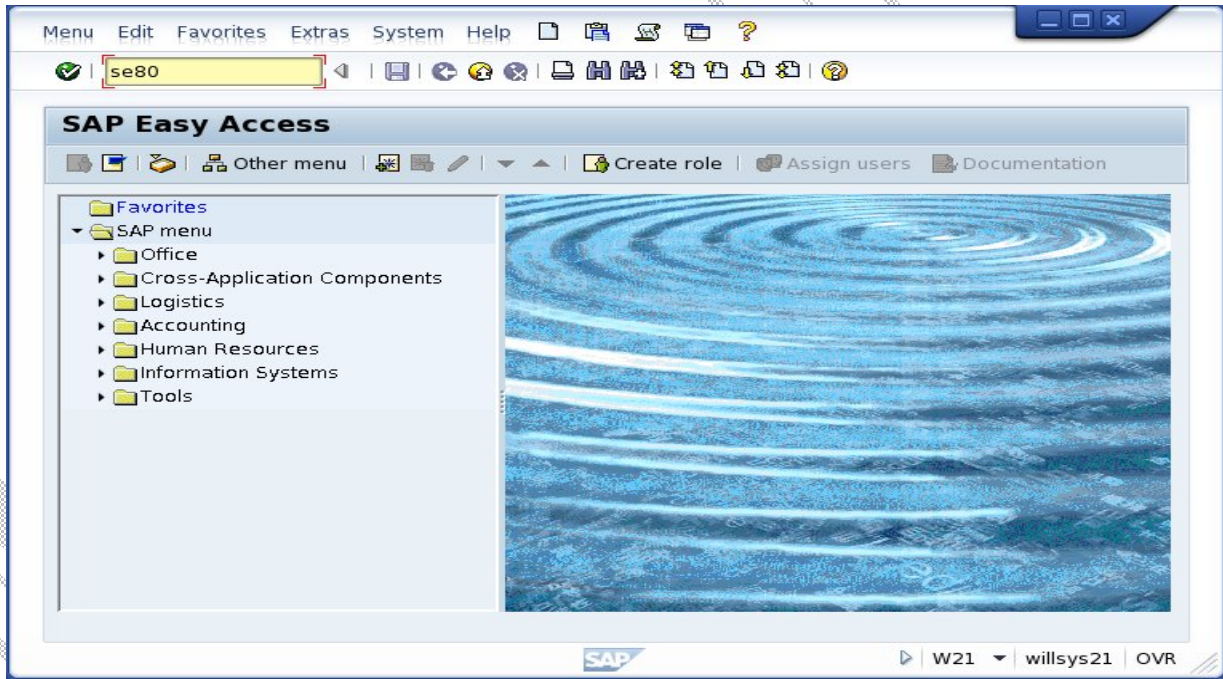
right click
activate



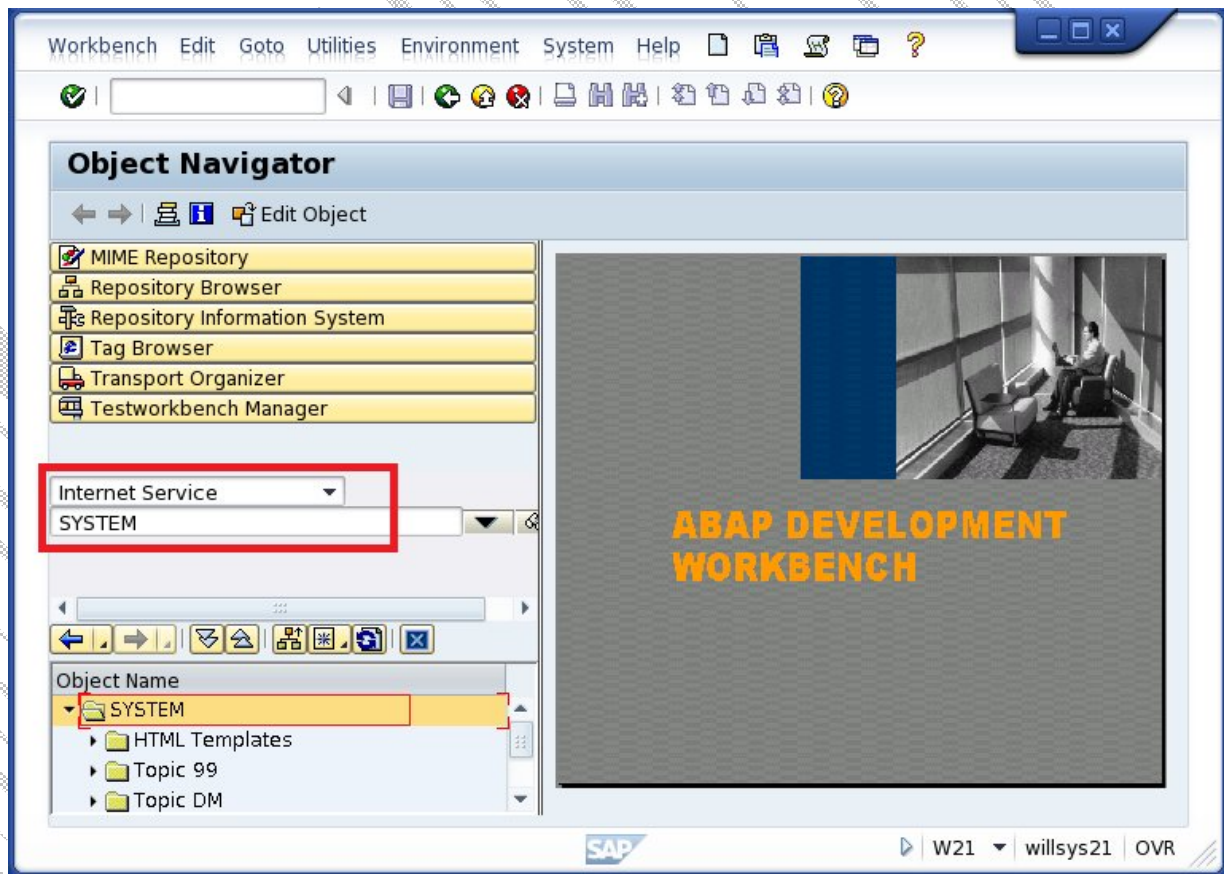
sap/bc/gui/sap/its/web gui
right click



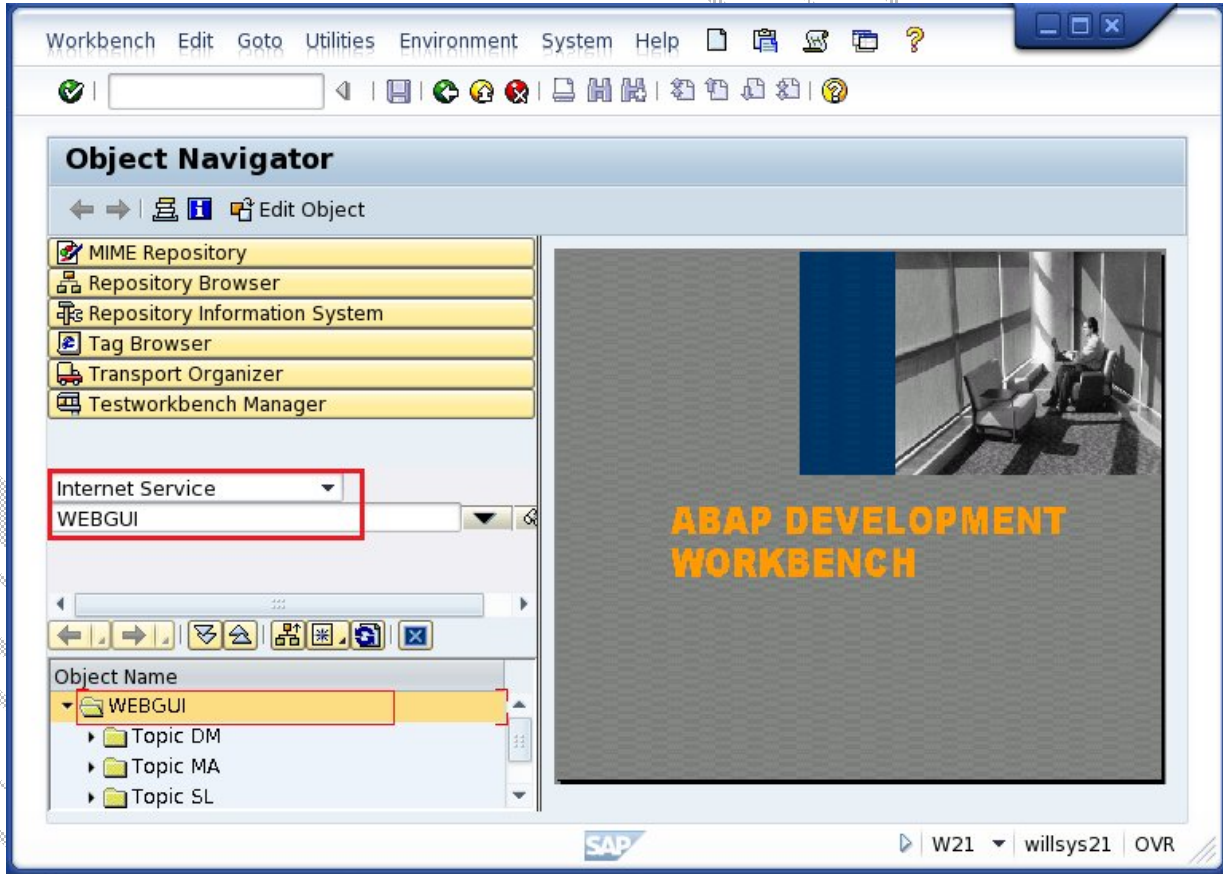
Execute **SE80** to publish the services



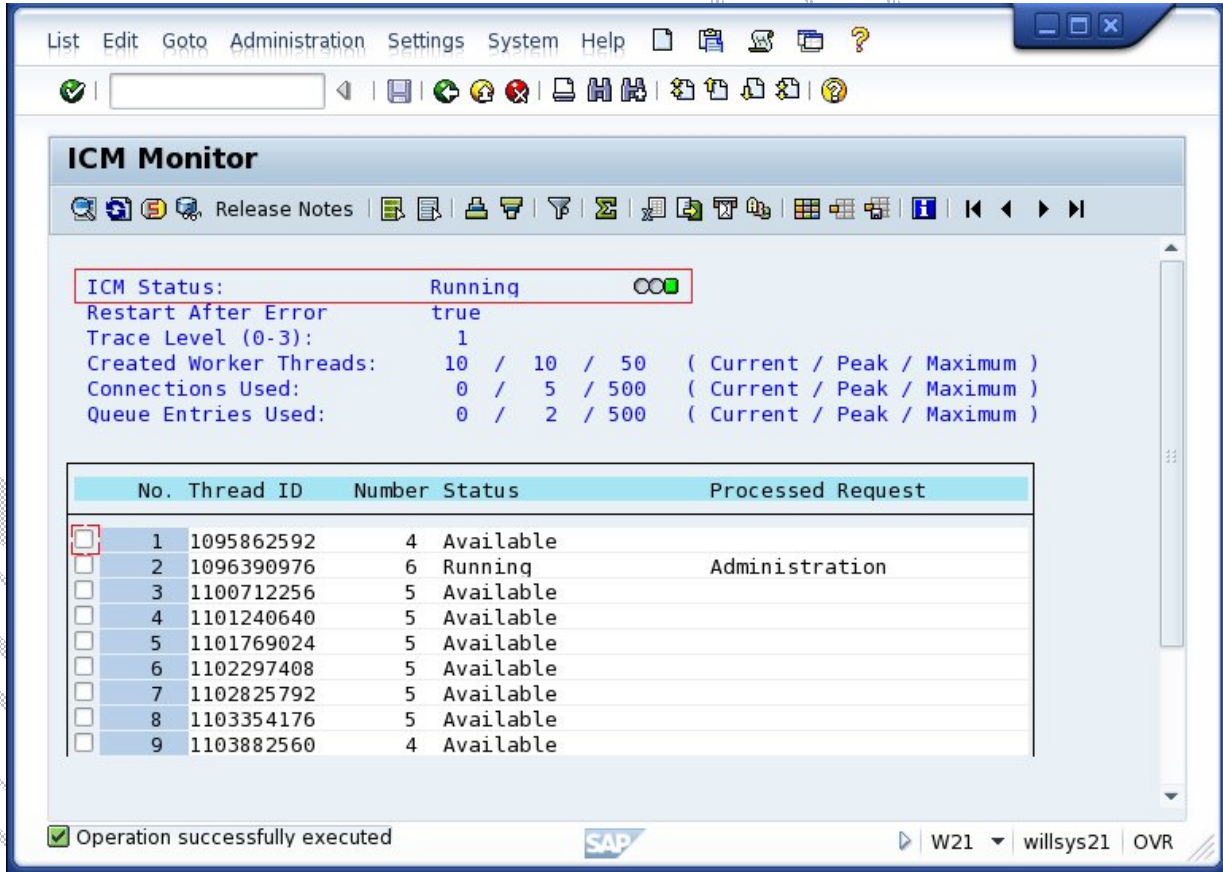
Select internet service
select system
right click



Select **internet service**
select **WEBGUI**
right click
Publish complete service



→ICM: 1



The screenshot shows the SAP GUI interface for the ICM Monitor. The main window title is "ICM Monitor". Below the title bar, there is a toolbar with various icons. The main content area displays the following information:

ICM Status: Running ●●●

Restart After Error: true

Trace Level (0-3): 1

Created Worker Threads: 10 / 10 / 50 (Current / Peak / Maximum)

Connections Used: 0 / 5 / 500 (Current / Peak / Maximum)

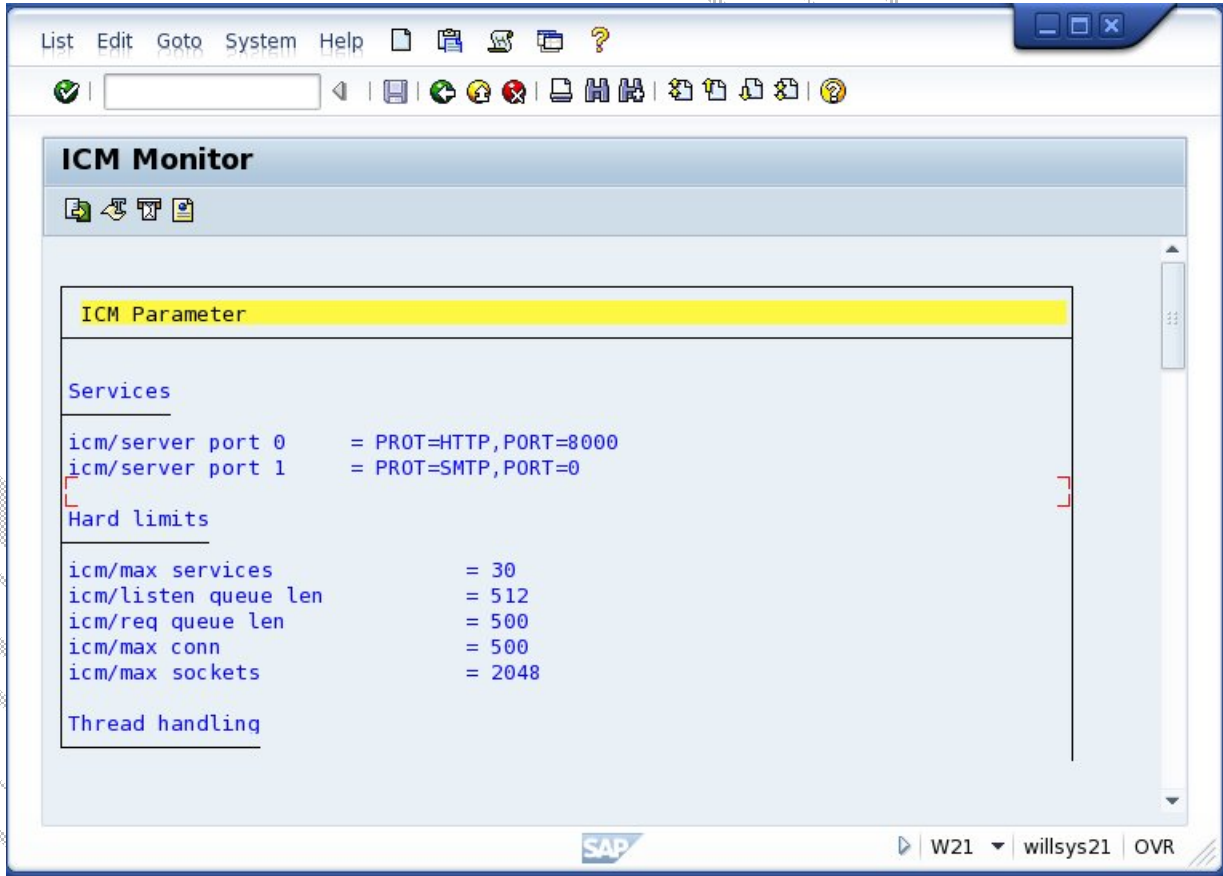
Queue Entries Used: 0 / 2 / 500 (Current / Peak / Maximum)

Below this information is a table with the following columns: No., Thread ID, Number, Status, and Processed Request.

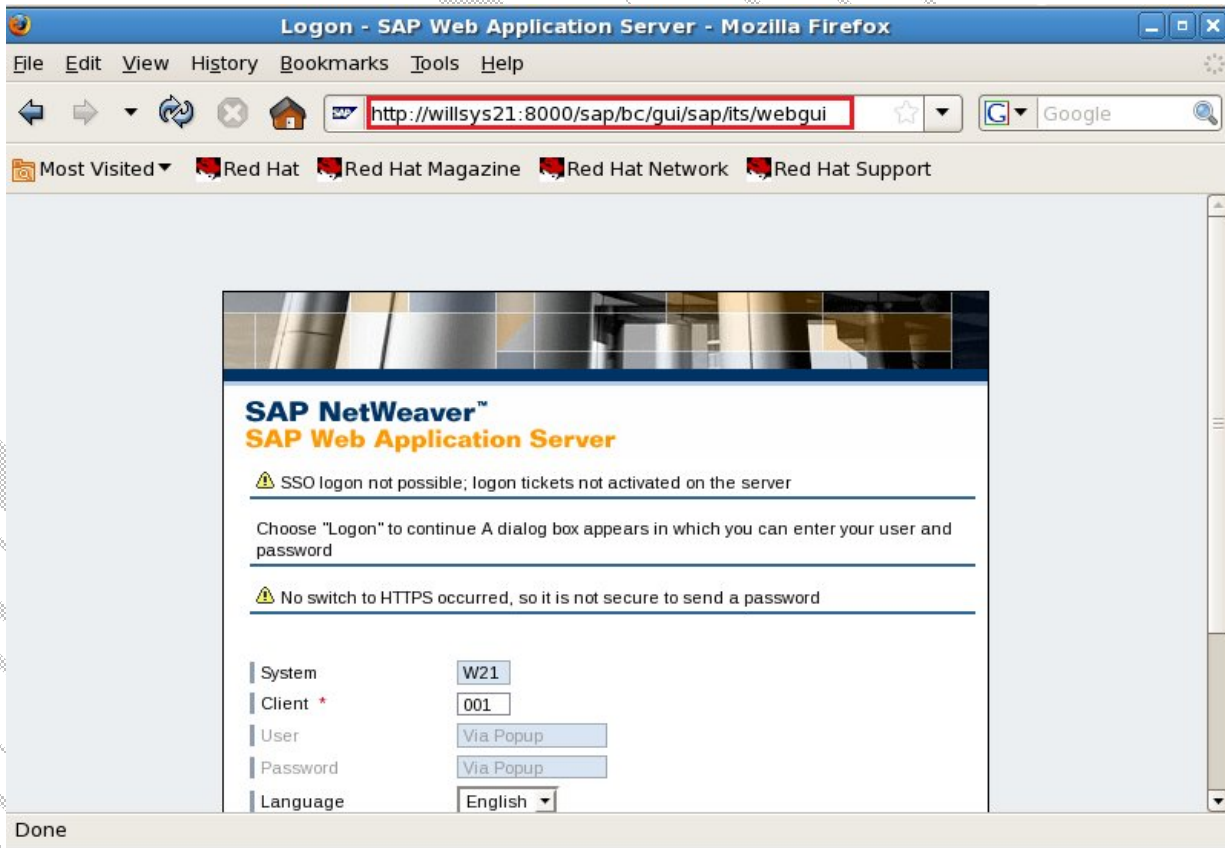
No.	Thread ID	Number	Status	Processed Request
<input checked="" type="checkbox"/>	1 1095862592	4	Available	
<input type="checkbox"/>	2 1096390976	6	Running	Administration
<input type="checkbox"/>	3 1100712256	5	Available	
<input type="checkbox"/>	4 1101240640	5	Available	
<input type="checkbox"/>	5 1101769024	5	Available	
<input type="checkbox"/>	6 1102297408	5	Available	
<input type="checkbox"/>	7 1102825792	5	Available	
<input type="checkbox"/>	8 1103354176	5	Available	
<input type="checkbox"/>	9 1103882560	4	Available	

At the bottom of the window, a status bar shows "Operation successfully executed" with a green checkmark icon. The SAP logo is visible in the center, and the user information "W21 | willsys21 | OVR" is on the right.

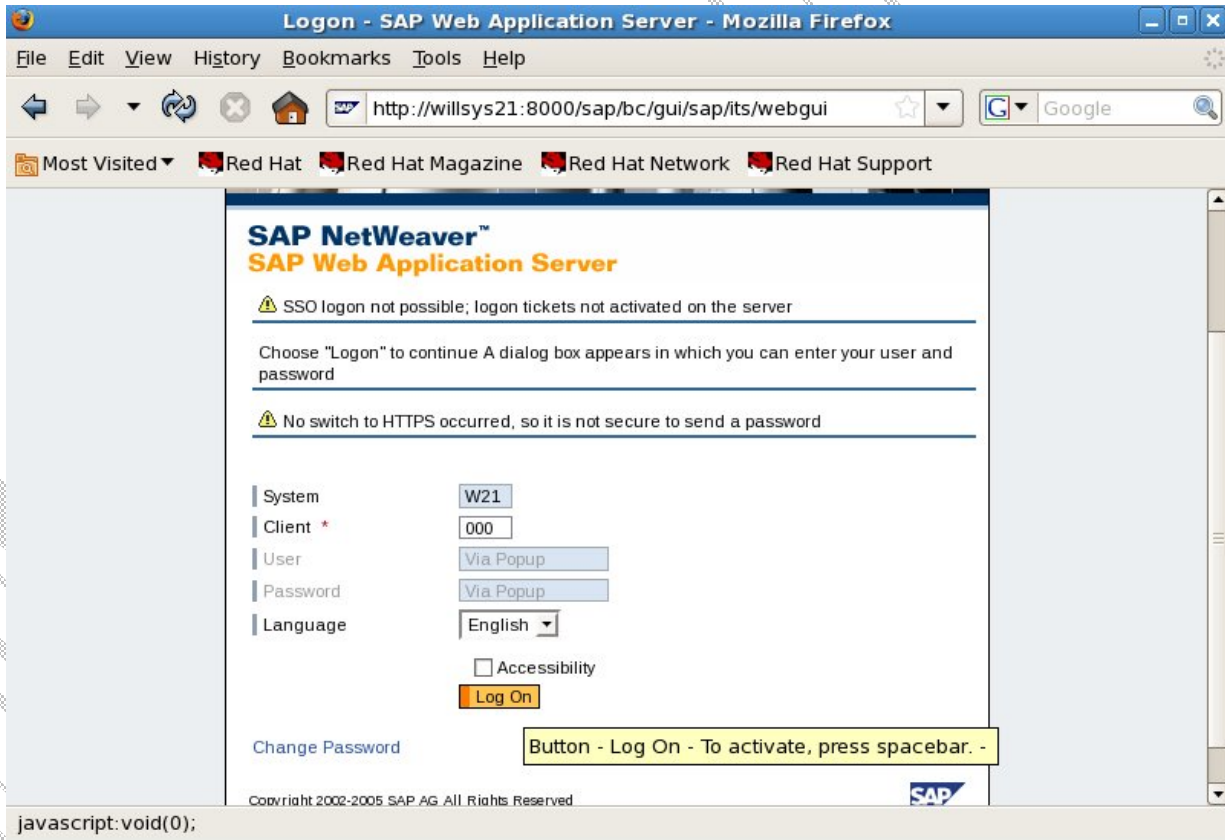
These are displayed in SMICM



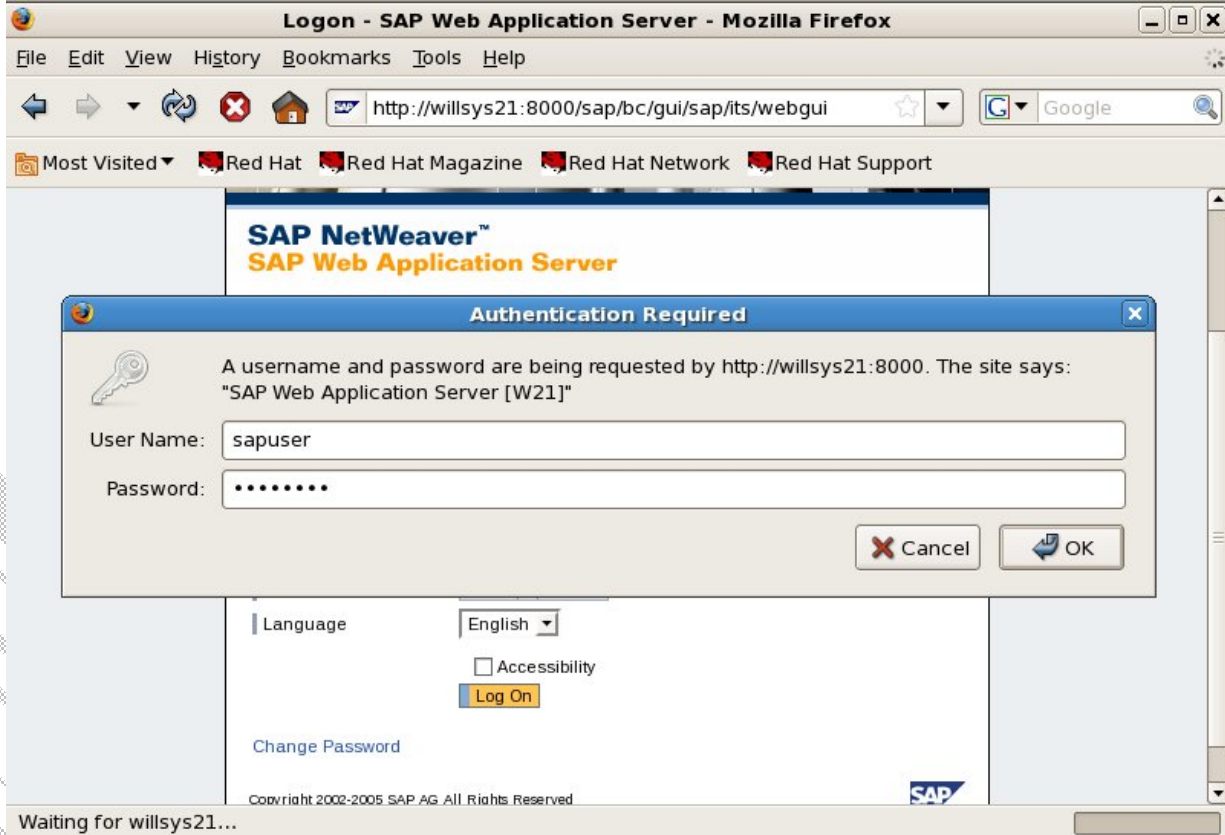
Enter **URL** in browser

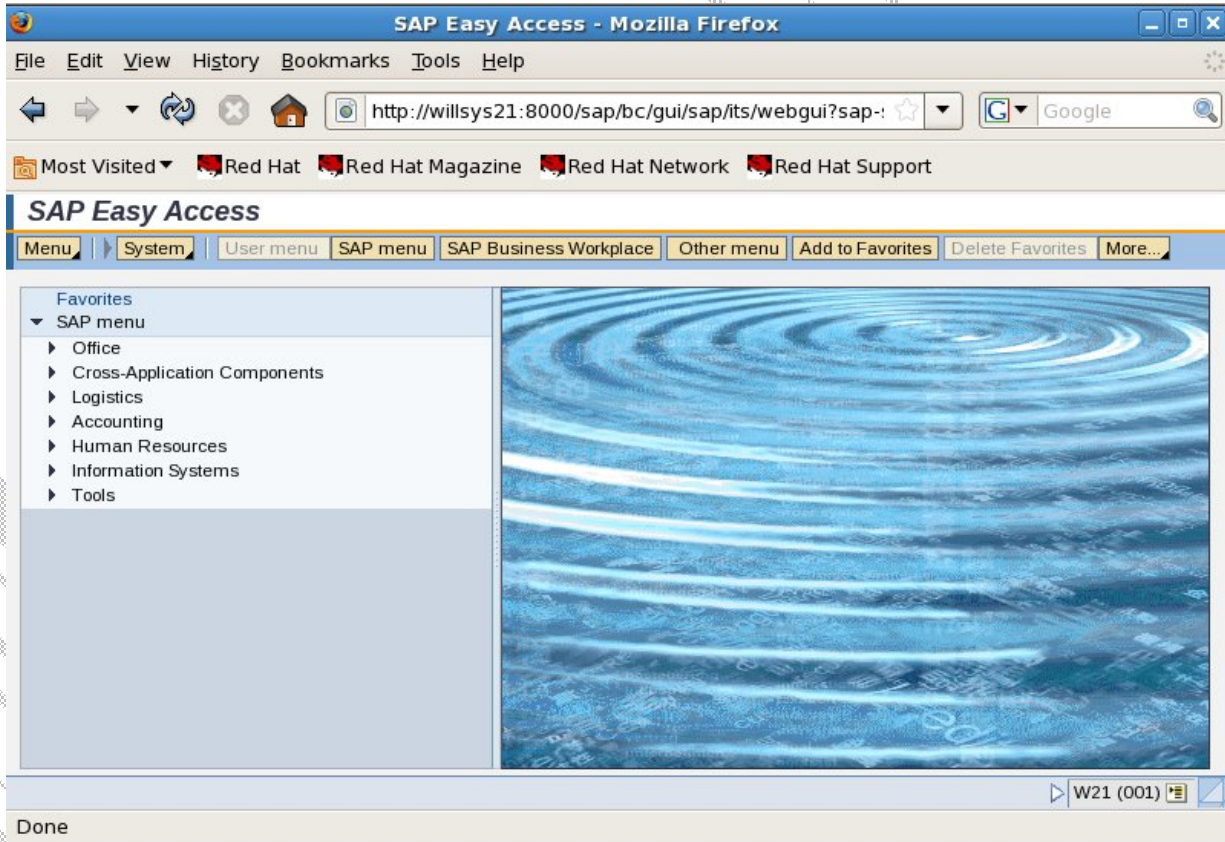


Enter **SID** , **Client**, **Language** and Click on “**Logon**”



Enter **User name, Password**
click on **“OK”**





completed sap gui for html.

Related Content:

<http://service.sap.com>

<http://support.sap.com>

www.help.sap.com

www.sdn.sap.com/irj/sdn/index

Disclaimer and Liability Notice:

WILLSYS will not be held liable for any damages caused by using or misusing the information, code or methods suggested in this document, and anyone using these methods does so at his/her own risk.

WILLSYS offers no guarantees and assumes no responsibility or liability of any type with respect to the content of this technical article or code sample, including any liability resulting from incompatibility between the content within this document and the materials and services offered by WILLSYS. You agree that you will not hold, or seek to hold, WILLSYS responsible or liable with respect to the content of this document.