
Introduction – User Manual

New Device Type Wizard



Version:

2013-09-18

© 2013 by SAP AG.

All rights reserved. SAP, R/3, SAP NetWeaver, Duet, PartnerEdge, ByDesign, SAP Business ByDesign, and other SAP products and services mentioned herein as well as their respective logos are trademarks or registered trademarks of SAP AG in Germany and other countries.

Business Objects and the Business Objects logo, BusinessObjects, Crystal Reports, Crystal Decisions, Web Intelligence, Xcelsius, and other Business Objects products and services mentioned herein as well as their respective logos are trademarks or registered trademarks of Business Objects S.A. in the United States and in other countries. Business Objects is an SAP company.

All other product and service names mentioned are the trademarks of their respective companies. Data contained in this document serves informational purposes only. National product specifications may vary.

These materials are subject to change without notice. These materials are provided by SAP AG and its affiliated companies ("SAP Group") for informational purposes only, without representation or warranty of any kind, and SAP Group shall not be liable for errors or omissions with respect to the materials. The only warranties for SAP Group products and services are those that are set forth in the express warranty statements accompanying such products and services, if any. Nothing herein should be construed as constituting an additional warranty.

Table of Content

1.	Introduction	3
2.	Operation Guide	4
3.	How to Use the Old Device Type Wizard	13
4.	Updating Information Database Tables on Your System	14
5.	Install a Device Type	17
6.	Reference SAP Notes	18

1. Introduction

When you create an output device in transaction SPAD, you have to specify an appropriate device type. However, finding an appropriate device type is not always easy.

To solve this problem the Device Type Wizard had been introduced with NetWeaver 6.20. The Device Type Wizard recommends an appropriate device type based on the printer model and the language to be printed.

Together with the Unicode Printing Enhancement (UPE) solution a new enhanced Device Type Wizard has been developed. In addition to an improved usability, the new Device Type Wizard has been extended with several new features.

The new Device Type Wizard is available in Unicode-systems¹ with the following SAP NetWeaver Basis releases:

- 702 SP14 and higher
- 730 SP10 and higher
- 731 SP09 and higher
- 740 SP03 and higher

In Non-Unicode systems and systems which have not imported the above mentioned support packages the old Device Type Wizard is still active. For a detailed operation guide about the old Device Type Wizard see the attachment `selectdevtype_wizard_old.pdf` in note 1036961.

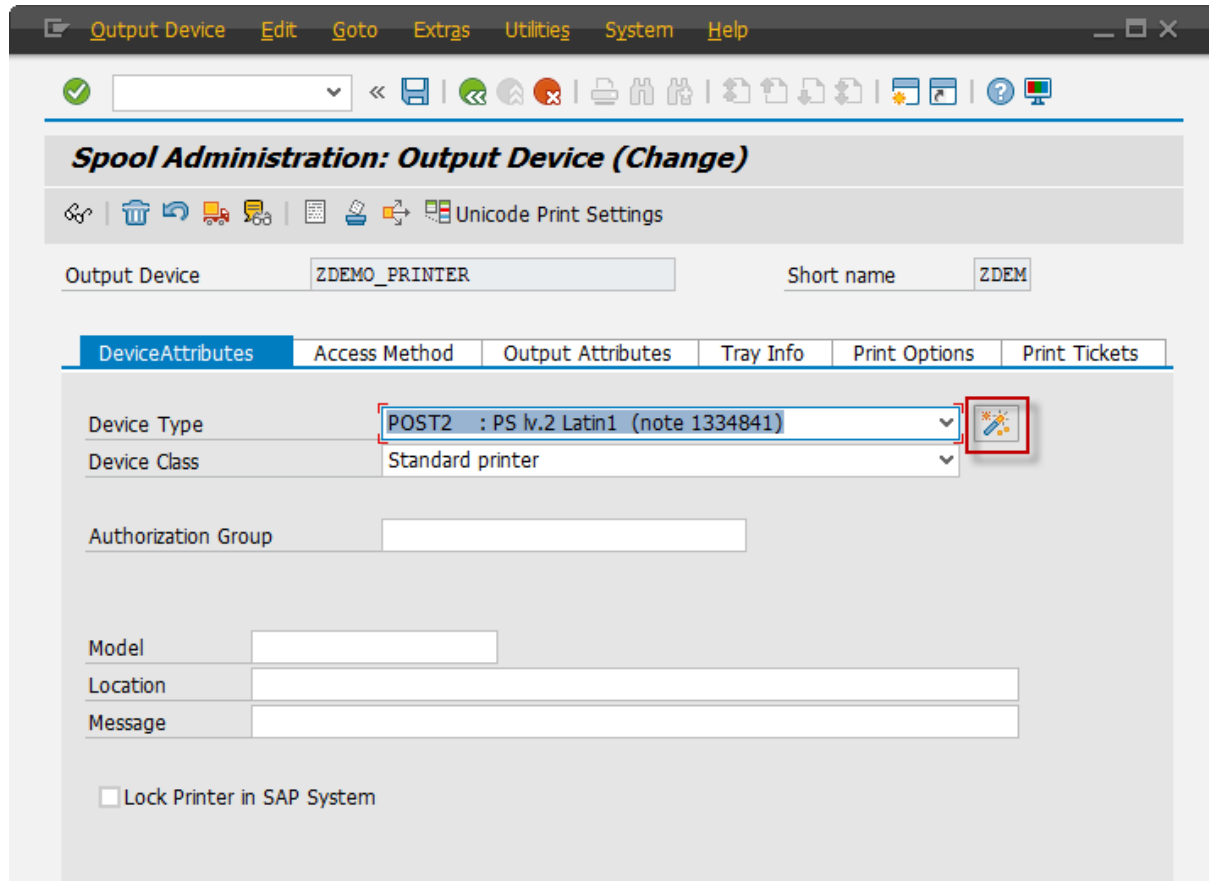
Remark

The following screenshots were taken on a 7.40 system. Although they may look different in older releases, the basic functionality is the same.

¹ The new Device Type Wizard is not available in Non-Unicode-systems.

2. Operation Guide

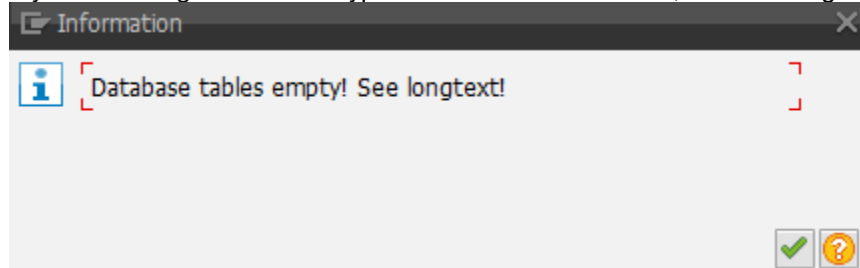
Note: If you still want to use the old Device Type Wizard, see chapter 3.



To start the wizard, click on the “wizard-button” in transaction SPAD.

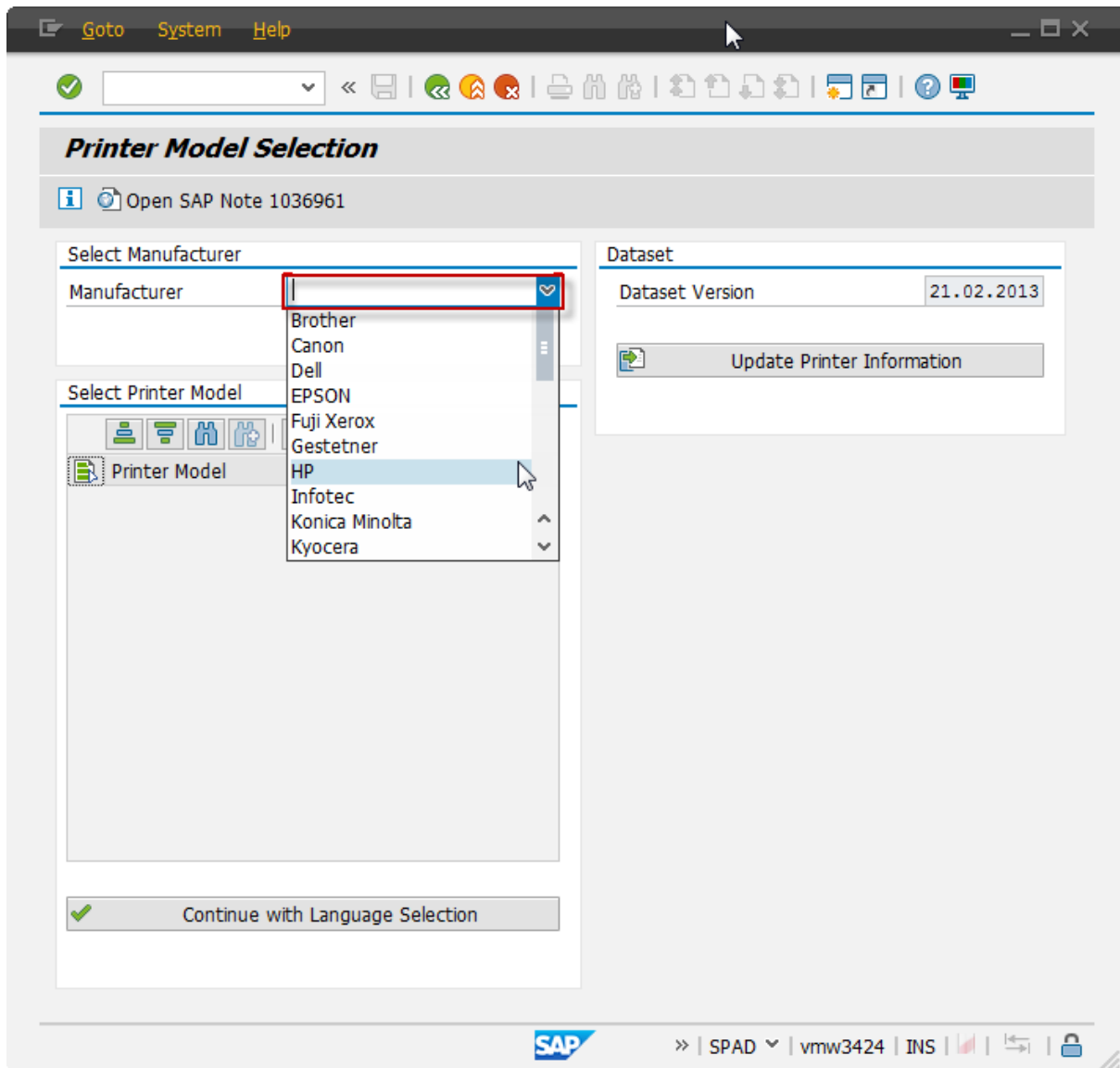
Remark

If you are using the Device Type Wizard for the first time, the following message will be shown:

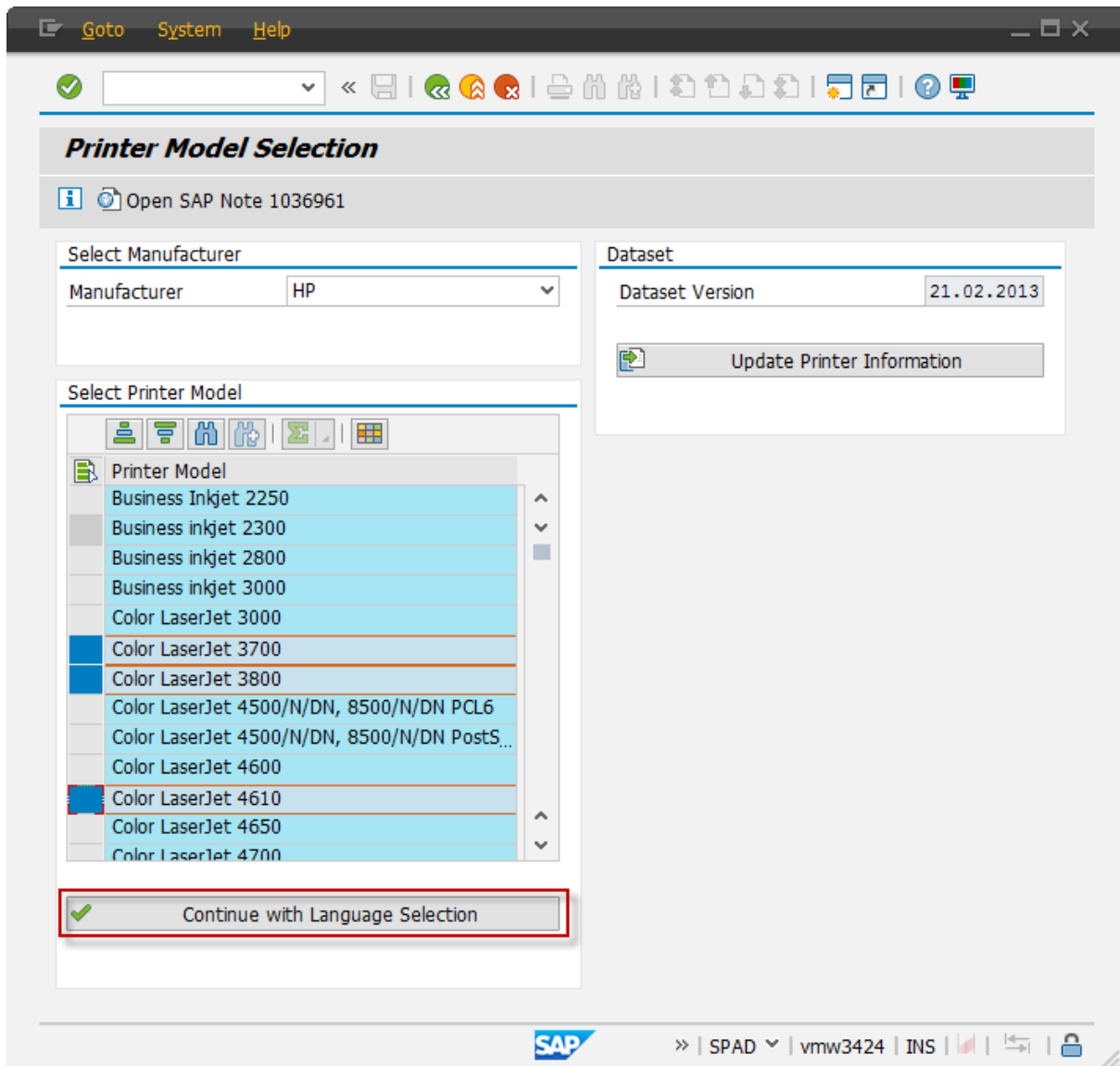


The database tables which store information about printer models and device types are empty and have to be filled before the wizard can be used. Please follow the instructions described in the longtext of this message. For further information see chapter 4.

After you have clicked on this button, the Device Type Wizard is opened.
(If your system is a Non-Unicode system, the old Device Type Wizard will be opened.)

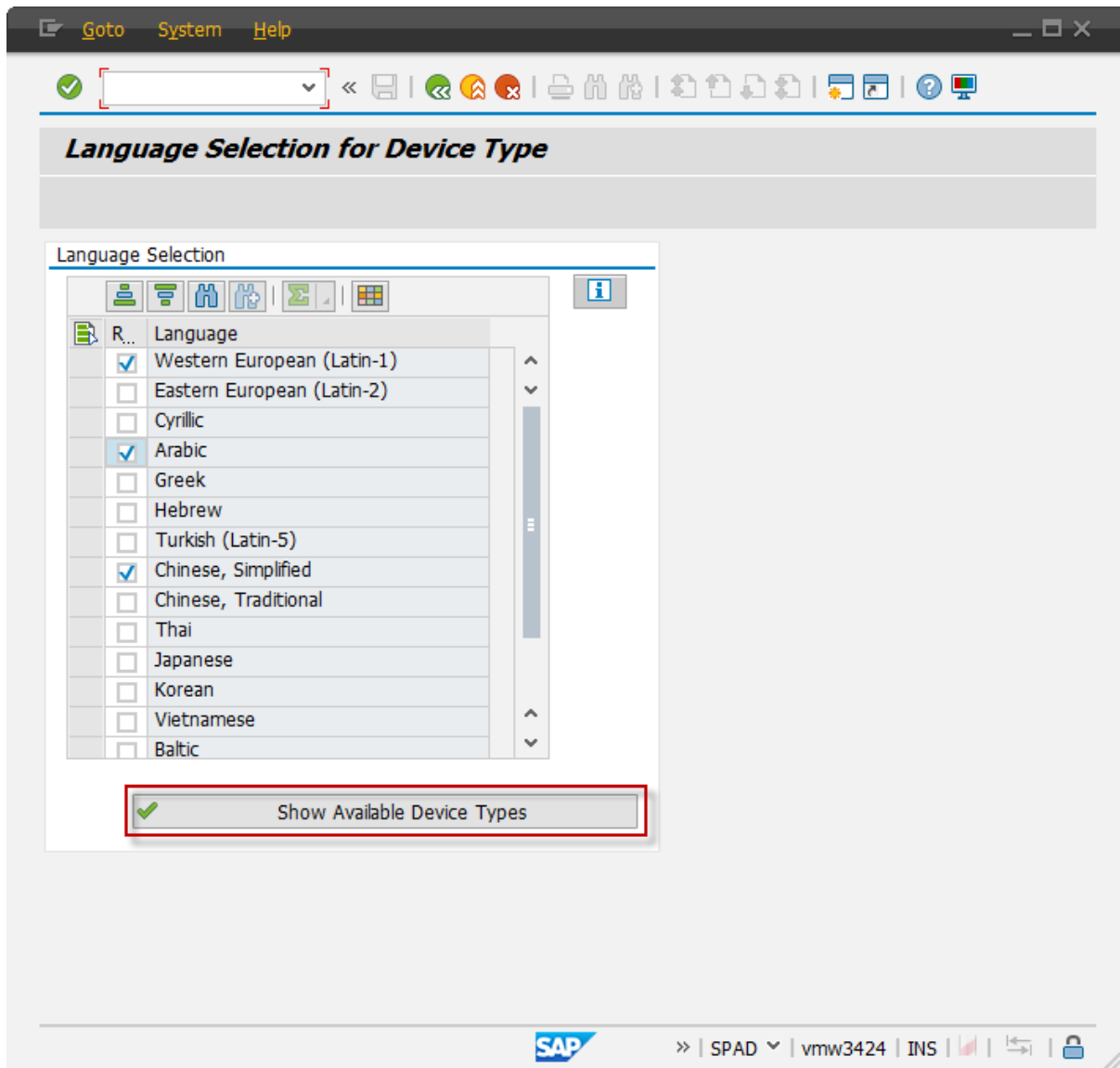


On the first screen select a printer manufacturer from the drop-down list. After a manufacturer has been selected, a table containing printer models of the selected manufacturer is shown. In this table you are able to select one, multiple or all printer models.



Select the printer model(s) for which you want to see recommended device types and click on “*Continue with Language Selection*”.

On the next screen you have to select the languages/language groups/scripts which you want to print.



Check the boxes next to the languages you want to print and click on "Show Available Device Types". For example, if the output device shall be used for printing German, Polish and Russian, you need to select the language groups "Western European" and "Eastern European", and the script "Cyrillic".

Recommendation: Choose only languages which you are really going to print. If you select many languages, but later you only print documents in for example English and Chinese, maybe not the best option will be suggested².

After that the recommendations are calculated and shown on the next screen in a table.

² In the worst case there is no device type which can be used to print all your selected languages with the selected printer model. Also an option may be recommended which requires a lot of additional configuration afford or a solution is suggested which creates printouts of poor quality.

Goto System Help

Device Type Selection

Open SAP Note 1036961 Install Device Types

List of Suitable Device Types

Printer Model	Device Type
Color LaserJet 3700	HP3700 + Unicode Support (UPE)
Color LaserJet 3800	HP3800 + Unicode Support (UPE)
Color LaserJet 4610	HP4610 + Unicode Support (UPE)

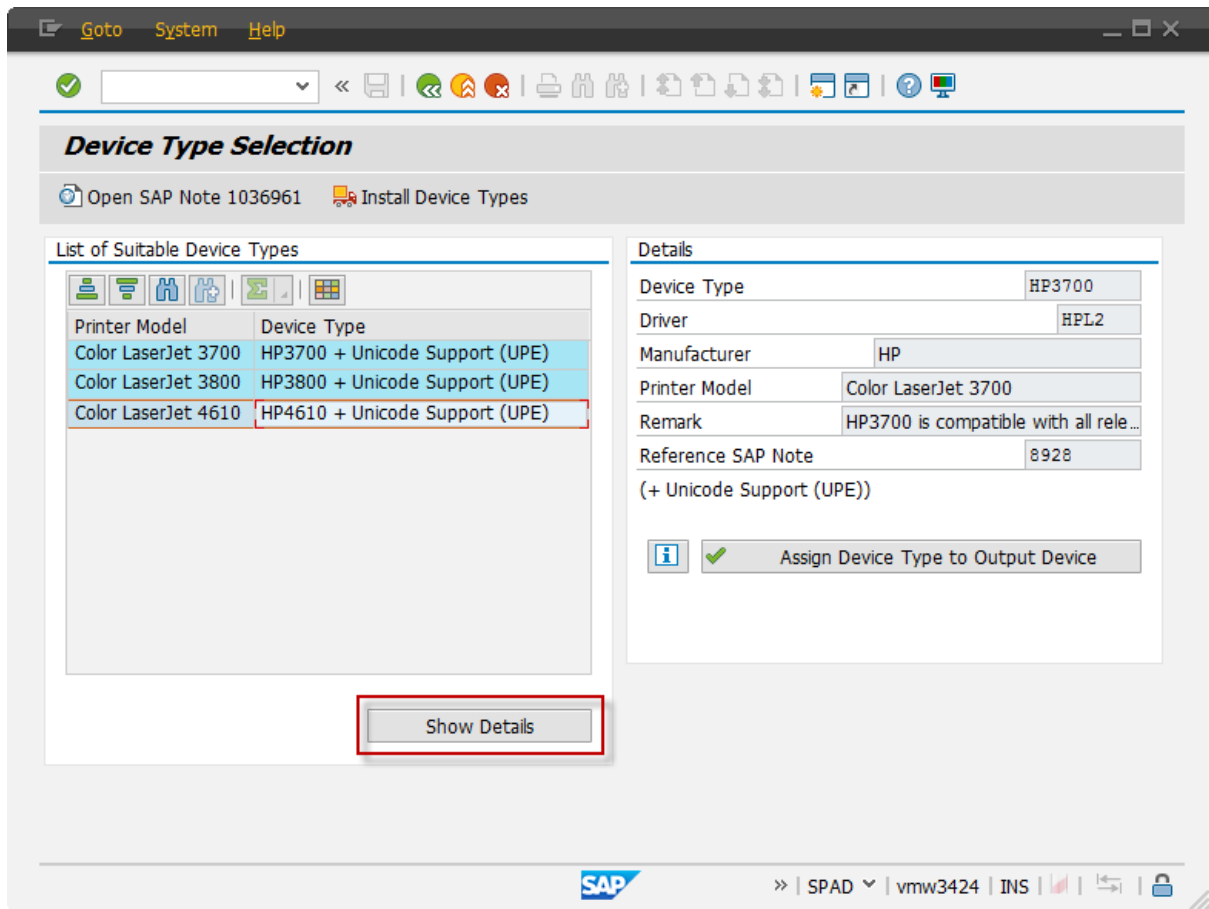
Show Details

Details

Device Type: HP3700
Driver: HPL2
Manufacturer: HP
Printer Model: Color LaserJet 3700
Remark: HP3700 is compatible with all rele...
Reference SAP Note: 8928
(+ Unicode Support (UPE))

Assign Device Type to Output Device

SAP >> | SPAD | vmw3424 | INS |



Now double click on a row, or select a row and click on “*Show Details*”.

Thereby details about the currently selected device type are shown on the right side.

(+ Unicode Support (UPE))

If this comment is shown, the device type is not able to print the selected language(s) by itself. Instead documents have to be printed with the Unicode Printing Enhancement (UPE) solution. To use the UPE solution a so-called Unicode Reference Device Type (URDT) has to be assigned to the output device in addition to a “usual” device type. This is done automatically by the wizard. For more information about UPE see note [1812076](#).

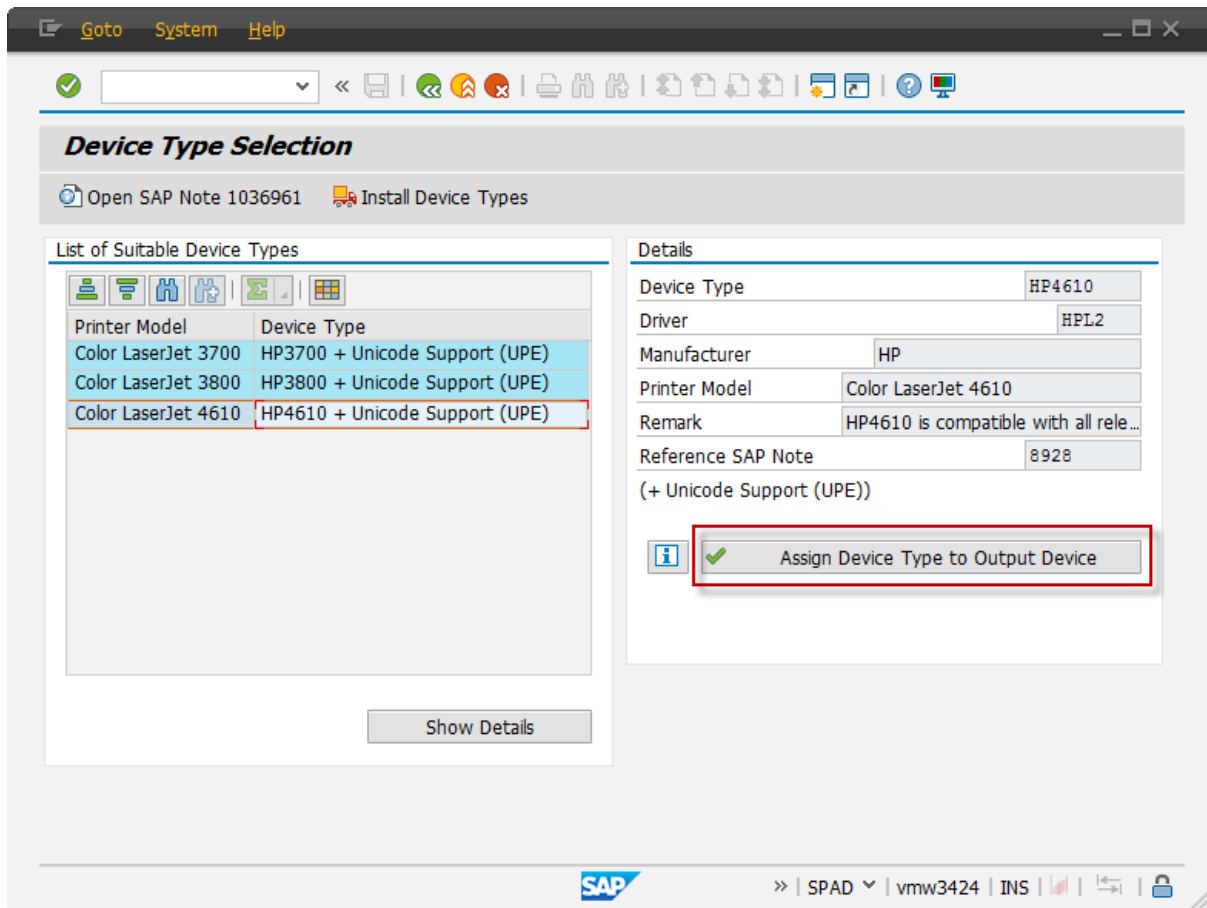
(resident fonts required)

If this comment is shown, the suggested device type may require a special printer. So-called resident fonts have to be installed on this printer. Please check whether your printer actually possesses such kind of module.

Device Type not yet installed!

If this flag is shown, the selected device type has not been installed in the system. Before it can be assigned to the output device, you have to install it. See chapter 5 to learn how to install a new device type.³

³ In case the UPE solution is required an important fact has to be considered, if the selected device type is not yet installed in the system. UPE is not compatible with all device types. Unfortunately this compatibility can only be checked, if the device type is installed. As a consequence, you may have to choose another device type after you have installed the previously selected device type. UPE is possible with postscript and PCL printers.



To assign this device type to the output device click on “Assign Device Type to Output Device”.

After that the wizard is closed and transaction SPAD is reopened. The selected device type has been automatically assigned to the output device. If the UPE solution is required for printing the selected languages, the best fitting standard URDT⁴ is assigned to the output device, too.

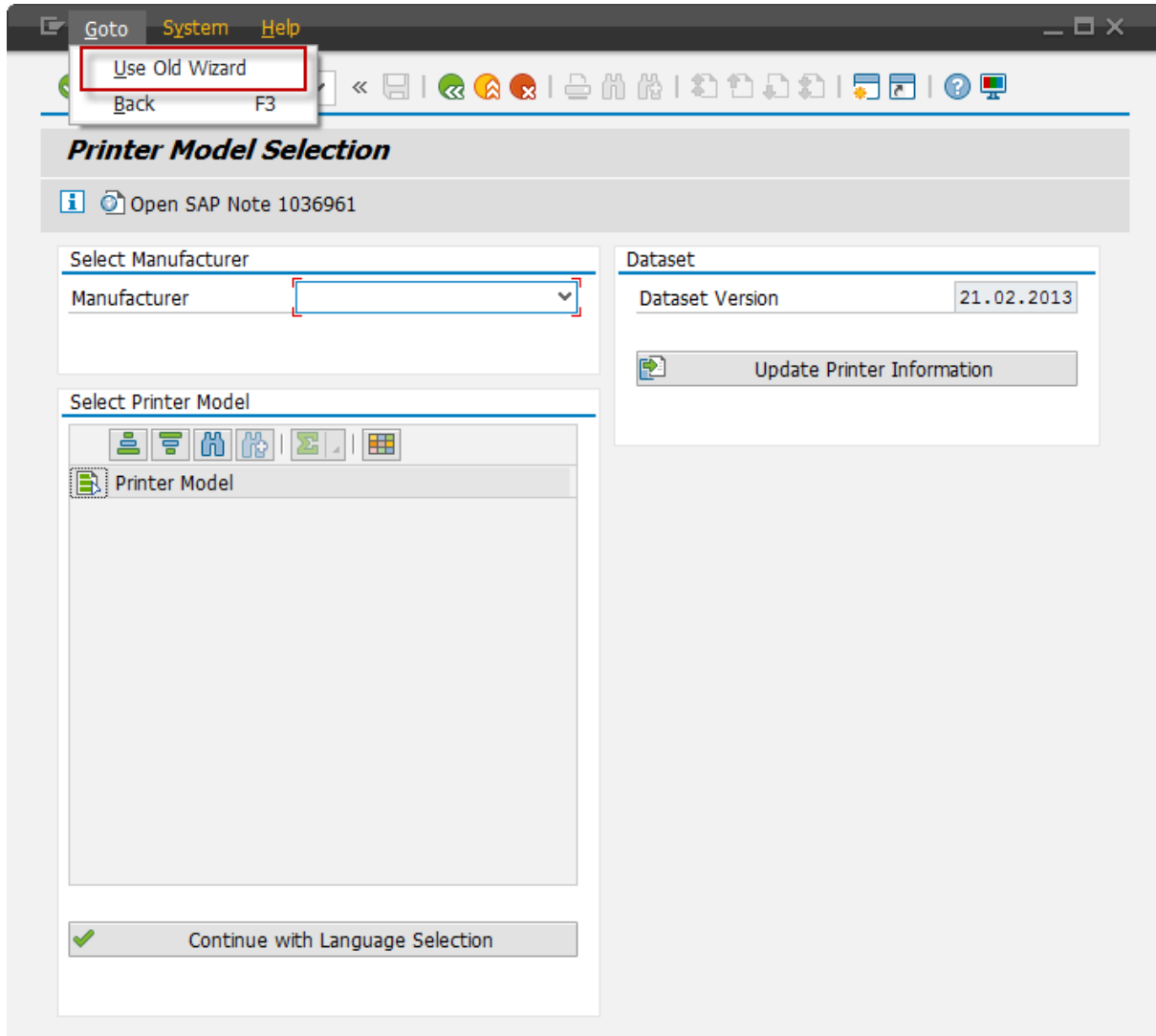
⁴ At the time of the creation of this document four different standard URDTs are available: *URDTC*, *URDTT*, *URDTJ*, *URDTK*. These URDTs differentiate in the used flavor for CJK-languages (Chinese, Japanese, Korean). For further information about the different standard URDTs see note [1812076](#). The best fitting standard URDT is determined based on the selected languages. For example, if you select “Western European” and “Japanese”, the URDT *URDTJ* is used.

The screenshot shows the SAP Spool Administration: Output Device (Change) interface. The window title is "Output Device" and the menu bar includes "Edit", "Goto", "Extras", "Utilities", "System", and "Help". The main title is "Spool Administration: Output Device (Change)". The "Output Device" field contains "ZDEMO_PRINTER" and the "Short name" field contains "ZDEM". The "DeviceAttributes" tab is selected, showing fields for "Device Type", "Device Class", "Authorization Group", "Model", "Location", and "Message". The "Device Type" dropdown is highlighted with a red box, showing "HP4610 : HP Color LJ 4610 R4.5+". The "Unicode Print Settings" section is also highlighted with a red box, showing "Unicode Ref. Device Type: URDTC" and "Supported Languages". There are checkboxes for "Do not use for printing ABAP lists" and "Type 15 PCL5 Format", and buttons for "Change Assignment" and "Delete Assignment". The SAP logo is visible in the bottom left corner, and the user information "SPAD | vmw3424 | INS" is in the bottom right corner.

Now save your work to persist the changes.

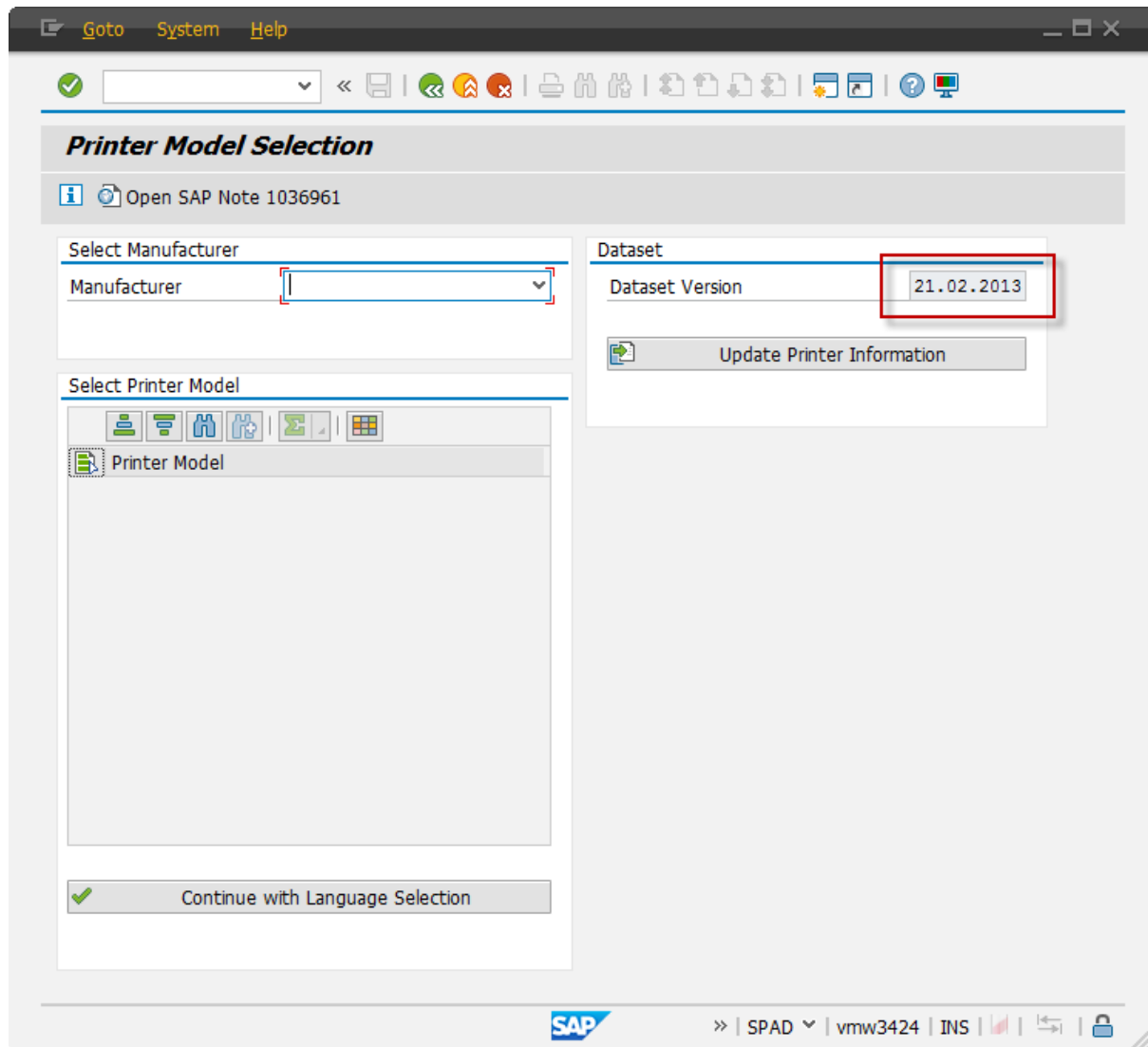
3. How to Use the Old Device Type Wizard

The old Device Type Wizard is available via the “Goto” menu in the new Device Type Wizard.

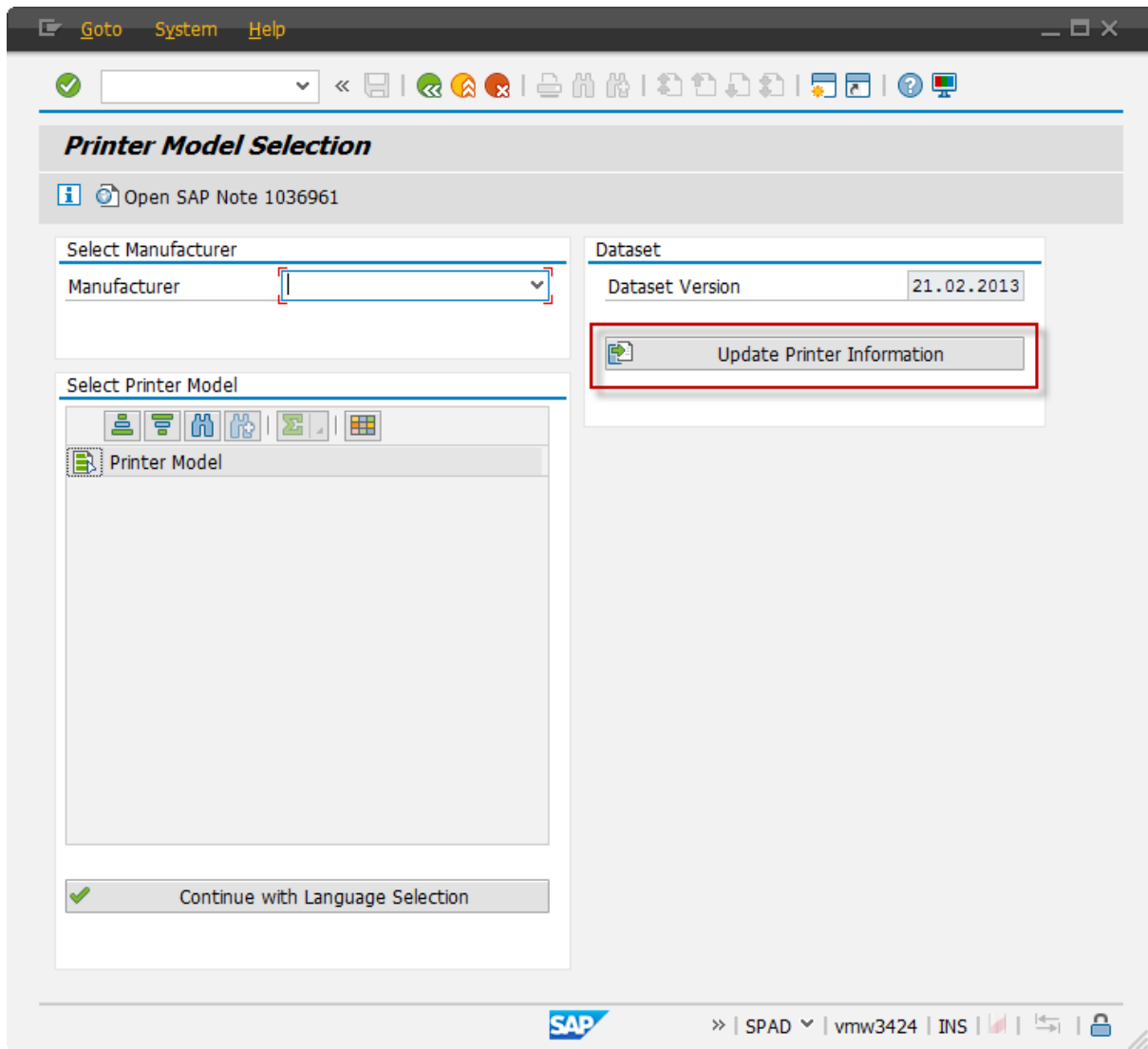


4. Updating Information Database Tables on Your System

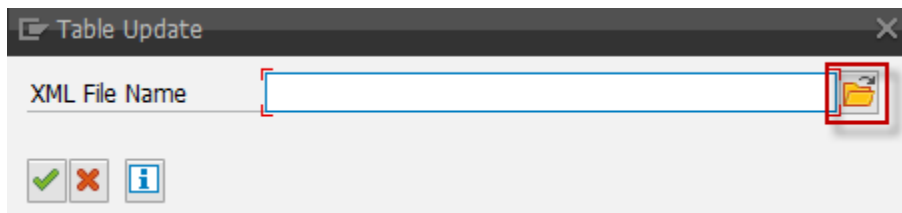
The relationship between printer models and device types and the list of printer manufacturers are stored in database tables. The version of the current data on your system is displayed at the top right corner of the screen.



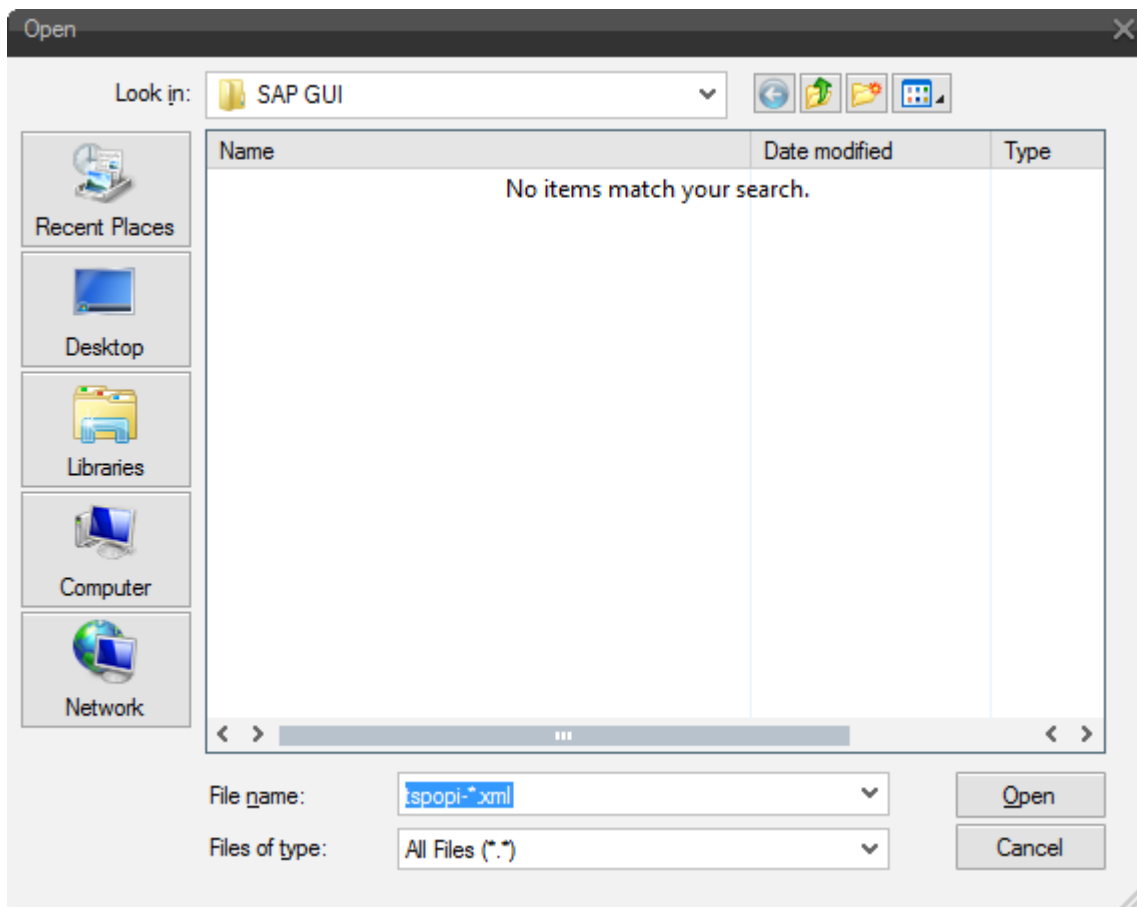
The latest data is provided as an attachment to SAP Note [1036961](#), 'Device type selection in transaction SPAD'. The file name is `tspopi-yyyymmdd.xml` where `yyyymmdd` is the date of the file creation. (The xml file is zipped so the actual attached file names are `tspopiyyyymmdd.zip`.)



To update your table, download the attachments to your local PC, unzip them, and then click on "Update Printer Information". A simple dialog box appears.



Click on the marked button. A file dialog appears.

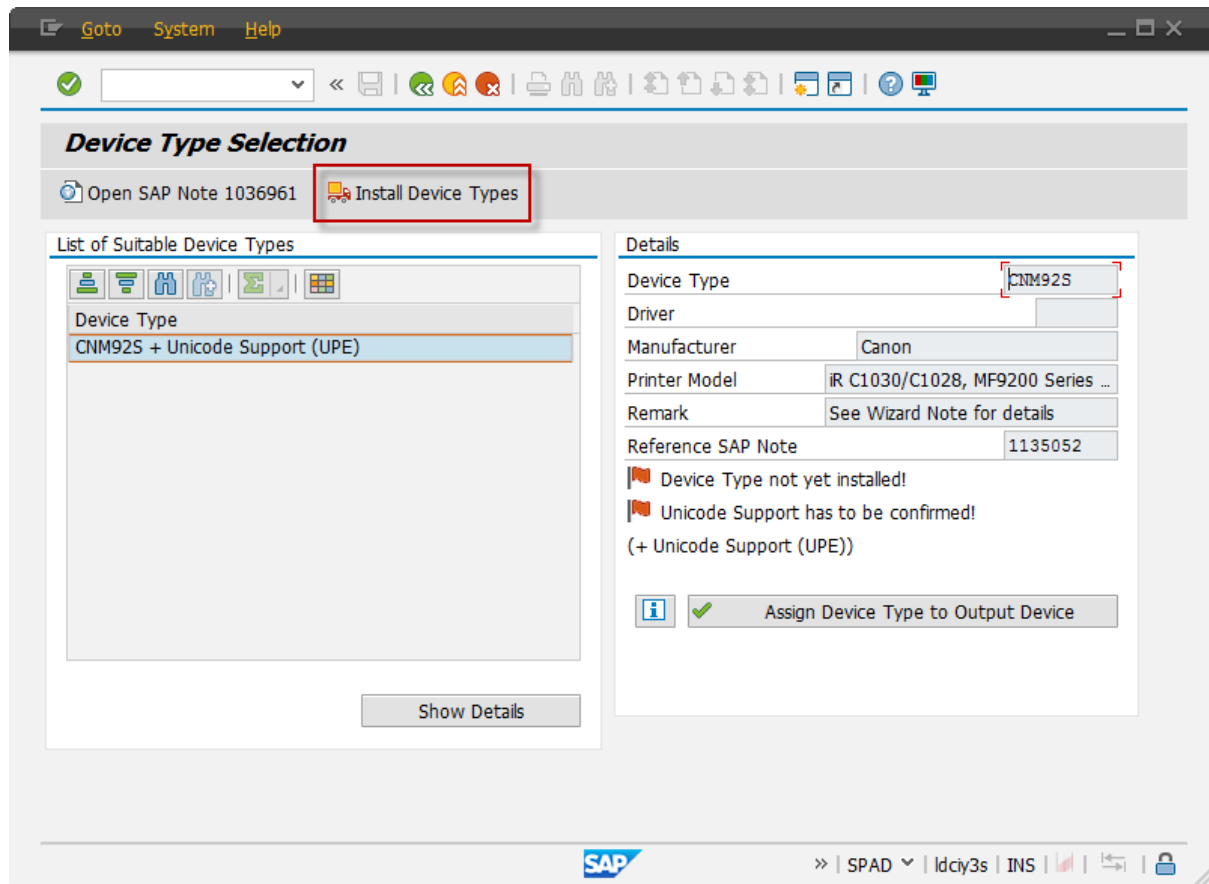


Select the downloaded file and click on the Open-Button.

After that the database tables are updated automatically.

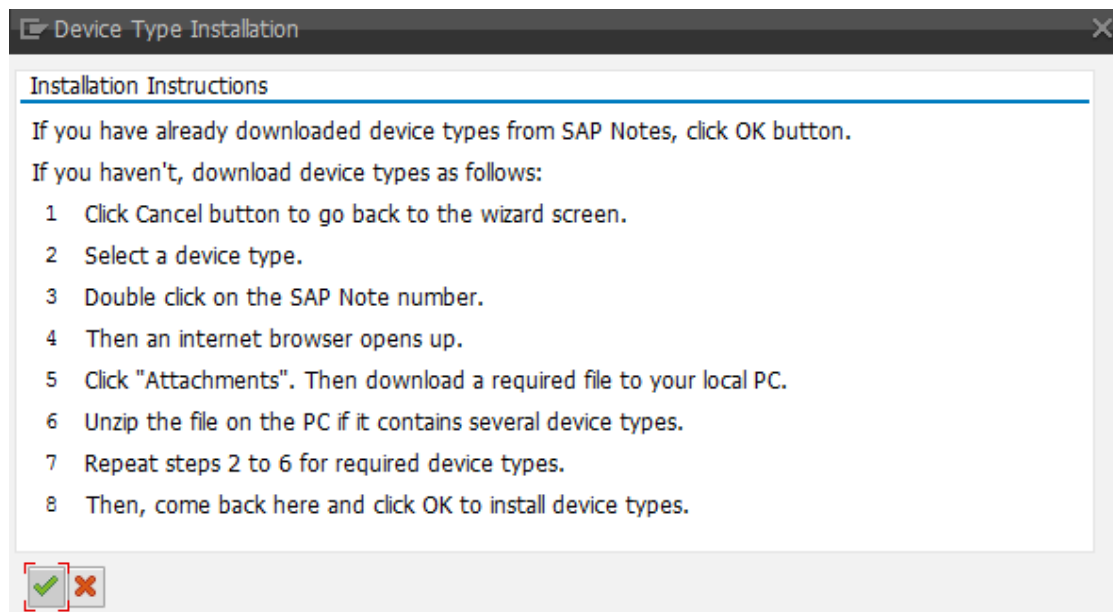
5. Install a Device Type

Sometimes a device type might not be installed on your system. You can install it in a traditional way as described in SAP Note [6427](#), 'Information about device type upload/download'. However, it is also possible via the Device Type Wizard.



Click on "Install Device Type".

On the following popup further instructions appear.



6. Reference SAP Notes

- [1036961](#) Device type selection wizard in transaction SPAD
- [1812076](#) Unicode Printing Enhancement (UPE)
- [6427](#) Information about device type upload/download