

Update on the SAP GUI Family

Q3/2014

Public

The SAP logo is located in the bottom left corner of the slide. It consists of the letters "SAP" in white, bold, sans-serif font, set against a blue, trapezoidal background that tapers to the right.



Disclaimer

This presentation outlines our general product direction and should not be relied on in making a purchase decision. This presentation is not subject to your license agreement or any other agreement with SAP. SAP has no obligation to pursue any course of business outlined in this presentation or to develop or release any functionality mentioned in this presentation. This presentation and SAP's strategy and possible future developments are subject to change and may be changed by SAP at any time for any reason without notice. This document is provided without a warranty of any kind, either express or implied, including but not limited to, the implied warranties of merchantability, fitness for a particular purpose, or non-infringement. SAP assumes no responsibility for errors or omissions in this document, except if such damages were caused by SAP intentionally or grossly negligent.

Agenda

1. What is the SAP GUI Family

2. SAP GUI for Windows

3. SAP GUI for Java

4. SAP GUI for HTML

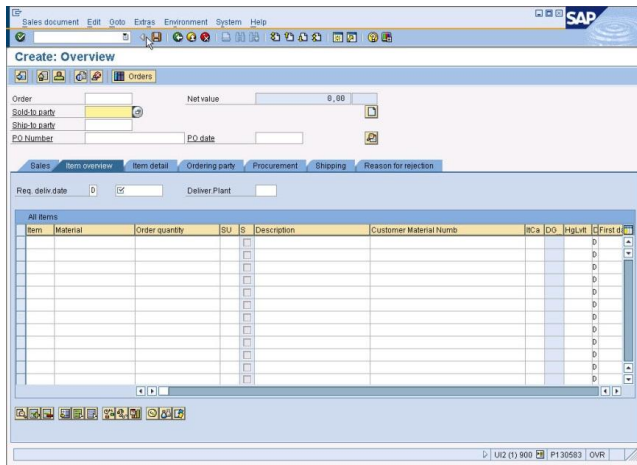
5. Unified SAP UI Landscape

6. Choosing the right GUI

7. Summary

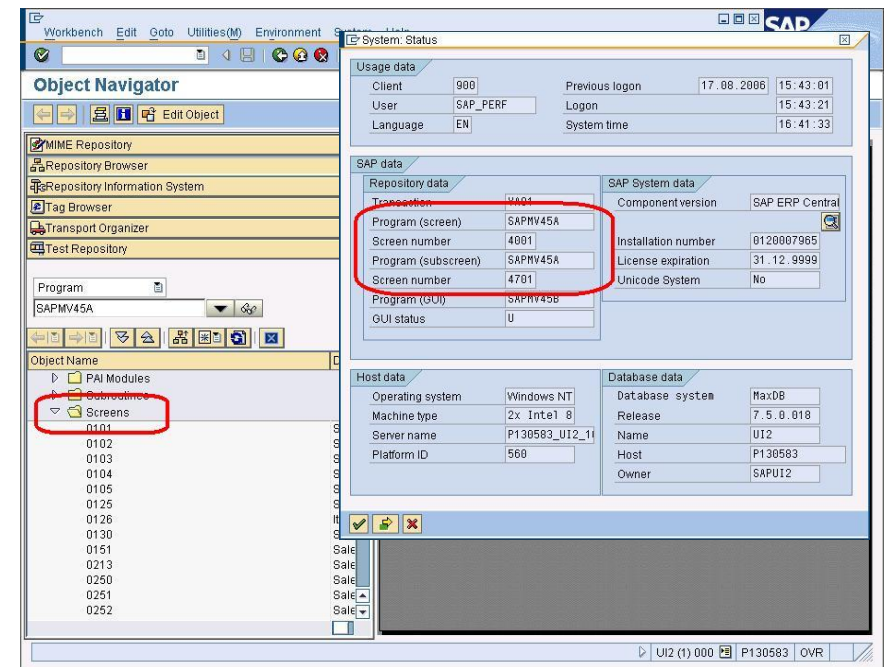
Technologies Covered in This Presentation

This presentation is about the Dynpro-based front end technologies.

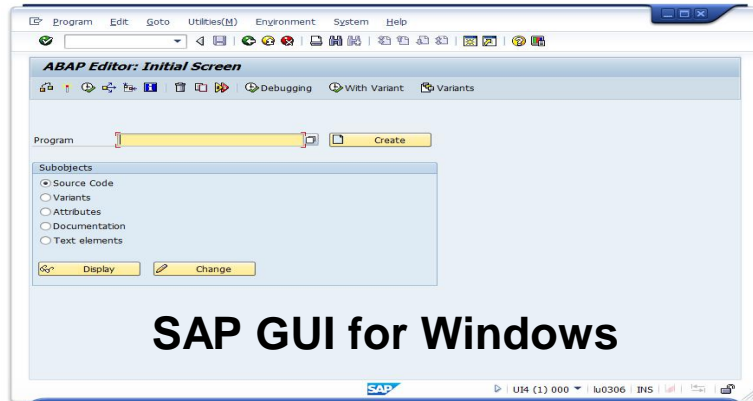


In English DYNPROS are
Usually called screens

Dynpro is the abbreviation for
DYNAmic PROgram



Members of the SAP GUI Family



SAP GUI for Windows



SAP GUI for HTML



SAP GUI for Java

The Fundamentals of the SAP GUI Family

Separation of user interface and SAP system

- Changes in the GUI do not affect business rules and logic
- Business data reside in the back end system

Why are there multiple GUIs for the same applications?

- Different client operating systems (Windows, Linux, ...)
- Different user experience (power user, plant worker, ...)
- Different tasks (developer, clerk, worker, ...)
- Different environments (standalone client, portal integration, ...)

Best fit into the existing infrastructure

- Low or high bandwidth available
- Use of terminal servers possible
- Available for all supported back end releases

Agenda

1. What is the SAP GUI Family
2. **SAP GUI for Windows**
3. SAP GUI for Java
4. SAP GUI for HTML
5. Unified SAP UI Landscape
6. Choosing the right GUI
7. Summary

What's new in SAP GUI for Windows 7.40 (1/3)

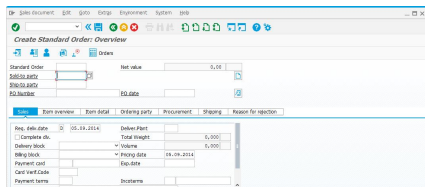
The following new features are included

- New SAP GUI design “Blue Crystal” (only for Windows 7 and higher)
- Unified SAP UI Landscape
 - Unifies the persisted connection configuration data from SAP GUI for Windows, SAP GUI for Java and NWBC
 - Centralized XML files
- Font based icons
- Several GUI settings can now be pre-set on the installation server
- Closer integration between SAP GUI and NWBC

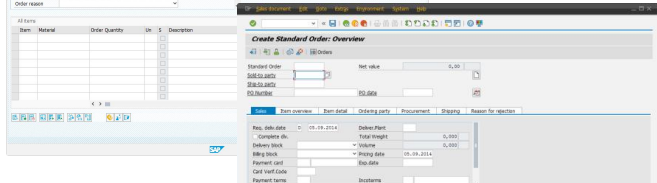
Not new but still remarkable

- SAP Signature Theme Colors
- Security Center improvements
- Customizable permissions in the SAP GUI Options dialog

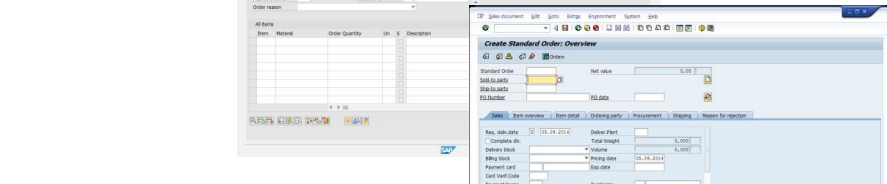
What's new in SAP GUI for Windows 7.40 (2/3) Available Themes



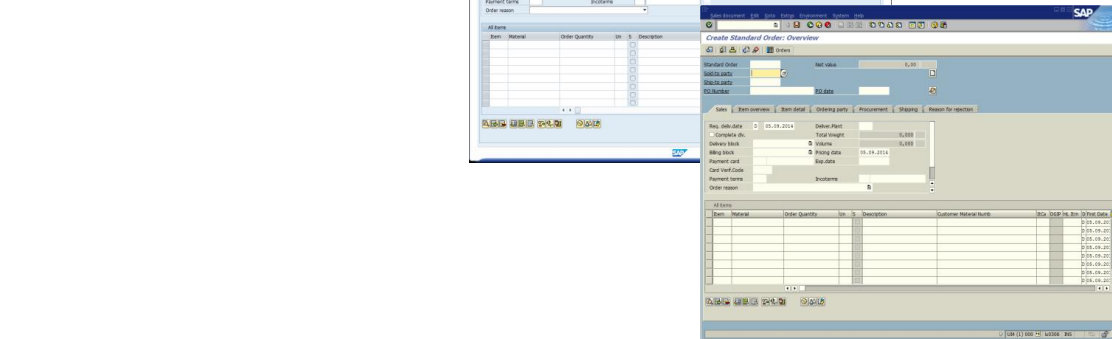
Blue Crystal Theme



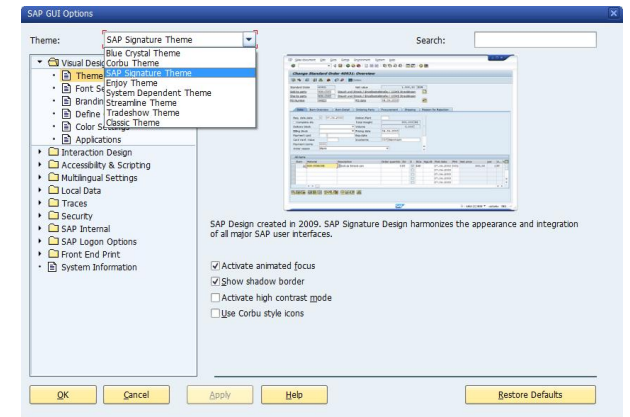
Corbu Theme



SAP Signature Theme



Enjoy Theme



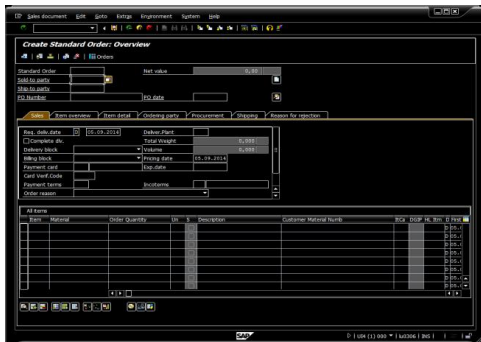
The older themes are also still available

What's new in SAP GUI for Windows 7.40 (3/3)

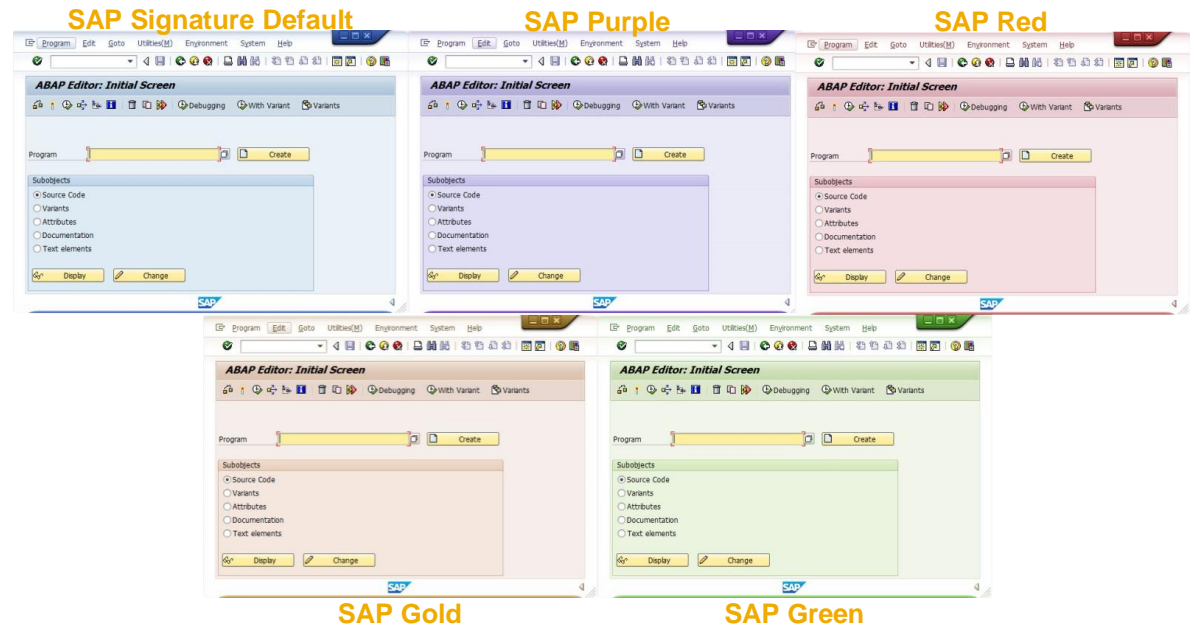
SAP Signature Theme

SAP Signature Theme is the default

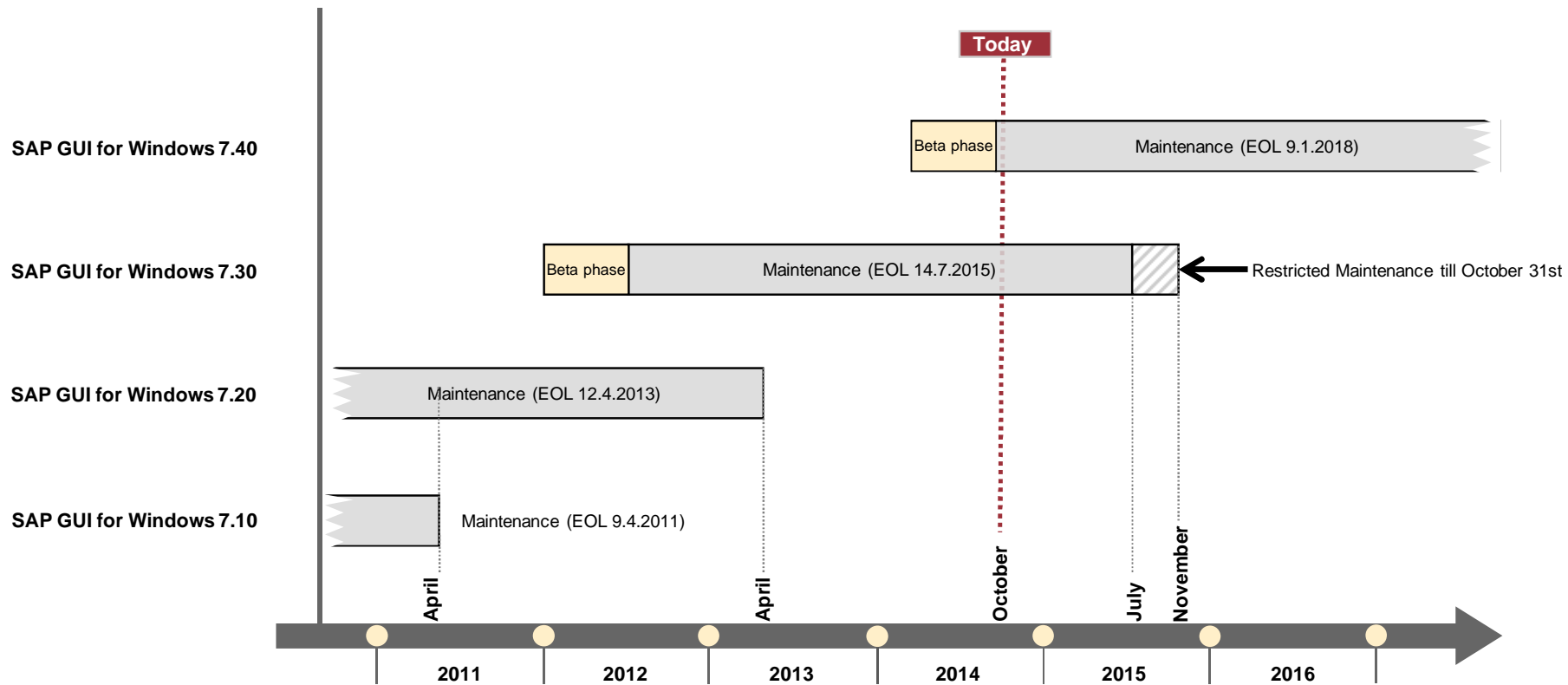
- In standalone mode SAP GUI is using SAP Signature as default
- When running within NWBC we use the same theme as NWBC
- SAP Signature is available in colors
- SAP Signature is available as “High Contrast” theme for the visually impaired



High Contrast



Support Timeline for SAP GUI for Windows



Refer to [SAP Note 147519](#) for details

Supported Operating Systems and Office versions

SAP GUI for Windows 7.40 is supported on

- Windows Vista (Business / Ultimate), 32 and 64 (AMD64, EM64T) bit versions
- Windows Server 2008, 32 and 64 (AMD64, EM64T) bit versions
- Windows Server 2008 R2, 64 (AMD64, EM64T) bit version
- Windows 7 (Business Editions), 32 and 64 (AMD64, EM64T) bit versions
- Windows 8 and 8.1 (Business Editions), 32 and 64 (AMD64, EM64T) bit versions
- Windows Server 2012 and Server 2012 R2 64 (AMD, EM64T) bit versions

Details can be found in note 66971

Microsoft Office Support

- Since SAP GUI for Windows 7.30 patch 3 we support the 32 bit version of the Microsoft Office 2013. The use of the 32 bit version of Microsoft Office 2013 is also supported on 64 bit versions of the operating system.
- Since SAP GUI for Windows 7.30 patch 7 we support the 64 bit version of the Microsoft Office for SAP Desktop Office Integration.
- Since Microsoft Office 365 ProPlus (msi or Click2Run) installs Office 2013 it is also supported in the same way.

Details can be found in note 722513 and 1442028

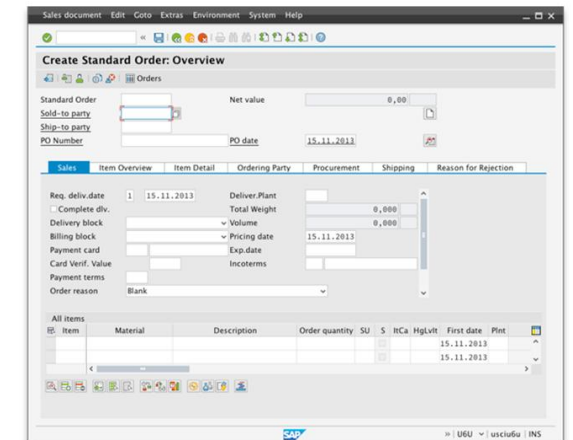
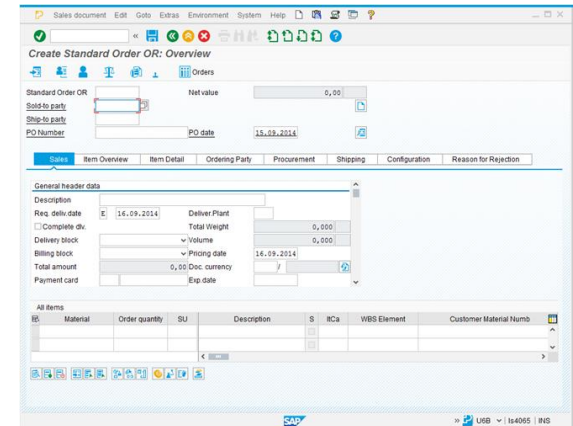
Agenda

1. What is the SAP GUI Family
2. SAP GUI for Windows
3. **SAP GUI for Java**
4. SAP GUI for HTML
5. Unified SAP UI Landscape
6. Choosing the right GUI
7. Summary

What's new in SAP GUI for Java 7.40

The following new features are included

- New SAP GUI design “Blue Crystal”
- Font based icons
- New embedded browser component based on WebKit which provides a better user experience and richer featureset
- Unified UI landscape (aligned with SAP GUI for Windows and NWBC)
- Enhanced search in F4 (HANA)
- New controls (DDL, input & search field) for toolbar in IDA ALV
- Localized texts in 35 languages (SAP Logon, preferences, etc.)



Supported Operating Systems

SAP GUI for Java 7.40 is supported on

- Linux Red Hat Enterprise Linux 7
- Linux Fedora 21*
- Linux openSuSE 13.2*, SLED 12*, SLES 12*
- Linux Ubuntu 14.04
- OS X 10.9, 10.10*
- Windows 7 (Professional / Ultimate / Enterprise, 32 & 64 bit)
- Windows 8, 8.1 (Professional / Ultimate / Enterprise, 32 & 64 bit)

*) Test with final OS version pending

Java 8 is required

Detailed requirements regarding supported operating systems and Java Virtual Machines for SAP GUI for Java are documented in SAP note 2059424.

Limitations of the SAP GUI for Java

Limitations compared to SAP GUI for Windows

- Office integration into SAP transactions is not available
- Some GUI components like the BEx explorer are not available
- Some controls in SAP GUI for Windows used for special purposes are not available as JavaBean in SAP GUI for Java, for example
 - SAP SmartForms
 - advanced ABAP Editor Control
- Graphical screen painter is not available
- To see if a transaction is supported for use with SAP GUI for Java check in transaction SE93
- Anyway most of the transactions work perfectly

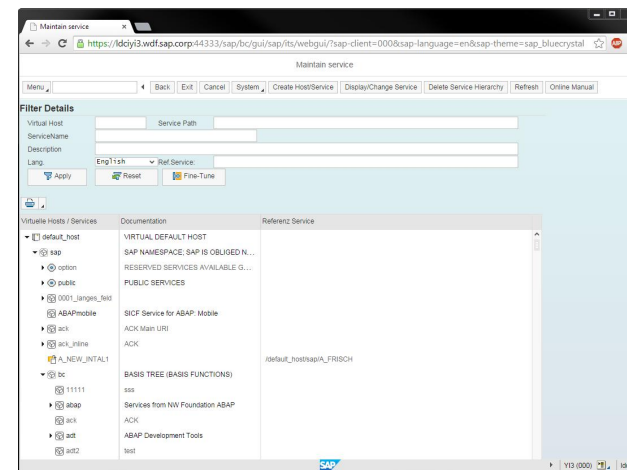
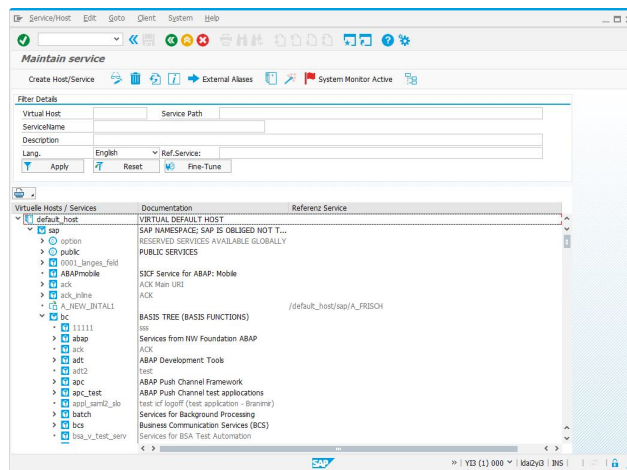
Agenda

1. What is the SAP GUI Family
2. SAP GUI for Windows
3. SAP GUI for Java
- 4. SAP GUI for HTML**
5. Unified SAP UI Landscape
6. Choosing the right GUI
7. Summary

What is the SAP GUI for HTML?

The SAP GUI for HTML is an application running on the SAP Internet Transaction Server (ITS)

- It extends the reach of SAP systems into the web
- It generically maps SAP Dynpro-based screens to HTML
- It has almost zero footprint on the client PC
- Drives transactions within the SAP system
- Can be used with all SAP releases currently supported



SAP GUI for HTML: Client Platforms

Internet Explorer on Windows

- Internet Explorer 7 - 11

Mozilla Firefox

- Supported version see note 990034
- Windows; Linux; Mac OS X

Safari

- Mac OS X 10.7 and above

Google Chrome

- Current version on Windows

Required Java runtime

- For some operations SAP GUI for HTML needs a Java runtime version 7 or 8 on the client PC
- See note 980772 for details

The top screenshot shows the 'Internal ITS: Status' page with the following data:

Parameter	Value
Sessions:	2 3.187.490Bytes 1.593.745Bytes/Session 2.788.200Bytes Server: lu0306_UH4_10
Templates:	5.375.566Bytes
Sess. & Templ.:	8.563.056Bytes Amount of emiglobal_area_MB used (1024 MB)

The bottom screenshot shows the 'Work Process Memory Consumption' table:

Work Proc.	Type	Peak	Memory	Total	Current
WP0(6)	Shared (EG)	10.395.734	10.395.734	2.269	2.377
WP1(6)	Shared (EG)	5.024.776	5.024.928	11	1.192
WP2(6)	Shared (EG)	1.164	1.164	6	6
WP3(6)	Shared (EG)	1.164	1.164	6	6
WP4(6)	Shared (EG)	1.268	1.268	8	8
WP5(6)	Shared (EG)	1.164	1.164	6	6

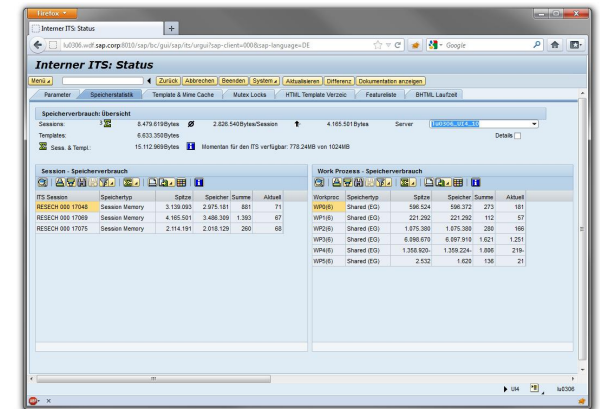
For details please check the Platform Availability Matrix: <http://service.sap.com/pam>

New in SAP GUI for HTML

With the downward compatible kernel (DCK) 7.20 the new version of the SAP GUI for HTML is available

- With this new version the SAP GUI for HTML has been completely reworked
- The rendering is now based on Unified Rendering which is also used by many other SAP UI technologies.
- Similar Look & Feel as other UI technologies
- Better Portal integration
- Full Theme support
- Unified client requirements

This new version is standard for systems with an SAP_BASIS level of 7.02 / 7.20 or higher. In previous versions running the DCK 7.20 it can be manually activated (see note 1637287).



Limitations of the SAP GUI for HTML

Because of the technical attributes of HTML or the Web Browser, the use of SAP GUI for HTML is somewhat restricted as compared to the use of a GUI, which works on operating system level.

- The controlling of an OLE automation server is not possible
- Keyboard navigation is limited as known from other web applications
- Office integration is view only
- It does not support multiple sessions. If you need multiple sessions you have to do multiple logins.
- To see if a transaction is supported for use with SAP GUI for HTML check in transaction SE93
- Anyway most of the transactions work perfectly

For detailed information see note 314568

Agenda

1. What is the SAP GUI Family
2. SAP GUI for Windows
3. SAP GUI for Java
4. SAP GUI for HTML
- 5. Unified SAP UI Landscape**
6. Choosing the right GUI
7. Summary

Unified SAP UI Landscape

Unified SAP UI Landscape

- Configuration of SAP Logon is now unified with SAP GUI for Java and NWBC
- Configuration is based on XML Files
- Optional for SAP GUI standalone, mandatory for use with NWBC (will also become mandatory for SAP GUI for Windows with the next release)
- Existing files will automatically be merged and converted when installing NWBC together with SAP GUI
- SAPUILandscapeGlobal.xml contains the Message Server and SAP Router information
- SAPUILandscape.xml contains the SAP Logon entries and Shortcuts
- No need to have sapmsXXX ports maintained in /etc/services

Agenda

1. What is the SAP GUI Family
2. SAP GUI for Windows
3. SAP GUI for Java
4. SAP GUI for HTML
5. Unified SAP UI Landscape
- 6. Choosing the right GUI**
7. Summary

Choosing the right GUI

There are three different GUI for different purposes. Not every GUI is the right for every use case. This list shall give you some examples how to select the right one.

- User working only rarely in the SAP system
 - If your company has many users like this the use of SAP GUI for HTML is an option for you to save effort and money for client deployment
- User working most of the day in the SAP system
 - Power users are usually better off with an installed GUI like the SAP GUI for Windows or the SAP GUI for Java
- ABAP developers
 - For ABAP development you should use the SAP GUI for Windows
- Users using non Microsoft operating systems
 - For those users you can choose between SAP GUI for Java and HTML or consider to use the SAP GUI for Windows on a Terminal Server
- Integrating Dynpro transactions to the Portal
 - With the SAP GUI for HTML you are able to seamlessly integrate classic Dynpro based applications into the Enterprise Portal

Choosing the right GUI (2)

“One size fits all” approach usually does not work

- If you have several operating systems
- If your users have highly different levels of experience
- If some users need features not covered by all GUIs
- If you have difficulties rolling out client installations
- If you want to run applications introducing their own visual design like SRM
- ...

A better approach is to divide your users into groups with similar demands or experience levels and define the right GUI for each group.

Agenda

1. What is the SAP GUI Family
2. SAP GUI for Windows
3. SAP GUI for Java
4. SAP GUI for HTML
5. Unified SAP UI Landscape
6. Choosing the right GUI
- 7. Summary**

Summary

- **There is more than one way to access your SAP system**
- **To find out which way is the right one for you, you have to evaluate your demands and your infrastructure**
- **If you upgrade your SAP system take a minute to think about an upgrade of your GUI**

© 2014 SAP SE or an SAP affiliate company. All rights reserved.

No part of this publication may be reproduced or transmitted in any form or for any purpose without the express permission of SAP SE or an SAP affiliate company.

SAP and other SAP products and services mentioned herein as well as their respective logos are trademarks or registered trademarks of SAP SE (or an SAP affiliate company) in Germany and other countries. Please see <http://global12.sap.com/corporate-en/legal/copyright/index.epx> for additional trademark information and notices.

Some software products marketed by SAP SE and its distributors contain proprietary software components of other software vendors.

National product specifications may vary.

These materials are provided by SAP SE or an SAP affiliate company for informational purposes only, without representation or warranty of any kind, and SAP SE or its affiliated companies shall not be liable for errors or omissions with respect to the materials. The only warranties for SAP SE or SAP affiliate company products and services are those that are set forth in the express warranty statements accompanying such products and services, if any. Nothing herein should be construed as constituting an additional warranty.

In particular, SAP SE or its affiliated companies have no obligation to pursue any course of business outlined in this document or any related presentation, or to develop or release any functionality mentioned therein. This document, or any related presentation, and SAP SE's or its affiliated companies' strategy and possible future developments, products, and/or platform directions and functionality are all subject to change and may be changed by SAP SE or its affiliated companies at any time for any reason without notice. The information in this document is not a commitment, promise, or legal obligation to deliver any material, code, or functionality. All forward-looking statements are subject to various risks and uncertainties that could cause actual results to differ materially from expectations. Readers are cautioned not to place undue reliance on these forward-looking statements, which speak only as of their dates, and they should not be relied upon in making purchasing decisions.