

APPLIES TO:

INSTALLATION OF SAPGUI740 FOR JAVA

SUMMARY :

This article explains how to Perform the INSTALLATION OF SAPGUI740 FOR JAVA .

AUTHOR:

K.VENKATA RAMU.

COMPANY:

WILLSYS INFOSYSTEMS Pvt. Ltd.,

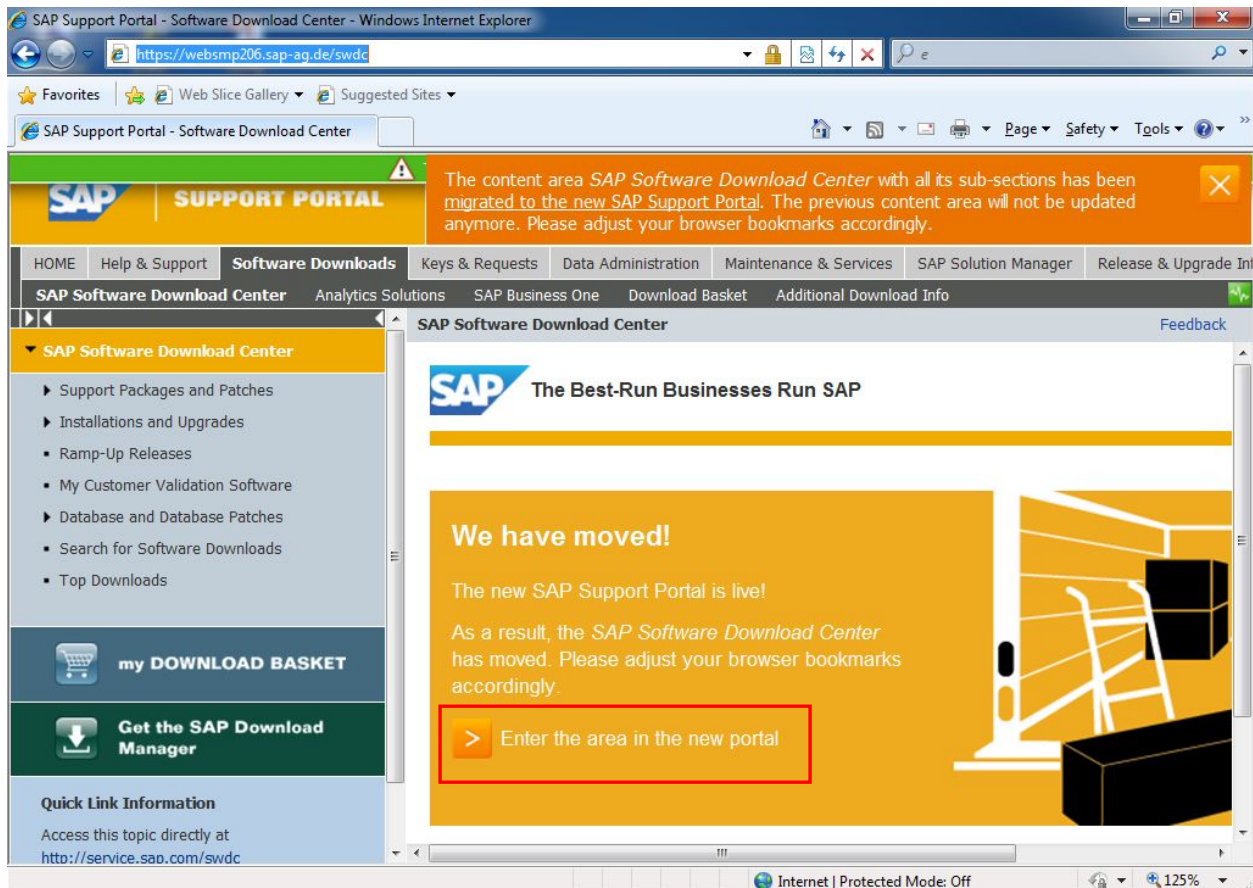
CREATED ON:

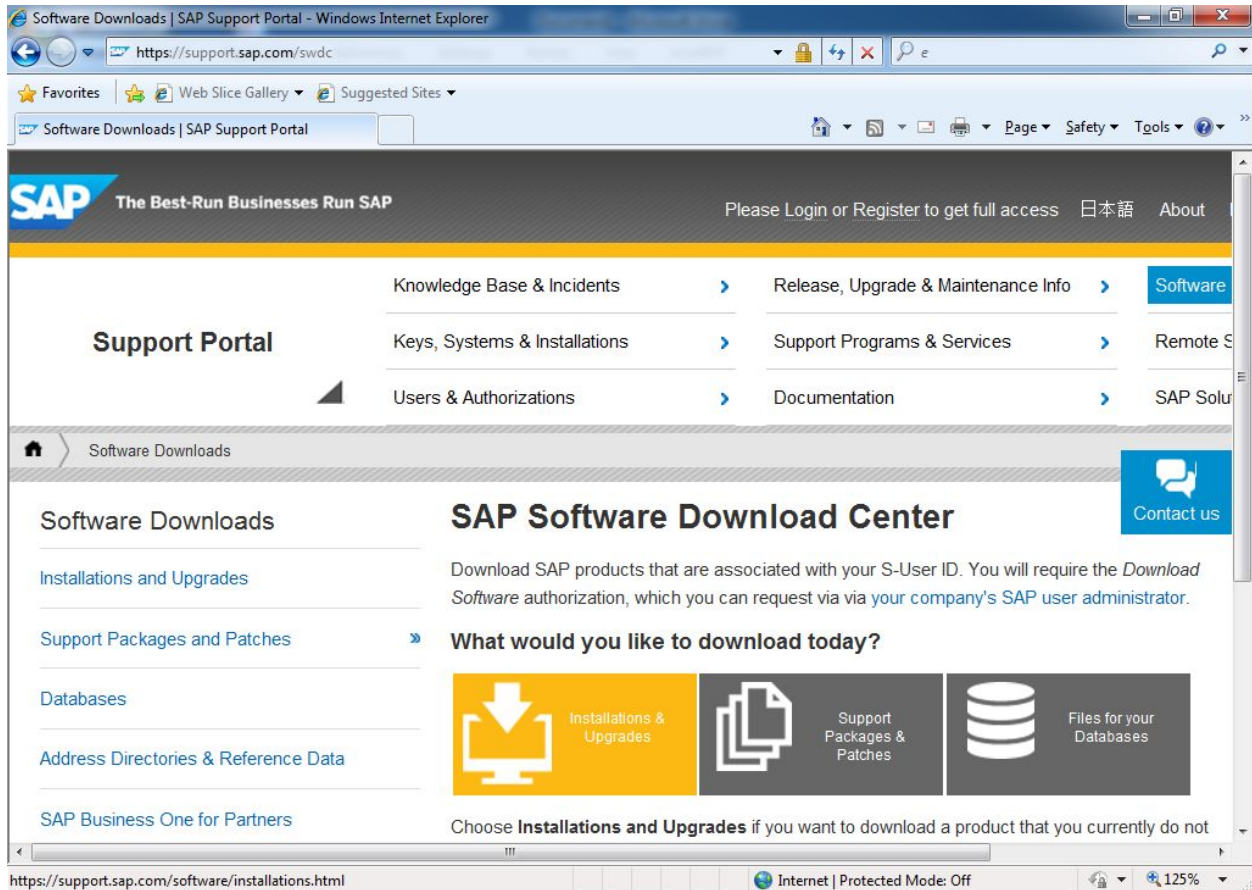
18th June 2015.

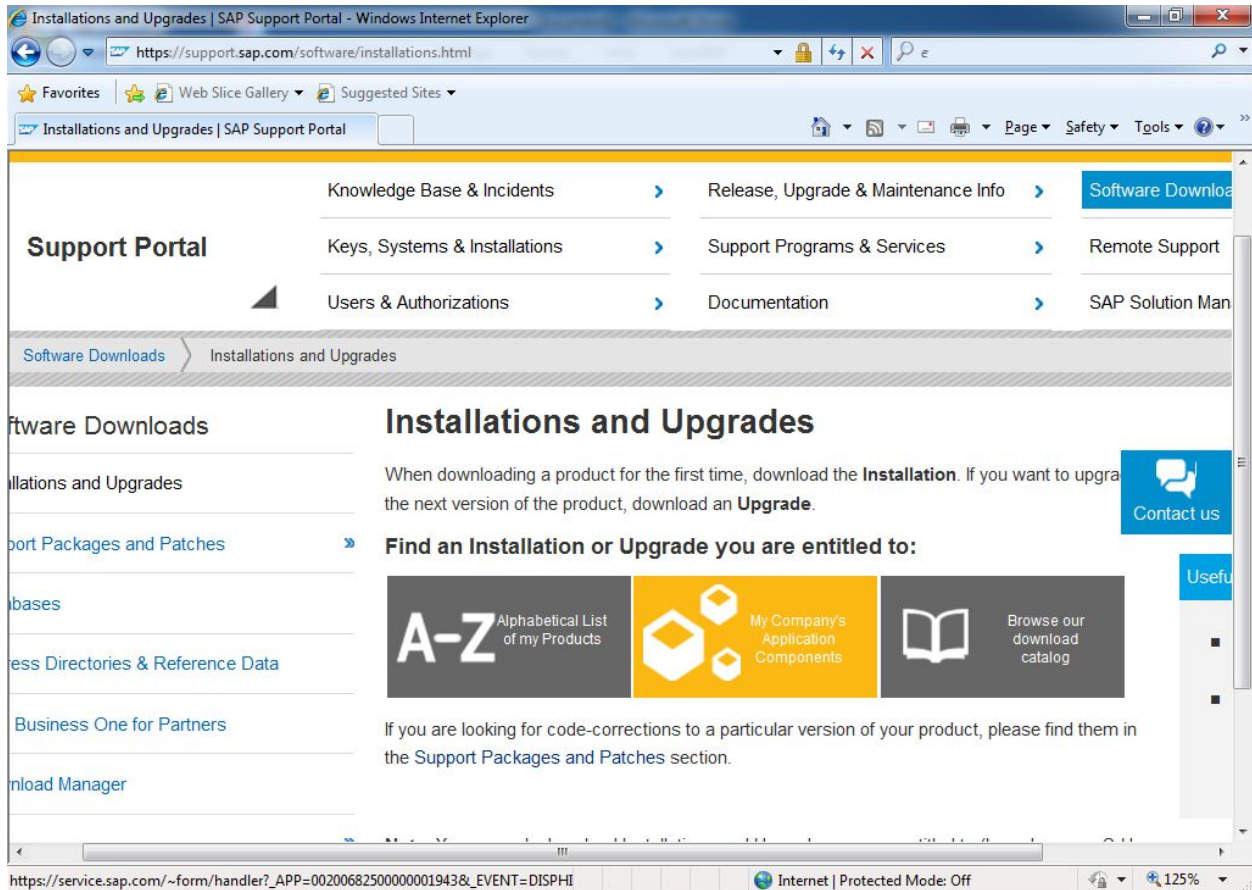


STEP1:

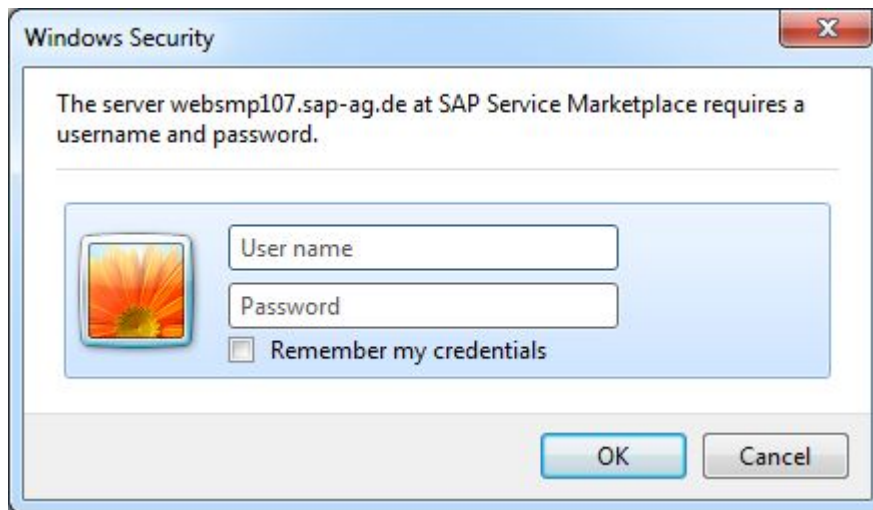
Download GUI for JAVA from service market place

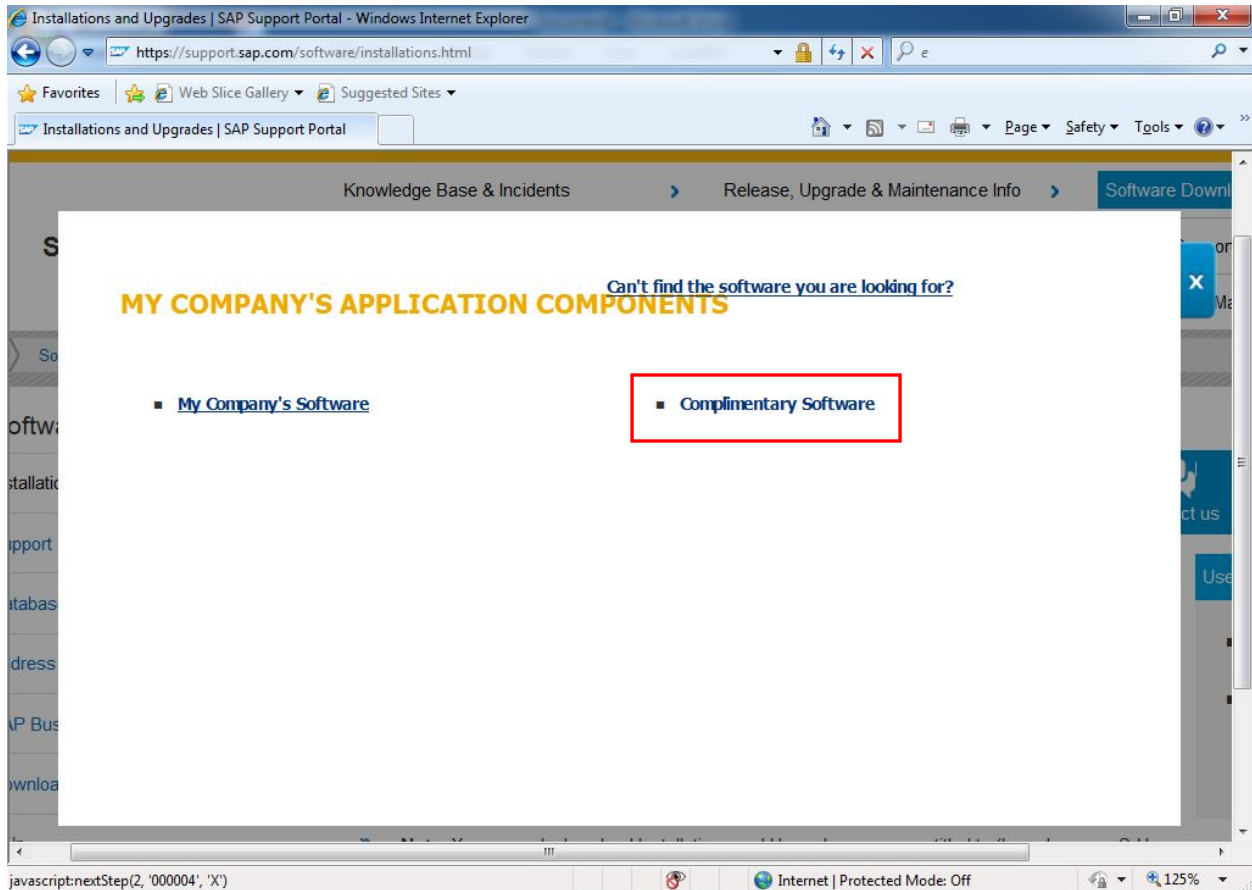


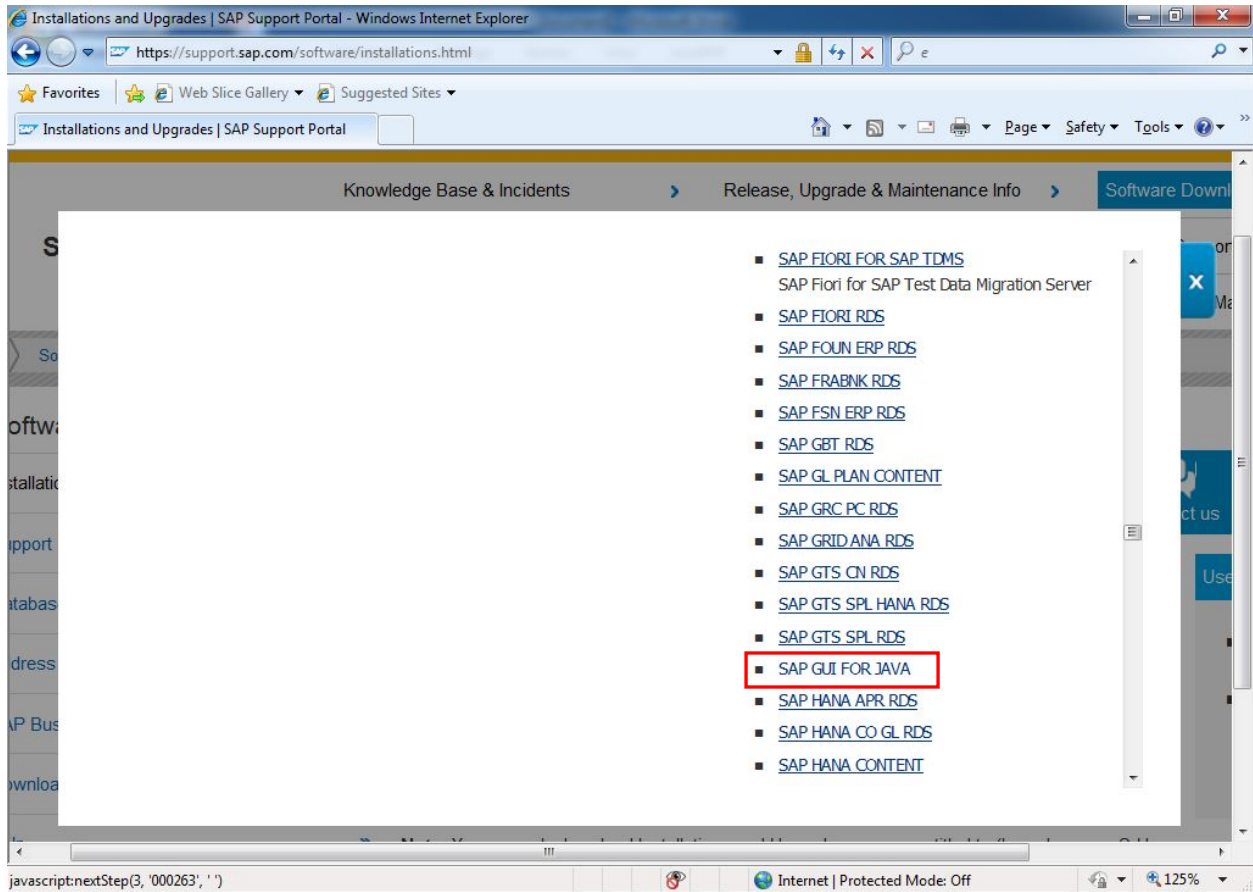


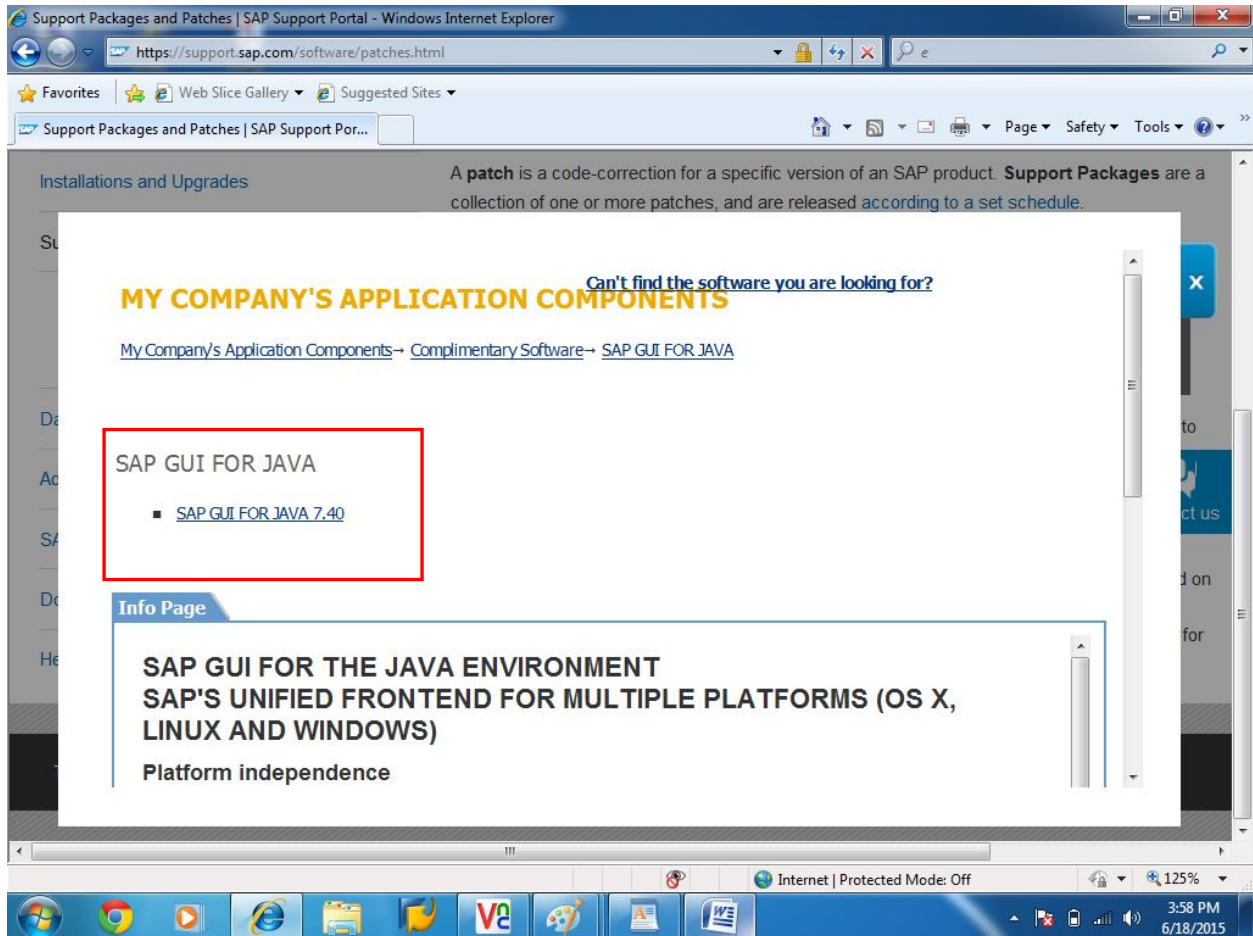


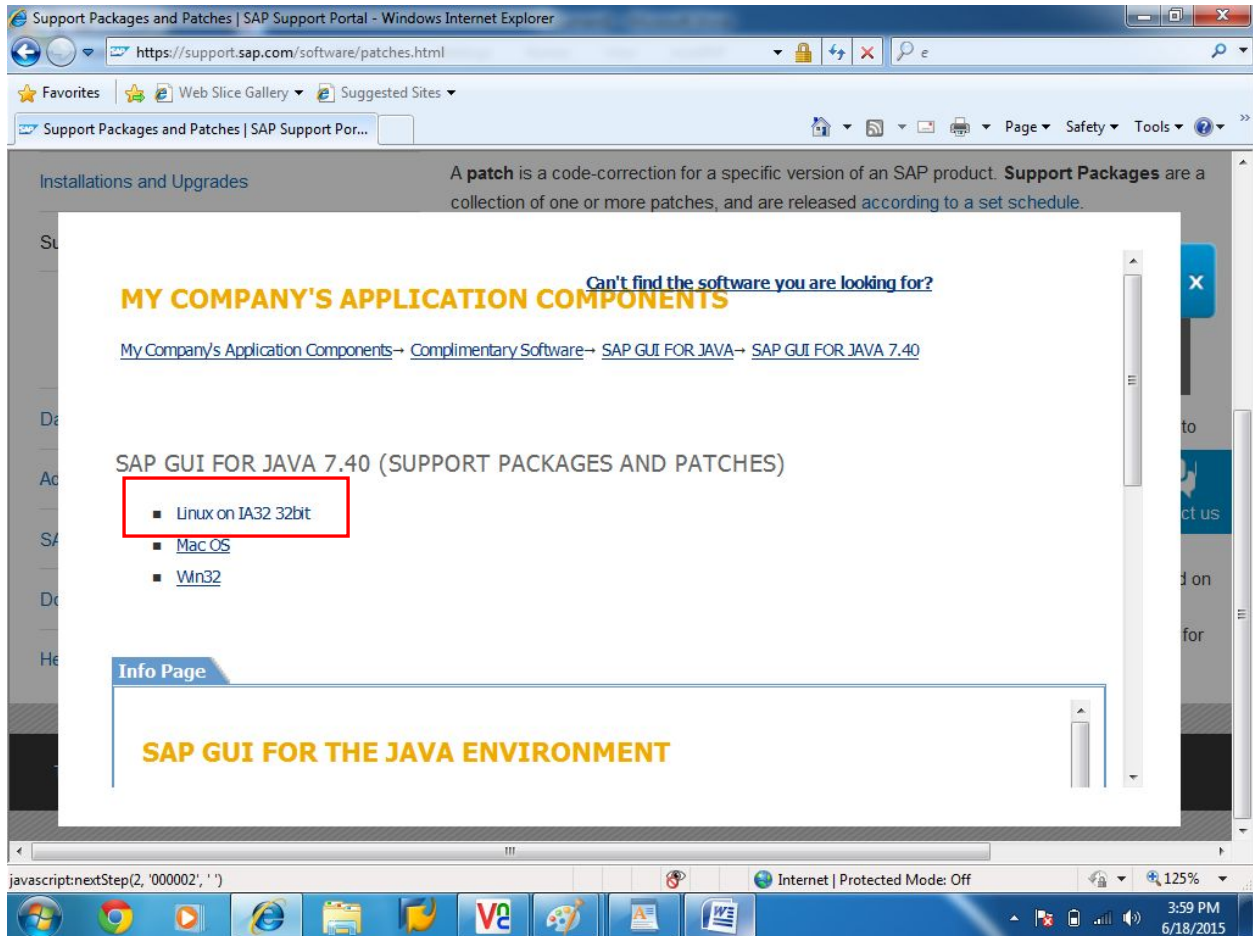
Specify UserId and Password

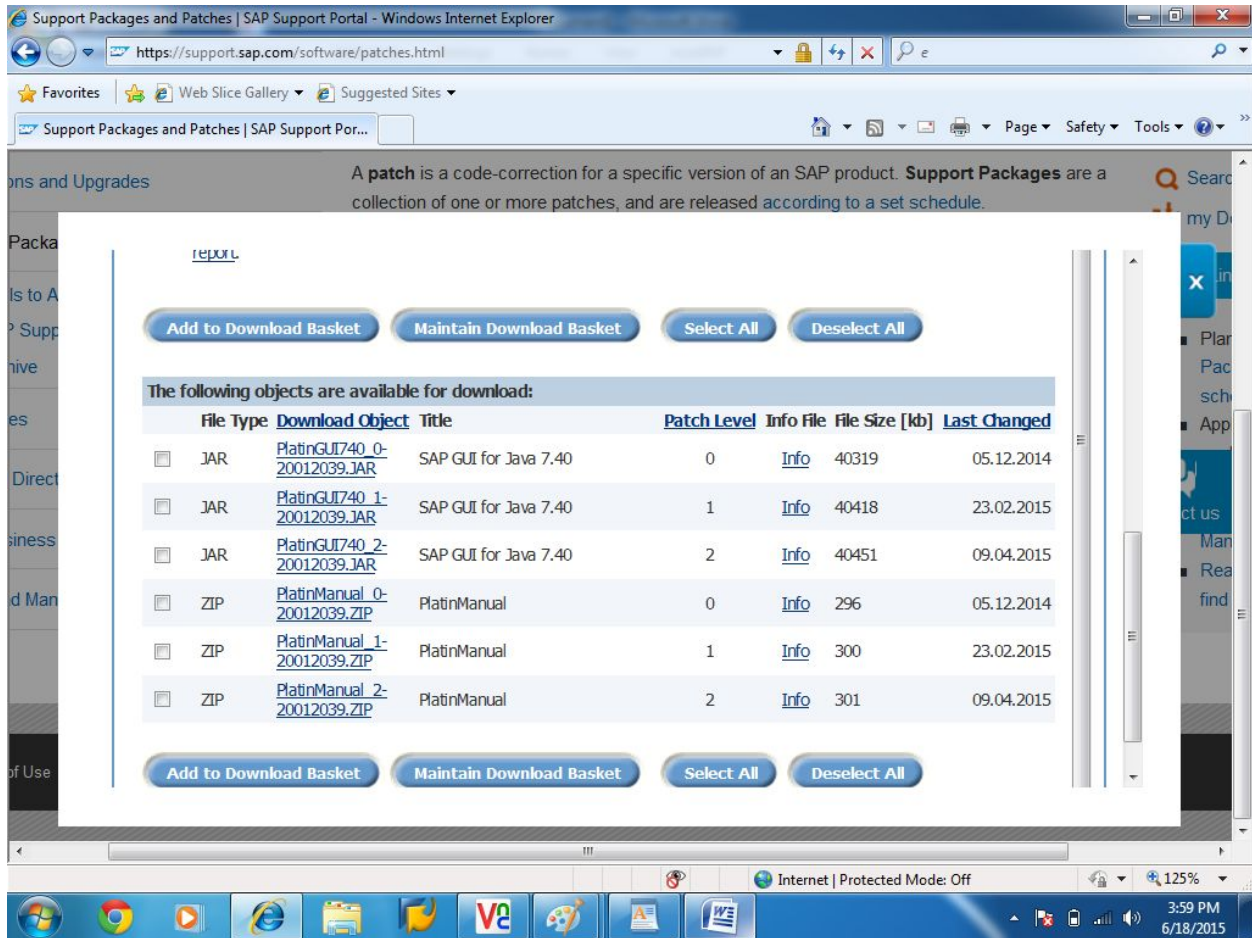


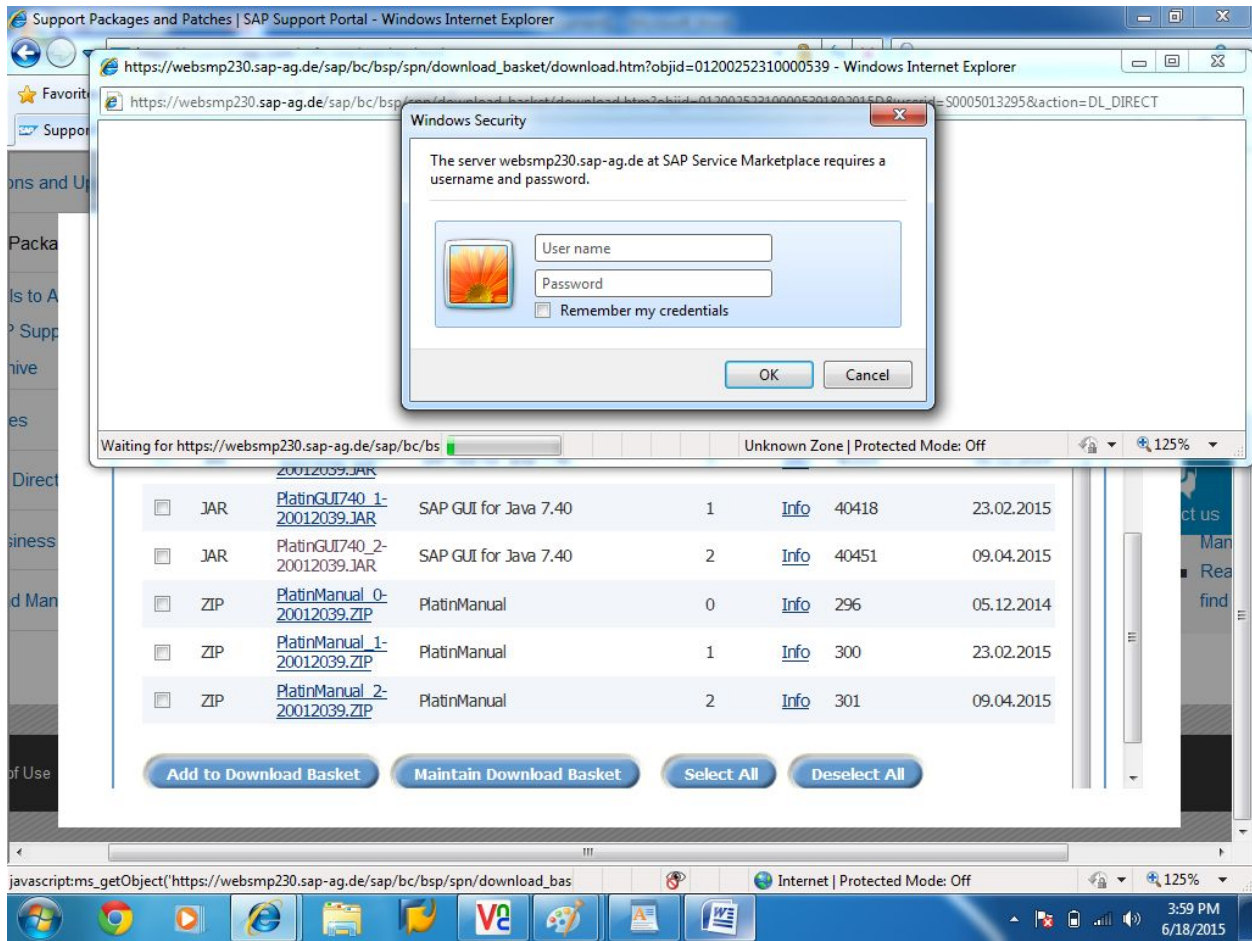






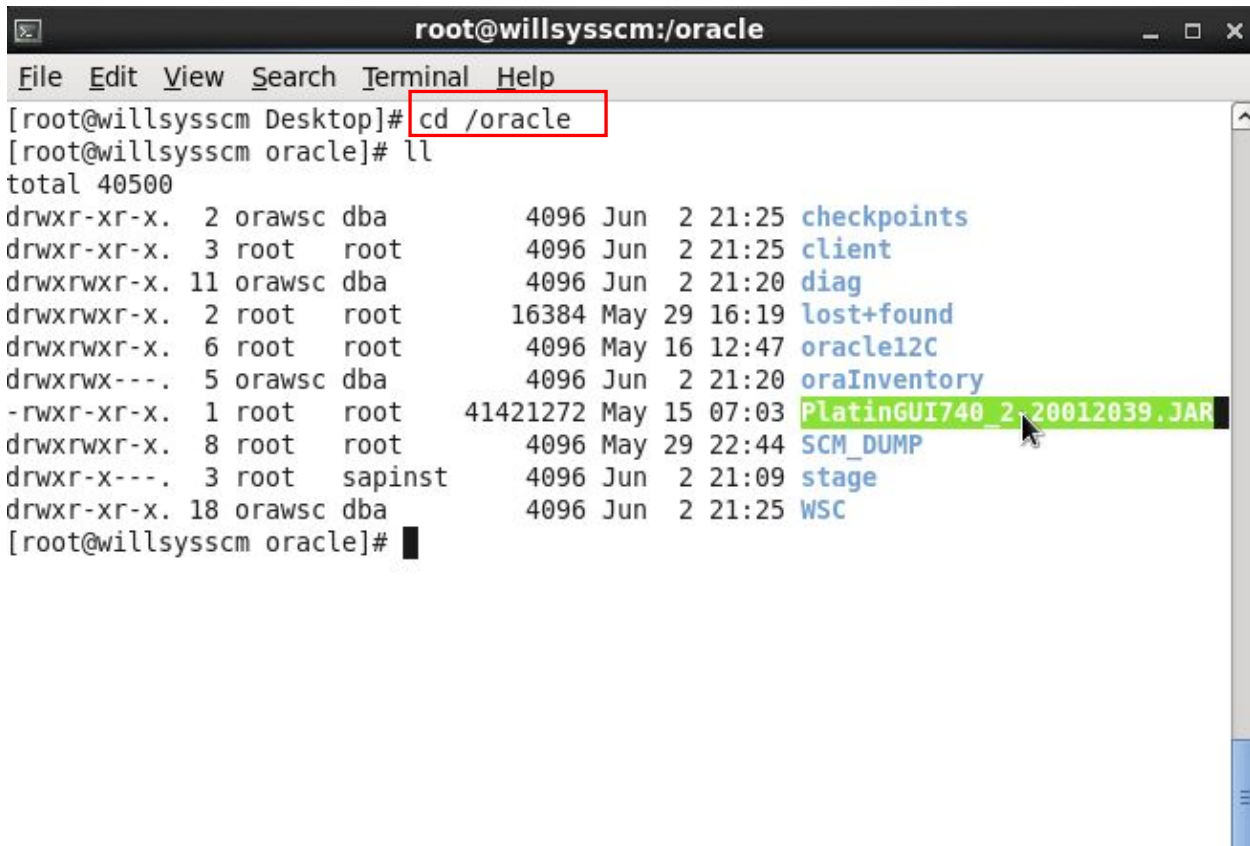






STEP 2: INSTALL SAPGUI740 FOR JAVA

Go to gui software path.

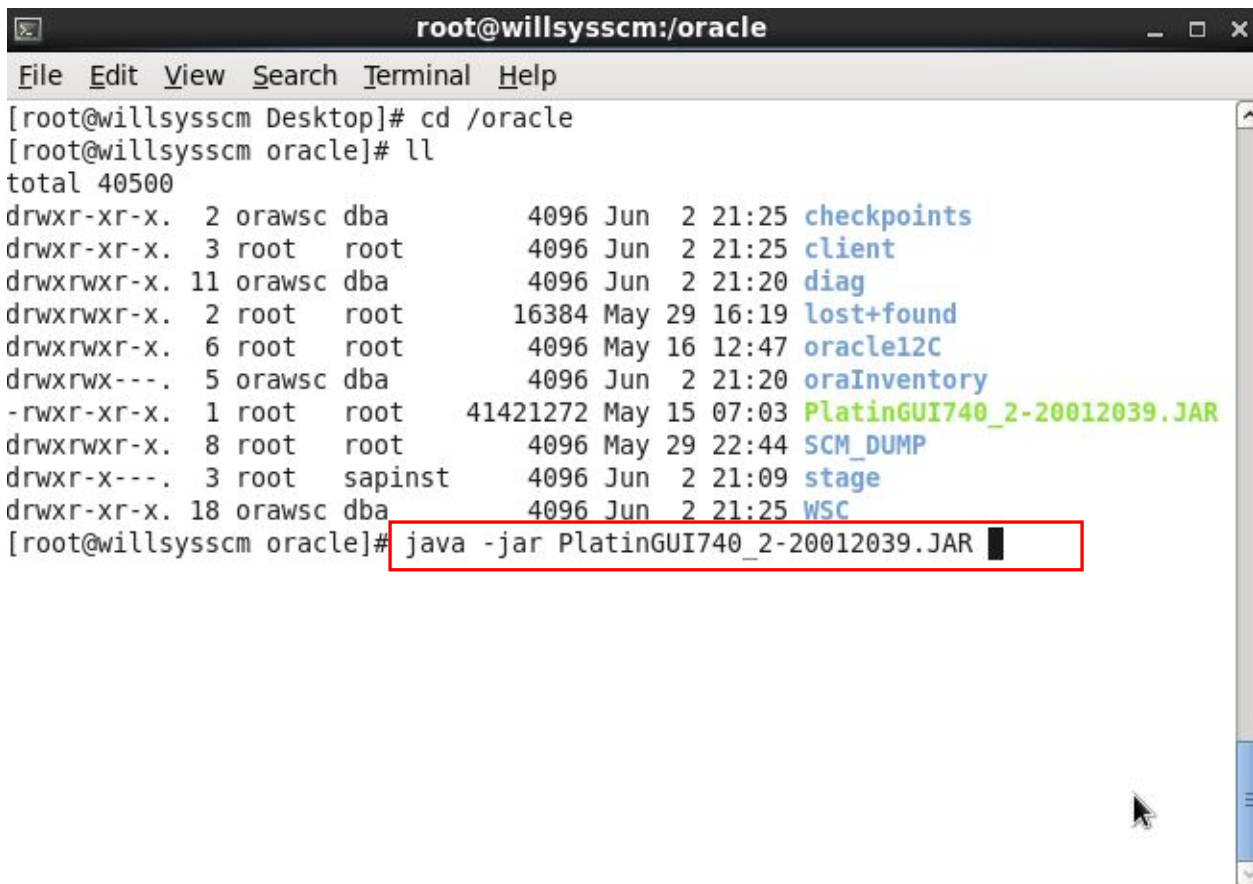


```
root@willssyscm:/oracle
File Edit View Search Terminal Help
[root@willssyscm Desktop]# cd /oracle
[root@willssyscm oracle]# ll
total 40500
drwxr-xr-x. 2 orawsc dba          4096 Jun  2 21:25 checkpoints
drwxr-xr-x. 3 root  root          4096 Jun  2 21:25 client
drwxrwxr-x. 11 orawsc dba         4096 Jun  2 21:20 diag
drwxrwxr-x. 2 root  root        16384 May 29 16:19 lost+found
drwxrwxr-x. 6 root  root          4096 May 16 12:47 oracle12C
drwxrwx---. 5 orawsc dba          4096 Jun  2 21:20 oraInventory
-rwxr-xr-x. 1 root  root    41421272 May 15 07:03 PlatinGUI740_2_20012039.JAR
drwxrwxr-x. 8 root  root          4096 May 29 22:44 SCM_DUMP
drwxr-x---. 3 root  sapinst       4096 Jun  2 21:09 stage
drwxr-xr-x. 18 orawsc dba         4096 Jun  2 21:25 WSC
[root@willssyscm oracle]#
```

STEP 3:

Install Gui by using command

Java -jar PlatinuGUI740Linux_1-20008877.JAR



```
root@willsyscm:/oracle
File Edit View Search Terminal Help
[root@willsyscm Desktop]# cd /oracle
[root@willsyscm oracle]# ll
total 40500
drwxr-xr-x. 2 orawsc dba      4096 Jun  2 21:25 checkpoints
drwxr-xr-x. 3 root  root     4096 Jun  2 21:25 client
drwxrwxr-x. 11 orawsc dba    4096 Jun  2 21:20 diag
drwxrwxr-x. 2 root  root    16384 May 29 16:19 lost+found
drwxrwxr-x. 6 root  root     4096 May 16 12:47 oracle12C
drwxrwx---. 5 orawsc dba     4096 Jun  2 21:20 oraInventory
-rwxr-xr-x. 1 root  root    41421272 May 15 07:03 PlatinGUI740_2-20012039.JAR
drwxrwxr-x. 8 root  root     4096 May 29 22:44 SCM_DUMP
drwxr-x---. 3 root  sapinst 4096 Jun  2 21:09 stage
drwxr-xr-x. 18 orawsc dba    4096 Jun  2 21:25 WSC
[root@willsyscm oracle]# java -jar PlatinGUI740_2-20012039.JAR
```

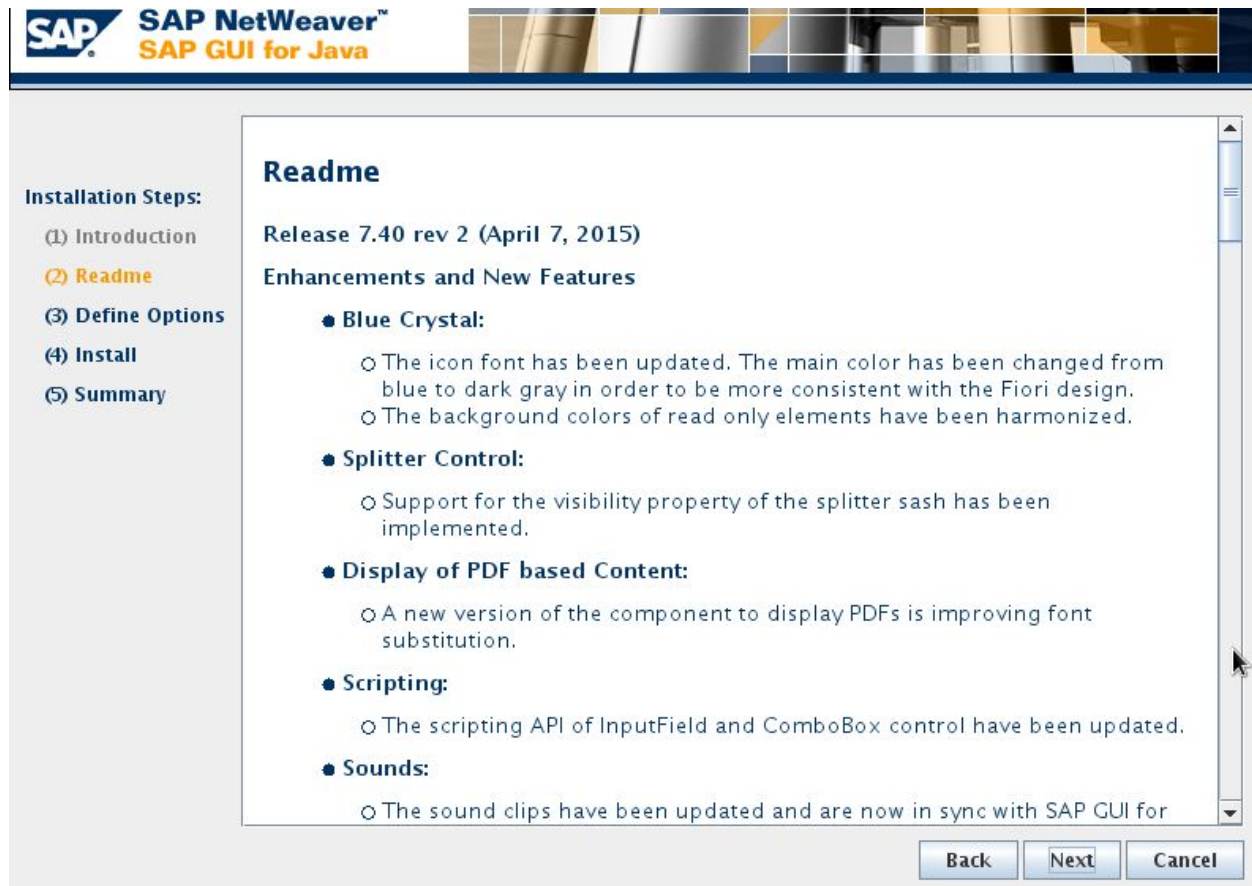

STEP 4:

Click on NEXT



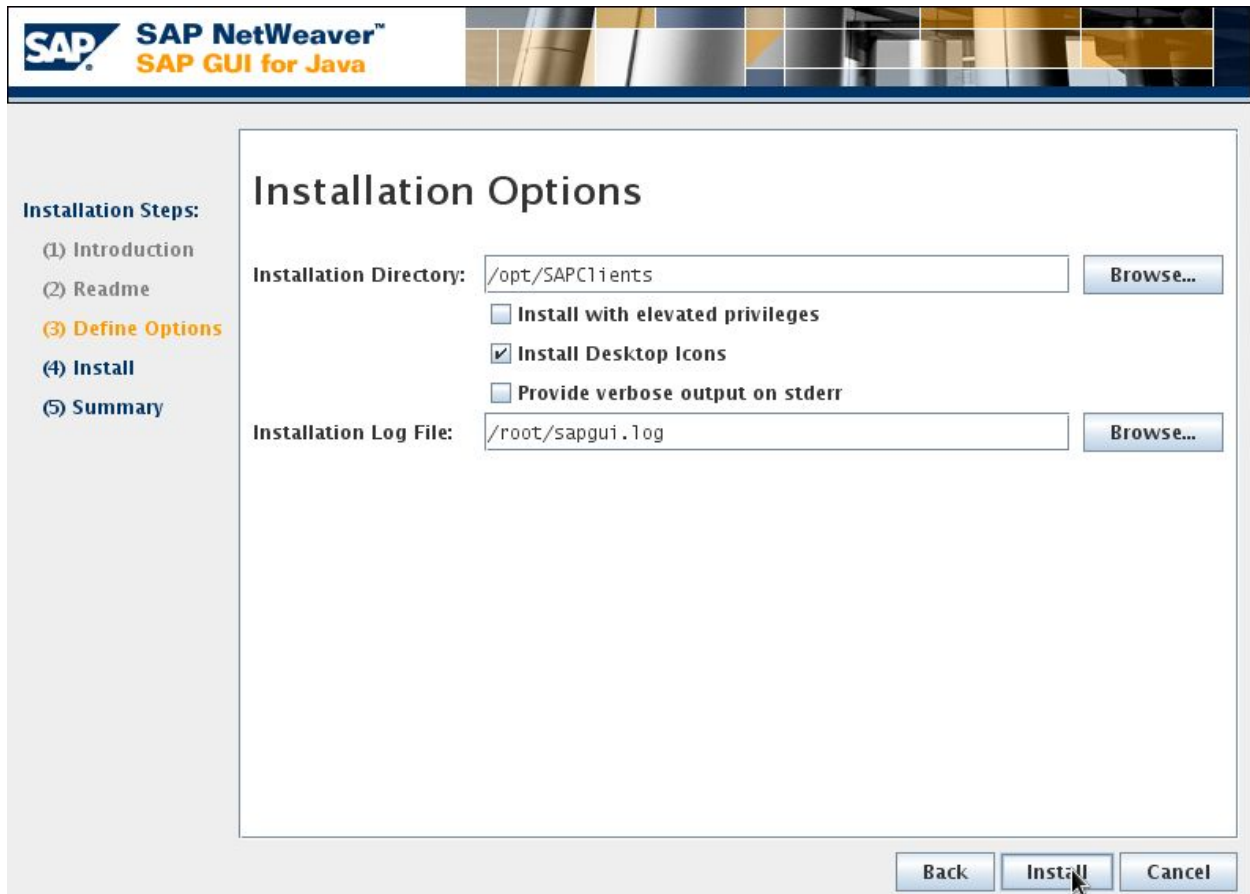
STEP 5:

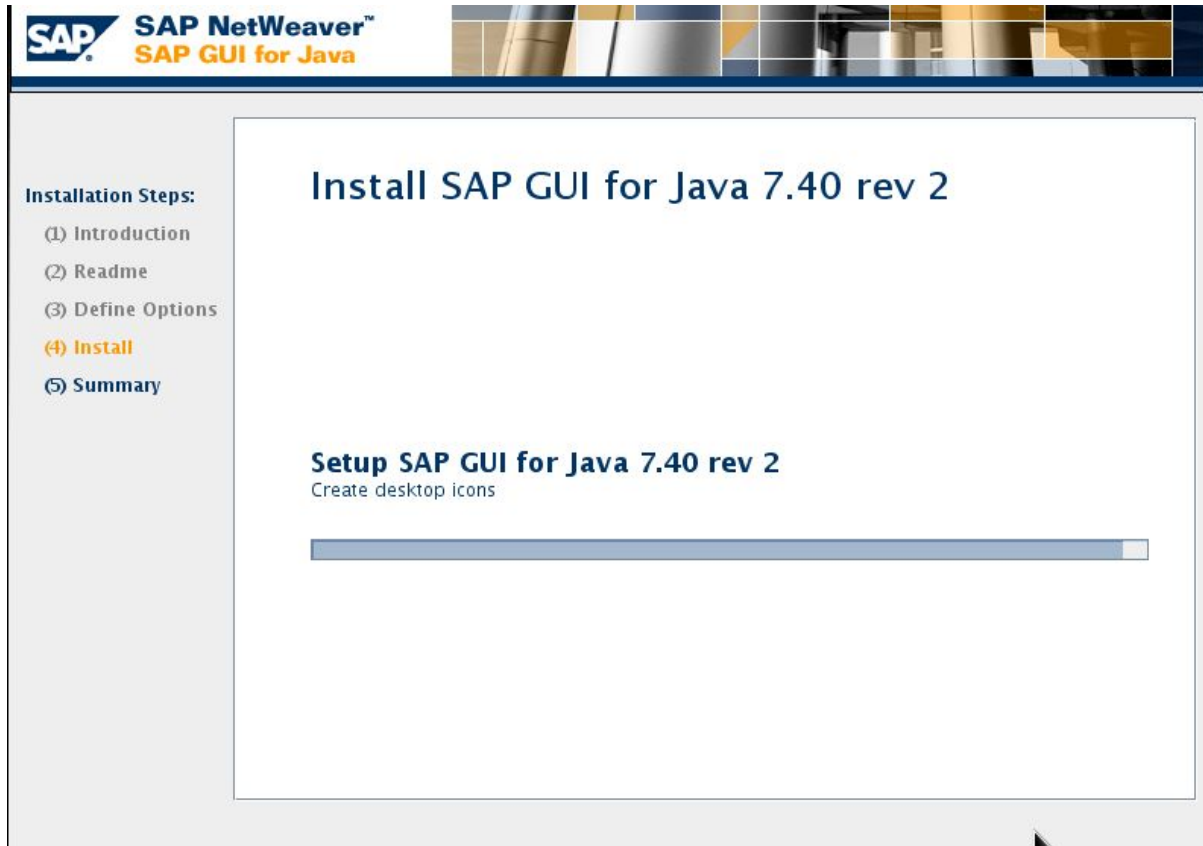
Click on NEXT



STEP 6:

Click on INSTALL





The screenshot shows the SAP NetWeaver™ SAP GUI for Java installation wizard. The title bar reads "SAP NetWeaver™ SAP GUI for Java". The main window title is "Install SAP GUI for Java 7.40 rev 2". On the left, a sidebar lists "Installation Steps": (1) Introduction, (2) Readme, (3) Define Options, (4) Install (highlighted in orange), and (5) Summary. The main content area displays "Setup SAP GUI for Java 7.40 rev 2" with the instruction "Create desktop icons" and a progress bar that is nearly full.

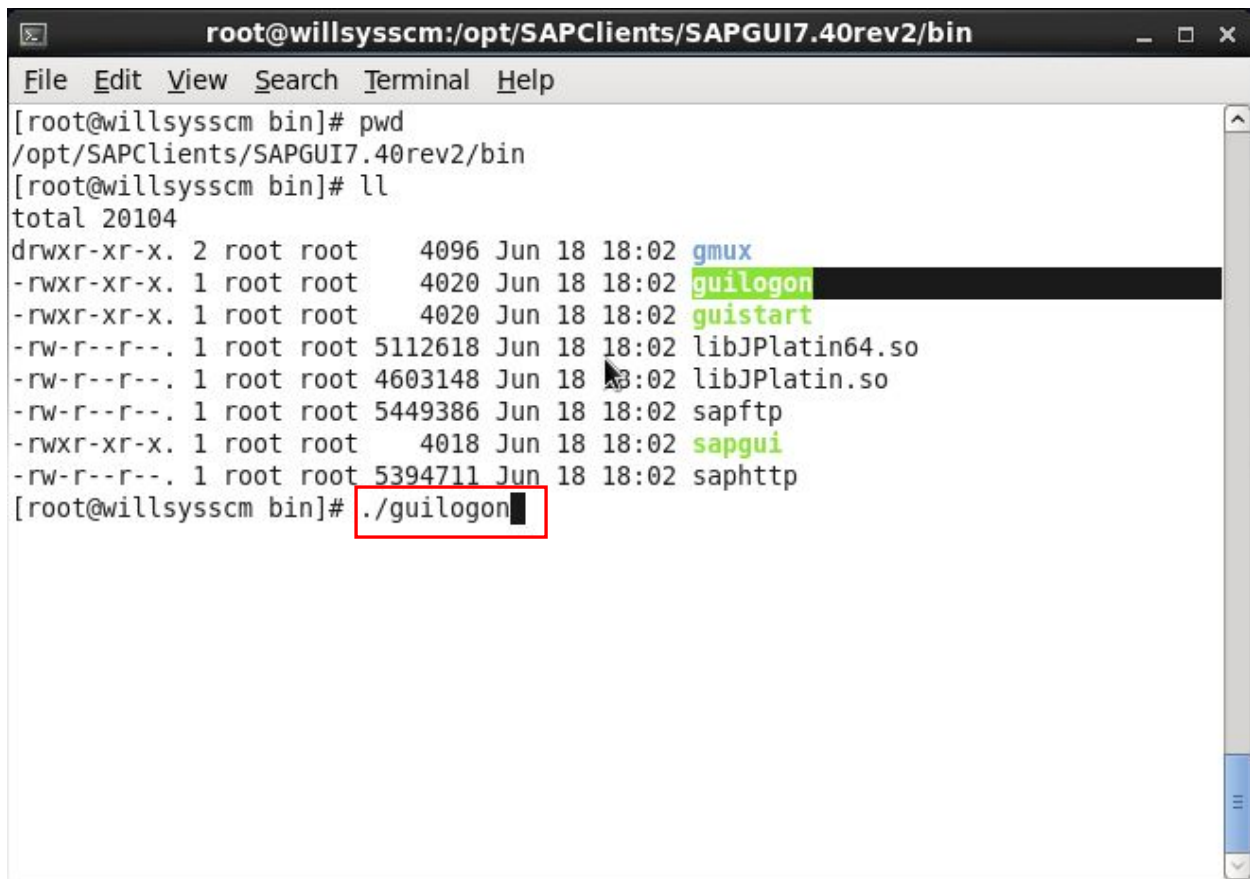
STEP 7:

Click on CLOSE



STEP 8:

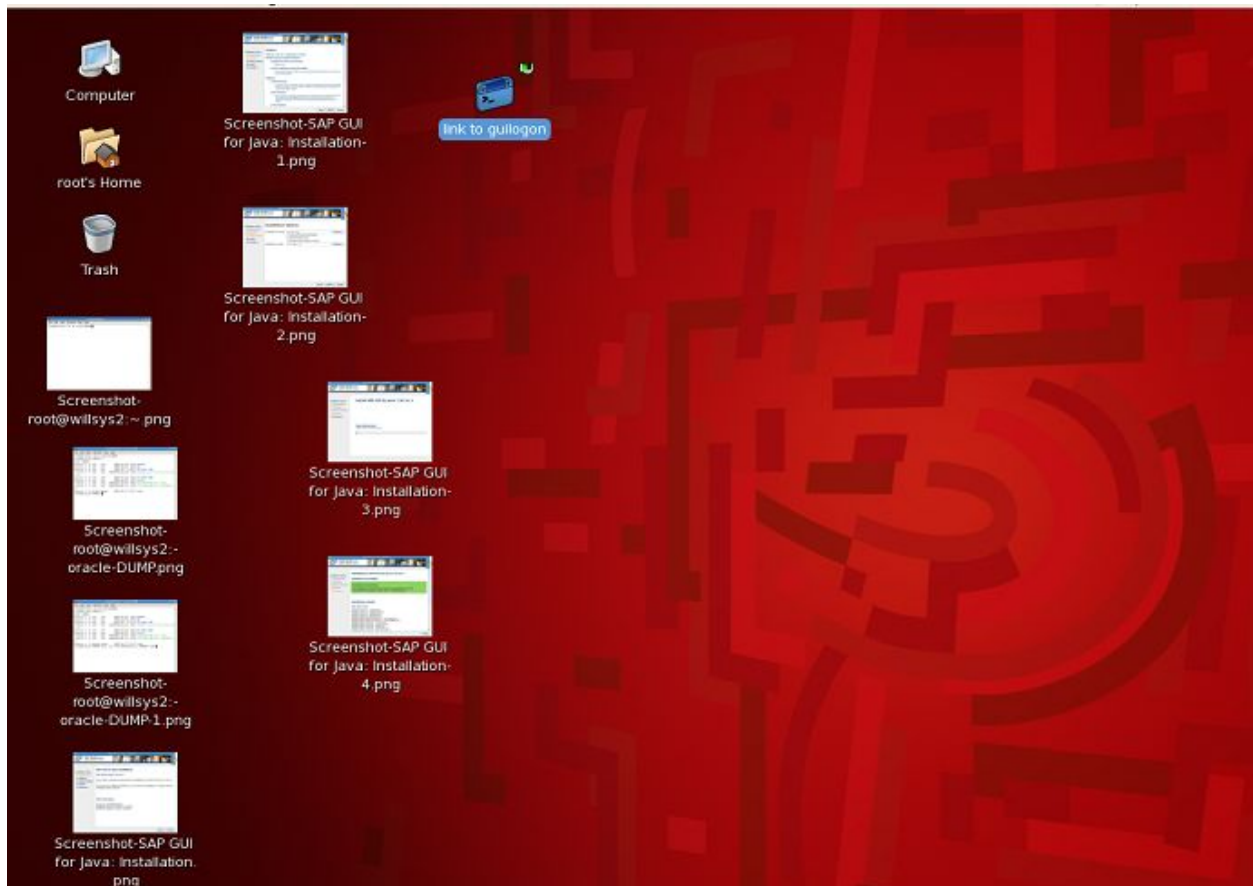
Run guilogon



```
root@willsysbcm:/opt/SAPClients/SAPGUI7.40rev2/bin
File Edit View Search Terminal Help
[root@willsysbcm bin]# pwd
/opt/SAPClients/SAPGUI7.40rev2/bin
[root@willsysbcm bin]# ll
total 20104
drwxr-xr-x. 2 root root 4096 Jun 18 18:02 gmux
-rwxr-xr-x. 1 root root 4020 Jun 18 18:02 guilogon
-rwxr-xr-x. 1 root root 4020 Jun 18 18:02 guistart
-rw-r--r--. 1 root root 5112618 Jun 18 18:02 libJPlatin64.so
-rw-r--r--. 1 root root 4603148 Jun 18 18:02 libJPlatin.so
-rw-r--r--. 1 root root 5449386 Jun 18 18:02 sapftp
-rwxr-xr-x. 1 root root 4018 Jun 18 18:02 sapgui
-rw-r--r--. 1 root root 5394711 Jun 18 18:02 saphttp
[root@willsysbcm bin]# ./guilogon
```

STEP 8:

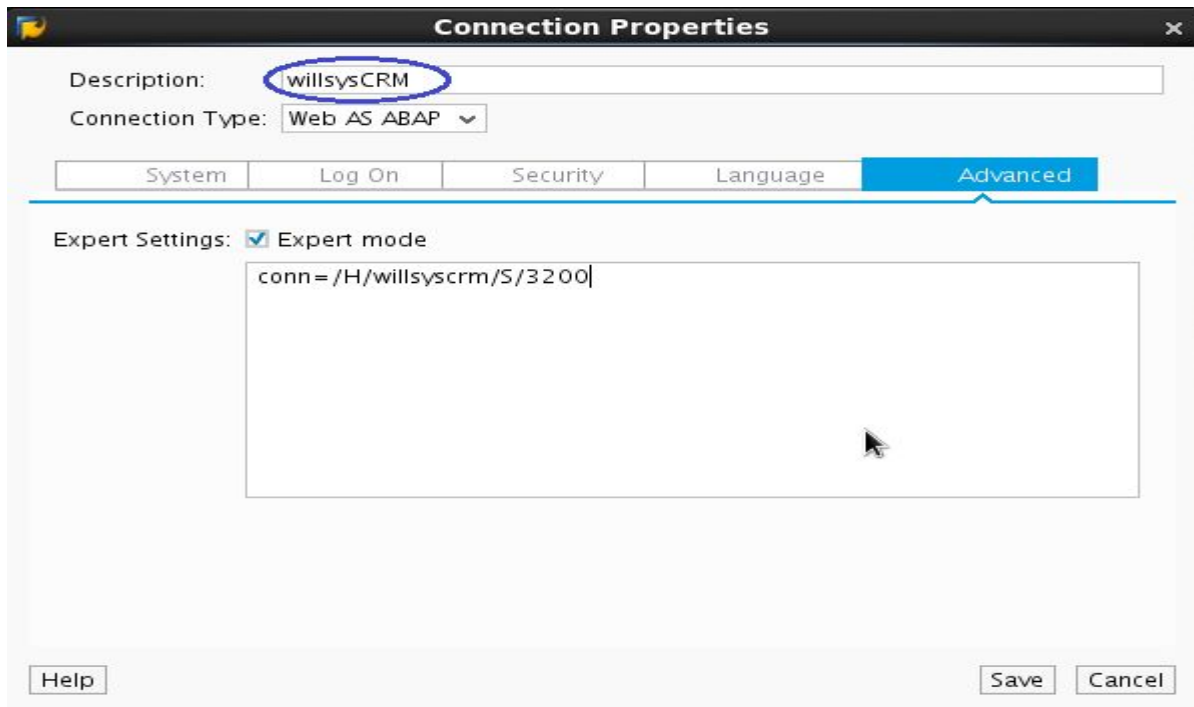
Create New Connection. Double Click on link to guilogon icon





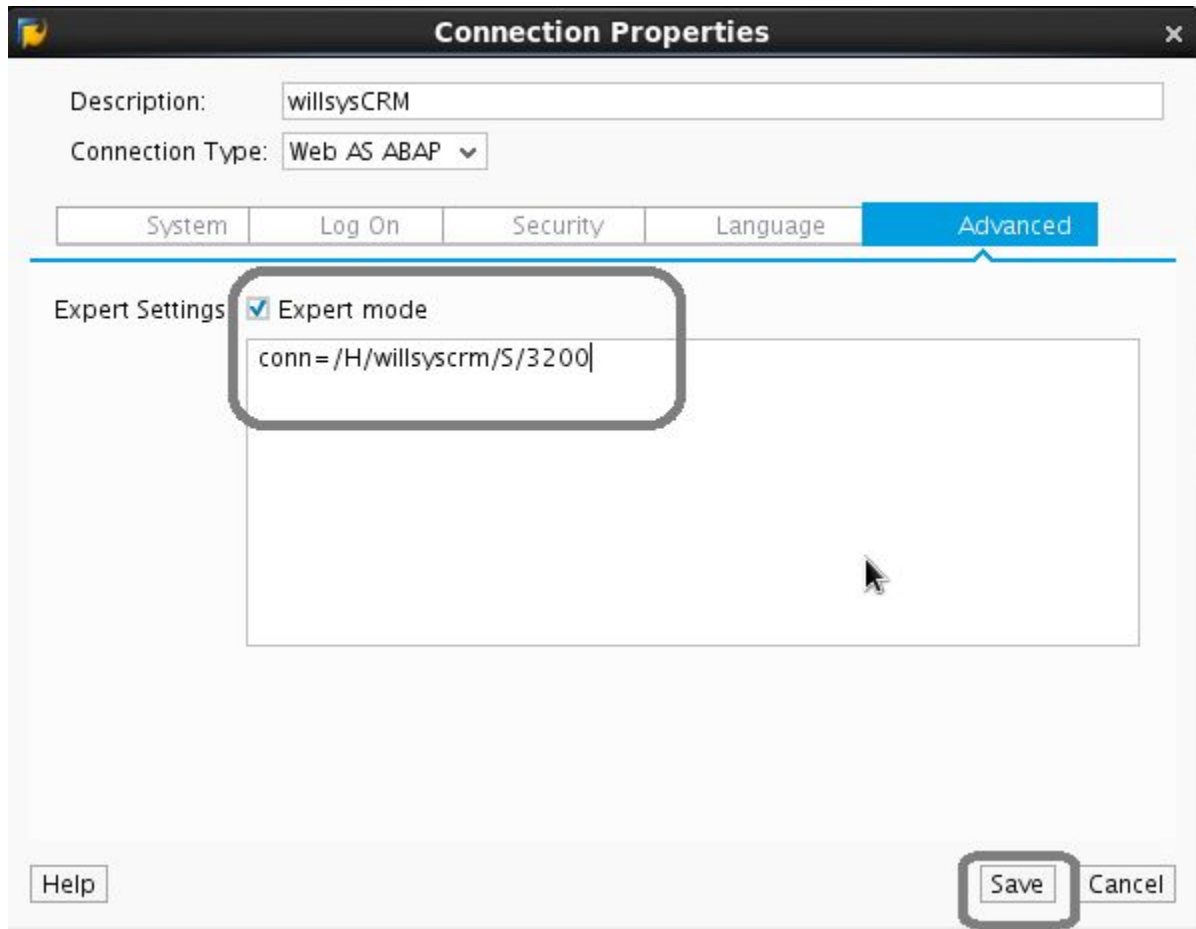
STEP 9:

Specify Description. Then Click Advance Tab



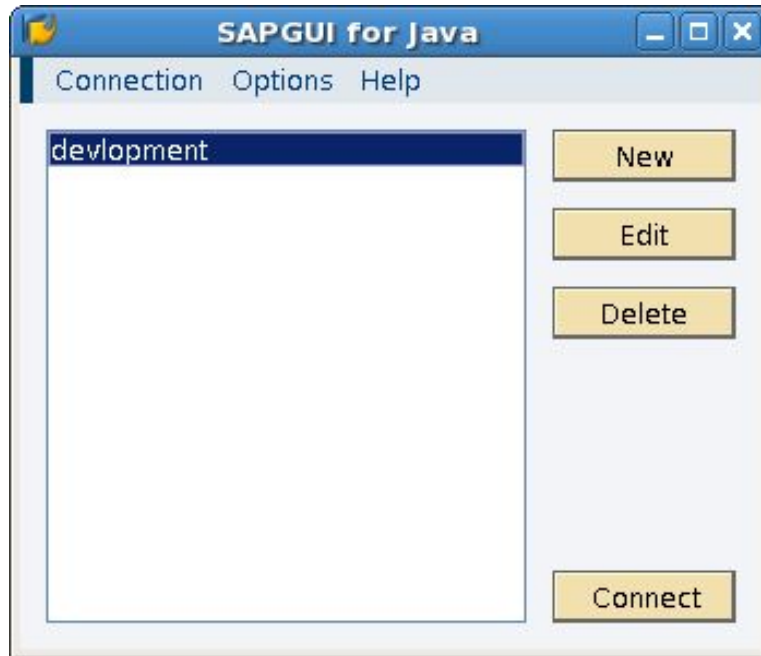
STEP 10:

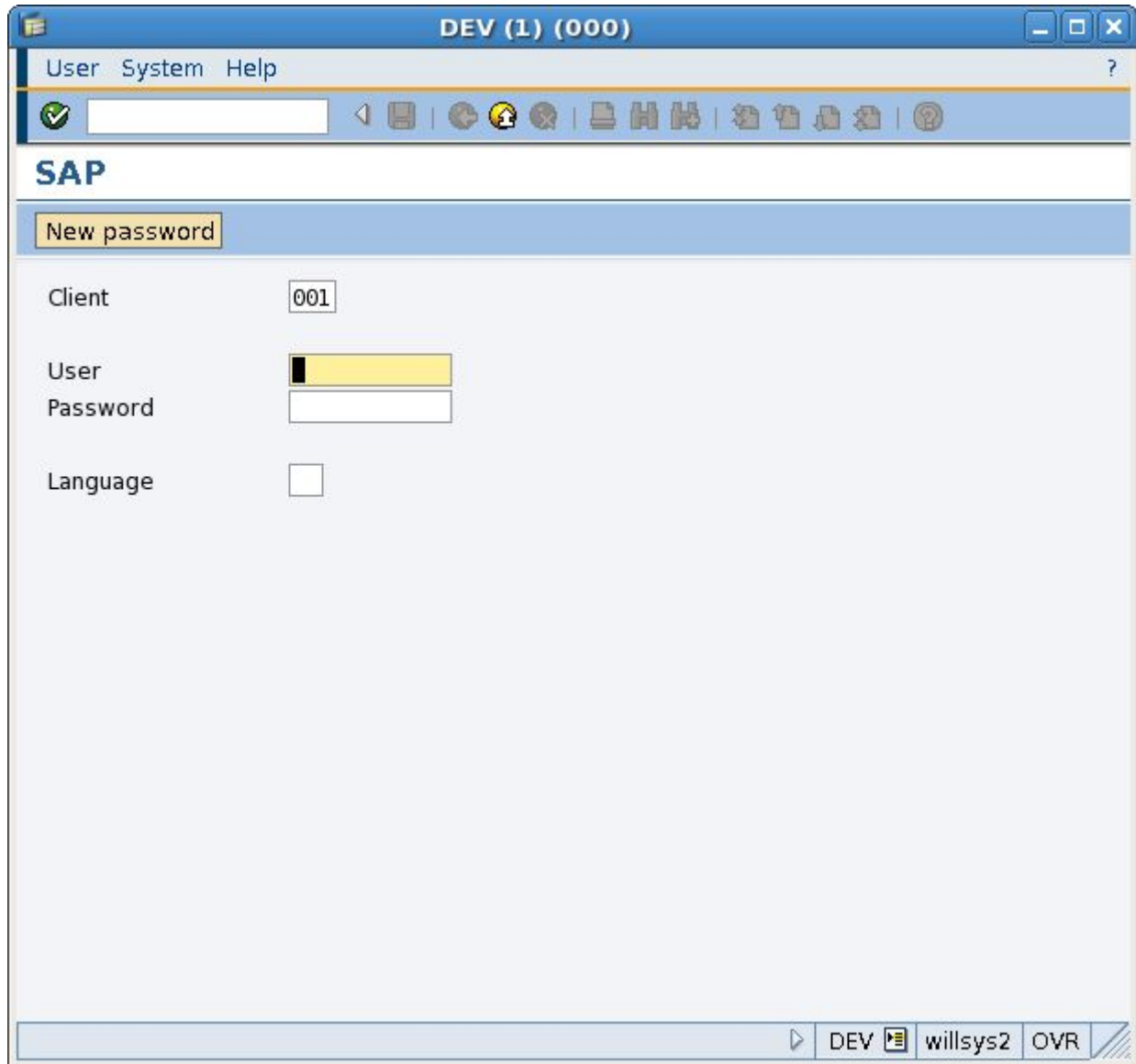
Specify Hostname and Port number. Then Click SAVE



STEP 11:

Click on CONNECT





Related Content:

<http://service.sap.com>

<http://support.sap.com>

www.help.sap.com

www.sdn.sap.com/irj/sdn/index.

Disclaimer and Liability Notice:

WILLSYS will not be held liable for any damages caused by using or misusing the information, code or methods suggested in this document, and anyone using these methods does so at his/her own risk.

WILLSYS offers no guarantees and assumes no responsibility or liability of any type with respect to the content of this technical article or code sample, including any liability resulting from incompatibility between the content within this document and the materials and services offered by WILLSYS. You agree that you will not hold, or seek to hold, WILLSYS responsible or liable with respect to the content of this document.