

**APPLIES TO:**

LOGON GROUP

**SUMMARY**

This article explains how to Perform the LOGON GROUP..

**AUTHOR:**

K.VENKATA RAMU.

**COMPANY:**

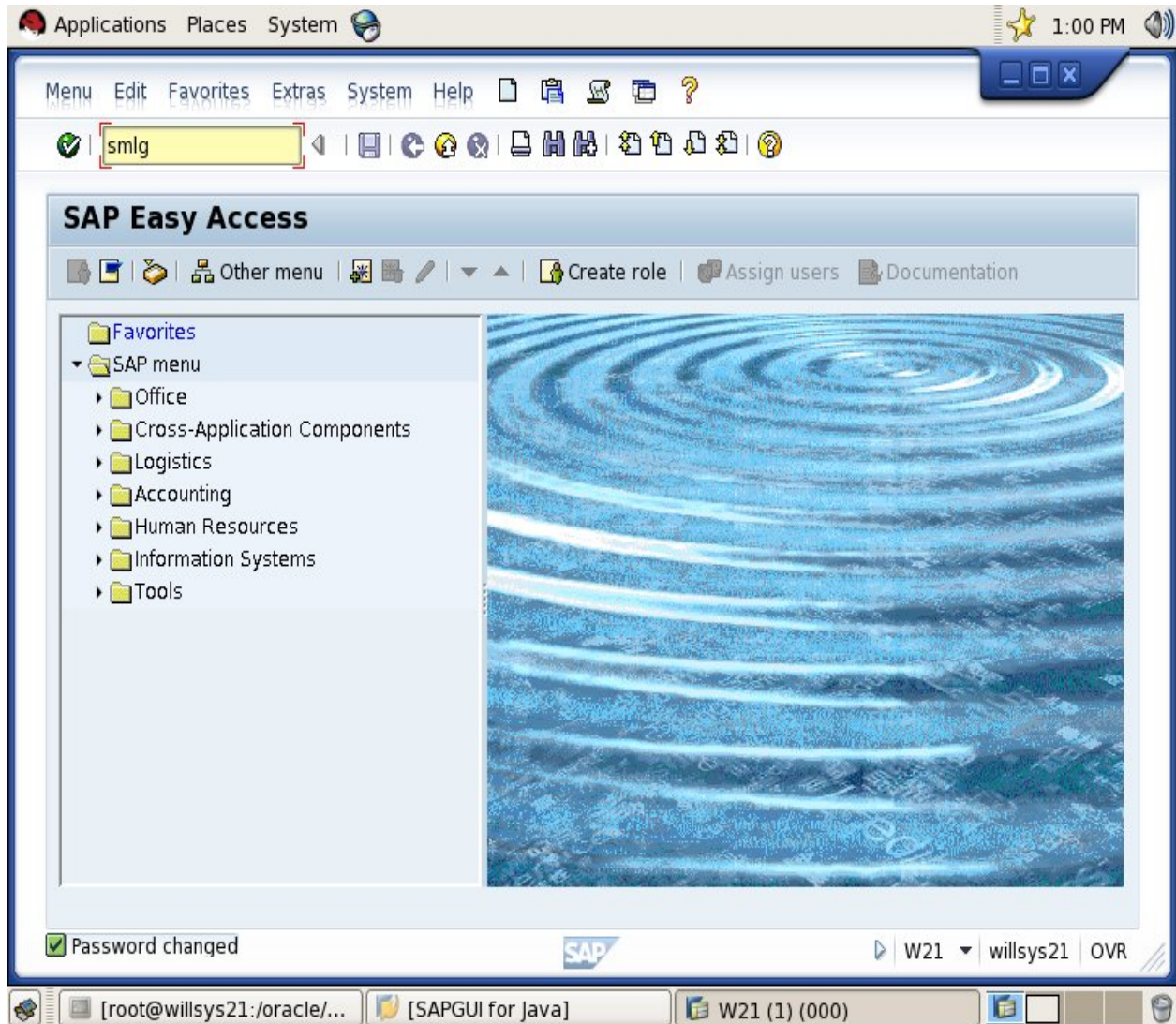
WILLSYS INFOSYSTEMS Pvt. Ltd.,

**CREATED ON:**

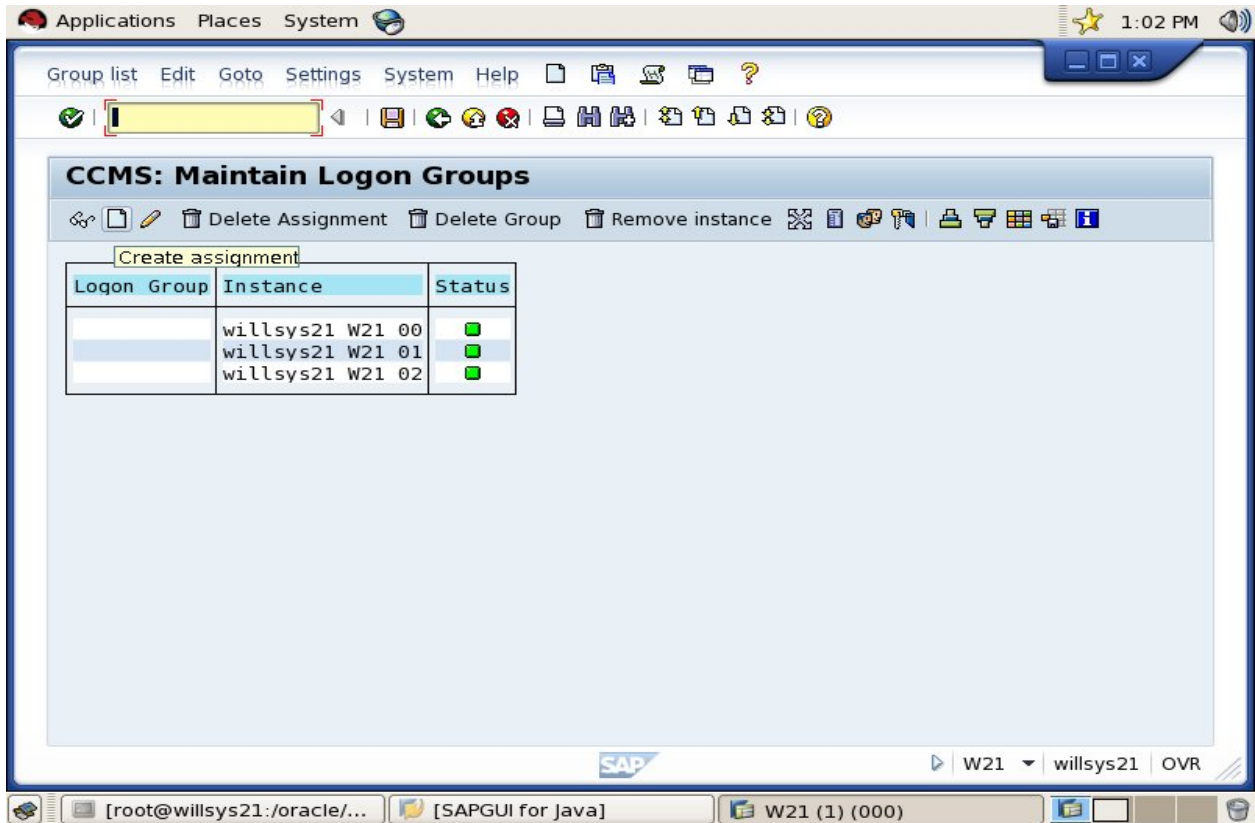
10<sup>th</sup> Feb 2015.



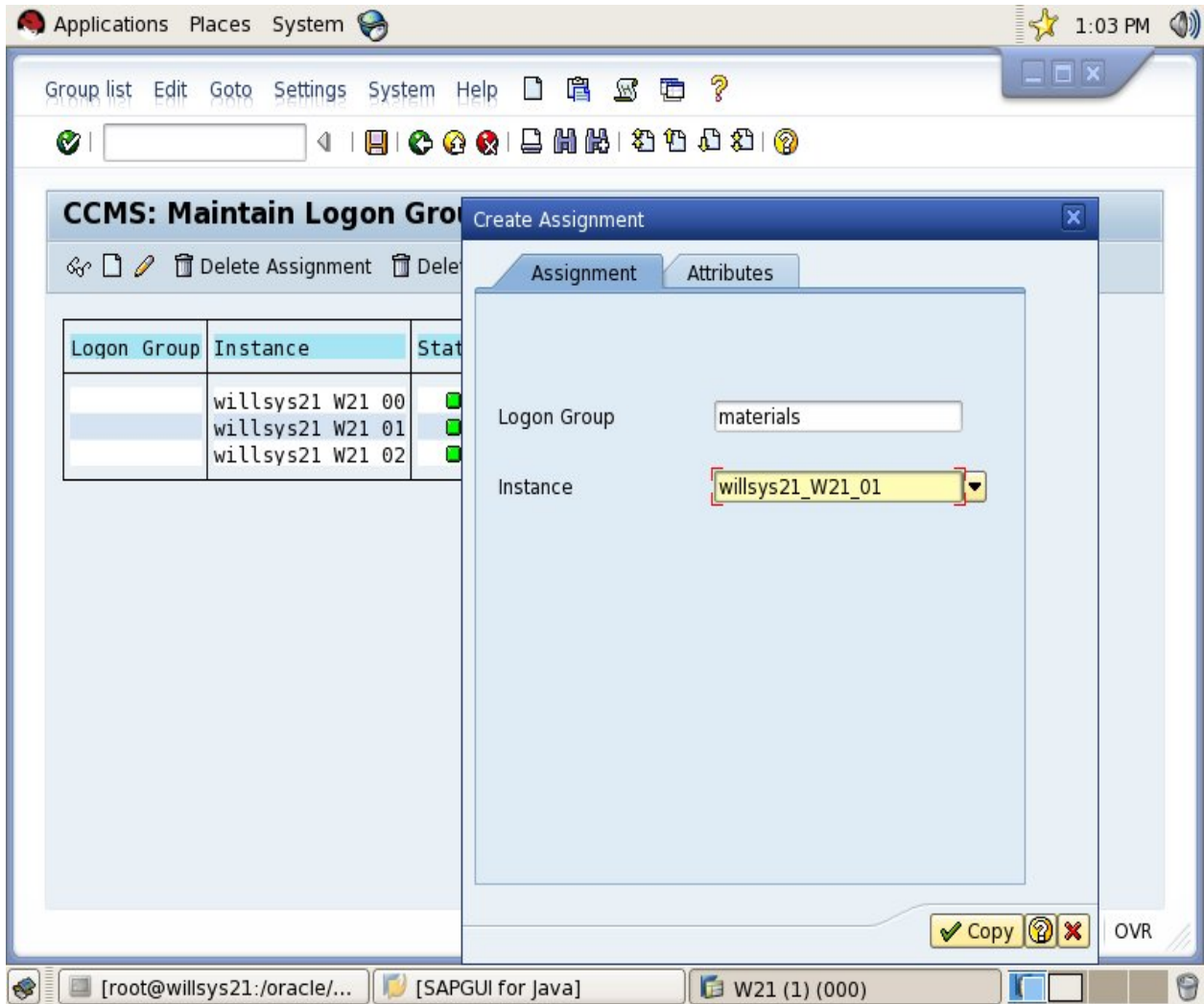
STEP1: Execute tcode SMLG



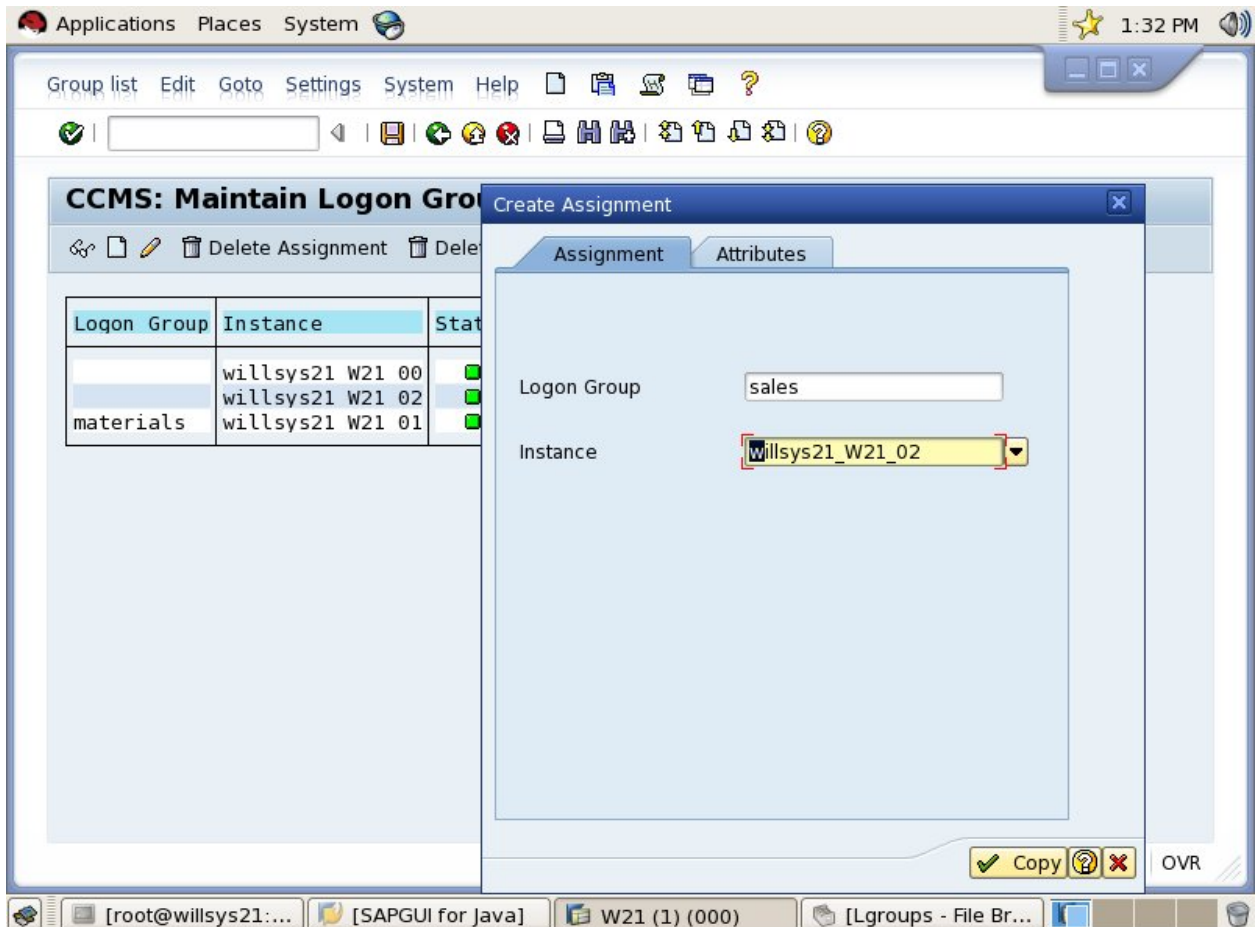
STEP2: click on create assignment



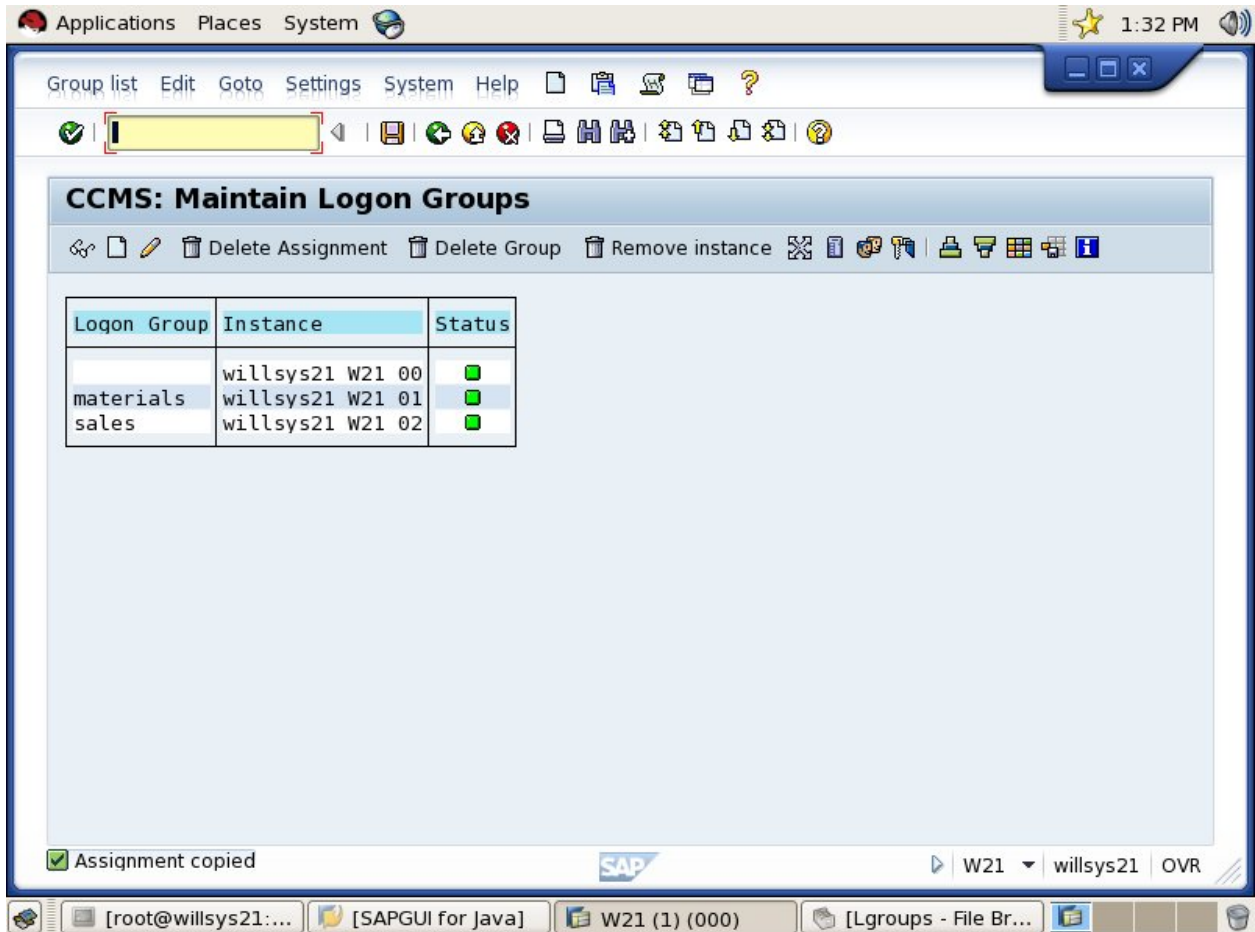
STEP3: specify logon Group (materials) and instance(01) then copy



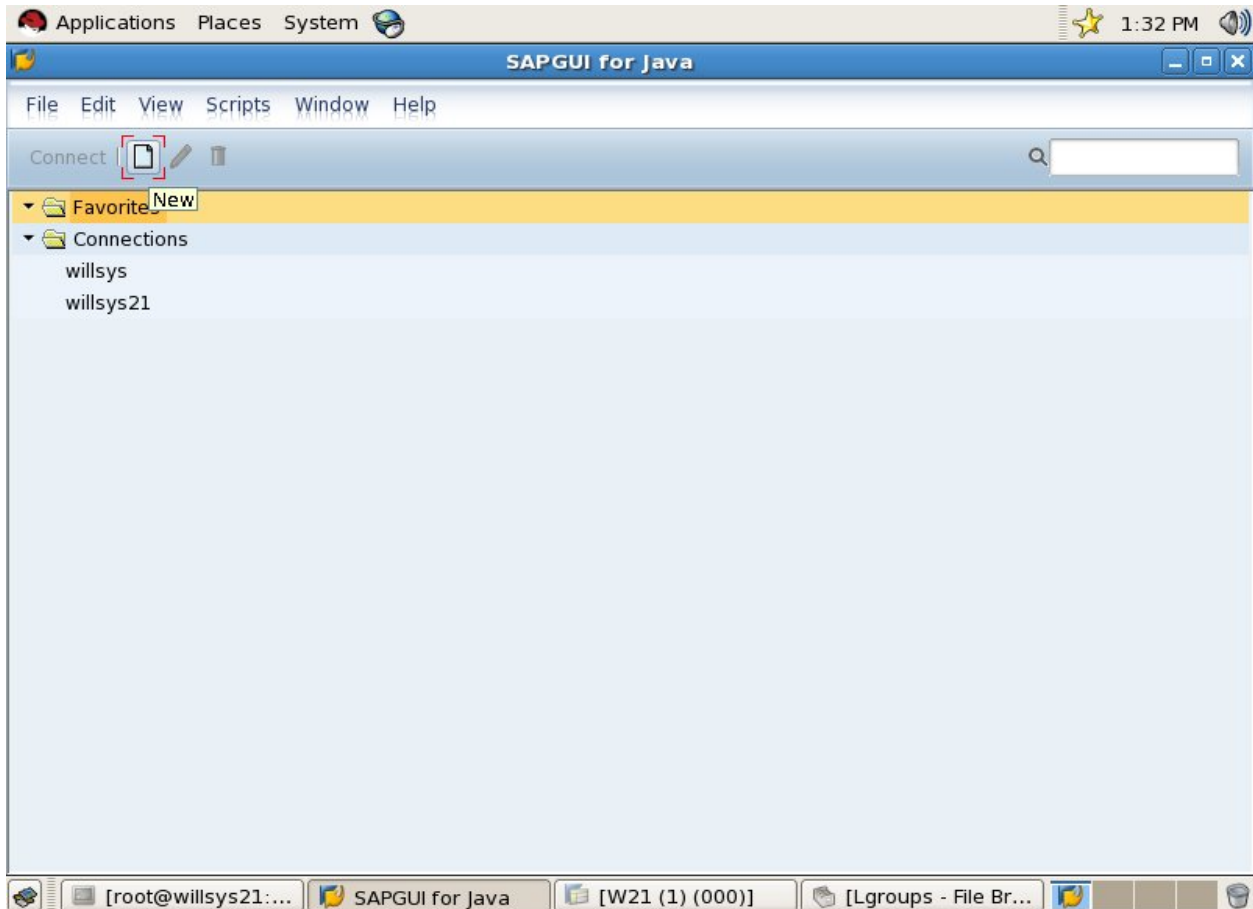
STEP4:specify logon group(sales)and instance(02) then copy



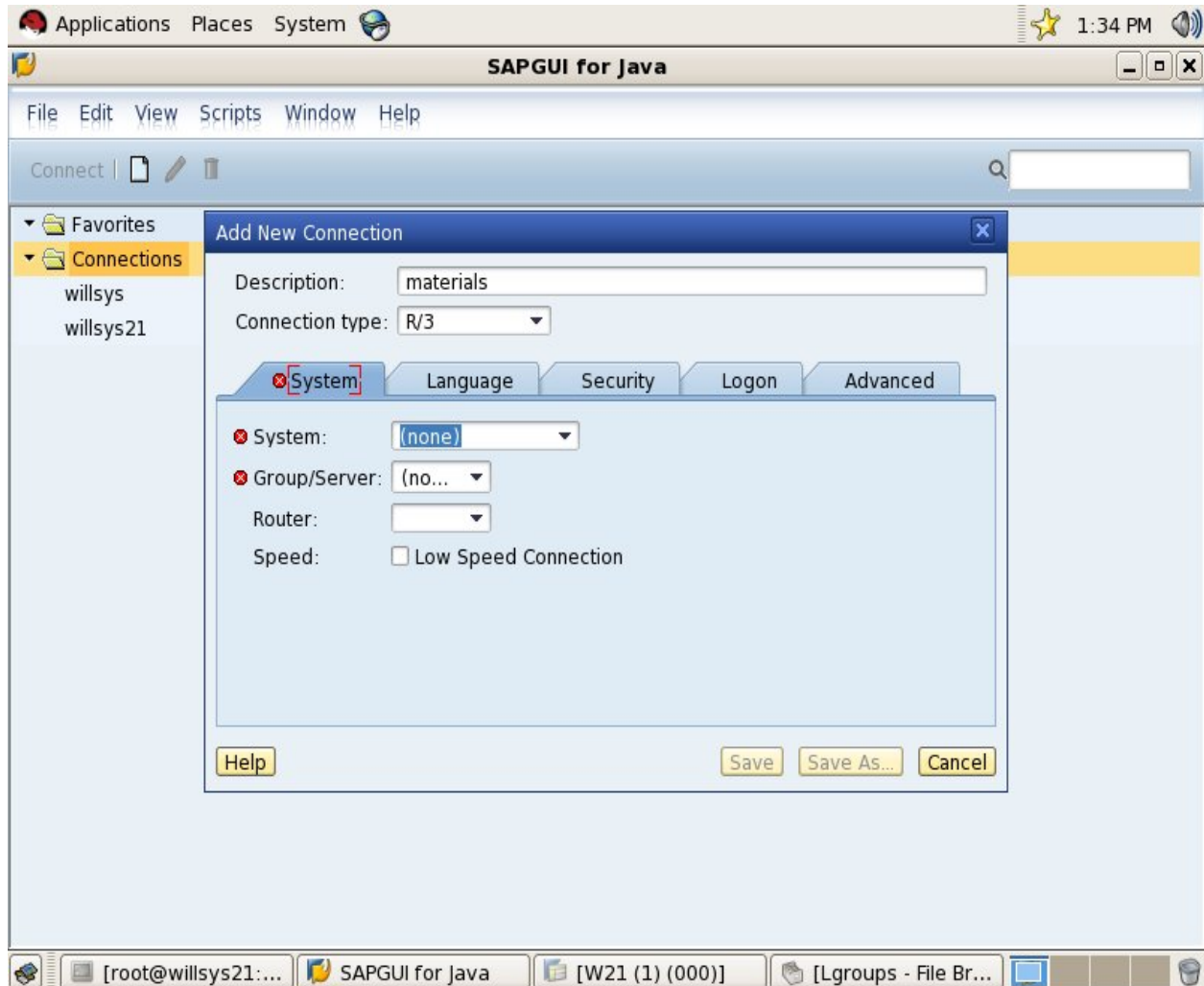
STEP5:click on SAVE



STEP6: open gui and create new connection

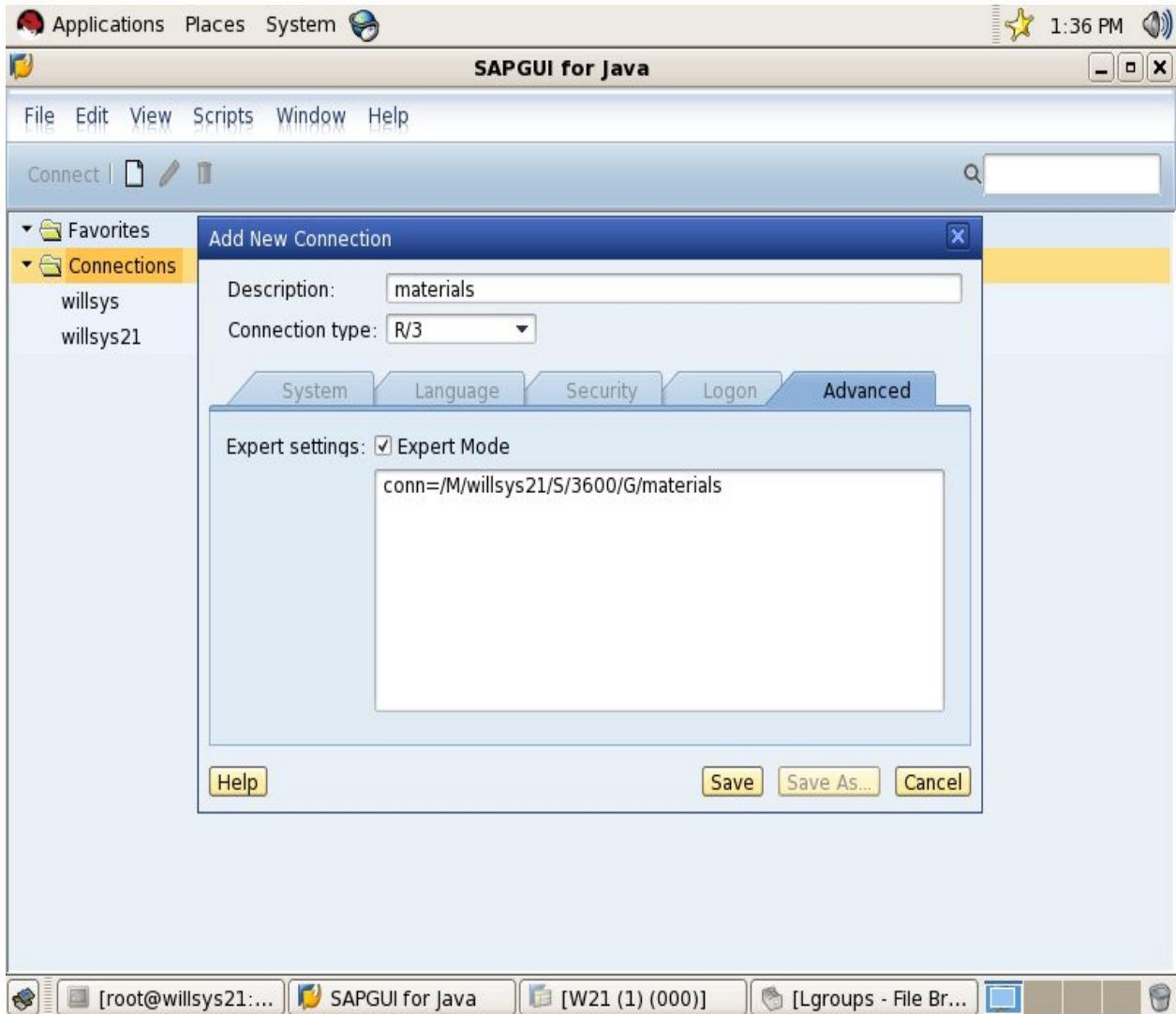


STEP7: specify description(material)

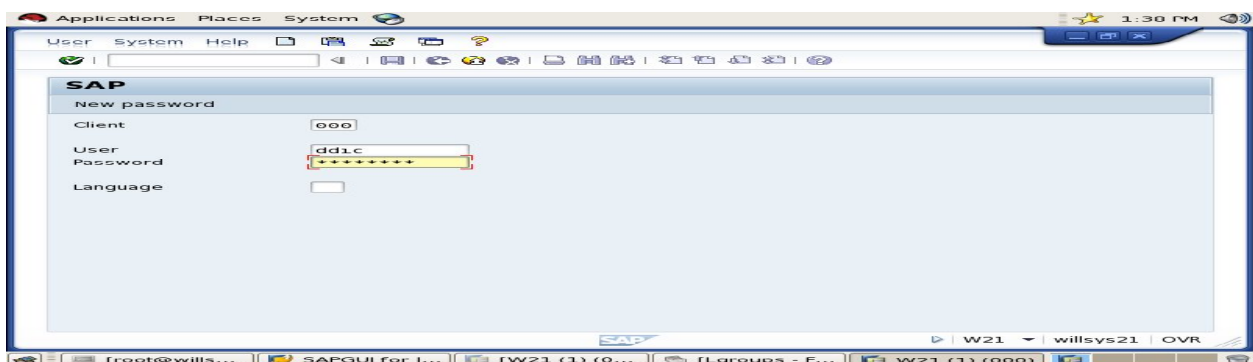
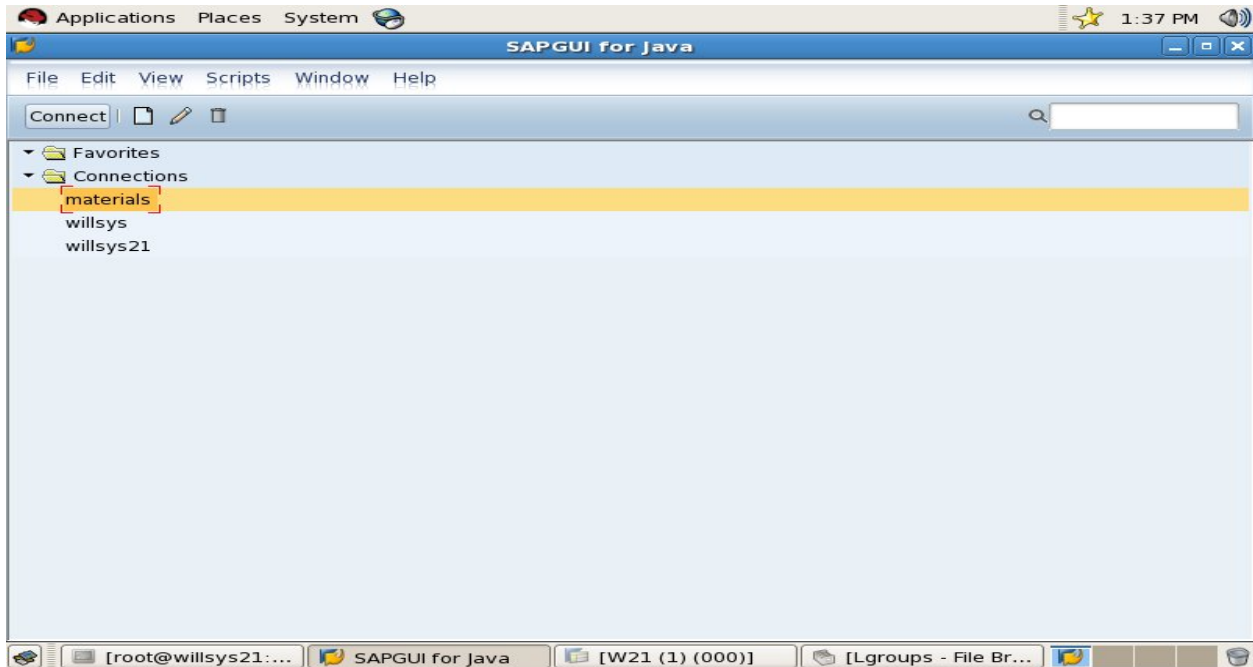




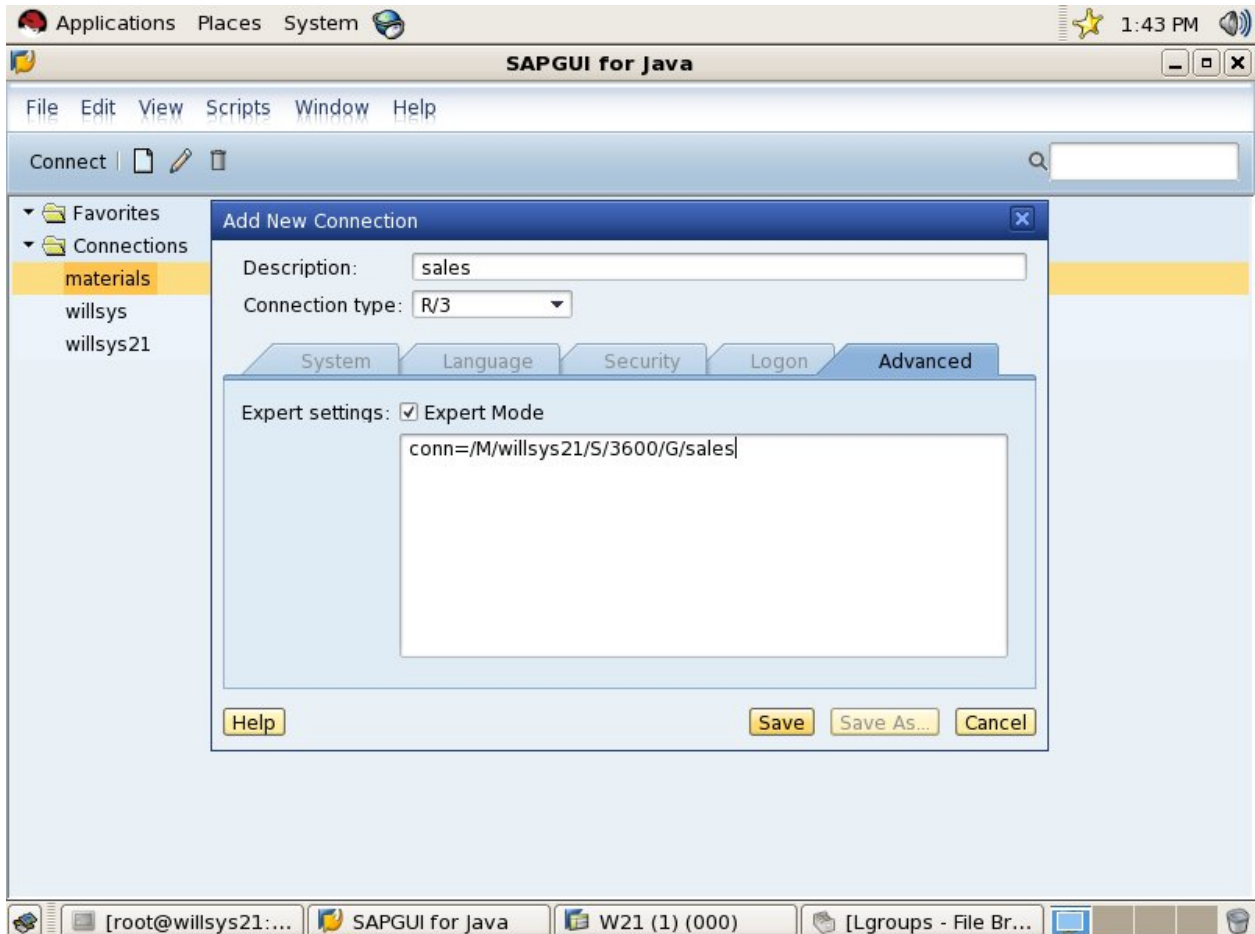
STEP8:click on advance and select expert mode specify connection



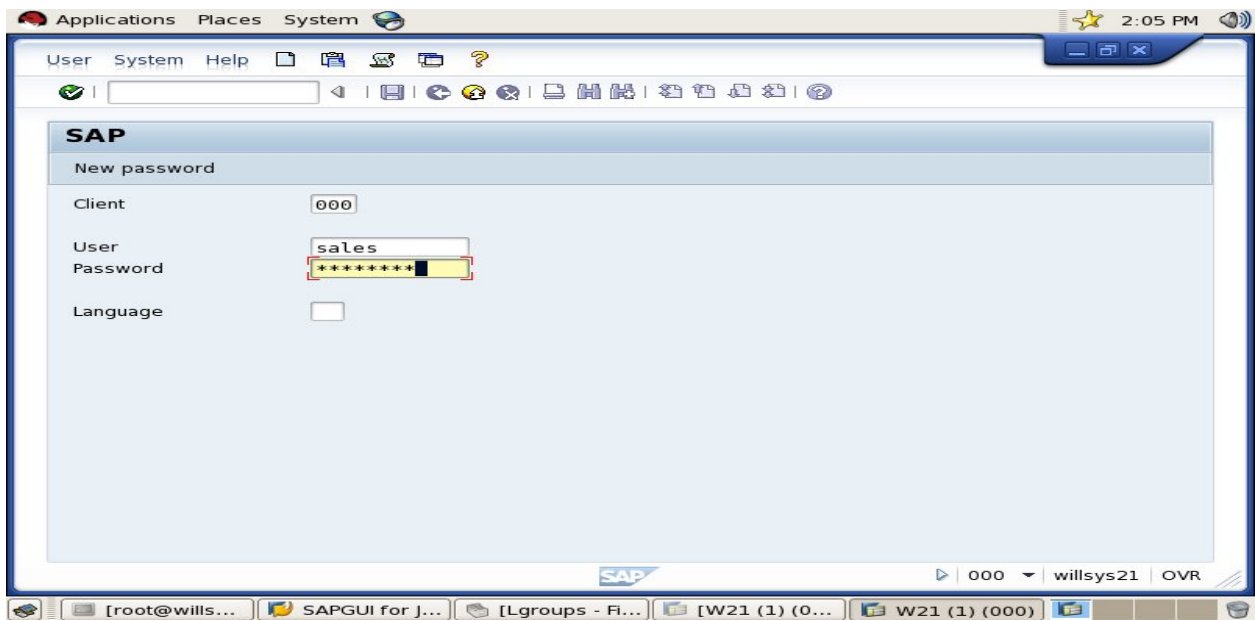
STEP9:login into material group



STEP10: create SALES group same as material group



STEP11: login into sales group



Related Content:

<http://service.sap.com>

<http://support.sap.com>

[www.help.sap.com](http://www.help.sap.com)

[www.sdn.sap.com/irj/sdn/index](http://www.sdn.sap.com/irj/sdn/index).

Disclaimer and Liability Notice:

WILLSYS will not be held liable for any damages caused by using or misusing the information, code or methods suggested in this document, and anyone using these methods does so at his/her own risk.

WILLSYS offers no guarantees and assumes no responsibility or liability of any type with respect to the content of this technical article or code sample, including any liability resulting from incompatibility between the content within this document and the materials and services offered by WILLSYS. You agree that you will not hold, or seek to hold, WILLSYS responsible or liable with respect to the content of this document.